

ADDENDUM

Project: LDS Shoshone HVAC

Project No.: 503900221020101

Addendum No.: 1

Project Address: 505 N Greenwood St., Shoshone, ID 83352

Date: 7/12/2022

Owner: The Church of Jesus Christ of Latter-day Saints, a Utah corporation sole

From (Architect): Engineered Systems Associates

Instructions to Prospective Bidders:

This Addendum forms a part of the Contract Documents and modifies the original Bidding Documents and/or prior Addenda as noted below. All conditions, requirements, materials and workmanship are to be as described in the Contract Documents unless specifically stated otherwise. This Addendum consists of 1 page(s) and the attached drawing(s), Sheet(s) ME-2, ME-3, dated 7/11/2022

1. Changes to prior Addenda:

- a. None
- b.

2. Changes to Bidding Requirements:

- a. None
- b.

3. Changes to Conditions of the Contract:

- a. None
- b.

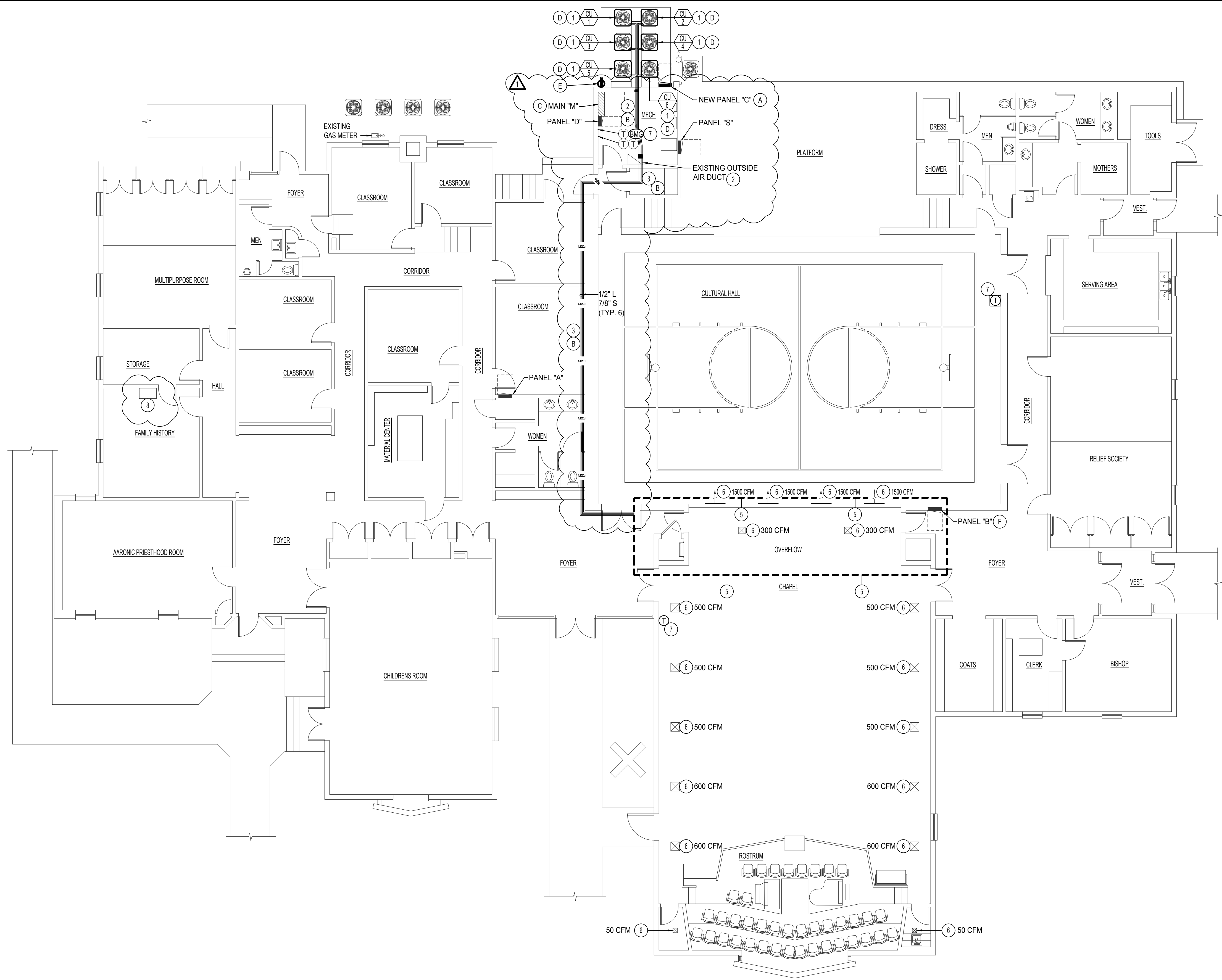
4. Changes to Specifications:

- a. None
- b.

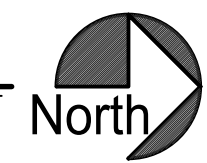
5. Changes to Drawings:

- a. ME-2 & ME-3 - To minimize the overall impact within the building, route the new refrigeration line set on the flat roof of the building. The drawings have been clouded and dated as "Addendum #1"
- b. ESA has coordinated with a structural engineer that roof mounting new condensing units on top of the flat portion of the roof would require a structural upgrade. This would undo any potential costs savings, thus this option will not be explored for this bid.

End of Addendum



MECHANICAL FLOOR PLAN
SCALE: 1/8" = 1'-0"



PLAN NOTES:

- 1 INSTALL NEW CONDENSING UNIT ON 1" VIBRATION ISOLATION PADS.
- 2 RE-USE EXISTING REFRIGERANT PENETRATION IF POSSIBLE. DEMO MECHANICAL WALL AS REQUIRED FOR NEW ROUTE. SEAL WEATHER TIGHT AFTER WORK IS COMPLETE. ROUTE REFRIGERATION LINE EXPOSED IN MECHANICAL ROOM TO EXISTING COMBUSTION AIR DUCTWORK THROUGH ROOF. COVER ALL PIPING WITH REFRIGERANT COVERS. COLOR TO MATCH EXISTING CONDITIONS. COORDINATE WITH CONTROL SUBCONTRACTORS TO ROUTE CONDUIT WITH NEW LINE SETS. SEE DETAIL E & F ON SHEET ME-4.
- 3 ROUTE REFRIGERATION LINES ON ROOF SPACE. SEE DETAIL G ON SHEET ME-3. REFRIGERATION LINES TO MOUNT ON SUPPORTS EVERY 10'. SEE SPECIFICATIONS.
- 4 RAISE REFRIGERANT LINES THROUGH EXISTING COMBUSTION AIR DUCTWORK TO ROOF. VERIFY EXISTING CONDITIONS DURING PRE-BID.
- 5 SEE ENLARGED SCALE MECHANICAL MEZZANINE PLAN ON SHEET ME-3.
- 6 BALANCE TO CFM AS INDICATED ON PLANS.
- 7 INSTALL NEW CONTROLS AS PER DETAILS B & C ON SHEET ME-4. SEE SHEETS ME-5 AND ME-6 FOR WIRING DIAGRAM.
- 8 EXISTING INTERNET ACCESS LOCATION.

ELEC. PLAN NOTES:

- A NEW PANEL "C": RUN CONDUIT AND WIRE TO EXISTING PANEL "M". PROVIDE AND INSTALL NEW BREAKER IN PANEL "M". SEE PANEL SCHEDULE ON SHEET ME-4 FOR WIRE, CONDUIT AND BREAKER SIZE. LABEL BREAKERS.
- B PROVIDE AND INSTALL THERMOSTAT CABLE BETWEEN INDOOR FURNACES AND OUTDOOR UNIT AS PER MANUFACTURER DIRECTIONS. COORDINATE WITH MECHANICAL TO ROUTE WITH REFRIGERATION LINES.
- C SEE PANEL SCHEDULE C ME-4 FOR NEW BREAKER TO BE INSTALLED IN PANEL "M".
- D RUN 3#8, 1#10 GROUND, 3/4" CONDUIT TO NEW PANEL "C".
- E NEW WALL RECEPTACLE, G.F.C.I. 20 AMP RECEPTACLE WITH "IN-USE" W.P. COVER. 2#12, 1#12 GROUND, 1/2" CONDUIT TO NEW PANEL "C".
- F PROVIDE & INSTALL NEW BREAKERS IN EXISTING PANEL "B". SEE PANEL SCHEDULES "F1" AND "F2" ON SHEET ME-4 FOR WIRE SIZE.

MECHANICAL LEGEND

SYMBOL	DESCRIPTION
(T)	ELECTRONIC THERMOSTAT
(EC 1)	EQUIPMENT SYMBOL
HD	HAND DAMPER
(RBD)	ROUND BRANCH DUCT WITH HAND DAMPER
(IFD)	INSULATED FLEXIBLE DUCT
(RAG)	RETURN AIR OR EXHAUST GRILLE
(CD)	CEILING DIFFUSER
(RMUF)	ROOF MOUNTED UPBLAST EXHAUST FAN

FIRE NOTES:

- A THE CONTRACTOR SHALL FIRE CAULK ALL DUCT OR PIPE PENETRATIONS THRU FIRE RATED WALLS, FLOORS, OR CEILINGS.
- B THE CONTRACTOR SHALL INSTALL INTUMESCENT FIRE BLOCKS ON PLASTIC PENETRATIONS THRU FIRE RATED WALLS, FLOORS, OR CEILINGS.

REVISIONS:

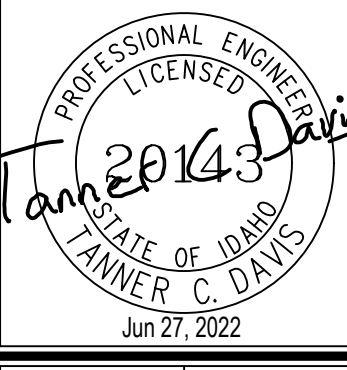
- 1 ADDENDUM #1 - 07/11/22



**Engineered Systems Associates
Mechanical Engineers**
Dwayne Sudweeks P.E., Dave Hansen P.E., Tanner Davis P.E.
1355 East Center - Pocatello, Idaho 83201
Phone: (208) 233-0501 email: esa@engsystems.com

PROPERTY # 503-9002
HVAC REPLACEMENT FOR:
LDS SHOSHONE 1st WARD
SHOSHONE, IDAHO
MECHANICAL FLOOR PLAN

PROJECT:
SHEET TITLE:



DRWN. BY:	CKD. BY:
TCD	DCS
JOB NO.:	DATE:
22096	06/27/22

SHEET:
ME-2
OF: 6

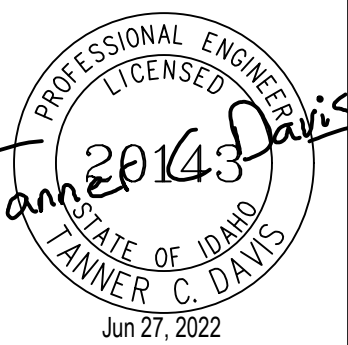


Engineered Systems Associates
Mechanical Engineers
 Dwayne Sudweeks P.E., Dave Hansen P.E., Tanner Davis P.E.
 1355 East Center - Pocatello, Idaho 83201
 Phone: (208) 233-0501 email: esa@engsystems.com

PROPERTY # 503-9002
 HVAC REPLACEMENT FOR:
LDS SHOSHONE 1st WARD
 SHOSHONE, IDAHO

MEZZANINE MECHANICAL PLAN

SHEET TITLE:



DRWN. BY:	CKD. BY:
TCD	DCS
JOB NO.	DATE:
22096	06/27/22

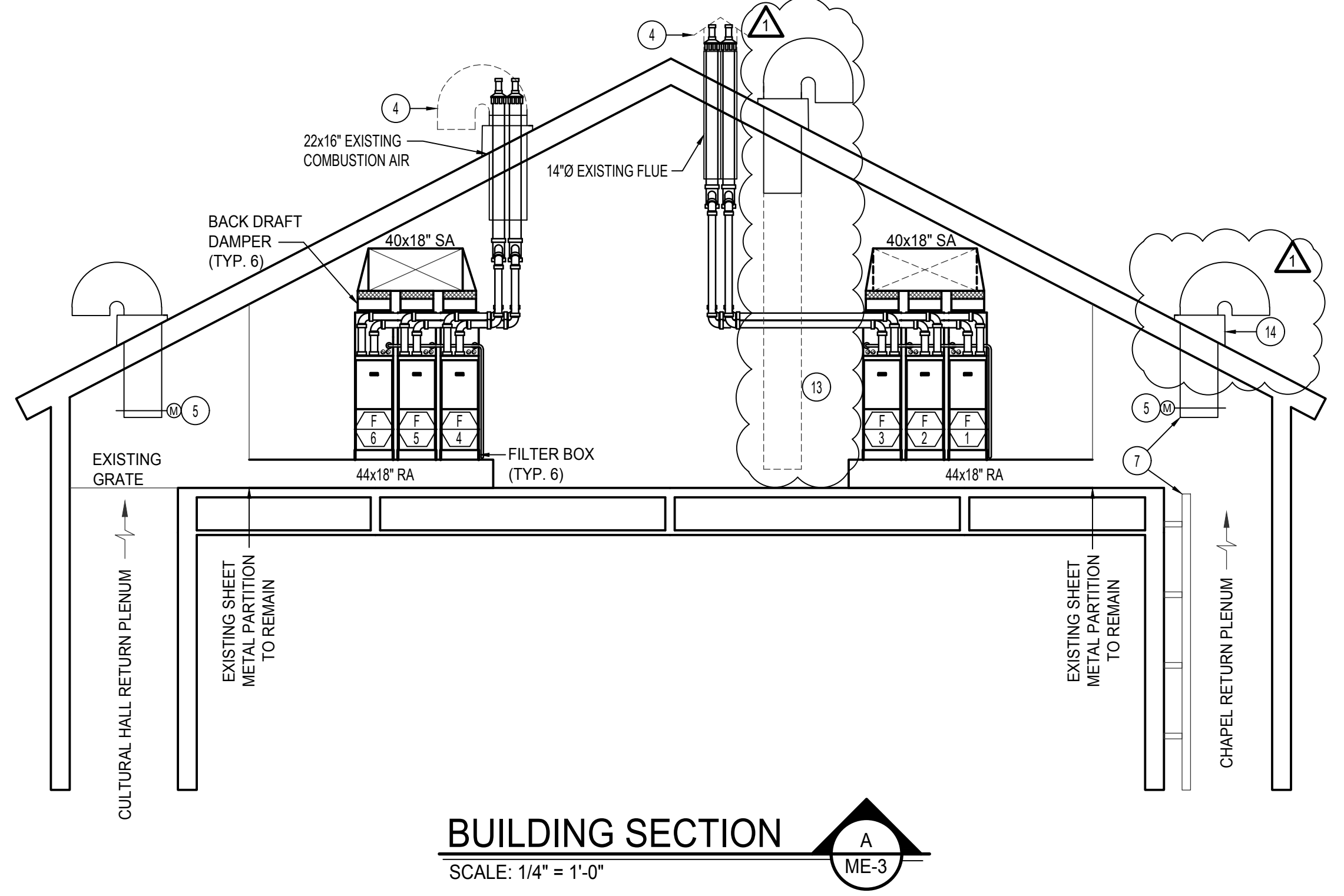
SHEET:
ME-3
 OF: 6

PLAN NOTES:

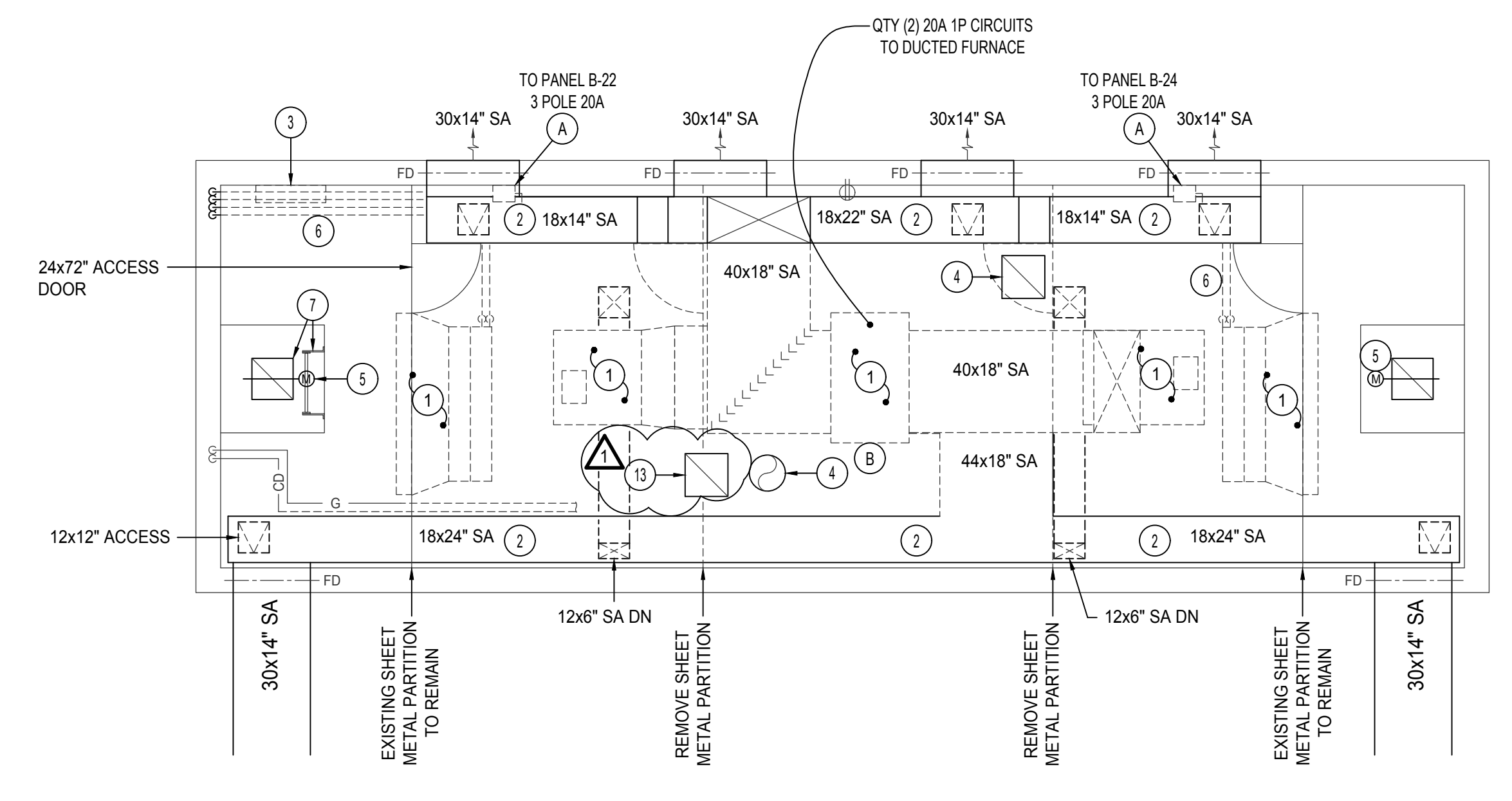
- REMOVE AND DISPOSE OF DUCT FURNACES, FANS, REFRIGERANT LINES, FLUES, DUCTWORK, COOLING COILS, SHEET METAL PARTITIONS, FILTERS, MOUNTING, CONDENSATE DRAINS, AND GAS LINES AS INDICATED ON PLANS.
- EXISTING DUCT APPROXIMATELY 2" A.F.F. TO BOTTOM OF DUCTWORK TO REMAIN.
- EXISTING CONTROLS TO BE REMOVED AND DISPOSED OF. MAINTAIN BOXES & CONDUITS FOR NEW CONTROLS.
- REMOVE TERMINATION OF FLUE OR DUCT AS REQUIRED FOR NEW FLUES AS INDICATED ON SECTION VIEW "A" ON THIS SHEET. SEAL WEATHER TIGHT AFTER WORK IS COMPLETE.
- EXISTING MOTORIZED DAMPER TO REMAIN REPLACE ACTUATOR WITH NEW SEE SHEET ME-5. PROTECT DURING CONSTRUCTION.
- ALL EXISTING & ACCESSIBLE REFRIGERANT LINES IN MEZZANINE SPACE TO BE REMOVED AND DISPOSED OF. CAP AND ABANDON IN WALL SPACE. SEE THIS SHEET FOR NEW REFRIGERANT LINES, SIZES, AND ROUTES.
- REMOVE LADDER OR DUCTWORK IF REQUIRED TO ACCOMMODATE NEW EQUIPMENT. CONTRACTOR TO RE-INSTALL AFTER WORK IS COMPLETE.
- PATCH DEMO WORK WITH SHEET METAL SIMILAR TO EXISTING CONDITIONS. SEAL AIR TIGHT.
- BALANCE TO CFM AS INDICATED ON PLANS.
- SEE SHEETS ME-5 AND ME-6 FOR WIRING DIAGRAM. RE-USE EXISTING CONDUIT AS MUCH AS POSSIBLE. COORDINATE WITH MECHANICAL TO RUN CONDUIT WITH NEW REFRIGERANT LINES.
- SEE DETAIL G ON THIS SHEET.
- NEW DUCT SMOKE DETECTOR. SEE SHEET ME-5.
- REMOVE DUCT TO WITHIN 3" FROM ROOF.
- ROUTE REFRIGERANT LINES THROUGH DUCT ROOF CURB.

ELEC. PLAN NOTES:

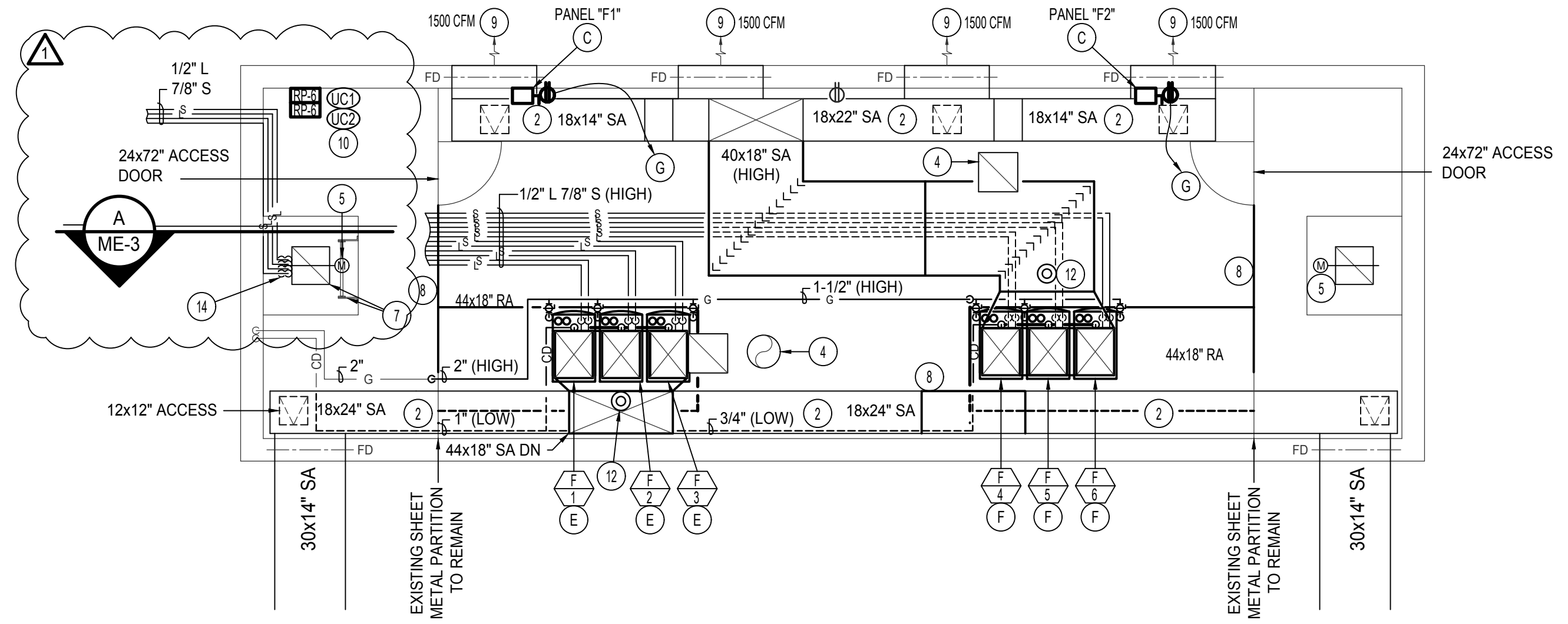
- EXISTING STARTER/DISCONNECT TO BE REMOVED AND DISPOSED OF. REMOVE CONNECTION FROM EXISTING EQUIPMENT BACK TO PANEL "B". RE-USE EXISTING CONDUIT FOR NEW EQUIPMENT.
- REMOVE ALL ASSOCIATED ELECTRICAL FROM EXISTING DUCT FURNACES. REMOVE CONDUIT BACK TO SOURCE.
- NEW ELECTRICAL PANELS "F1" & "F2" RE-USE CONDUIT AND PULL NEW CONDUCTORS FROM EXISTING PANEL "B". SEE PANEL SCHEDULES "F1" AND "F2" ON SHEET ME-4 FOR WIRE SIZE.
- RUN 2#12, 1#12 GND, 1/2" C TO NEW PANEL "F1".
- RUN 2#12, 1#12 GND, 1/2" C TO NEW PANEL "F2".
- NEW 20A GFCI RECEPTACLE. RUN 2#12, 1#12 GND, 1/2" CONDUIT TO NEW PANEL AS SHOWN.



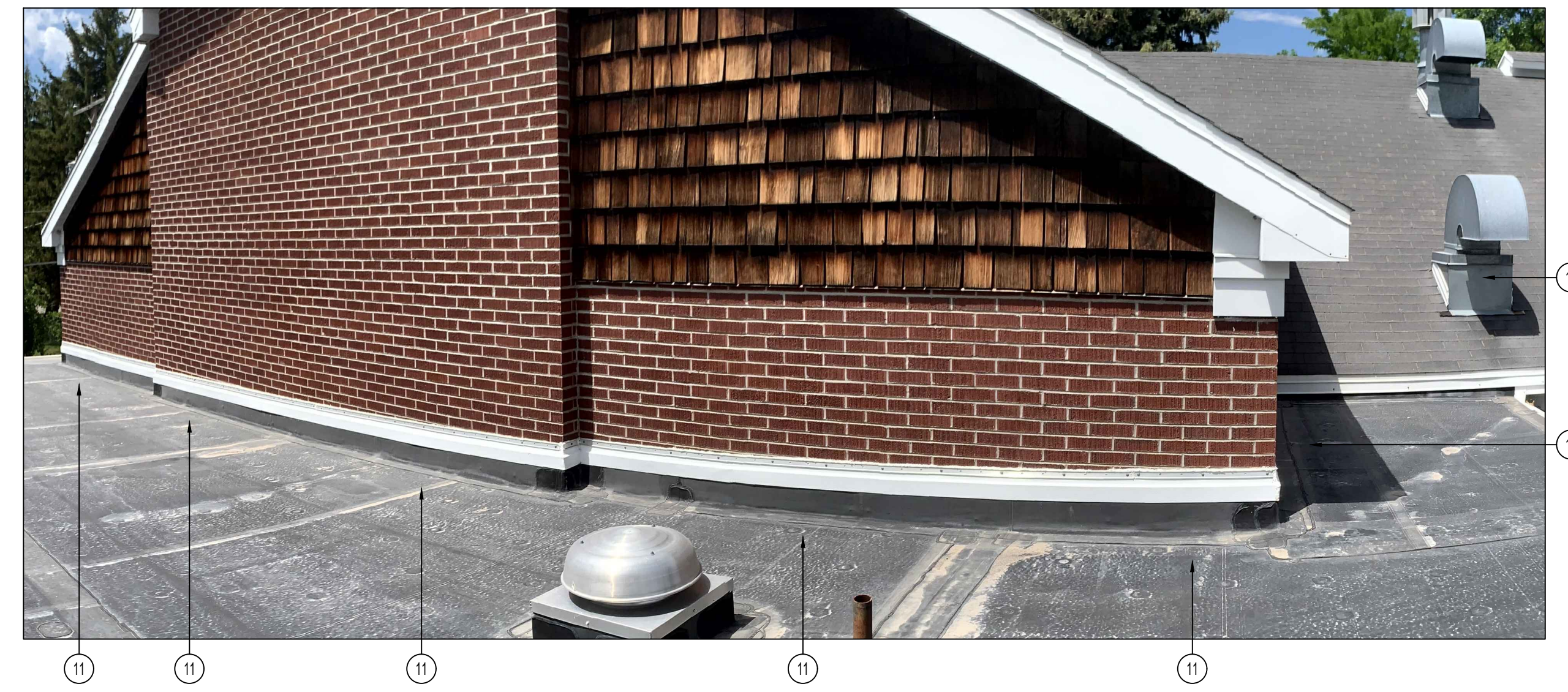
BUILDING SECTION
 SCALE: 1/4" = 1'-0"



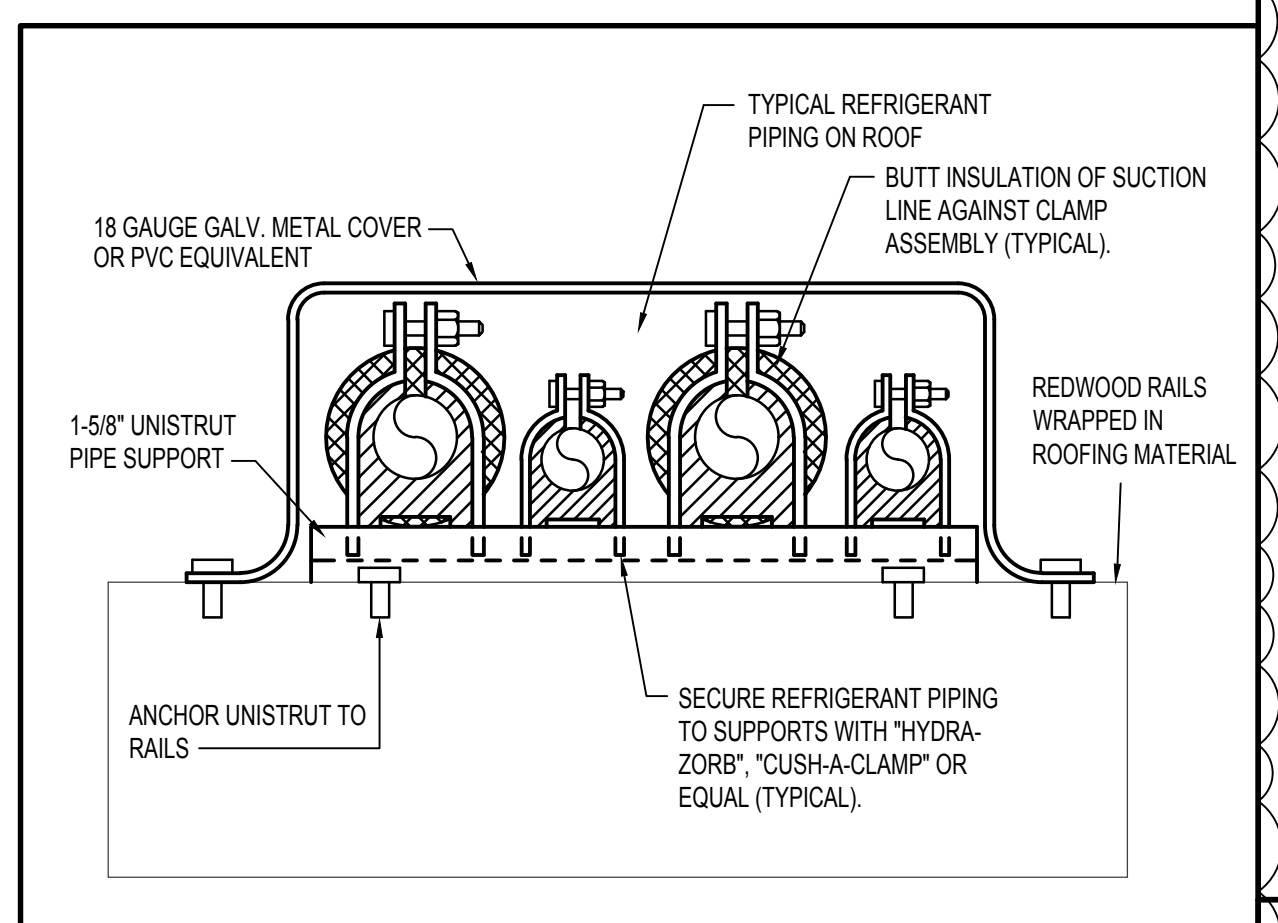
LARGE SCALE MECHANICAL MEZZANINE DEMO PLAN
 SCALE: 1/4" = 1'-0"



LARGE SCALE MECHANICAL MEZZANINE PLAN
 SCALE: 1/4" = 1'-0"



EXISTING ROOF CONDITIONS
 NO SCALE



PIPE SUPPORT ON ROOF

REVISIONS:

- ADDENDUM #1 - 07/11/22

V:\esa.local\I-Drive\22\22096 LDS Shoshone HVAC.dwg Jul 12, 2022 - 9:28am