

FURNACE AND DX COOLING COIL SCHEDULE

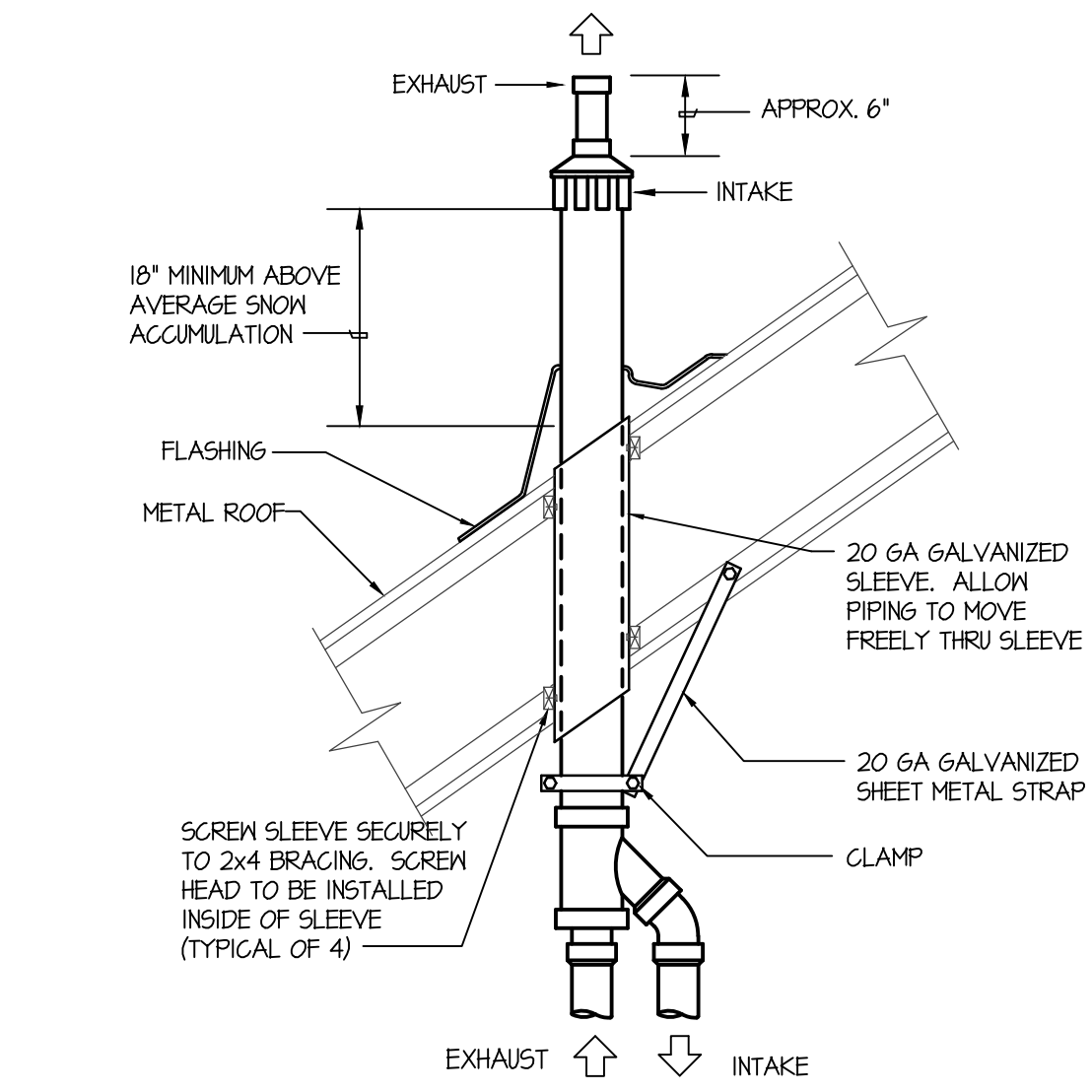
SYM.	TYPE	G.F.M.	SPE	SPEED	H.P.	CHAR.	A.G.A.			E.A.T.	L.A.T.	GAS TYPE	DX COOLING COIL				PIPING SIZES				REMARKS		
							INPUT	OUTPUT	@ ELEV.				B.T.U.	E.A.T.	L.A.T.	MAX. P.D.	LIQUID	SUCTION	G.D.	NAT GAS		INTAKE	EXHAUST
E/3a	HORIZ.	2000	60"	M-HIGH	1	120/60/1	132,000	126,000	103,320	65°F	105°F	NAT	60,000	75°F	55°F	.25"	SEE C. UNIT SCHED.	SEE C. UNIT SCHED.	3/4"	3/4"	3" PVC	3" PVC	5 TON HORIZ. FURNACE WITH FULLY CASED R-410A DX COOLING COIL TO MATCH FURNACE & VERTICAL VENT TERMINAL ASSEMBLY. PROVIDE THINNING KIT
E/3b	HORIZ.	2000	60"	M-HIGH	1	120/60/1	132,000	126,000	103,320	65°F	105°F	NAT	60,000	75°F	55°F	.25"	SEE C. UNIT SCHED.	SEE C. UNIT SCHED.	3/4"	3/4"	3" PVC	3" PVC	5 TON HORIZ. FURNACE WITH FULLY CASED R-410A DX COOLING COIL TO MATCH FURNACE & VERTICAL VENT TERMINAL ASSEMBLY.
E/3c	HORIZ.	2000	60"	M-HIGH	1	120/60/1	132,000	126,000	103,320	65°F	105°F	NAT	60,000	75°F	55°F	.25"	SEE C. UNIT SCHED.	SEE C. UNIT SCHED.	3/4"	3/4"	3" PVC	3" PVC	5 TON HORIZ. FURNACE WITH FULLY CASED R-410A DX COOLING COIL TO MATCH FURNACE & VERTICAL VENT TERMINAL ASSEMBLY. PROVIDE THINNING KIT
E/3d	HORIZ.	2000	60"	M-HIGH	1	120/60/1	132,000	126,000	103,320	65°F	105°F	NAT	60,000	75°F	55°F	.25"	SEE C. UNIT SCHED.	SEE C. UNIT SCHED.	3/4"	3/4"	3" PVC	3" PVC	5 TON HORIZ. FURNACE WITH FULLY CASED R-410A DX COOLING COIL TO MATCH FURNACE & VERTICAL VENT TERMINAL ASSEMBLY.

SEE SPECIFICATIONS FOR APPROVED MANUFACTURERS.

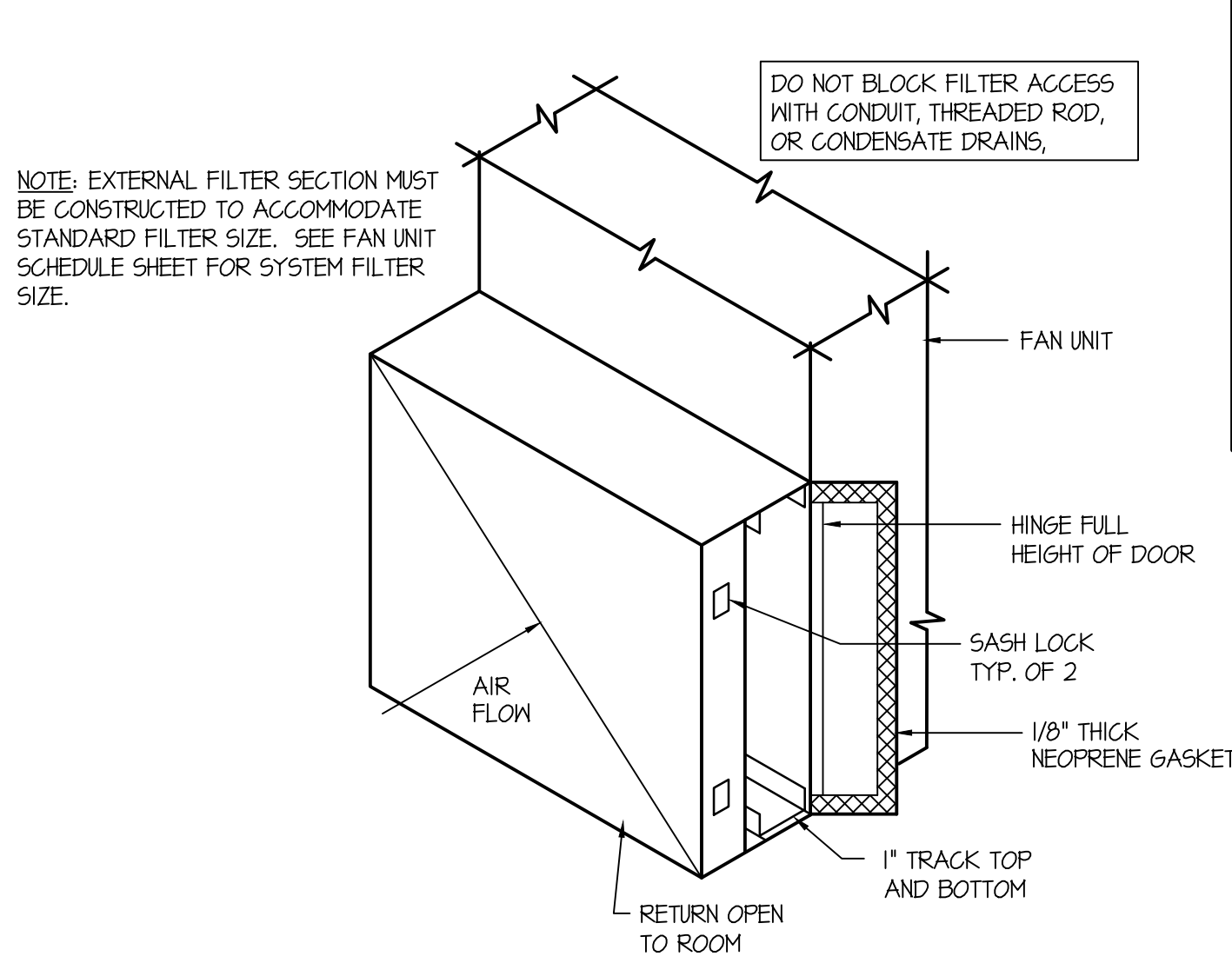
CONDENSING UNIT SCHEDULE

SYM.	BTU	EAT	CHAR.	MCA	MFS	SEER	REFR.	PIPE SIZING		REMARKS
								LIQUID	SUCTION	
C/3a	120,000	95°F	208/60/3	30.0	50.0	13.0	R-410A	(2) 3/8"	(2) 1-1/8"	10 TON CONDENSING UNIT WITH (2) CIRCUITS & 0°F LOW AMBIENT HARD START KIT.
C/3b	120,000	95°F	208/60/3	30.0	50.0	13.0	R-410A	(2) 3/8"	(2) 1-1/8"	10 TON CONDENSING UNIT WITH (2) CIRCUITS & 0°F LOW AMBIENT HARD START KIT.

SEE SPECIFICATIONS FOR APPROVED MANUFACTURERS.



CONCENTRIC VENT TERMINATION DETAIL
NO SCALE



EXTERNAL FILTER SECTION DETAIL
NO SCALE HORIZONTAL CONFIGURATION

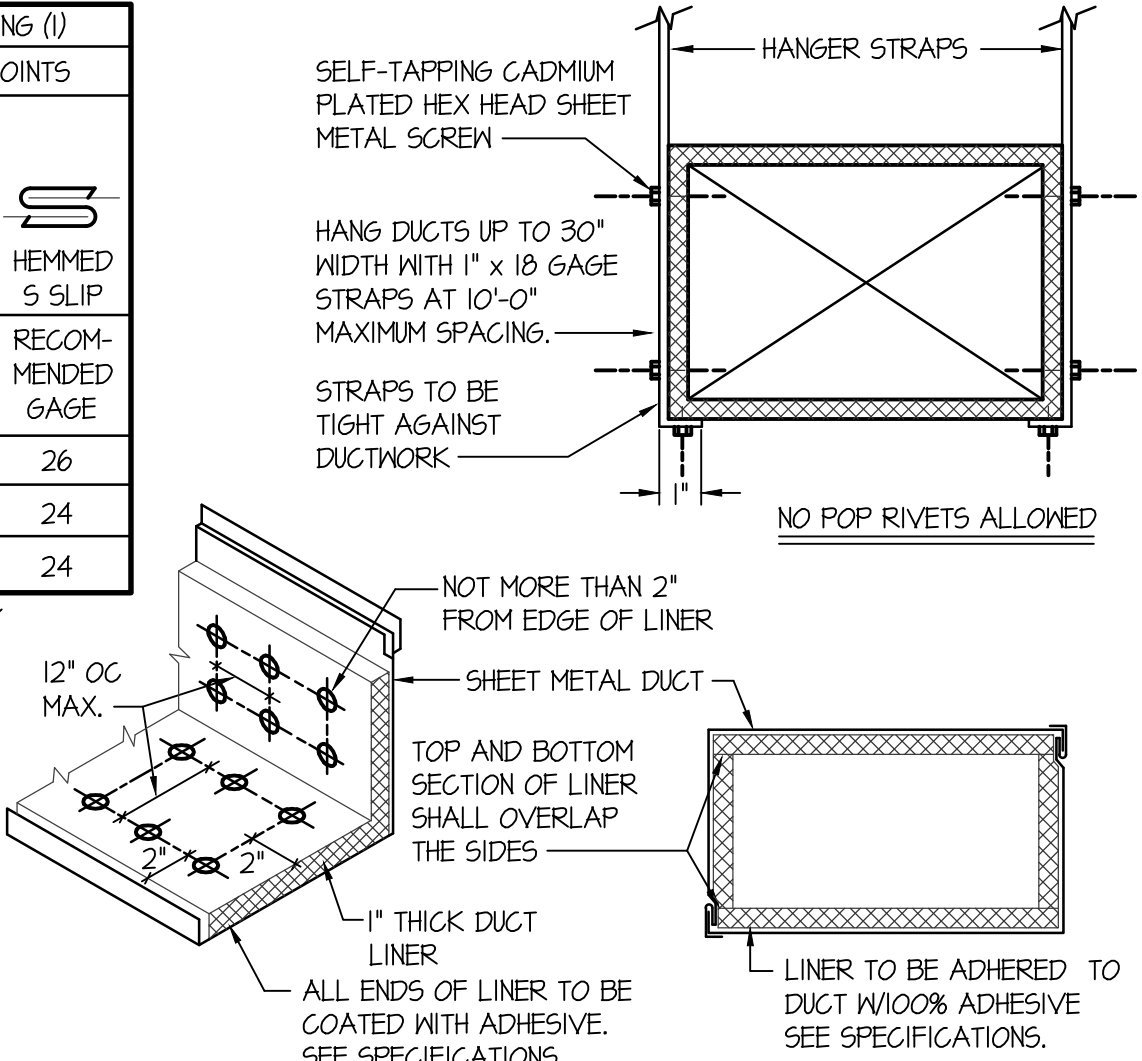
DIMENSION OF LONGEST SIDE, INCHES	SHEET METAL GAGE (ALL FOUR SIDES)	TRANSVERSE REINFORCING (1)	
		MINIMUM REINFORCING ANGLE SIZE AND MAXIMUM LONGITUDINAL SPACING BETWEEN TRANSVERSE JOINTS &/OR INTERMEDIATE REINFORCING	AT JOINTS
UP THRU 12	26	NONE REQUIRED	26 26
13 - 18	24	NONE REQUIRED	24 24
19 - 30	24	1"x1/8" @ 60" IN	- 24

(1) TRANSVERSE REINFORCING SIZE IS DETERMINED BY DIMENSION OF SIDE TO WHICH ANGLE IS APPLIED.

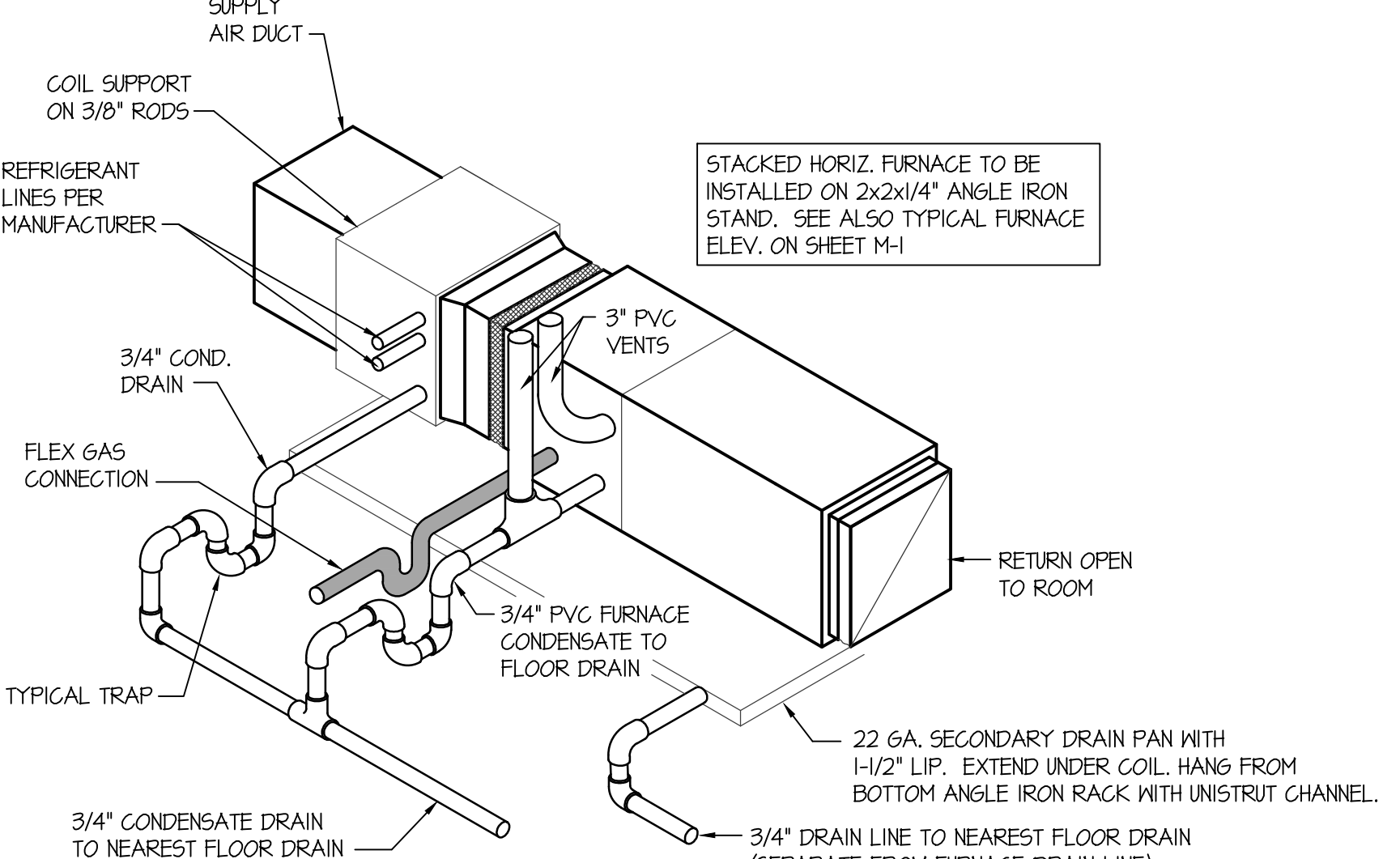
METAL FASTENERS - O-MARK INSULPING, DURO DYNE FASTENERS OR GRIPNAILS.

GRIP NAILS SHALL BE INSTALLED BY GRIPNAIL AIR HAMMER OR BY AUTOMATIC FASTENER EQUIP.

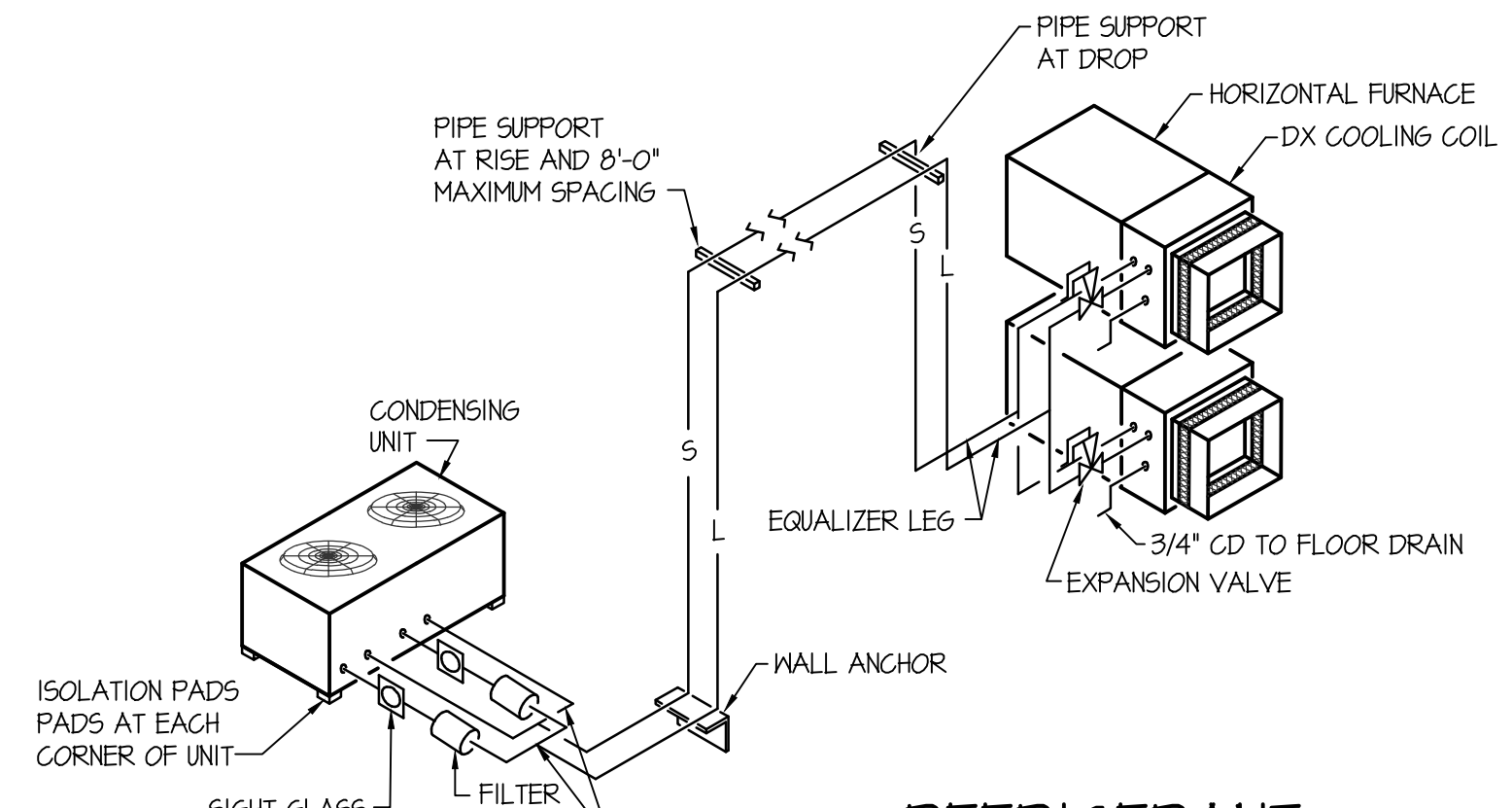
ENDS OF LINER SHALL BE BUTTED FIRMLY TOGETHER



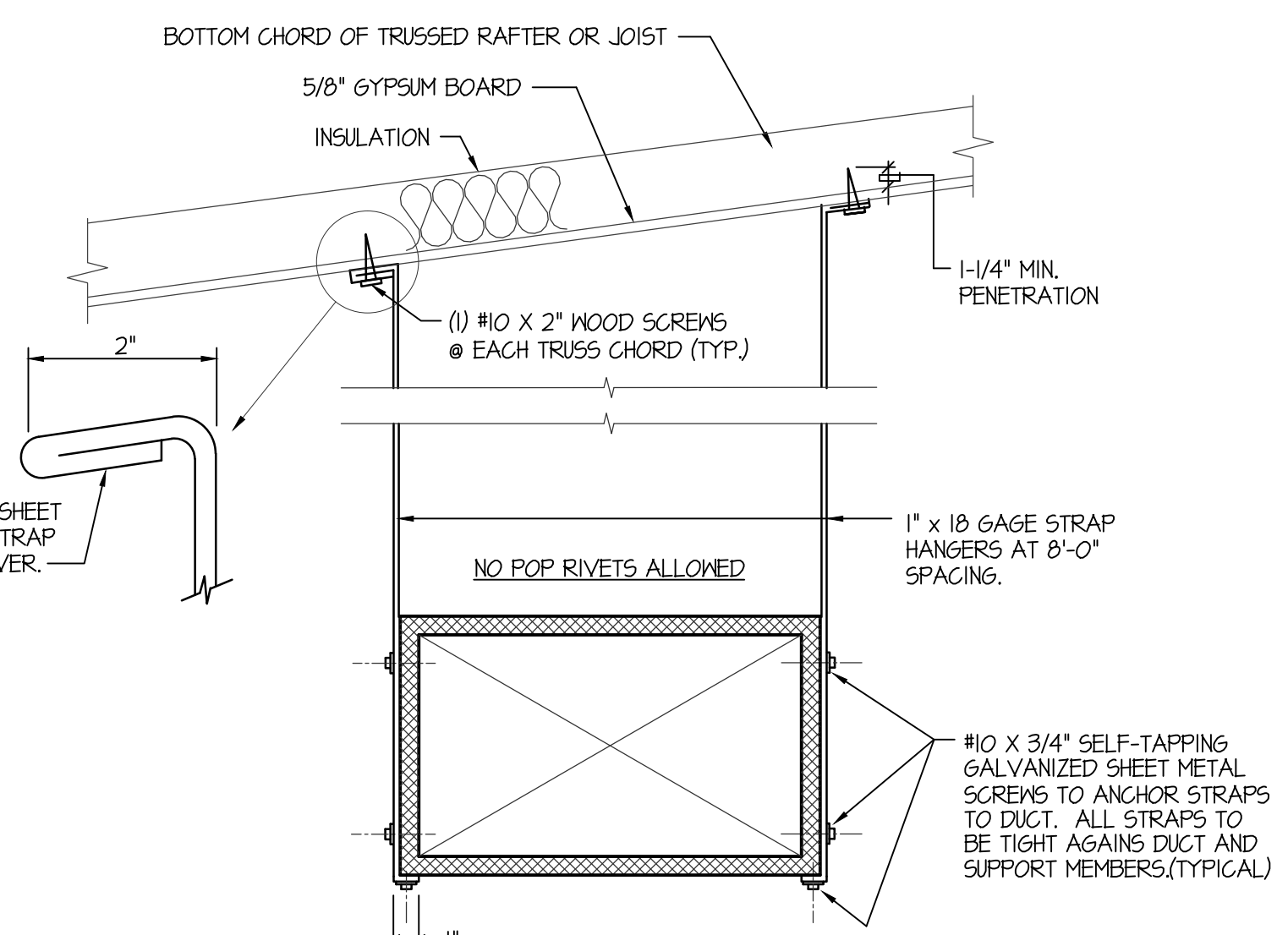
DUCT CONSTRUCTION AND HANGER DETAIL
NO SCALE



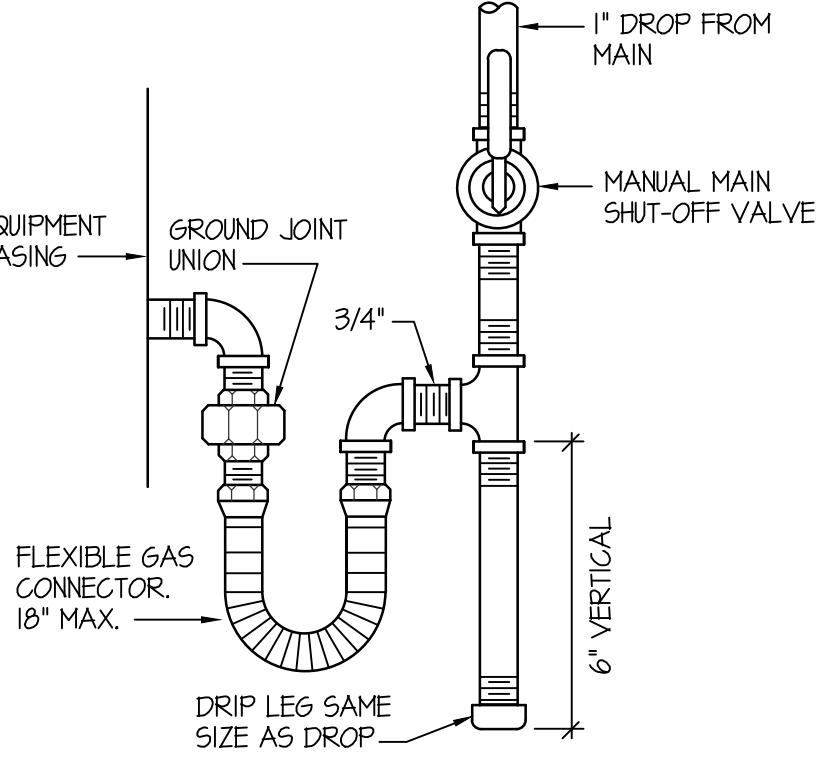
HORIZONTAL FURNACE DETAIL
NO SCALE



REFRIGERANT PIPING DIAGRAM
NO SCALE



DUCT STRAP HANGER DETAIL
NO SCALE



GAS LINE CONNECTION DETAIL
NO SCALE

- NOTES:
- THERMOSTAT CABLE- 4, 8 OR 12 CONDUCTOR- 18 AWG SOLID COPPER WIRE INSULATED WITH HIGH DENSITY POLYETHYLENE. CONDUCTORS PARALLEL. ENCLOSED IN BROWN PVC JACKET. (NO 22 AWG CABLE ALLOWED).
 - IF CONDENSING UNITS HAVE THEIR OWN POWER SUPPLY IT MAY BE NECESSARY TO ADD ADDITIONAL RELAYS IN CONDENSING UNIT TO PROPERLY INTERFACE CONTROLS.
 - USE WIRE NUT CONNECTORS FOR SPLICING CONDUCTORS IN SPECIFIED LOCATIONS. AND TYTON TYPE CRIMP CONNECTORS FOR TERMINAL CONNECTIONS. NO TERMINAL CONNECTORS REQUIRED AT THERMOSTAT OR SENSOR.
 - DO NOT RUN ANY OTHER WIRING IN THIS CONDUIT EXCEPT THERMOSTAT CABLE.
 - VERIFY THAT FURNACE FAN SPEED CONTROL WIRING IS SET TO MATCH SCHEDULE SHEET AND THAT FAN OPERATES AT COOLING SPEED ONLY.
 - DO NOT SPLICE WIRE IN RUNS FROM SENSOR TO THERMOSTAT, THERMOSTAT TO FURNACE, AND THERMOSTAT TO DISCHARGE AIR SENSOR.
 - PROVIDE CHASE NIPPLE W/PLASTIC BUSHING WHEN ATTACHING J-BOX TO EQUIPMENT.
 - PROVIDE CABLE CLAMP SO THAT CABLES CANNOT BE PULLED OUT OF J-BOX.

CONTROL EQUIPMENT

MARK	DESCRIPTION	CAT. NO.(1)	MARK	DESCRIPTION	CAT. NO.(1)
T-1	THERMOSTAT	T7350H1009	RP-5	RELAY PANEL 18X18X6W/COVER	(2)
DS-1	DISCHARGE AIR SENSOR	C7041B2005	TB-1	TERMINAL STRIP	AMP
DM-1	DAMPER MOTOR TWO POSITION	MSB105A1008	TB-2	TERMINAL STRIP	AMP
CO2	CO2 SENSOR	C72328	R1-R2	RELAY 1DEC	RH4B-UL
X-2	TRANSFORMER 120V/24V 50VA	AT150F1002	S1-S2	SOCKET 1DEC	SH4B-05
SD-1	DUCT SMOKE DETECTOR	DP2030B5003	R3-R6	RELAY 1DEC	RH2B-UL
SR	SMOKE RELAY 30 AMP 120V COIL	(3)	S3-S6	SOCKET 1DEC	SH2B-05
			C1	MTG RAIL 1DEC	BND-1000
			X1	TRANSFORMER 120/24V 100VA	RIB TR100VA001

- (1) ALL CATALOG NUMBERS SHOWN ARE HONEYWELL UNLESS NOTED OTHERWISE. (2) SEE SPECIFICATION.
 (3) PROVIDE ENCLOSURE (4) TO BE PURCHASED FROM AN APPROVED PANEL BUILDER SEE SPECIFICATION.