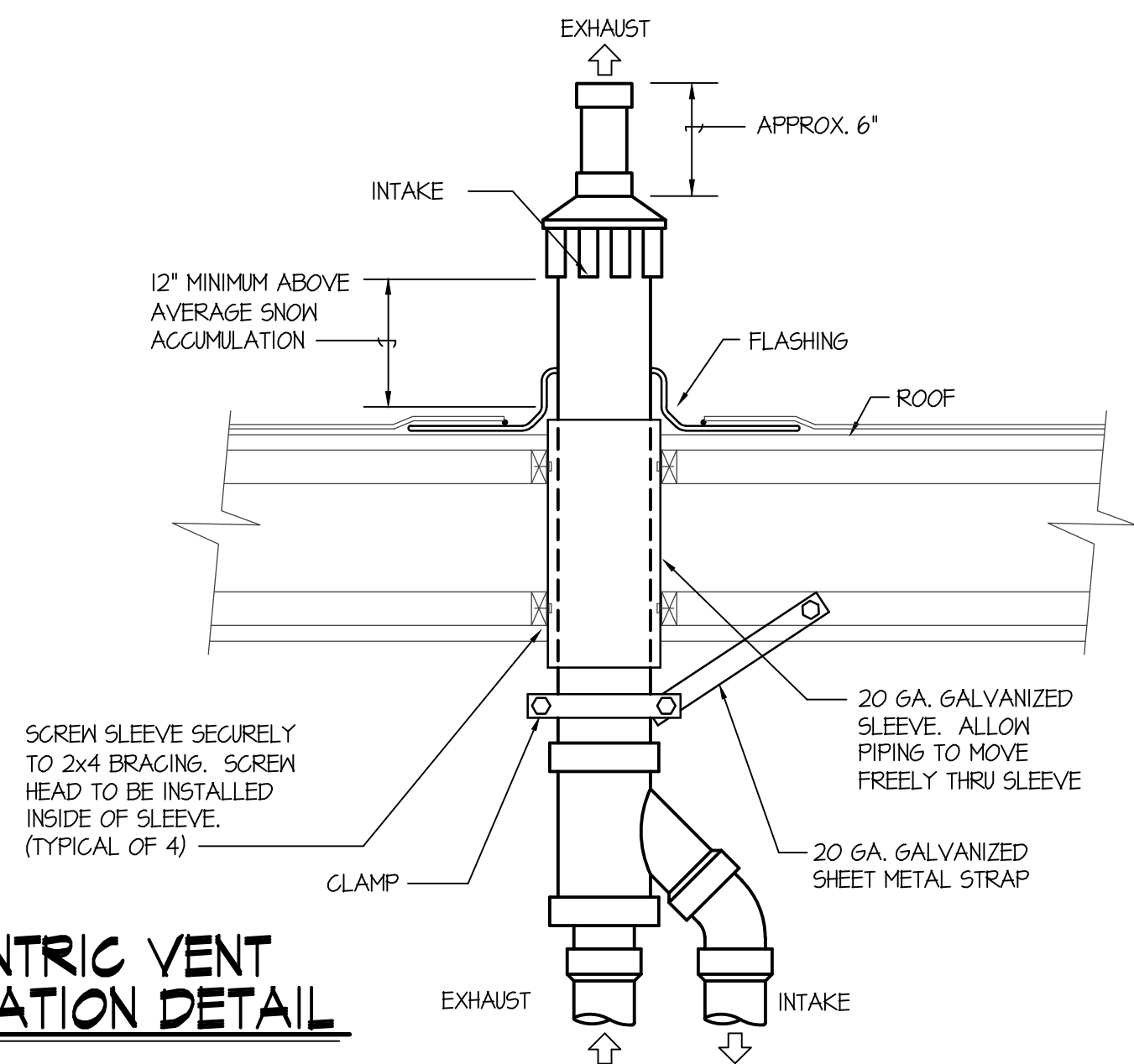
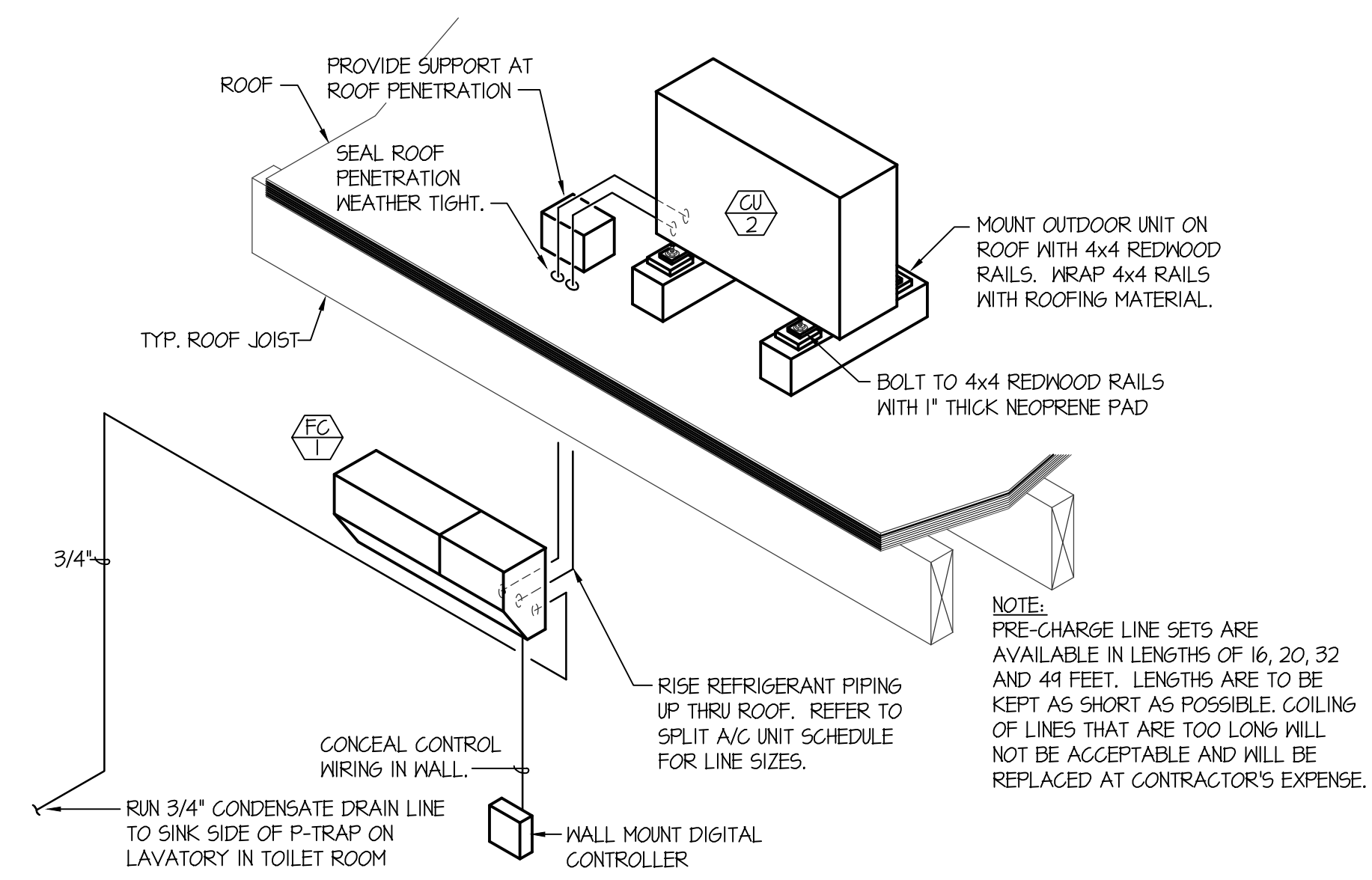


REGISTER INSTALLATION DETAIL
NO SCALE



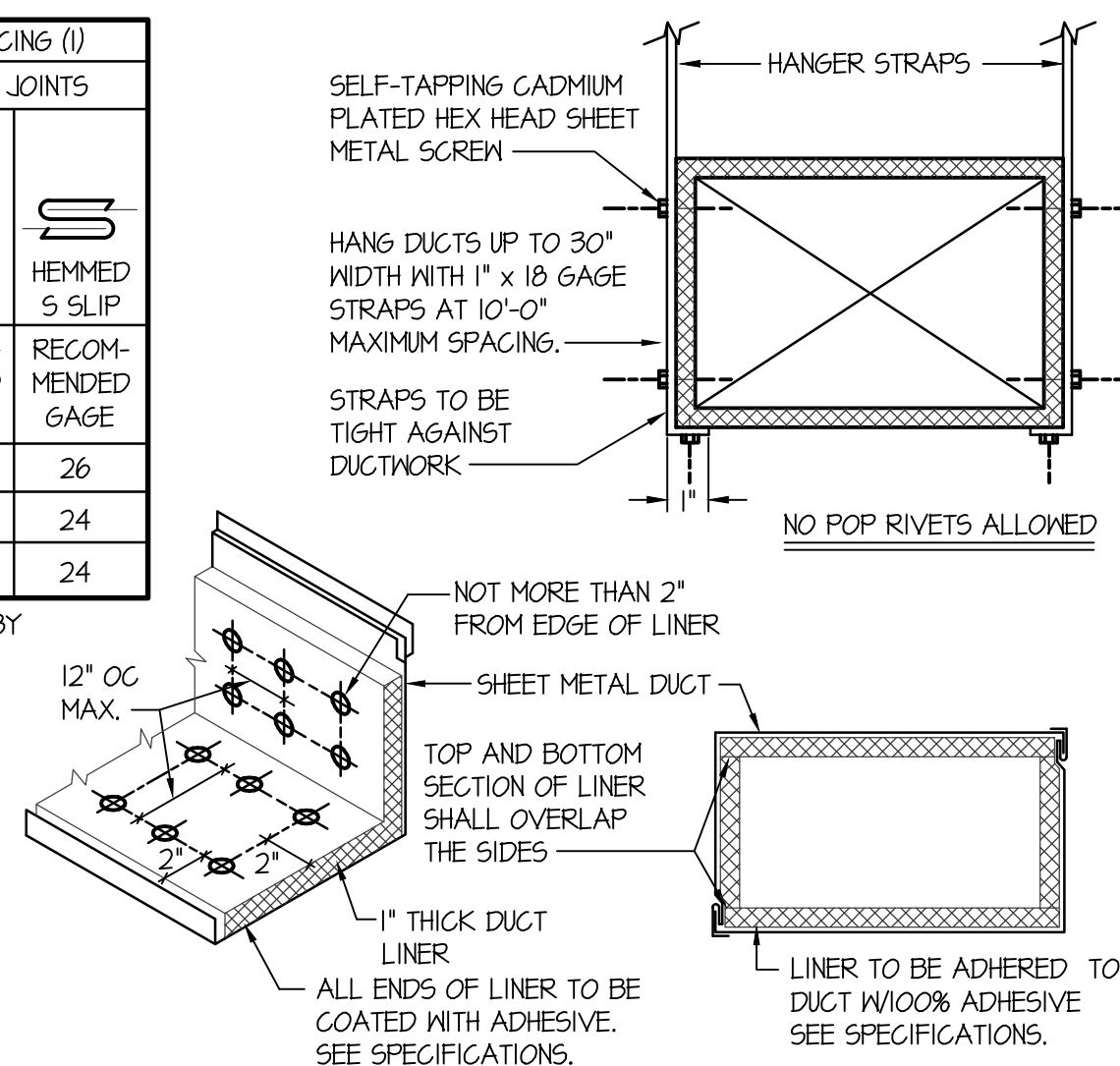
CONCENTRIC VENT TERMINATION DETAIL
NO SCALE



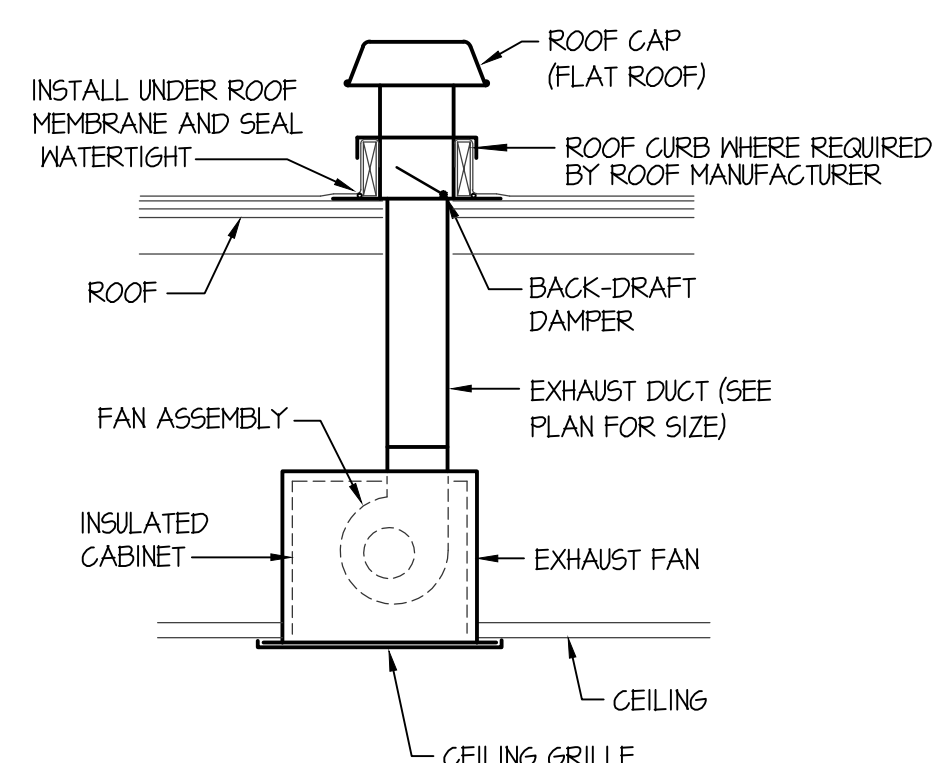
FAN COIL & REFRIGERANT PIPING DETAIL
NO SCALE

DIMENSION OF LONGEST SIDE, INCHES	SHEET METAL GAGE (ALL FOUR SIDES)	TRANSVERSE REINFORCING (1)	
		MINIMUM REINFORCING ANGLE SIZE AND MAXIMUM LONGITUDINAL SPACING BETWEEN TRANSVERSE JOINTS &/OR INTERMEDIATE REINFORCING	AT JOINTS
UP THRU 12	26	NONE REQUIRED	26
13 - 18	24	NONE REQUIRED	24
19 - 30	24	1"x1/8" @ 60 IN	24

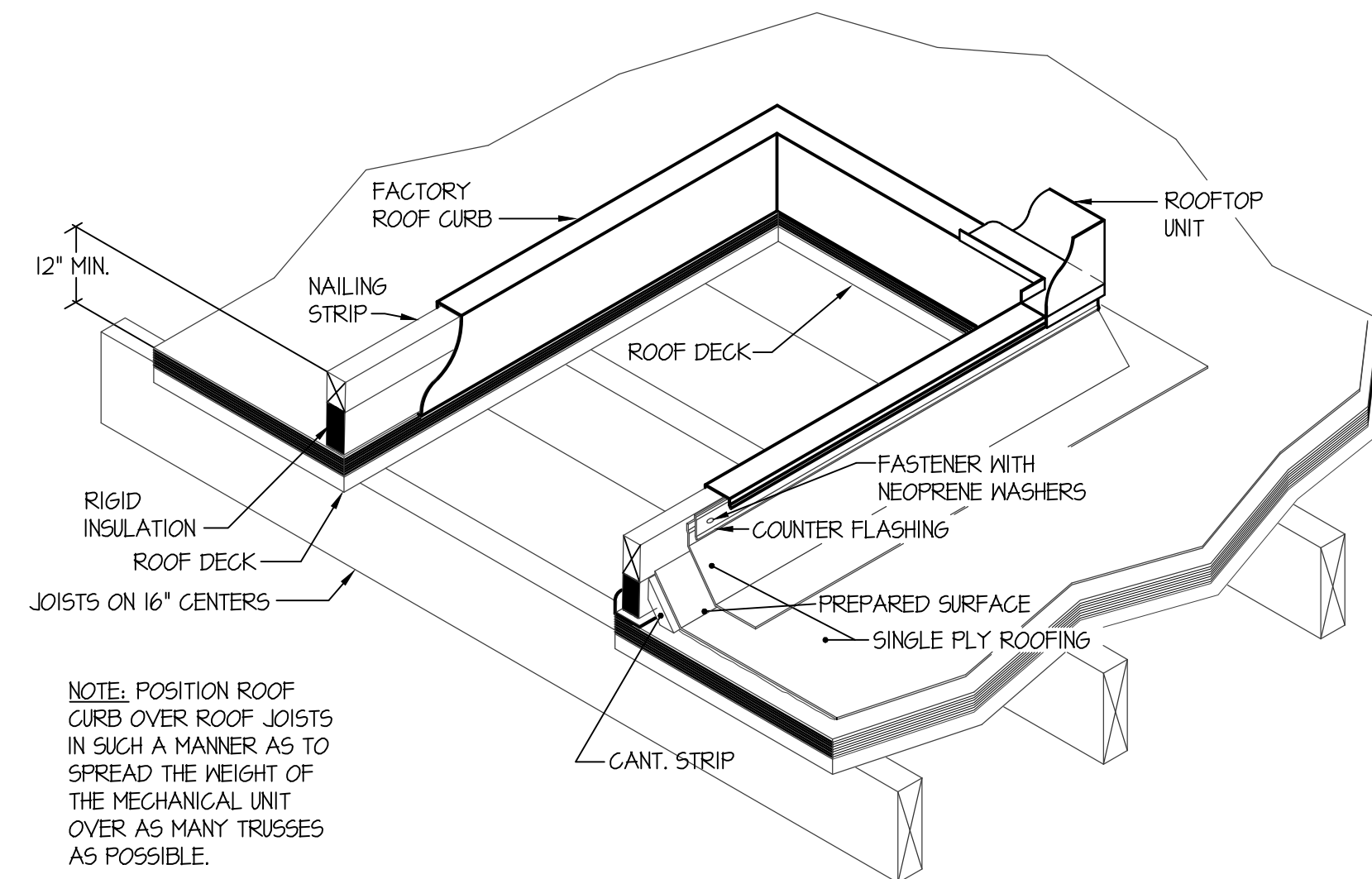
(1) TRANSVERSE REINFORCING SIZE IS DETERMINED BY DIMENSION OF SIDE TO WHICH ANGLE IS APPLIED.
METAL FASTENERS - O MARK INSULPINS, DURO DYNE FASTENERS OR GRIPNAILS.
GRIP NAILS SHALL BE INSTALLED BY GRIPNAIL AIR HAMMER OR BY AUTOMATIC FASTENER EQUIP.



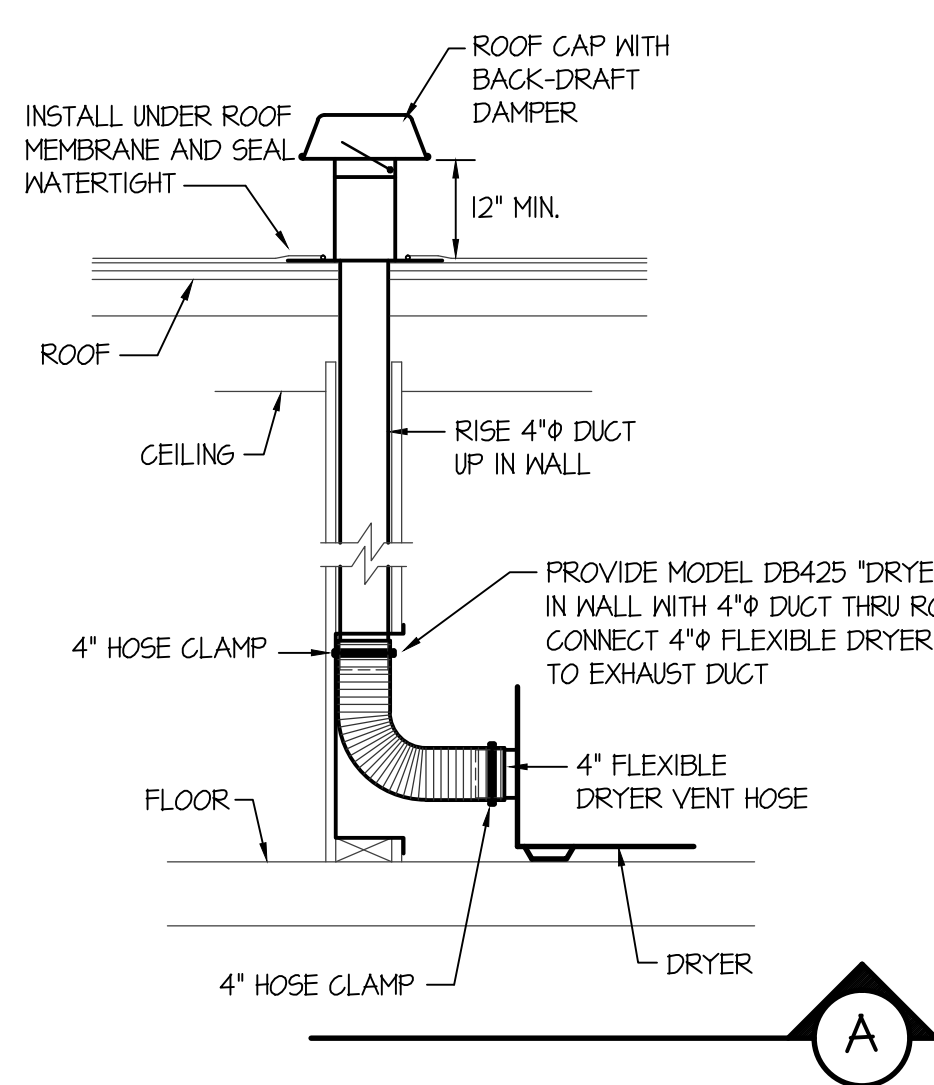
ROOFTOP UNIT DUCT CONSTRUCTION AND HANGER DETAIL
NO SCALE



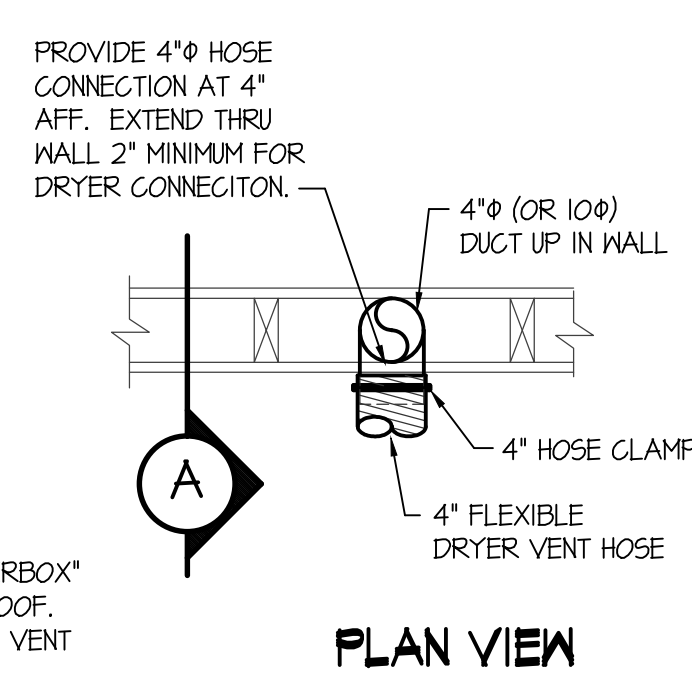
CEILING MOUNTED EXHAUST FAN DETAIL
NO SCALE



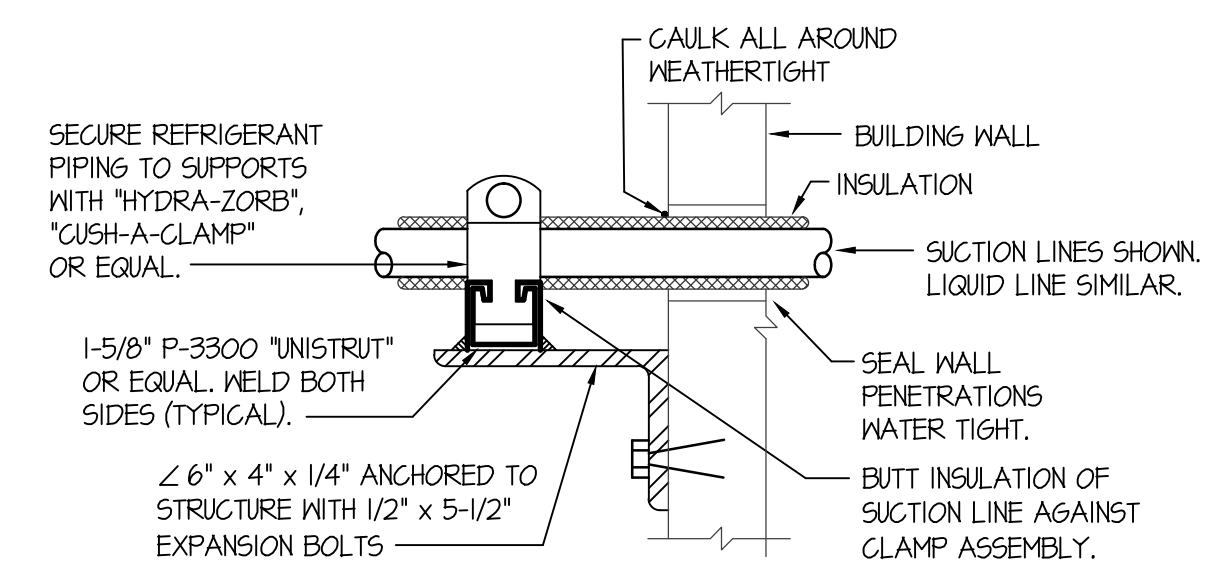
TYPICAL ROOFTOP MOUNTING DETAIL
NO SCALE



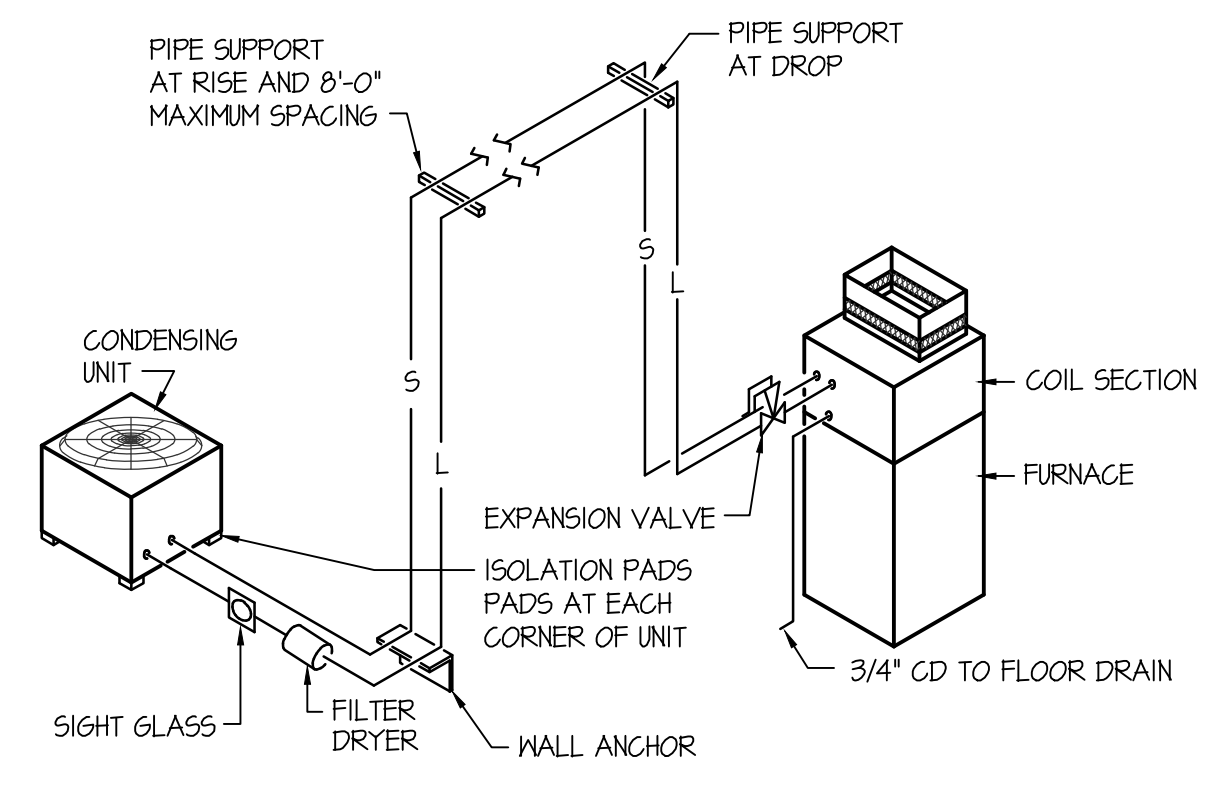
DRYER VENT DETAIL
NO SCALE



NOTE:
1- NO PROJECTIONS SUCH AS SCREWS OF SHEET METAL CORNERS IN DUCTWORK OR AT ELBOWS ARE ALLOWED.
2- MAXIMUM DUCT LENGTH IS 25'-0" INCLUDING 5'-0" REDUCTION FOR EACH 90° ELBOW.



REFRIG. PIPING SUPPORT AT WALL
NO SCALE



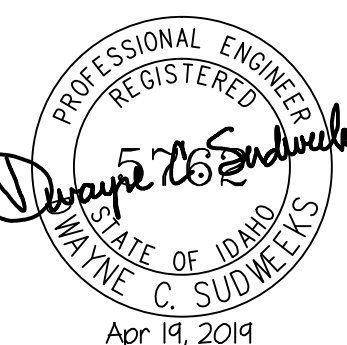
REFRIGERANT PIPING DIAGRAM
NO SCALE (5 TON AND SMALLER)

F:\1914006 CANDY JAR\1914006 M-2.dwg Apr 19, 2014 - 4:04pm



Engineered Systems Associates
Mechanical Engineers
Dwayne Sudweeks
1355 East Center - Pocatello, Idaho 83201
Phone: (208) 233-0501 Fax: (208) 233-0529 email: esa@engsystems.com

THE CANDY JAR
BLACKFOOT, IDAHO
105 NW. MAIN STREET
MECHANICAL DETAILS



DRWN. BY: SR	CHK. BY: DCS
JOB NO. 19006	DATE: APRIL 2014

SHEET:
M-2
OF: THREE