



**Engineered Systems Associates  
Mechanical Engineers**

Dwayne Sudweeks P.E., Dave Hansen P.E., Tanner Davis P.E.  
1355 East Center - Pocatello, Idaho 83201  
Phone: (208) 233-0501 email: esa@engsystems.com

PROPERTY # 503-9002  
HVAC REPLACEMENT FOR:  
**LDS SHOSHONE 1st WARD**  
SHOSHONE, IDAHO

MEZZANINE MECHANICAL PLAN

PROJECT:



DRWN. BY: TCD  
CKD. BY: DCS  
JOB NO.: 22096  
DATE: 06/27/22

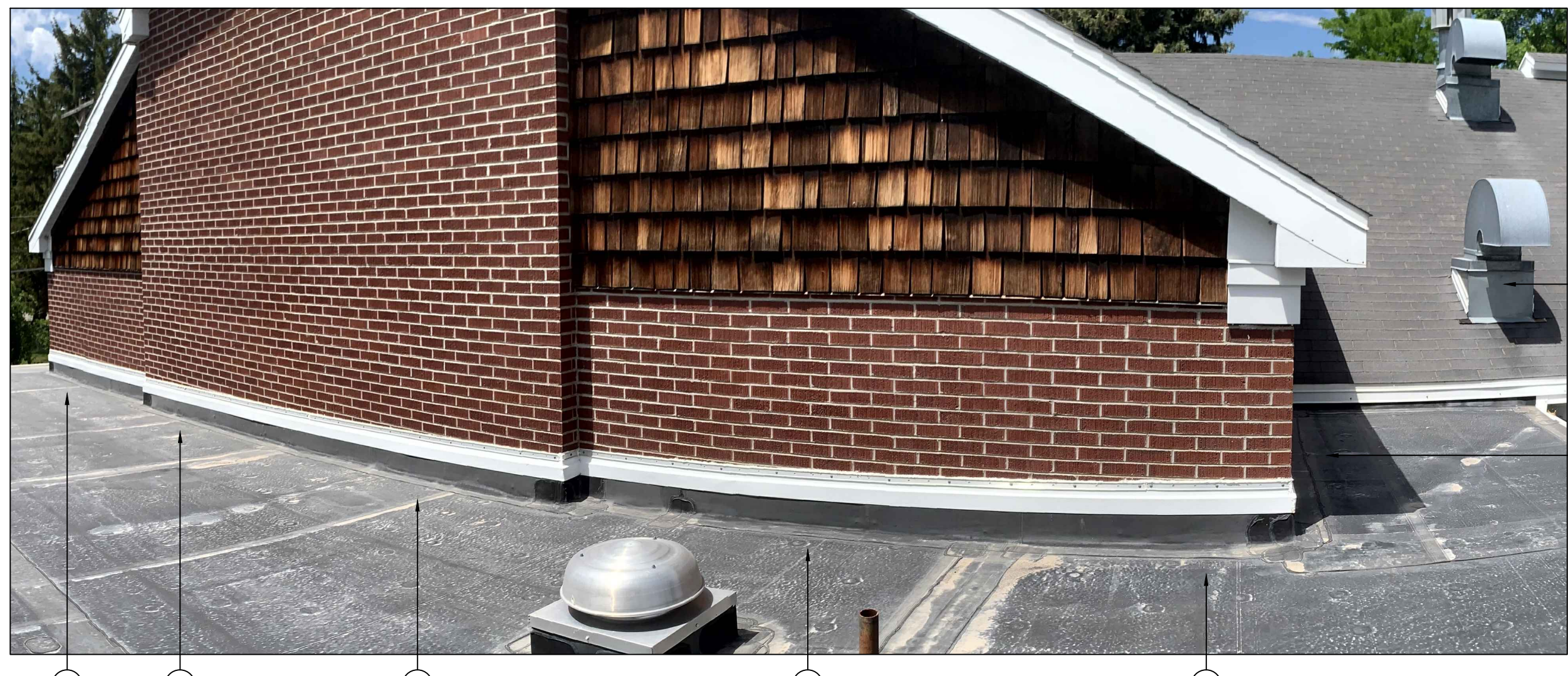
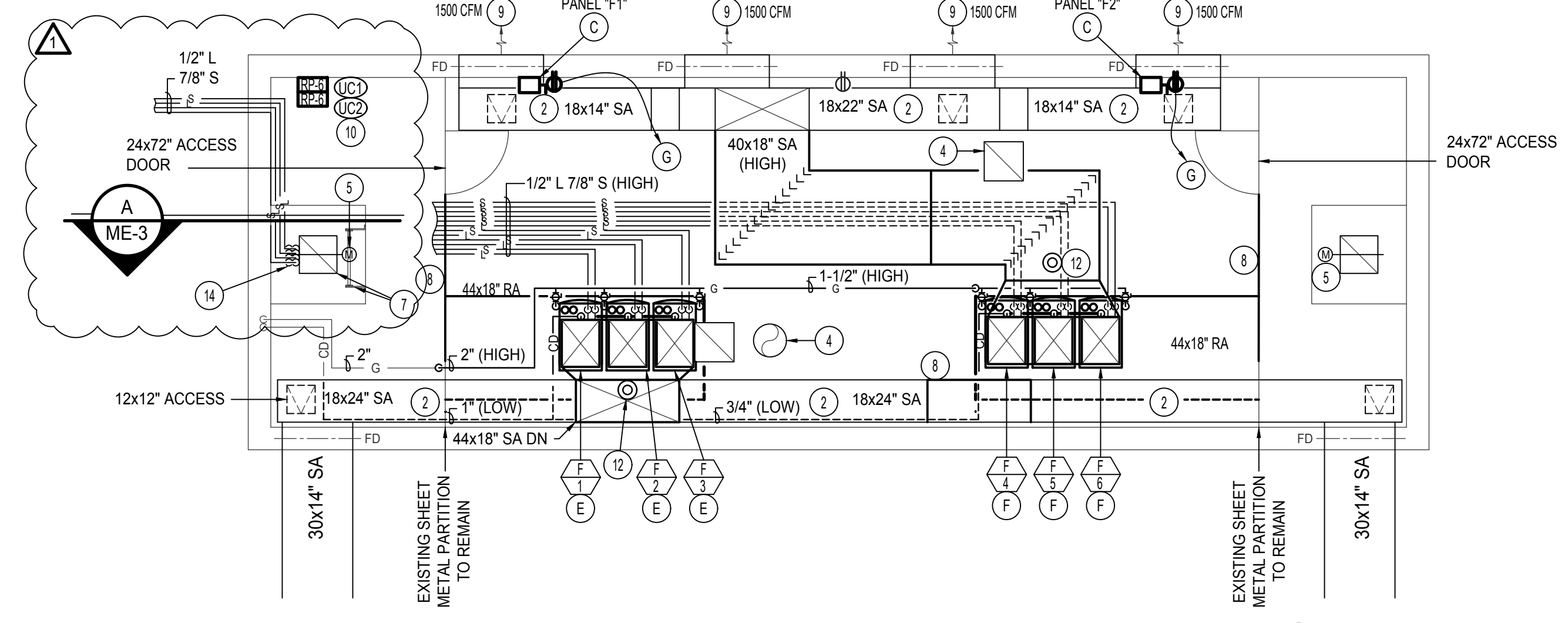
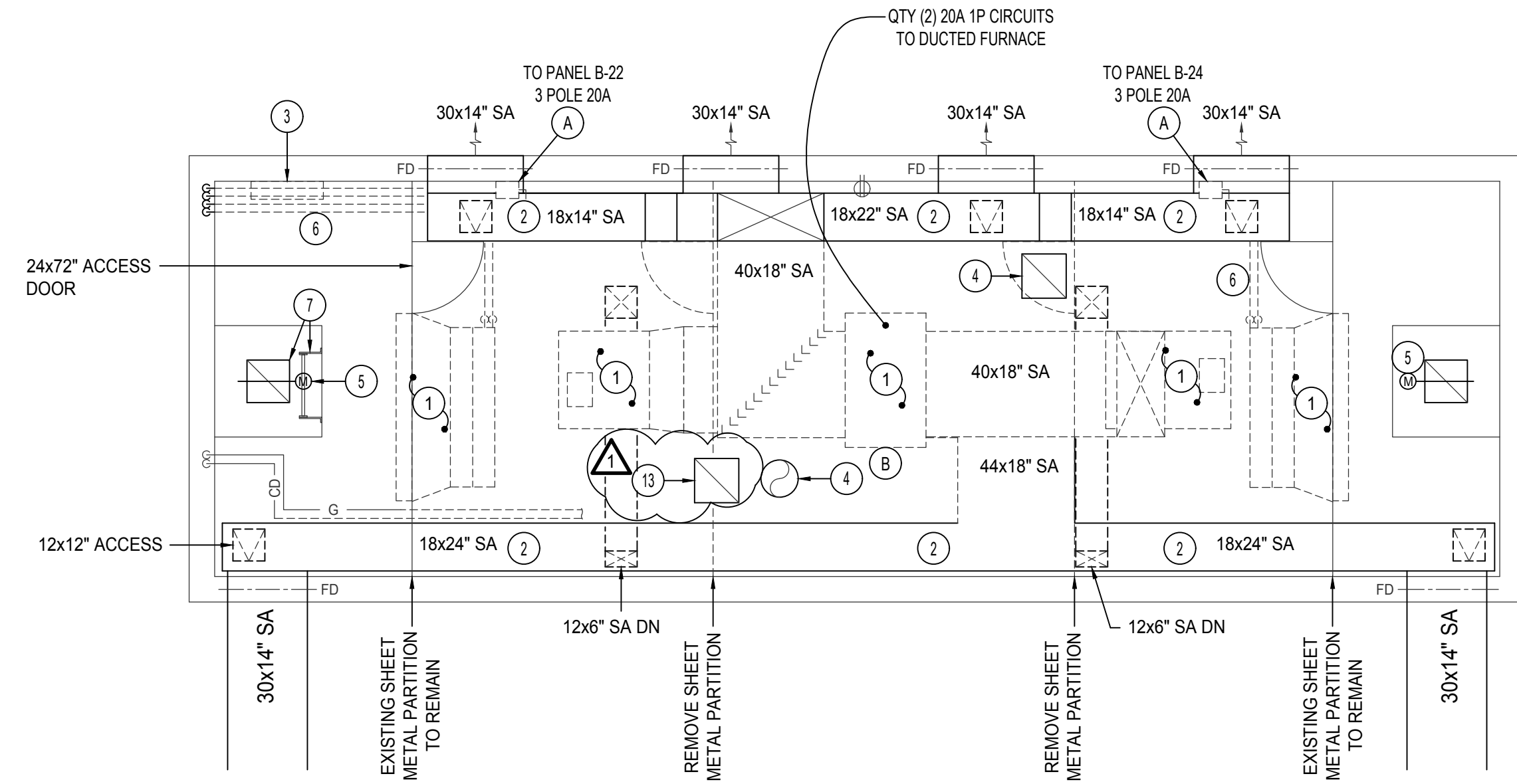
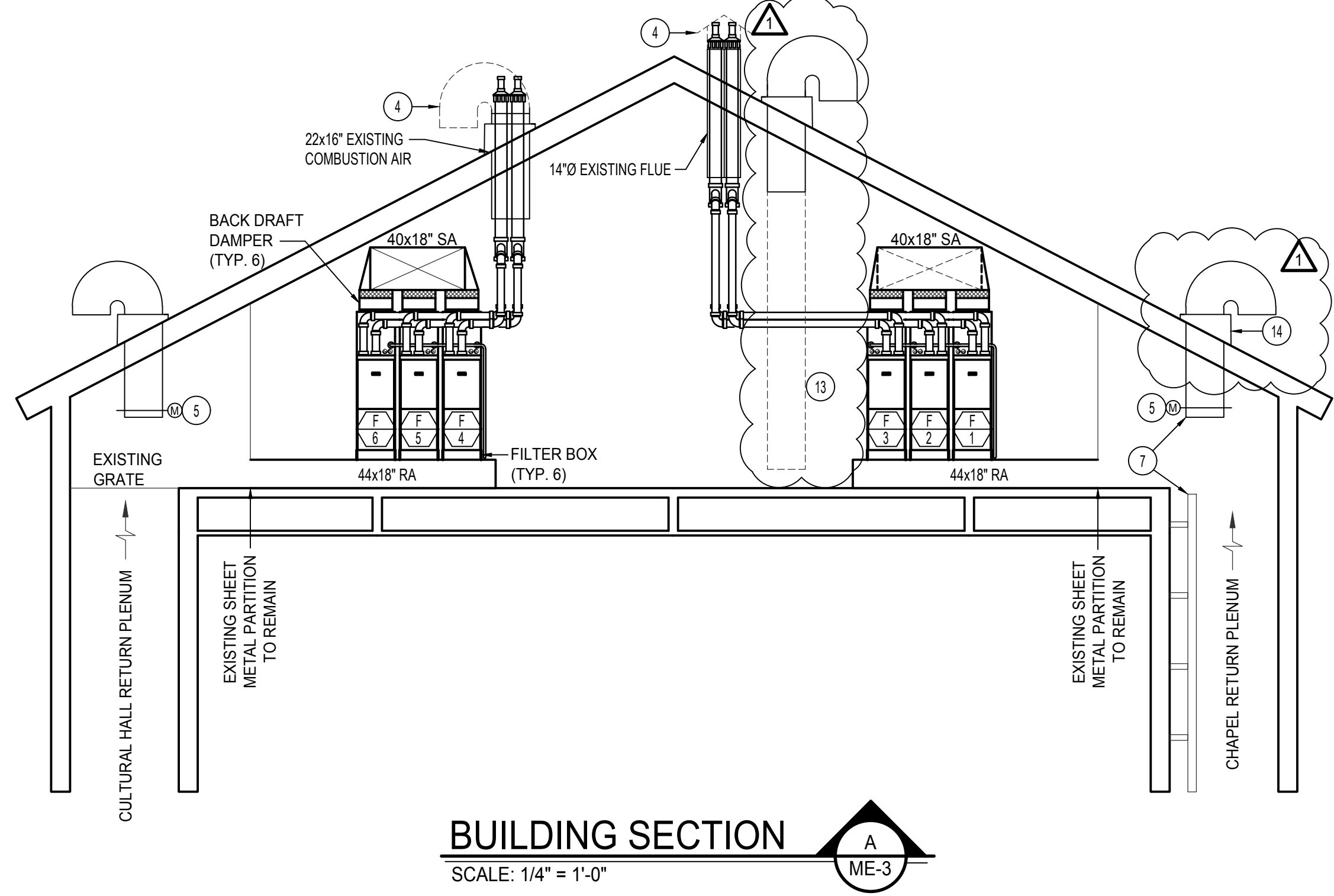
SHEET:  
**ME-3**  
OF: 6

**PLAN NOTES:**

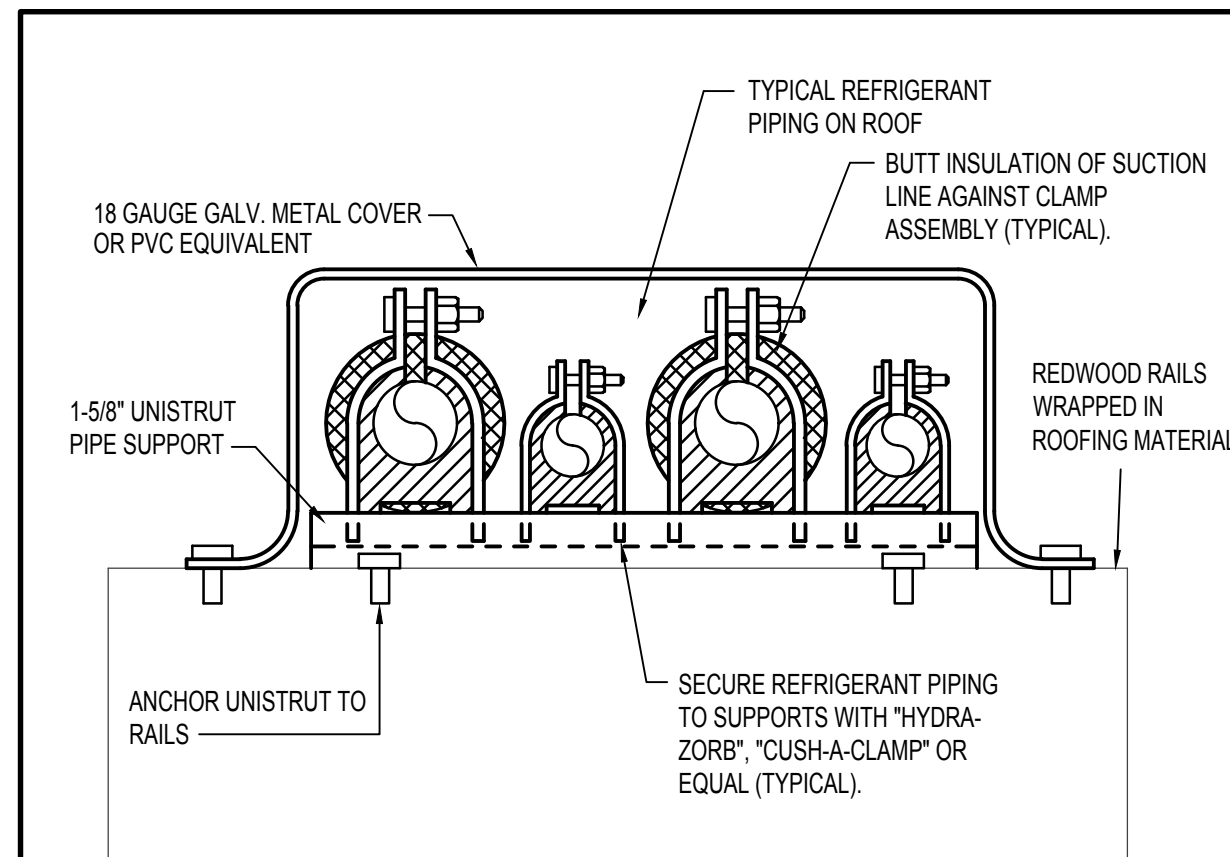
- 1 REMOVE AND DISPOSE OF DUCT FURNACES, FANS, REFRIGERANT LINES, FLUES, DUCTWORK, COOLING COILS, SHEET METAL PARTITIONS, FILTERS, MOUNTING, CONDENSATE DRAINS, AND GAS LINES AS INDICATED ON PLANS.
- 2 EXISTING DUCT APPROXIMATELY 2" A.F.F. TO BOTTOM OF DUCTWORK TO REMAIN.
- 3 EXISTING CONTROLS TO BE REMOVED AND DISPOSED OF. MAINTAIN BOXES & CONDUITS FOR NEW CONTROLS.
- 4 REMOVE TERMINATION OF FLUE OR DUCT AS REQUIRED FOR NEW FLUES AS INDICATED ON SECTION VIEW "A" ON THIS SHEET. SEAL WEATHER TIGHT AFTER WORK IS COMPLETE.
- 5 EXISTING MOTORIZED DAMPER TO REMAIN REPLACE ACTUATOR WITH NEW SEE SHEET ME-5. PROTECT DURING CONSTRUCTION.
- 6 ALL EXISTING & ACCESSIBLE REFRIGERANT LINES IN MEZZANINE SPACE TO BE REMOVED AND DISPOSED OF. CAP AND ABANDON IN WALL SPACE. SEE THIS SHEET FOR NEW REFRIGERANT LINES, SIZES, AND ROUTES.
- 7 REMOVE LADDER OR DUCTWORK IF REQUIRED TO ACCOMMODATE NEW EQUIPMENT. CONTRACTOR TO RE-INSTALL AFTER WORK IS COMPLETE.
- 8 PATCH DEMO WORK WITH SHEET METAL SIMILAR TO EXISTING CONDITIONS. SEAL AIR TIGHT.
- 9 BALANCE TO CFM AS INDICATED ON PLANS.
- 10 SEE SHEETS ME-5 AND ME-6 FOR WIRING DIAGRAM. RE-USE EXISTING CONDUIT AS MUCH AS POSSIBLE. COORDINATE WITH MECHANICAL TO RUN CONDUIT WITH NEW REFRIGERANT LINES.
- 11 SEE DETAIL G ON THIS SHEET.
- 12 NEW DUCT SMOKE DETECTOR. SEE SHEET ME-5.
- 13 REMOVE DUCT TO WITHIN 3" FROM ROOF.
- 14 ROUTE REFRIGERANT LINES THROUGH DUCT ROOF CURB.

**ELEC. PLAN NOTES:**

- A EXISTING STARTER/DISCONNECT TO BE REMOVED AND DISPOSED OF. REMOVE CONNECTION FROM EXISTING EQUIPMENT BACK TO PANEL "B". RE-USE EXISTING CONDUIT FOR NEW EQUIPMENT.
- B REMOVE ALL ASSOCIATED ELECTRICAL FROM EXISTING DUCT FURNACES. REMOVE CONDUIT BACK TO SOURCE.
- C NEW ELECTRICAL PANELS "F1" & "F2" RE-USE CONDUIT AND PULL NEW CONDUCTORS FROM EXISTING PANEL "B". SEE PANEL SCHEDULES "F1" AND "F2" ON SHEET ME-4 FOR WIRE SIZE.
- E RUN 2#12, 1#12 GND, 1/2" C TO NEW PANEL "F1".
- F RUN 2#12, 1#12 GND, 1/2" C TO NEW PANEL "F2".
- G NEW 20A GFCI RECEPTACLE. RUN 2#12, 1#12 GND, 1/2" CONDUIT TO NEW PANEL AS SHOWN.



**EXISTING ROOF CONDITIONS**  
NO SCALE



REVISIONS:  
ADDENDUM #1 - 07/11/22