

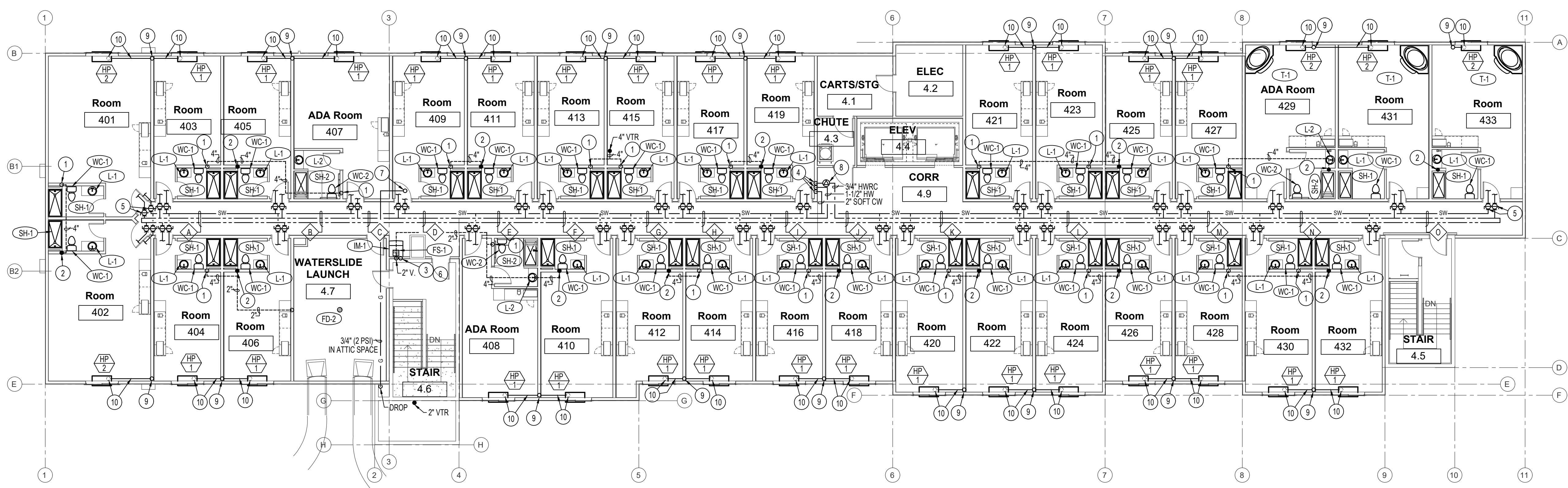
PLAN NOTES:

- 1 4" VENT STACK UP IN WALL FROM LEVEL 3 BELOW.
- 2 4" VENT STACK UP IN WALL FROM LEVEL 3 BELOW TO 4" VTR. SEE SHEET P1-5 FOR VTR LOCATIONS ON ROOF ABOVE.
- 3 1/2" (HARD) COLD WATER UP IN WALL FROM BELOW TO SERVE ICE MAKER ON THIS LEVEL.
- 4 DROP 2" (SOFT) COLD WATER, 1-1/2" HOT WATER, AND 3/4" HOT WATER RECIRC. PIPING DOWN IN WALL CAVITY. SEE SHEET P1-3 FOR CONTINUATION OF PIPING BELOW.
- 5 TYPICAL BALL TYPE SHUT-OFF VALVE ABOVE LAY-IN CEILING FOR 3/4" HW AND 3/4" SOFT COLD WATER SERVING EACH GUEST ROOM.
- 6 INSTALL BACKFLOW PREVENTOR ON 1/2" CW LINE AND RUN 3/8" LINE TO ICE MAKER COMPLETE WITH SHUT-OFF VALVE. SEE DETAIL ON SHEET P3-1 FOR BACKFLOW PREVENTOR INFORMATION.
- 7 RISE 3/4" (2 PSI) GAS LINE UP THRU ROOF TO SERVE ROOFTOP UNIT RT-1 ABOVE. SEE SHEET P1-5 FOR CONTINUATION OF PIPING.
- 8 INSTALL CIRCUIT SETTER ON 3/4" HWRC PIPING SET AT 3 GPM FLOW.
- 9 INSTALL 1" CONDENSATE DRAIN LINE STACK DOWN IN WALL FROM 4TH LEVEL FLOOR TO SERVE ALL LEVELS OF GUEST ROOM HEAT PUMPS. SEE SHEET P1-3 FOR CONTINUATION OF PIPING.
- 10 RUN 3/4" CONDENSATE DRAIN LINE FROM HEAT PUMP IN GUEST ROOM THRU FLOOR INTO JOIST SPACE BELOW AND CONNECT TO 1" VERTICAL CONDENSATE STACK IN WALL.

NOTE:
SEE LARGE SCALE TYP. GUEST ROOM PLUMBING PLANS ON SHEETS P2-0 FOR PIPING SERVING INDIVIDUAL GUEST ROOM TYPES.

PIPING SIZES THIS SHEET ONLY

MARK	SOFT CW	HOT	HOT	HWRC
A	1"	1-1/2"	1-1/2"	-
B	1-1/4"	1-1/2"	1-1/2"	-
C	1-1/4"	1-1/2"	1-1/2"	-
D	1-1/4"	1-1/2"	1-1/2"	-
E	1-1/4"	1-1/2"	1-1/2"	-
F	1-1/4"	1-1/2"	1-1/2"	-
G	1-1/2"	1-1/2"	1-1/4"	-
H	1-1/2"	1-1/2"	1-1/4"	-
I	1-1/2"	1-1/2"	1-1/4"	-
J	1-1/2"	-	1-1/4"	3/4"
K	1-1/2"	-	1-1/4"	3/4"
L	1-1/4"	3/4"	1-1/4"	-
M	1-1/4"	1"	1-1/4"	-
N	1"	1"	1-1/4"	-
O	3/4"	1"	1"	-



4TH LEVEL - PLUMBING FLOOR PLAN
SCALE: 3/32" = 1'-0"

DATE: 05.06.22

A NEW HOTEL:
HOTEL
TWIN FALLS, ID.
4TH LEVEL PLUMBING FLOOR PLAN

Laughlin Ricks Architecture
—architecture/planning—
134 3RD AVE. E. * Twin Falls, Idaho 83301
(208) 736-8050 Fax: (208) 733-0950

PROFESSIONAL ENGINEER
DAVID L. HANSEN
STATE OF IDAHO
No. 18184
May 06, 2022

Engineered Systems Associates

1355 EAST CENTER
POCATELLO, IDAHO 83201
PHONE: (208) 233-0501
FAX: (208) 233-0529
EMAIL: esa@engsystems.com
ESA JOB NUMBER: 22017

DATE: 5/06/2022

DR: [Signature] DLH
Checked

P1-4