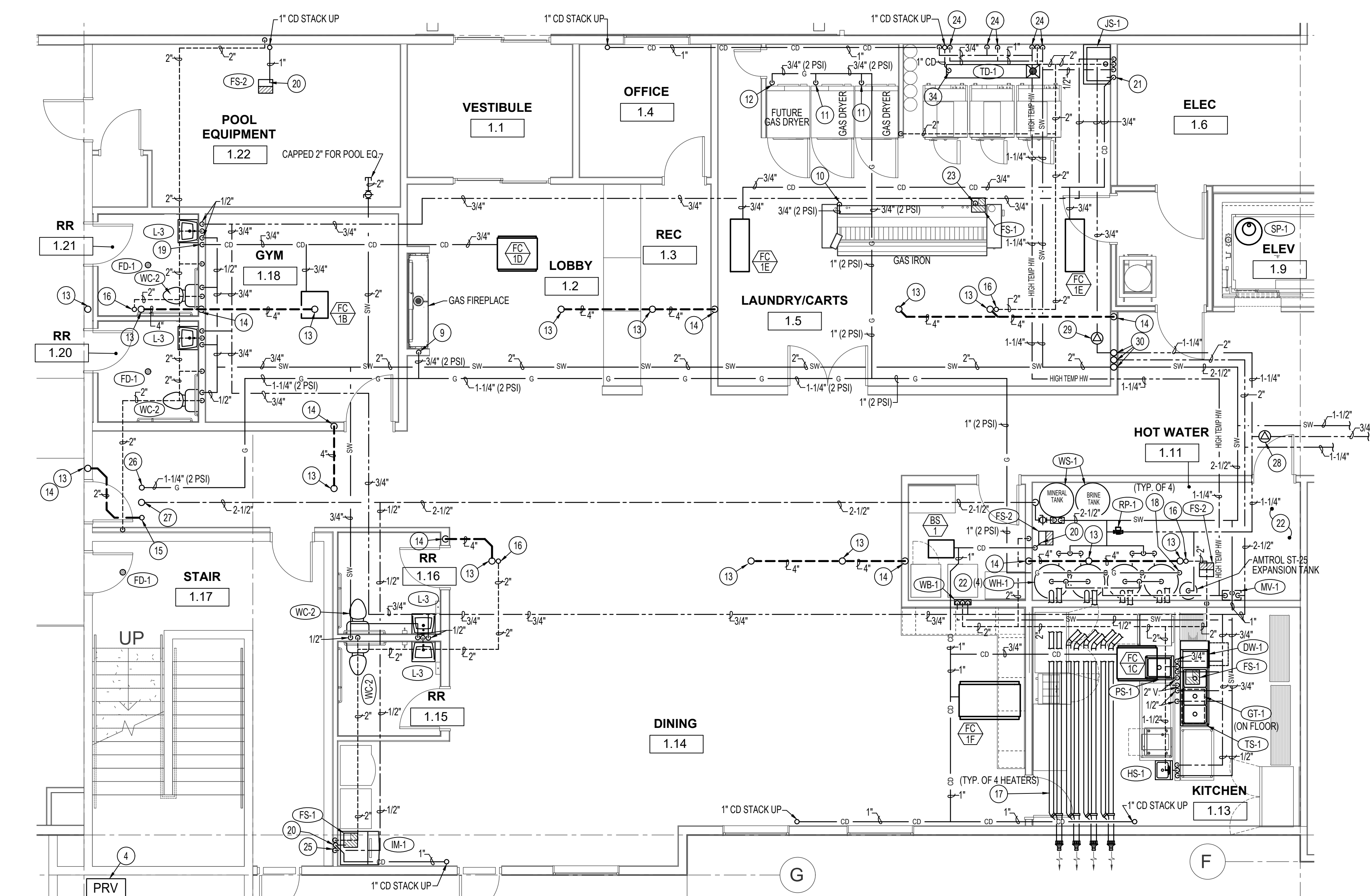


**MAIN LEVEL - PLUMBING FLOOR PLAN**

SCALE: 3/32" = 1'-0"



**ENLARGED PARTIAL MAIN LEVEL - PLUMBING FLOOR PLAN**

SCALE: 3/16" = 1'-0"



**PIPING SIZES THIS SHEET ONLY**

MARK	SOFT CW	HOT	HOT	HWRC
A	1-1/2"	--	1-1/4"	3/4"
B	1-1/4"	3/4"	1-1/4"	--
C	1-1/4"	1"	1-1/4"	--
D	1"	1"	1-1/4"	--
E	3/4"	1"	1"	--

**PLAN NOTES:**

- 32 1" CONDENSATE STACK DOWN IN WALL FROM ABOVE. RUN 1" CONDENSATE LINE THRU EXTERIOR WALL 6" A.F.F. AND TERMINATE WITH DOWNTURNED 90° ELBOW. PAINT EXPOSED DRAIN LINE TO MATCH EXTERIOR OF BUILDING.
- 33 RUN 3/4" CONDENSATE DRAIN FROM HEAT PUMP THRU WALL AS LOW AS POSSIBLE AND TERMINATE WITH 90° DOWNTURNED ELBOW. PAINT EXPOSED DRAIN LINE TO MATCH EXTERIOR OF BUILDING.
- 34 DROP 1" CONDENSATE DRAIN LINE DOWN EXPOSED ON WALL AND RUN OVER TO LAUNDRY TRENCH DRAIN AND TERMINATE WITH AIRGAP.

**PLAN NOTES:**

- 1 4" WASTE STACK UP IN WALL ABOVE TO SERVE LEVELS ABOVE.
- 2 4" VENT STACK UP IN WALL ABOVE TO SERVE LEVELS ABOVE.
- 3 6" FRISE RISER ASSEMBLY. SEE DETAIL ON SHEET P3-0.
- 4 2-1/2" DOMESTIC CW PRESSURE REDUCING VALVE ASSEMBLY. SEE DETAIL ON SHEET P3-0.
- 5 RISE 2-1/2" DOMESTIC CW MAIN UP EXPOSED ON WALL TO LEVEL 3 ABOVE. SEE SHEET P1-2 FOR CONTINUATION OF PIPING.
- 6 GAS METER BY LOCAL GAS COMPANY SIZED FOR 1,960,000 BTU AT 2 PSI DELIVERY PRESSURE.
- 7 TYPICAL BALL TYPE SHUT-OFF VALVE ABOVE LAY-IN CEILING FOR 3/4" HW & 3/4" SOFT COLD WATER SERVING EACH GUEST ROOM.
- 8 RISE 1-1/4" (2 PSI) GAS LINE UP EXPOSED ON WALL OF RISER ROOM. SEE SHEET P1-2 FOR CONTINUATION OF PIPING.
- 9 DROP 3/4" (2 PSI) GAS LINE DOWN IN WALL TO SERVE GAS FIREPLACE. INSTALL 2 PSI TO OZ. REGULATOR SIZED FOR 58,000 BTU IN 3/4" GAS LINE & VENT REGULATOR TO THE EXTERIOR. CONNECT 3/4" (OZ.) GAS LINE TO FIREPLACE COMPLETE WITH SHUT-OFF VALVE, DIRT LEG, AND FLEXIBLE CONNECTION. SEE DETAIL ON SHEET P3-0.
- 10 DROP 3/4" (2 PSI) GAS LINE DOWN EXPOSED THRU CEILING TO SERVE GAS IRON. INSTALL 2 PSI TO OZ. REGULATOR SIZED FOR 257,000 BTU IN 3/4" GAS LINE AND VENT REGULATOR TO THE EXTERIOR. CONNECT 3/4" (OZ.) GAS LINE TO GAS IRON COMPLETE WITH SHUT-OFF VALVE, DIRT LEG, AND FLEXIBLE CONNECTION. SEE DETAIL ON SHEET P3-0.
- 11 DROP 3/4" (2 PSI) GAS LINE DOWN EXPOSED THRU CEILING TO SERVE GAS CLOTHES DRYER. INSTALL 2 PSI TO OZ. REGULATOR SIZED FOR 165,000 BTU IN 3/4" GAS LINE AND VENT REGULATOR TO THE EXTERIOR. CONNECT 3/4" (OZ.) GAS LINE TO DRYER COMPLETE WITH SHUT-OFF VALVE, DIRT LEG, AND FLEXIBLE CONNECTION. SEE DETAIL ON SHEET P3-0.
- 12 DROP 3/4" (2 PSI) GAS LINE DOWN EXPOSED THRU CEILING TO SERVE FUTURE GAS CLOTHES DRYER. INSTALL 2 PSI TO OZ. REGULATOR SIZED FOR 165,000 BTU IN 3/4" GAS LINE AND VENT REGULATOR TO THE EXTERIOR. CAP PIPING BELOW REGULATOR FOR FUTURE CONNECTION.
- 13 4" WASTE UP IN WALL ABOVE. SEE SHEET P1-2 FOR CONTINUATION OF PIPING.
- 14 4" WASTE LINE DOWN IN WALL. SEE SHEET P1-0 FOR CONTINUATION OF PIPING UNDERSLAB.
- 15 2" WASTE LINE UP IN CHASE TO SERVE FLOOR SINKS ON LEVELS 2,3, AND 4 ABOVE. SEE SHEET P1-2 FOR CONTINUATION OF PIPING.
- 16 RISE 2" VENT UP IN WALL AND CONNECT TO 4" VENT STACK ON LEVEL 2 ABOVE.
- 17 INSTALL (2) 3" Ø FLUES FROM EACH WATER HEATER AS HIGH AS POSSIBLE AT CEILING OF MECH. ROOM AND RUN TO HORIZONTAL VENT TERMINATION ASSEMBLY ON EXTERIOR WALL. SEAL WALL PENETRATION WEATHERTIGHT.
- 18 INSTALL 2 PSI TO OZ. REGULATOR ON 3/4" GAS LINE SERVING EACH WATER HEATER. SIZE REGULATOR FOR BTU LOAD OF ACTUAL WATER HEATER SUPPLIED. VENT REGULATOR TO THE EXTERIOR. INSTALL 3/4" (OZ.) GAS LINE FROM REGULATOR TO HEATER COMPLETE WITH SHUT-OFF VALVE, FLEXIBLE CONNECTION AND DIRT LEG. SEE DETAIL ON SHEET P3-0.
- 19 RUN 3/4" CONDENSATE DRAIN LINE DOWN IN WALL AND CONNECT TO SINK SIDE OF P-TRAP USING DISHWASHER CONNECTION ON LAVATORY.
- 20 RUN 1" CONDENSATE DRAIN LINE DOWN EXPOSED ON WALL OR IN WALL & RUN TO FLOOR SINK. TERMINATE IN FLOOR SINK WITH AIRGAP.
- 21 RUN 3/4" CONDENSATE DRAIN LINE DOWN EXPOSED ON WALL AND RUN TO FLOOR MOUNTED JANITOR SINK AND TERMINATE IN SINK WITH AIRGAP.
- 22 SEE SHEET P3-1 FOR WATER HEATER PIPING DIAGRAM SHOWING INDIVIDUAL PIE SIZES IN THIS AREA.
- 23 RUN 1" CONDENSATE DRAIN FROM GAS FIRED IRON DOWN EXPOSED TO FLOOR SINK AND TERMINATE IN SINK WITH AIRGAP.
- 24 DROP 3/4" HIGH TEMP. HW PIPING AND 3/4" SOFT CW LINES DOWN EXPOSED ON WALL TO 36" A.F.F. INSTALL BALL TYPE SHUT-OFF VALVES WITH THREADED HOSE CONNECTIONS FOR CLOTHES WASHING MACHINE HOOK-UPS. VERIFY SIZE, AMOUNTS AND TYPE WITH WASHING MACHINE MANUFACTURER.
- 25 DROP 1/2" HARD COLD WATER LINE DOWN IN WALL TO SERVE ICE MAKER. INSTALL BACKFLOW PREVENTOR ON 1/2" CW LINE AND RUN 3/8" LINE TO ICE MAKER COMPLETE WITH SHUT-OFF VALVE. SEE DETAIL ON SHEET P3-1 FOR BACKFLOW PREVENTOR INFORMATION.
- 26 1-1/4" (2 PSI) GAS LINE UP IN CHASE TO LEVEL 3 ABOVE. SEE SHEET P1-2 FOR CONTINUATION OF PIPING ABOVE.
- 27 2-1/2" HARD DOMESTIC COLD WATER LINE UP IN CHASE TO LEVEL 3 ABOVE. SEE SHEET P1-2 FOR CONTINUATION OF PIPING ABOVE.
- 28 INSTALL BALANCING VALVE ON 3/4" HWRC PIPING SET AT 2 GPM FLOW.
- 29 INSTALL BALANCING VALVE ON 3/4" HWRC PIPING SET AT 1 GPM FLOW.
- 30 RISE 2-1/2" (SOFT) COLD WATER, 2" HOT WATER, AND 1-1/4" HOT WATER RECIRC. PIPING UP IN WALL CAVITY. SEE SHEET P1-2 FOR CONTINUATION OF PIPING ABOVE.
- 31 RUN 1" CONDENSATE DRAIN SERVING HEAT PUMPS ON LEVELS 3 AND 4 DOWN EXPOSED ON WALL OF RISER ROOM AND TERMINATE IN FLOOR SINK WITH AIR GAP.

**Engineered Systems Associates**

1355 EAST CENTER  
POCATELLO, IDAHO 83201

PHONE: (208) 233-0501  
FAX: (208) 233-0529  
EMAIL: esa@engsys.com

ESR JOB NUMBER: 22017

DATE: 5/06/2022

DR: [Signature]  
DW: [Signature]

05.06.22

DATE

A NEW HOTEL:  
HOTEL  
TWIN FALLS, ID.

Laughlin Ricks Architecture  
architecture/planning  
134 3RD AVE. E. \* Twin Falls, Idaho 83301  
(208) 736-8050 Fax: (208) 733-0950

**P1-1**