

- PLAN NOTES:**
- SEE CIVIL SITE PLAN FOR CONTINUATION OF 8" SANITARY SEWER MAIN.
  - SEE CIVIL SITE PLAN FOR CONTINUATION OF 2-1/2" DOMESTIC CW MAIN.
  - SEE CIVIL SITE PLAN FOR CONTINUATION OF 6" FIRE LINE.
  - RISE 2-1/2" DOMESTIC CW MAIN LINE UP THRU SLAB TO PRESSURE REDUCING VALVE ASSEMBLY ABOVE. SEE SHEET P1-1 FOR LOCATION OF PRESSURE REDUCING VALVE ASSEMBLY IN RISER ROOM.
  - RISE 6" FIRE LINE UP THRU SLAB TO FIRE RISER ASSEMBLY ABOVE. SEE SHEET P1-1 FOR LOCATION OF FIRE RISER IN RISER ROOM.
  - 4" WASTE STACK UP IN WALL ABOVE TO SERVE LEVELS OF HOTEL ABOVE.
  - 4" VENT STACK UP IN WALL ABOVE TO SERVE LEVELS OF HOTEL ABOVE.

05.06.22

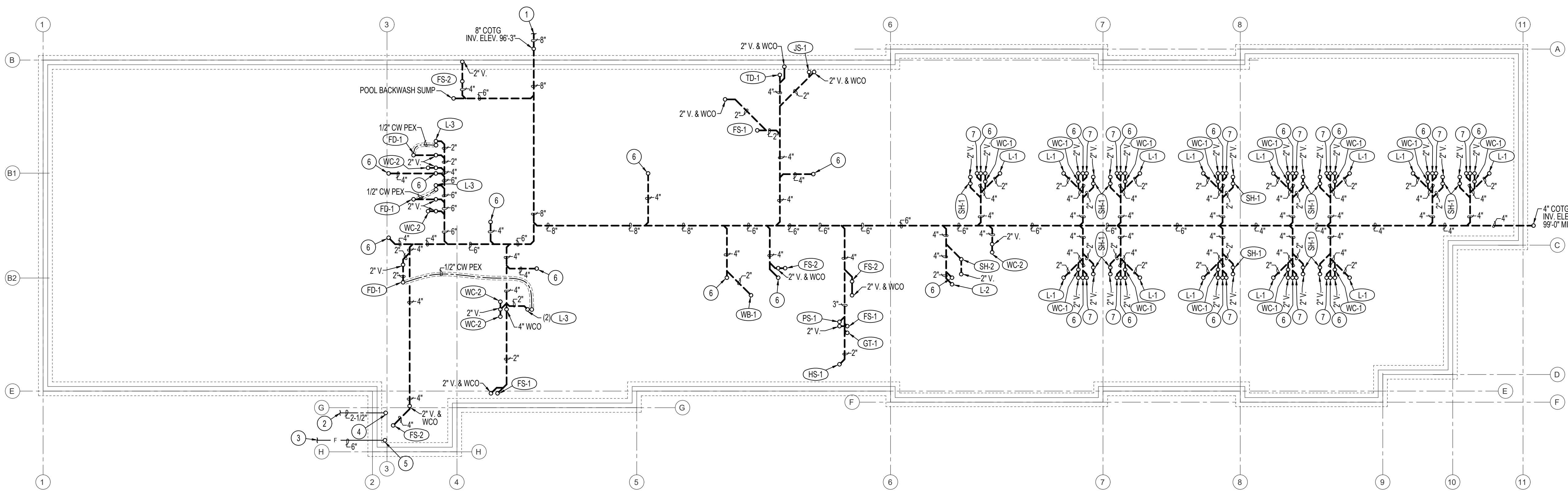
DATE

A NEW HOTEL:  
HOTEL  
TWIN FALLS, ID.  
FOUNDATION PLUMBING PLAN

Laughlin Ricks Architecture  
architecture/planning  
134 3RD AVE. E. \* Twin Falls, Idaho 83301  
(208) 736-8050 Fax: (208) 733-0950

DATE: 5/06/2022  
DR: [Signature] DLH  
Checked

**P1-0**



**FOUNDATION - PLUMBING FLOOR PLAN**  
SCALE: 3/32" = 1'-0"  
North

PLUMBING LEGEND	
SYMBOL	DESCRIPTION
V	VENT
VTR	VENT THRU ROOF
CO	CLEANOUT
WCO	WALL CLEANOUT
COTG	CLEANOUT TO GRADE
—	PIPE DROP
—	PIPE RISE
⊘	BALL TYPE ISOLATION VALVE
---	SOIL OR WASTE PIPING
---	VENT LINE PIPING
---	DOMESTIC COLD WATER PIPING
---	DOMESTIC HOT WATER PIPING
---	HOT WATER RECIRC. PIPING
G	GAS PIPING

**Engineered Systems Associates**  
1355 EAST CENTER  
POCATELLO, IDAHO 83201  
PHONE: (208) 233-0501  
FAX: (208) 233-0529  
EMAIL: esa@engsystems.com  
ESA JOB NUMBER: 22017

