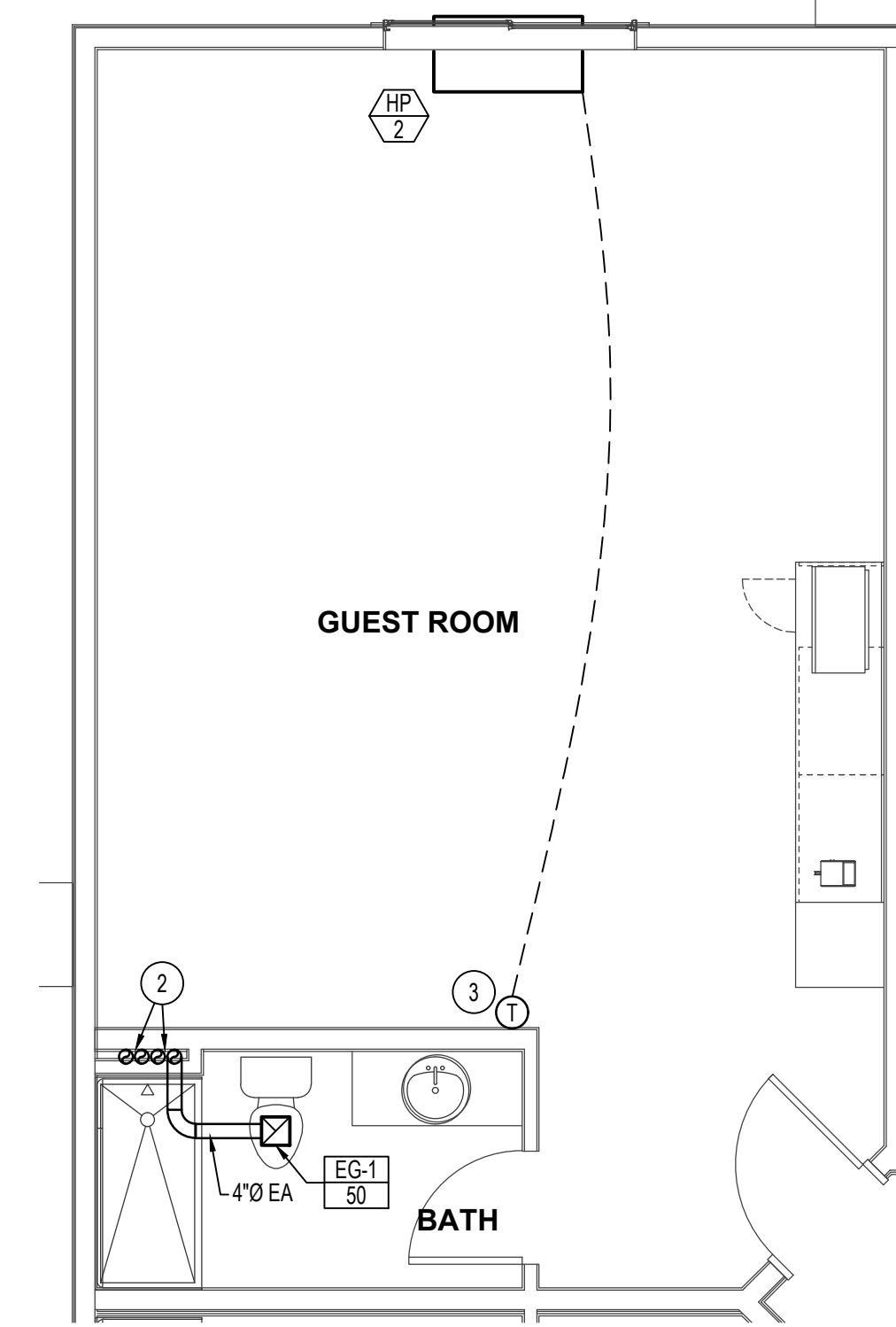


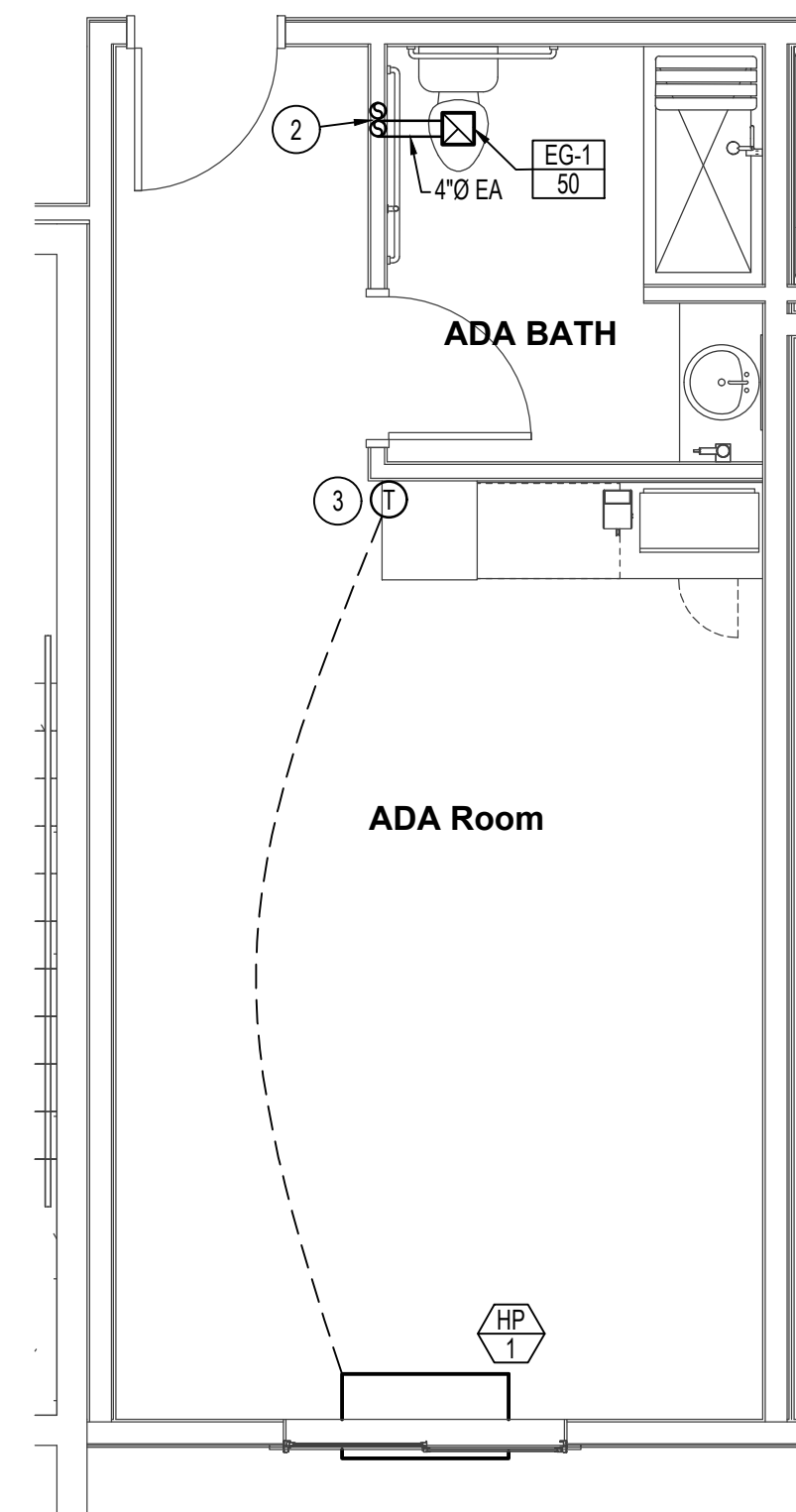
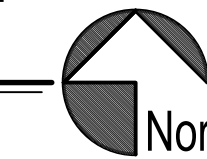
**LEVEL 4 GUEST ROOMS 429, 431, 433
LARGE SCALE MECHANICAL FLOOR PLANS**

SCALE: 1/4" = 1'-0"



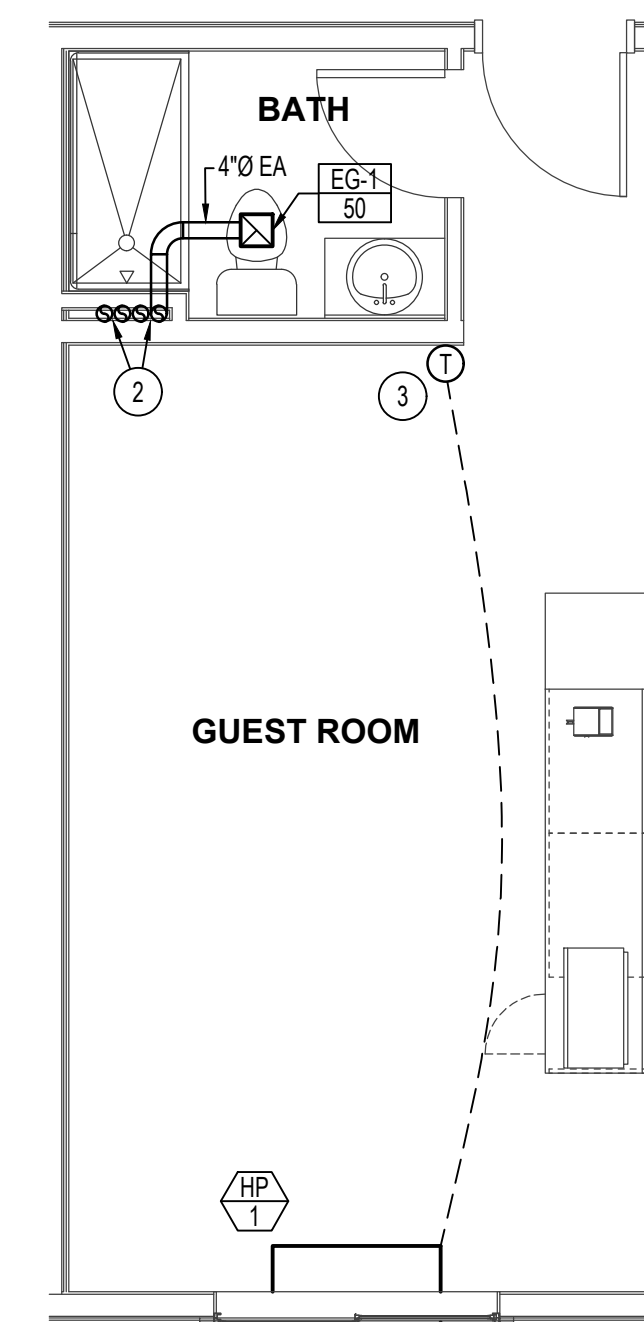
**LARGE SCALE MECHANICAL FLOOR PLAN
TYP. OF ROOMS 301, 302, 401, 402**

SCALE: 1/4" = 1'-0"



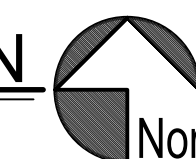
**LARGE SCALE MECHANICAL FLOOR PLAN
TYP. OF ADA ROOMS 202, 307, 308, 407, 408**

SCALE: 1/4" = 1'-0"



**TYPICAL GUEST ROOM
LARGE SCALE MECHANICAL FLOOR PLAN**

SCALE: 1/4" = 1'-0"



PLAN NOTES:

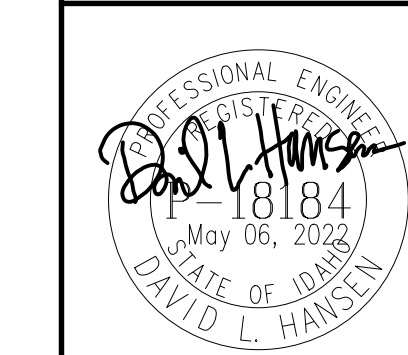
- 1 SEE SHEET M1-4 FOR CONTINUATION OF EXHAUST DUCTWORK RUNNING TO ROOFTOP EXHAUST FANS.
- 2 RISE 4"Ø EXHAUST DUCT UP IN CHASE TO ROOFTOP EXHAUST FAN. SEE SHEET M1-4 FOR CONTINUATION AND FINAL NUMBER OF EXHAUST DUCTS SERVING EACH ROOFTOP EXHAUST FANS.
- 3 INSTALL THERMOSTAT PROVIDED WITH HEAT PUMP PACKAGE ON WALL AT 60" A.F.F AND INTERLOCK WITH HEAT PUMP UNIT.
- 4 DROP 4"Ø EXHAUST DUCTS DOWN IN WALL CAVITY TO SERVE LEVELS BELOW. SEE MECHANICAL FLOOR PLAN ON SHEET M1-3 FOR CONTINUATION OF DUCTWORK.

05.06.22

DATE

A NEW HOTEL:
HOTEL
TWIN FALLS, ID.
LARGE SCALE MECHANICAL PLANS

Laughlin Ricks Architecture
—architecture/planning—
134 3RD AVE. E. * Twin Falls, Idaho 83301
(208) 736-8050 Fax: (208) 733-0950



Engineered Systems Associates
1355 EAST CENTER
POCATELLO, IDAHO 83201
PHONE: (208) 233-0501
FAX: (208) 233-0529
EMAIL: esa@engsystems.com
ESA JOB NUMBER: 22017

DATE: 5/06/2022
DR: [Signature] DLH
DWG: [Signature] Checked

M2-0