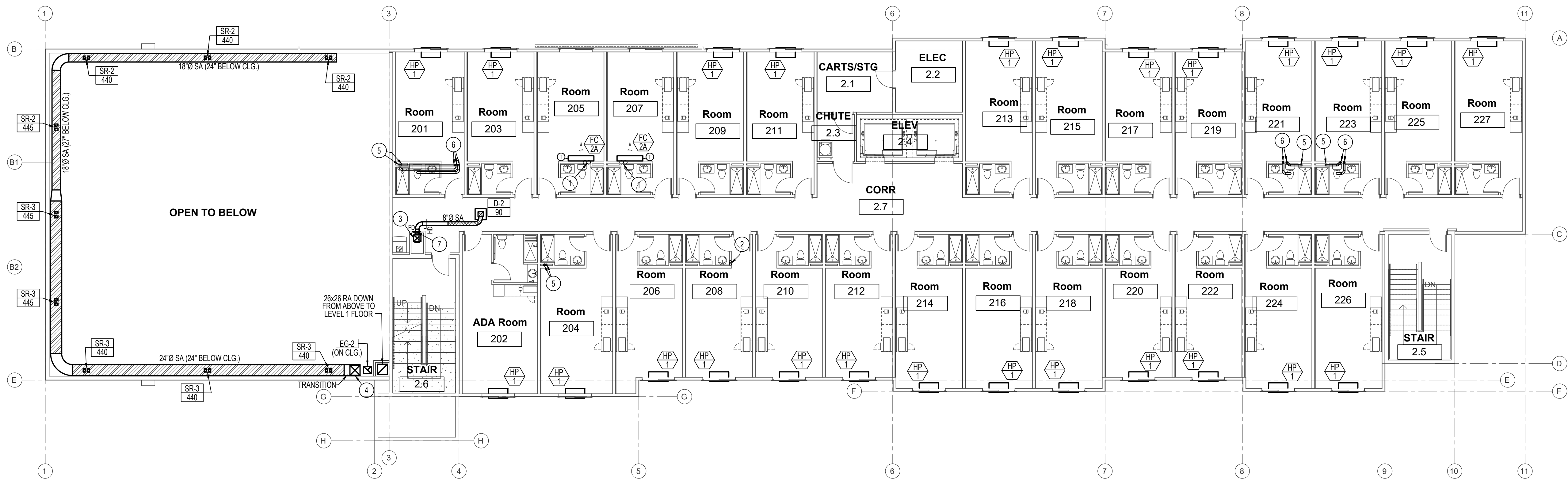


SPECIAL NOTE:
 ALL SUPPLY, RETURN & EXHAUST AIR DUCTWORK, DIFFUSERS AND GRILLES SERVING DEHUMIDIFICATION AIR HANDLING UNIT LOCATED IN POOL AREA TO HAVE UN-LINED ALUMINUM DUCTWORK ONLY. NO STEEL DUCT WITH ACOUSTICAL LINER ALLOWED.



2ND LEVEL - MECHANICAL FLOOR PLAN
 SCALE: 3/32" = 1'-0"
 North

NOTE:
 SEE LARGE SCALE TYP. GUEST ROOM MECH. PLANS ON SHEETS M2-0 FOR DUCTWORK & EQUIPMENT SERVING INDIVIDUAL GUEST ROOM TYPES.

PLAN NOTES:

- 1 REFRIGERANT PIPING UP IN WALL TO ROOFTOP FAN COIL UNIT FC-2B FROM FAN COIL UNIT FC-2A.
- 2 REFRIGERANT PIPING UP IN WALL FROM LEVEL 1 TO OUTDOOR UNIT OU-1 LOCATED ON ROOF ABOVE. SEE SHEET M1-3 FOR CONTINUATION OF PIPING ABOVE.
- 3 16x14 SUPPLY DOWN IN CHASE FROM ABOVE. TRANSITION DUCT AT FLOOR LEVEL TO 18x10 SUPPLY AND CONTINUE DOWN TO LEVEL 1 CEILING SPACE. SEE SHEET M1-1 FOR CONTINUATION OF DUCTWORK.
- 4 RISE 22x22 SUPPLY AIR DUCT UP THRU CEILING AND FLOOR ASSEMBLY TO MECHANICAL ROOM 3.7 ABOVE. SEE SHEET M1-3 FOR CONTINUATION OF DUCT INSIDE MECH. ROOM 3.7.
- 5 4"Ø EXHAUST DUCT UP FROM LEVEL 1 BELOW. SEE SHEET M1-1 FOR CONTINUATION OF DUCTWORK BELOW.
- 6 OFFSET 4"Ø EXHAUST DUCT(S) AS SHOWN IN CEILING OF THIS LEVEL AND RISE UP IN WALL/ CHASE ABOVE TO ROOF TOP EXHAUST FAN.
- 7 INSTALL FIRE DAMPER IN 8"Ø DUCT AT CHASE PENETRATION. WITH 6x6 ACCESS PANEL LOCATED ABOVE LAY-IN CEILING.

DATE: 05.06.22

DATE: _____

A NEW HOTEL:
 HOTEL
 TWIN FALLS, ID.
 2ND LEVEL MECHANICAL FLOOR PLAN

Laughlin Ricks Architecture
 architecture/planning
 134 3RD AVE. E. * Twin Falls, Idaho 83301
 (208) 736-8050 Fax: (208) 733-0950

Engineered Systems Associates
 1355 EAST CENTER
 POCAHELLO, IDAHO 83201
 PHONE: (208) 233-0501
 FAX: (208) 233-0529
 EMAIL: esa@engsystems.com
 ESA JOB NUMBER: 22017

DATE: 5/06/2022
 SR: _____
 Drawn: _____
 Checked: _____
M1-2

