

PLAN NOTES:

- 1 EXISTING GAS FIRED WATER HEATER TO REMAIN. PROTECT HEATER AND PIPING DURING CONSTRUCTION.
- 2 CONNECT NEW 1" COLD WATER LINE TO EXISTING 2" COLD WATER LINE AND NEW 3/4" HOT WATER LINE TO EXISTING 3/4" HOT WATER LINE IN UPPER LEVEL MECHANICAL WALKWAY. PROVIDE SHUT-OFF VALVE IN NEW LINE AND LABEL AS STAKE SUITE SHUT-OFF VALVE.
- 3 RUN NEW WATER PIPING AS SHOWN. PIPING TO BE IN WARM ATTIC (CEILING) SPACES AND KEPT WITHIN BUILDING ENVELOPE. COORDINATE WITH EXISTING BUILDING STRUCTURE, EXISTING EQUIPMENT, PIPING AND DUCTWORK.
- 4 CONNECT NEW 1-1/4" GAS LINE TO EXISTING 3" GAS LINE IN UPPER LEVEL MECHANICAL WALKWAY. PROVIDE SHUT-OFF VALVE IN NEW LINE. LABEL AS 'STAKE SUITE SHUT-OFF VALVE'.
- 5 RUN NEW 1-1/4" GAS LINE THRU EXISTING AND/OR NEW BUILDING STRUCTURE AS SHOWN. COORDINATE NEW PIPING WITH STRUCTURE, EXISTING EQUIPMENT, PIPING AND DUCTWORK.
- 6 NEW GAS FURNACE ON MEZZANINE WALKWAY PROVIDED AND INSTALLED BY MECHANICAL CONTRACTOR. PLUMBING CONTRACTOR TO ROUGH-IN AND CONNECT 3/4" GAS LINE WITH SHUT-OFF VALVE AND FLEXIBLE HOSE CONNECTION. REFER TO GAS LINE CONNECTION DETAIL D/P201 FOR TYPICAL GAS LINE CONNECTION.
- 7 RUN DRAIN LINES FROM FURNACES AND DRAIN PAN TO CONDENSATE RECEPTOR AS SHOWN. REFER TO DETAIL G/P201 FOR RECEPTOR INSTALLATION.
- 8 PROVIDE TRAP PRIMER VALVE AS SPECIFIED. MOUNT IN LOCKING METAL BOX BELOW LAVATORY AND RUN 1/2" LINE BELOW FLOOR TO FLOOR DRAIN. REFER TO DETAIL A/P201 FOR TYPICAL TRAP PRIMER INSTALLATION AND PIPING CONNECTIONS.
- 9 PROVIDE FONT VALVE BOX WITH MIXING VALVE. REFER TO DETAIL E/P201 FOR TYPICAL PIPING CONNECTIONS.
- 10 EXISTING CONDENSATE DRYWELL AND PIPING TO REMAIN. COORDINATE WITH NEW CONSTRUCTION AND WASTE LINES AND PROTECT DURING PROJECT.
- 11 EXISTING WASTE PIPING TO REMAIN. FIELD VERIFY EXACT LOCATION, SIZE AND ELEVATION. NEW PIPING TO MATCH EXISTING ELEVATION.
- 12 CONNECT 3/4" HOT WATER LINE TO EXISTING HOT WATER HEATER AND RUN TO NEW FONT AND FIXTURES AS SHOWN. PROVIDE RECIRCULATION PUMP AS SPECIFIED AND CONNECT TO COLD WATER LINE FEEDING WATER HEATER. REFER TO PIPING DIAGRAM F/P201 FOR TYPICAL PIPING CONNECTIONS.
- 13 EXISTING 2" COLD WATER AND 3/4" HOT WATER PIPING ON MEZZANINE WALKWAY AND ABOVE CEILINGS TO REMAIN. FIELD VERIFY EXACT LOCATIONS AND SIZES AND PROTECT DURING CONSTRUCTION.
- 14 EXISTING EQUIPMENT ON MEZZANINE WALKWAY TO REMAIN. PROTECT EQUIPMENT AND PIPING DURING CONSTRUCTION. COORDINATE NEW PIPING WITH EXISTING BUILDING STRUCTURE, EQUIPMENT AND DUCTWORK.
- 15 PLUMBING CONTRACTOR TO FIELD VERIFY EXISTING CONDITIONS IN THIS AREA. (SEE PHOTO H/P201) RE-ROUTE, RELOCATE, AND/OR REMOVE ANY EXISTING WASTE, WATER, VENTS, VALVES, AND/OR DRAIN LINES AS REQUIRED IN THIS AREA TO ALLOW FOR NEW WALKWAY ACCESS DOOR. REFER TO ARCHITECTURAL DRAWINGS FOR EXACT LOCATION OF NEW ACCESS DOOR.

Architect / Engineer:
GENE C. ULMER ARCHITECT
 1506 S. SECRETARIAT WAY
 NAMPA, ID 83686
 (208) 899-0874 * ulmergc@gmail.com

Date: December 10, 2021

Stamp:

Post Falls ID McGuire
 Stake Suite Addition
 Coeur d' Alene ID Stake
 1670 North McGuire road
 Post Falls, Idaho 83854

Project for:
THE CHURCH OF JESUS CHRIST OF LATTER-DAY SAINTS

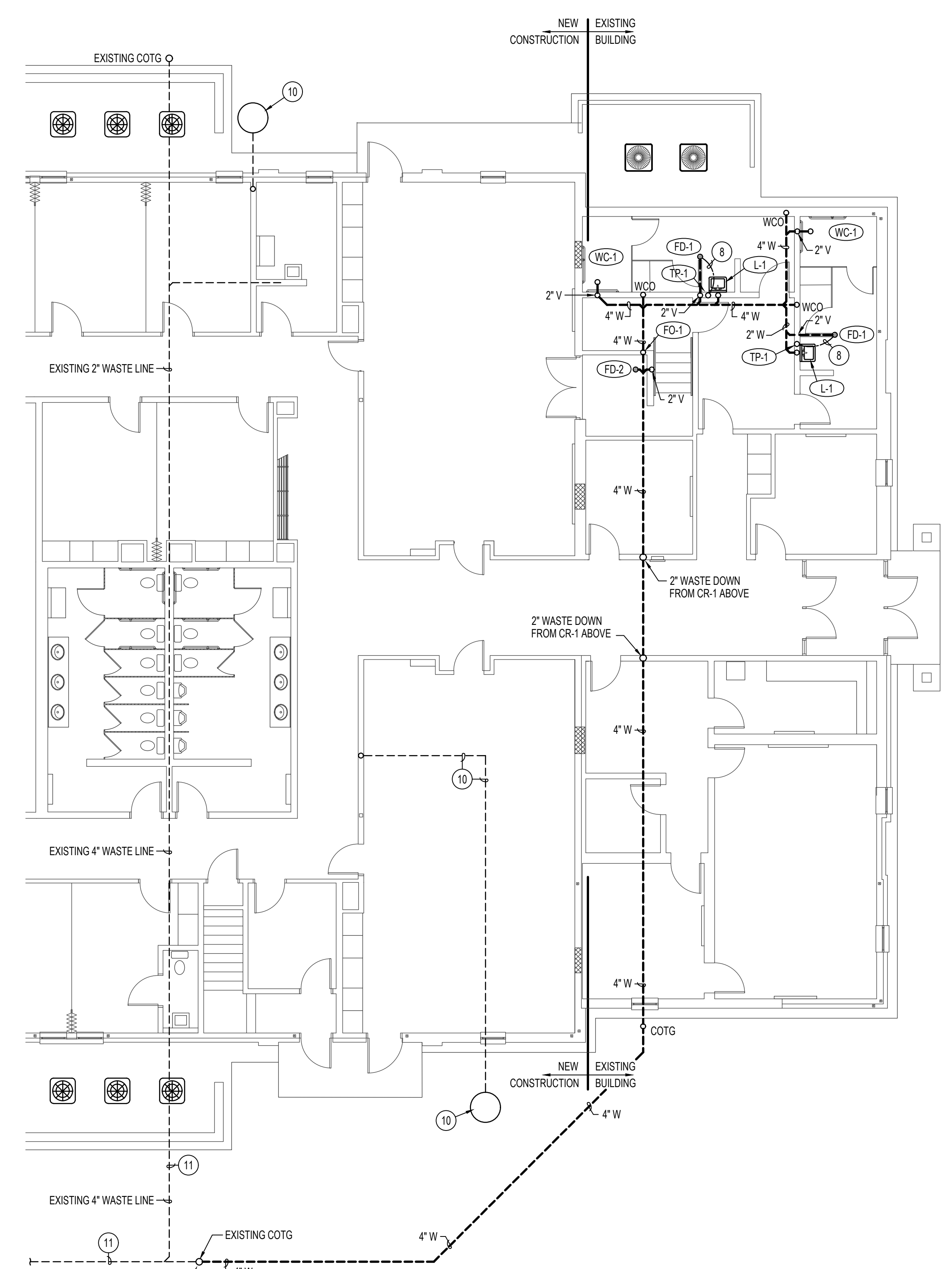
Mark	Date (m.d.y)	Description

Project Number:
22112
 Plan Series:
HER-98
 Property Number:
581027220030101

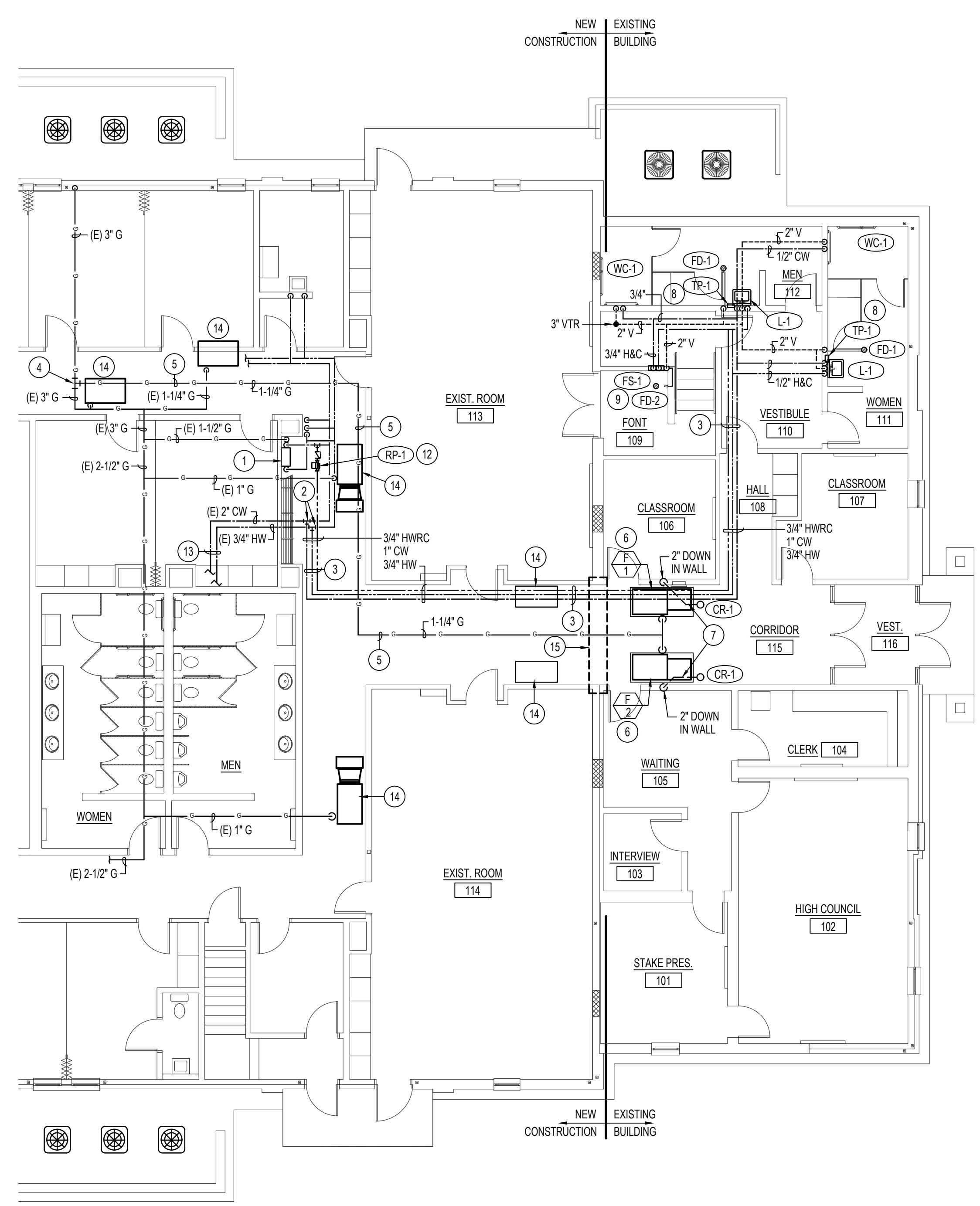
Sheet Title:
PLUMBING FLOOR PLAN

Sheet:
P101

Engineered Systems Associates
 1355 EAST CENTER
 POCATELLO, IDAHO 83201
 PHONE: (208) 233-0501
 FAX: (208) 233-0529
 EMAIL: esa@engsystems.com
 ESA JOB NUMBER: 21064



UNDER FLOOR PIPING PLAN
 SCALE: 1/8" = 1'-0"
 North



PLUMBING FLOOR PLAN
 SCALE: 1/8" = 1'-0"
 North

SYM.	DESCRIPTION	PIPE SIZE					REMARKS
		TRAP	WASTE	VENT	C.W.	H.W.	
CR-1	CONDENSATE RECEPTOR	1-1/2"	1-1/2"	2"	-	-	SEE DETAIL G/P201 - FIELD ASSEMBLED.
FD-1	FLOOR DRAIN	2"	2"	2"	-	-	WITH DEEP SEAL P-TRAP AND TRAP PRIMER CONNECTION
FD-2	FONT DRAIN	2"	2"	2"	-	-	SEE SPECIFICATIONS
FO-1	FONT OVERFLOW	2"	2"	2"	-	-	SEE SPECIFICATIONS
FS-1	FONT SUPPLY	-	-	-	3/4"	3/4"	SUPPLY OUTLET 3/4"
L-1	LAVATORY	1-1/2"	1-1/2"	1-1/2"	1/2"	1/2"	SELF SUPPORTING 20"x18" (ADA APPROVED). MOUNT AT HEIGHT SHOWN ON ARCH. DRAWINGS
RP-1	HOT WATER RECIRC PUMP	-	-	-	-	3/4"	CIRCULATING PUMP: 1/6 HP, 3 SPEED, 1.8 AMPS, 3 GPM @ 28' HEAD.
TP-1	TRAP PRIMER	-	-	-	1/2"	-	PRECISION PRODUCTS MODEL PTS-B. RUN 1/2" PEX PIPING TO FLOOR DRAIN
WC-1	WATER CLOSET	INT.	4"	2"	1/2"	-	FLUSH TANK, 18" RIM HEIGHT (ADA APPROVED)

(A) SEE SPECIFICATIONS FOR APPROVED MANUFACTURERS AND MODEL NUMBERS.