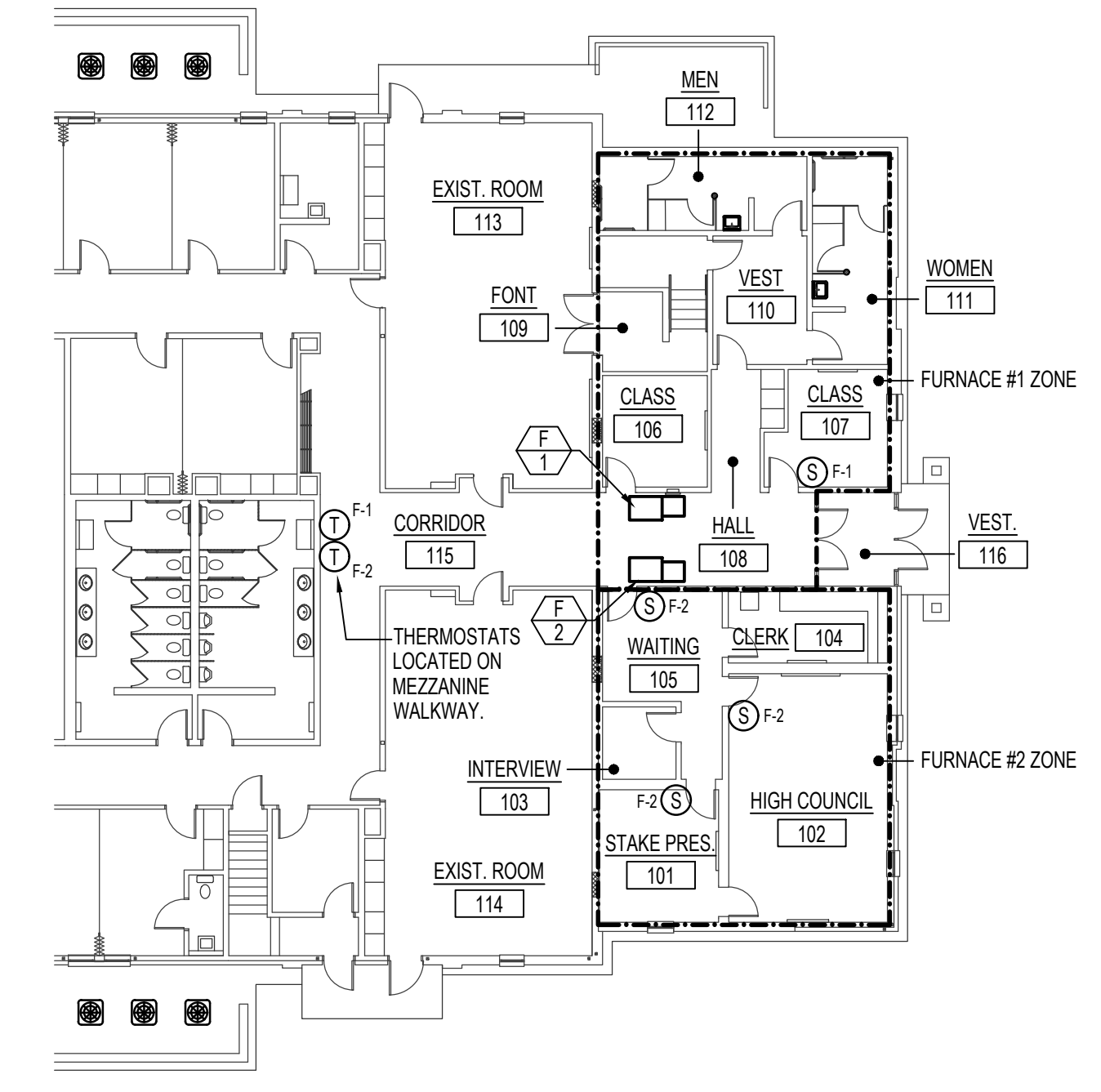


**SINGLE FURNACE WIRING DIAGRAM**  
SCALE: NONE

- NOTES:
1. THERMOSTAT CABLE- 4, 8 OR 12 CONDUCTOR- 18 AWG SOLID COPPER WIRE INSULATED WITH HIGH DENSITY POLYETHYLENE. CONDUCTORS PARALLEL ENCLOSED IN BROWN PVC-JACKET. (NO 22 AWG CABLE ALLOWED).
  2. IF CONDENSING UNITS HAVE THEIR OWN POWER SUPPLY IT MAY BE NECESSARY TO ADD ADDITIONAL RELAYS IN CONDENSING UNIT TO PROPERLY INTERFACE CONTROLS.
  3. USE WIRE NUT CONNECTORS FOR SPLICING CONDUCTORS IN SPECIFIED LOCATIONS AND TYTON TYPE CRIMP CONNECTORS FOR TERMINAL CONNECTIONS. NO TERMINAL CONNECTORS REQUIRED AT THERMOSTAT OR SENSOR.
  4. DO NOT RUN ANY OTHER WIRING IN THIS CONDUIT EXCEPT THERMOSTAT CABLE.
  5. VERIFY THAT FURNACE FAN SPEED CONTROL WIRING IS SET TO MATCH SCHEDULE SHEET AND THAT FAN OPERATES AT COOLING SPEED ONLY.
  6. DO NOT SPLICE WIRE IN RUNS FROM SENSOR TO THERMOSTAT, THERMOSTAT TO FURNACE, AND THERMOSTAT TO DISCHARGE AIR SENSOR.
  7. PROVIDE CHASE NIPPLE W/PLASTIC BUSHING WHEN ATTACHING J-BOX TO EQUIPMENT.
  8. PROVIDE CABLE CLAMP SO THAT CABLES CANNOT BE PULLED OUT OF J-BOX.

CONTROL EQUIPMENT		
MARK	DESCRIPTION	CAT. NO. 1
T-1	THERMOSTAT	T7350H1009
S-1	REMOTE TEMPERATURE SENSOR SELECTABLE 10K OHM OR 20K OHM	T7771A1005
S-2	REMOTE TEMPERATURE SENSOR 20K OHM	T7770A2004
DS-1	DISCHARGE AIR SENSOR	C7041B2005
DM-1	DAMPER MOTOR TWO POSITION	MS8105A1008
RIB	RELAY	FUNCTIONAL DEVICES RIBU1C
X-2	TRANSFORMER 120V/24V 50VA	A1150F1002

- ① ALL CATALOG NUMBERS SHOWN ARE HONEYWELL UNLESS NOTED OTHERWISE.  
 ② SEE SPECIFICATION.  
 ③ PROVIDE ENCLOSURE  
 ④ TO BE PURCHASED FROM AN APPROVED PANEL BUILDER SEE SPECIFICATION.



**AUTOMATIC TEMPERATURE CONTROL FLOOR PLAN**  
SCALE: 1/16" = 1'-0"

**Engineered Systems Associates**  
 1355 EAST CENTER  
 POCATELLO, IDAHO 83201  
 PHONE: (208) 233-0501  
 FAX: (208) 233-0529  
 EMAIL: esa@engsystems.com  
 ESA JOB NUMBER: 21064

Architect / Engineer:  
**GENE C. ULMER ARCHITECT**  
 1506 S. SECRETARIAT WAY  
 Nampa, ID 83686  
 (208) 899-0874 \* ulmergc@gmail.com

Date: December 10, 2021  
 Stamp:

Project for:  
**Post Falls ID McGuire Stake Suite Addition**  
**Coeur d' Alene ID Stake**  
 1670 North McGuire road  
 Post Falls, Idaho 83854

Project for:  
**THE CHURCH OF JESUS CHRIST OF LATTER-DAY SAINTS**

Mark	Date (m.d.y)	Description

Project Number: 22112  
 Plan Series: HER-98  
 Property Number: 581027220030101

Sheet Title:  
**AUTOMATIC TEMPERATURE CONTROL AND WIRING SCHEDULES**

Sheet:  
**ME301**