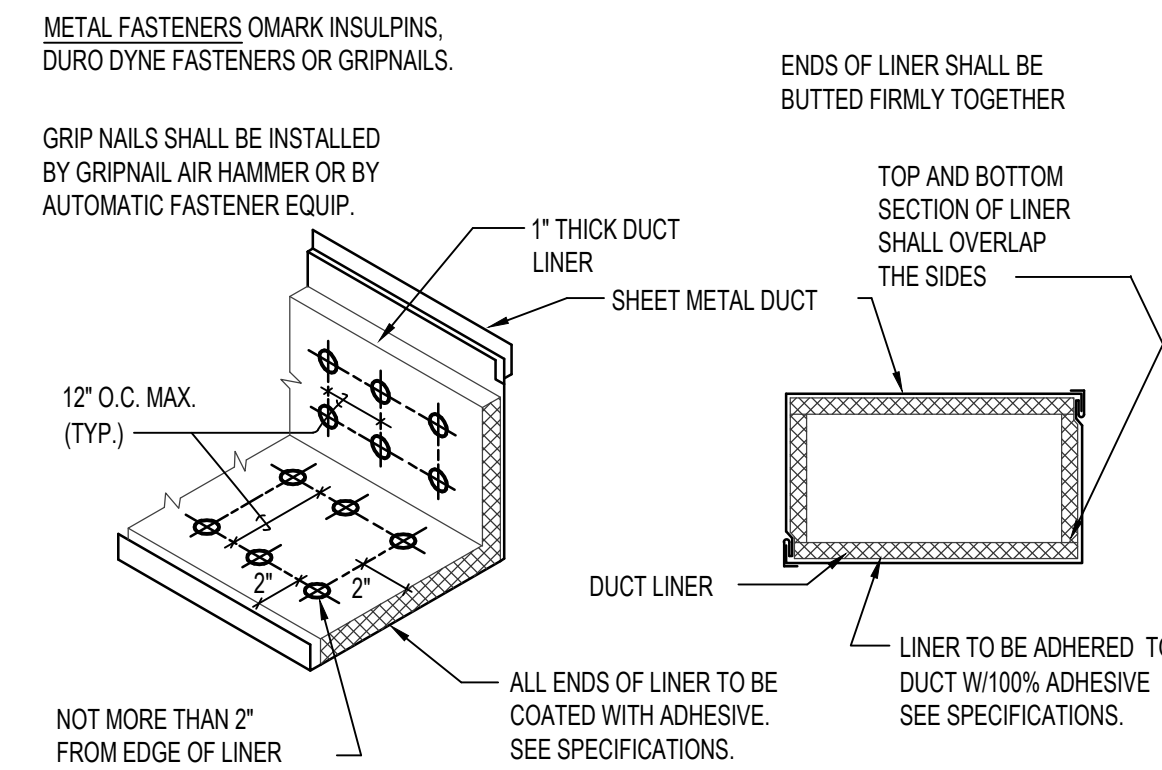


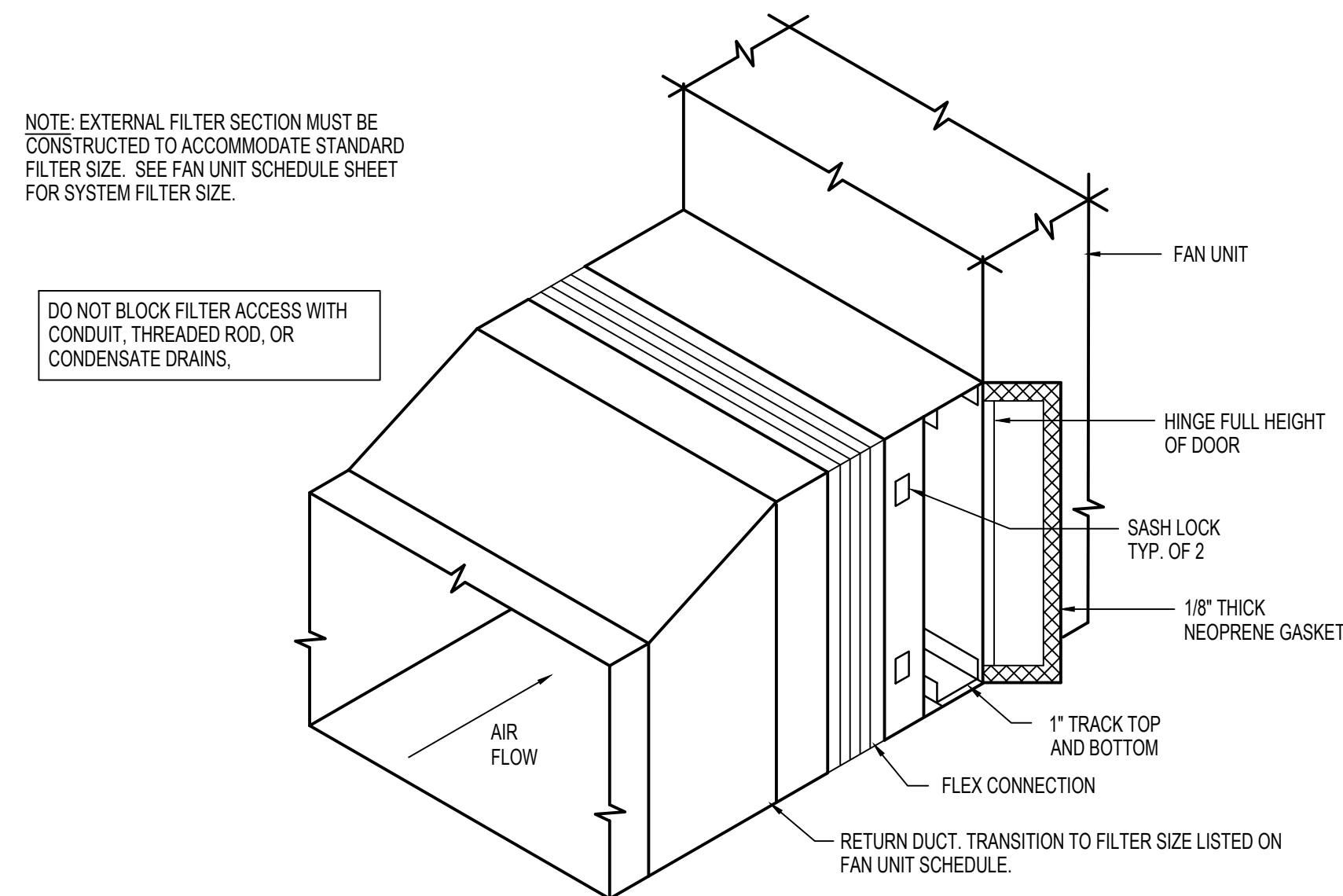
DIMENSION OF LONGEST SIDE, INCHES	SHEET METAL GAUGE (ALL FOUR SIDES)	MINIMUM REINFORCING ANGLE SIZE AND MAXIMUM LONGITUDINAL SPACING BETWEEN TRANSVERSE JOINTS &/OR INTERMEDIATE REINFORCING	TRANSVERSE REINFORCING (1)				
			AT JOINTS				
			MIN. H. IN.	DRIVE SLIP	HEMMED S SLIP	ALTERNATE BAR SLIP	REINFORCED BAR SLIP
UP THRU 12	26	NONE REQUIRED	1	26	26	24	24
13-18	24	NONE REQUIRED	1	24	24	24	24
19-30	24	1"x1"x1/8" @ 60 IN	1	-	24	24	24
31-42	22	1"x1"x1/8" @ 60 IN	1	-	-	22	22

(1) TRANSVERSE REINFORCING SIZE IS DETERMINED BY DIMENSION OF SIDE TO WHICH ANGLE IS APPLIED.

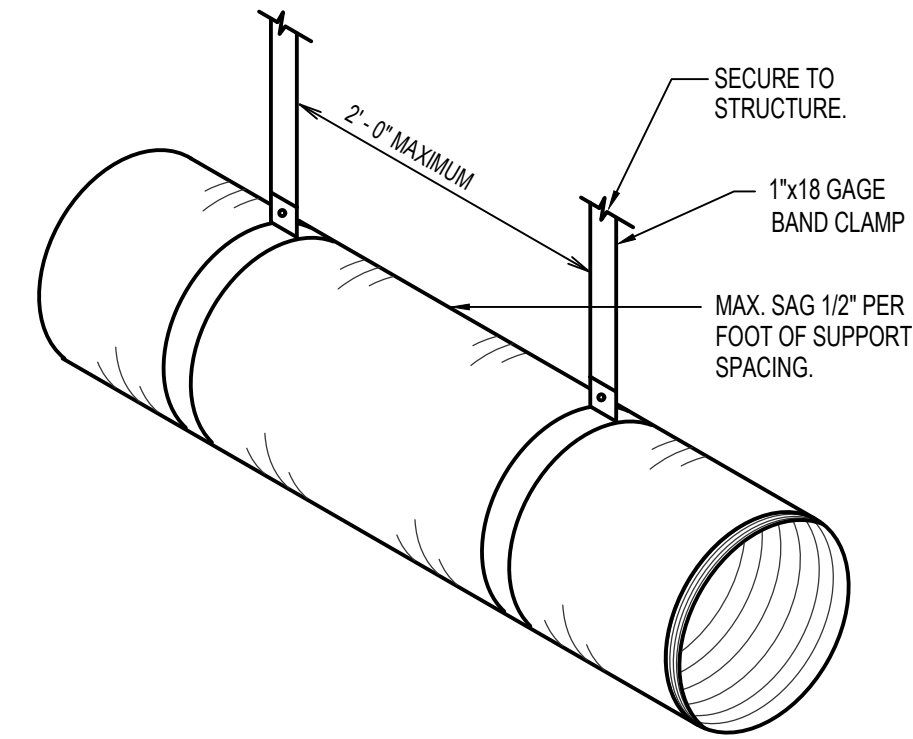
**A** DUCT CONSTRUCTION DETAIL  
NO SCALE



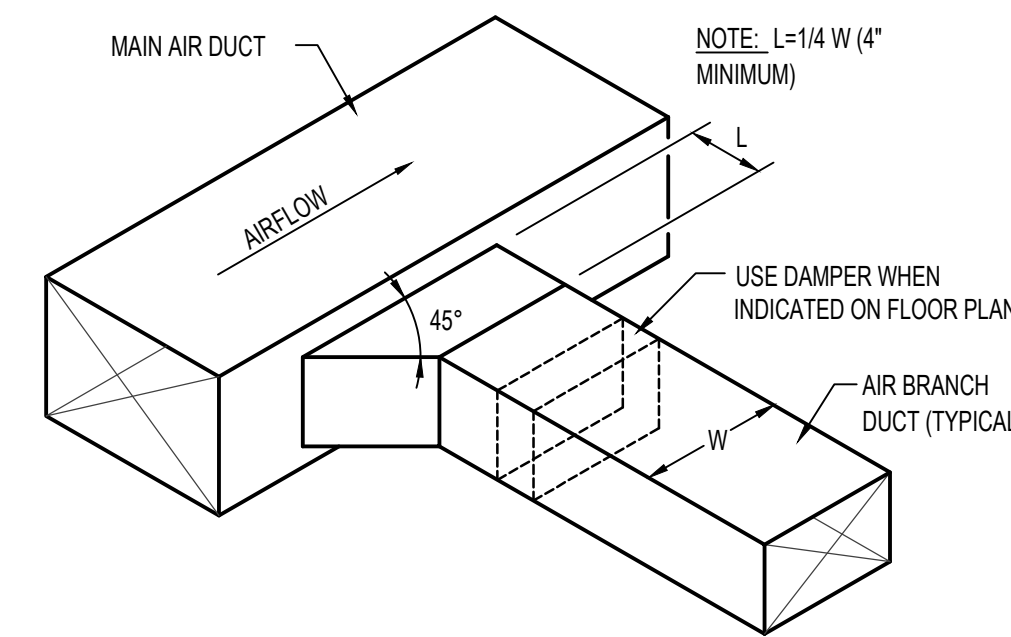
**D** DUCT LINER DETAIL  
NO SCALE



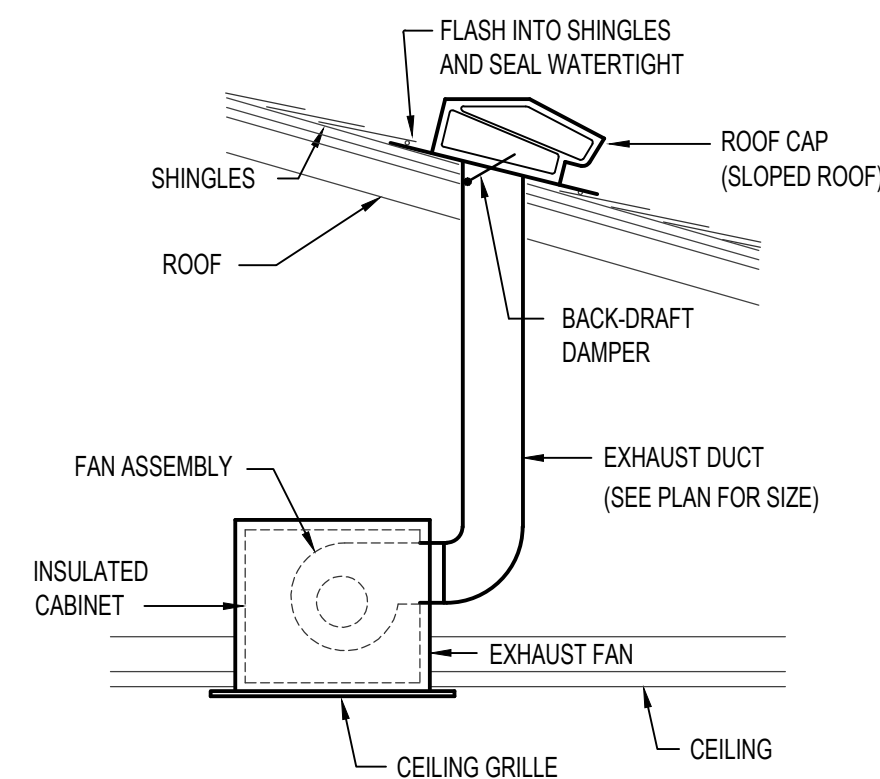
**G** EXTERNAL FILTER SECTION DETAIL  
NO SCALE  
HORIZONTAL CONFIGURATION



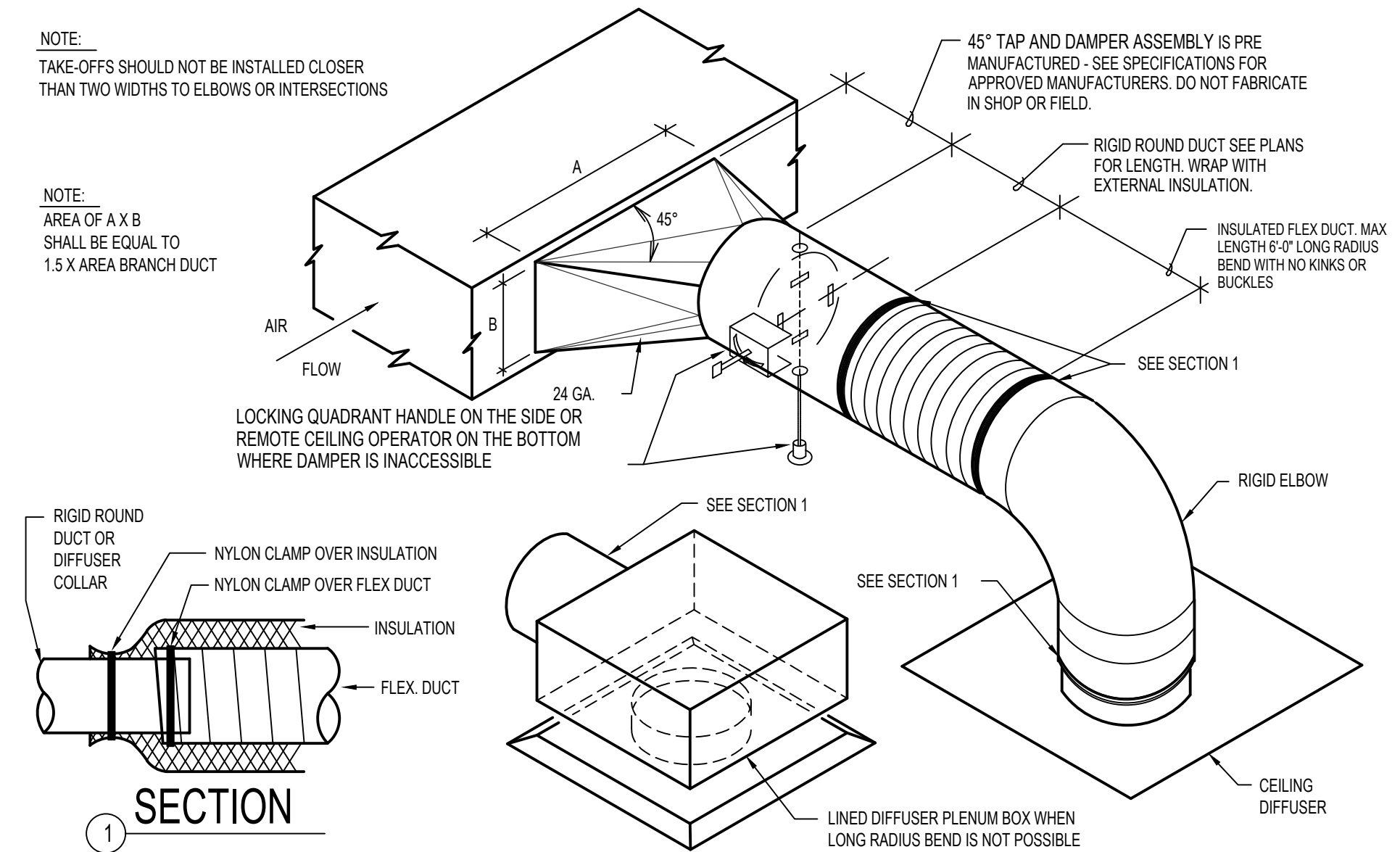
**B** FLEXIBLE DUCT SUPPORT DETAIL  
NO SCALE



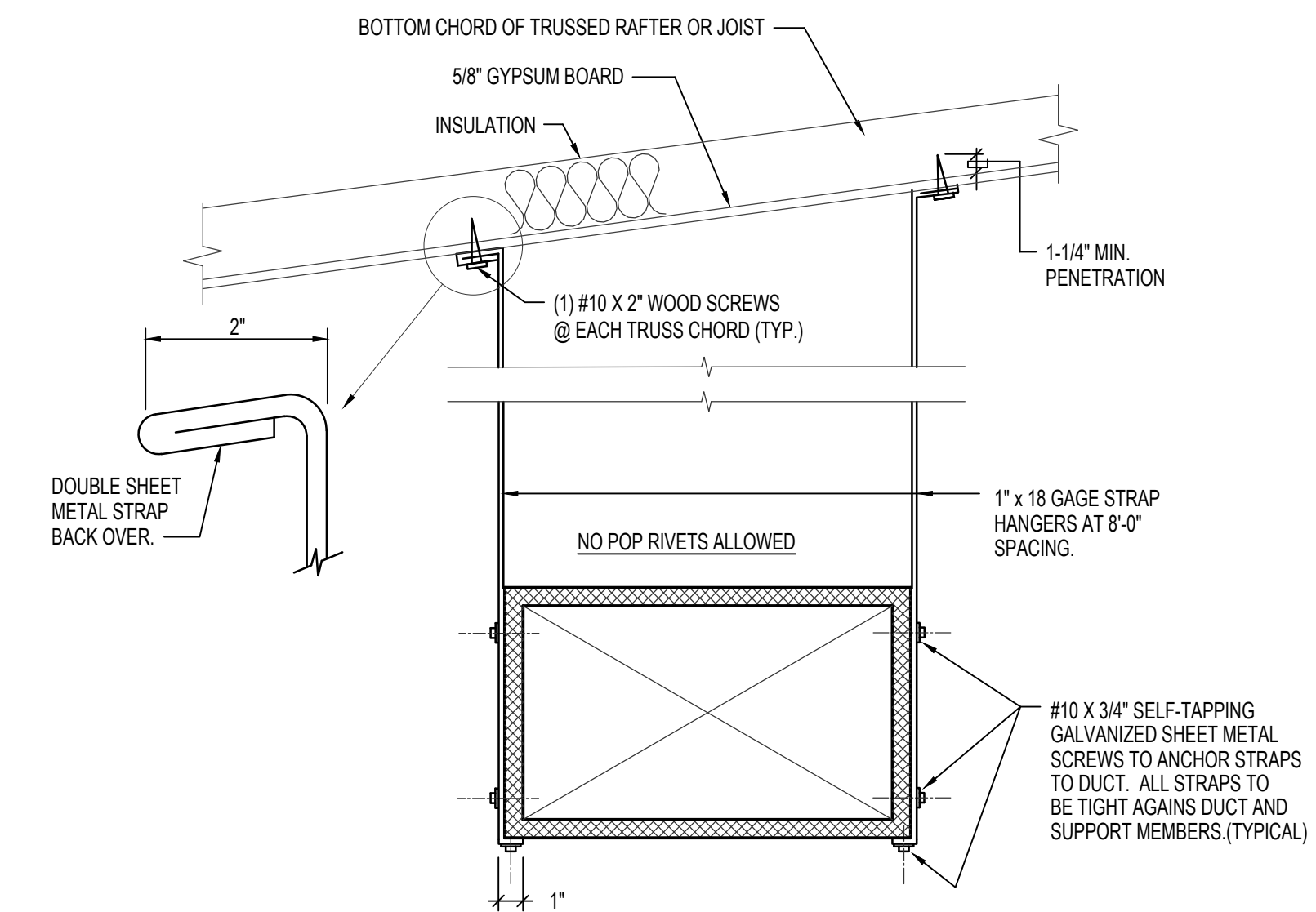
**E** RECTANGULAR DUCT CONNECTION DETAIL  
NO SCALE



**H** CEILING MOUNTED EXHAUST FAN DETAIL  
NO SCALE



**C** SQUARE TO ROUND TAKE-OFF DETAILS  
NO SCALE



**F** DUCT STRAP HANGER DETAIL  
NO SCALE

Architect / Engineer:

**GENE C. ULMER**  
ARCHITECT  
1506 S. SECRETARIAT WAY  
Nampa, ID 83686  
(208) 899-0874 \* ulmergc@gmail.com

Date: December 10, 2021

Stamp:

Post Falls ID McGuire  
Suite Addition  
Coeur d' Alene ID Stke  
1670 North McGuire road  
Post Falls, Idaho 83854

Project for:  
**THE CHURCH OF JESUS CHRIST OF LATTER-DAY SAINTS**

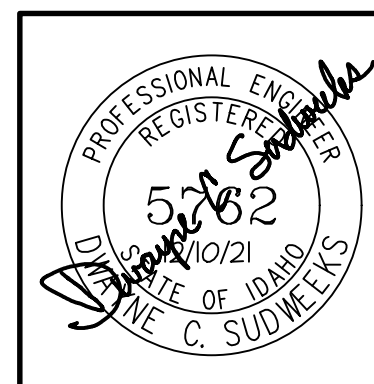
Mark	Date (m.d.y)	Description

Project Number:  
22112  
Plan Series:  
HER-98  
Property Number:  
581027220030101

Sheet Title:  
**MECHANICAL DETAILS**

Sheet:

**M202**



**Engineered Systems Associates**  
1355 EAST CENTER  
POCATELLO, IDAHO 83201  
PHONE: (208) 233-0501  
FAX: (208) 233-0529  
EMAIL: eso@engsystems.com  
ESA JOB NUMBER: 21064