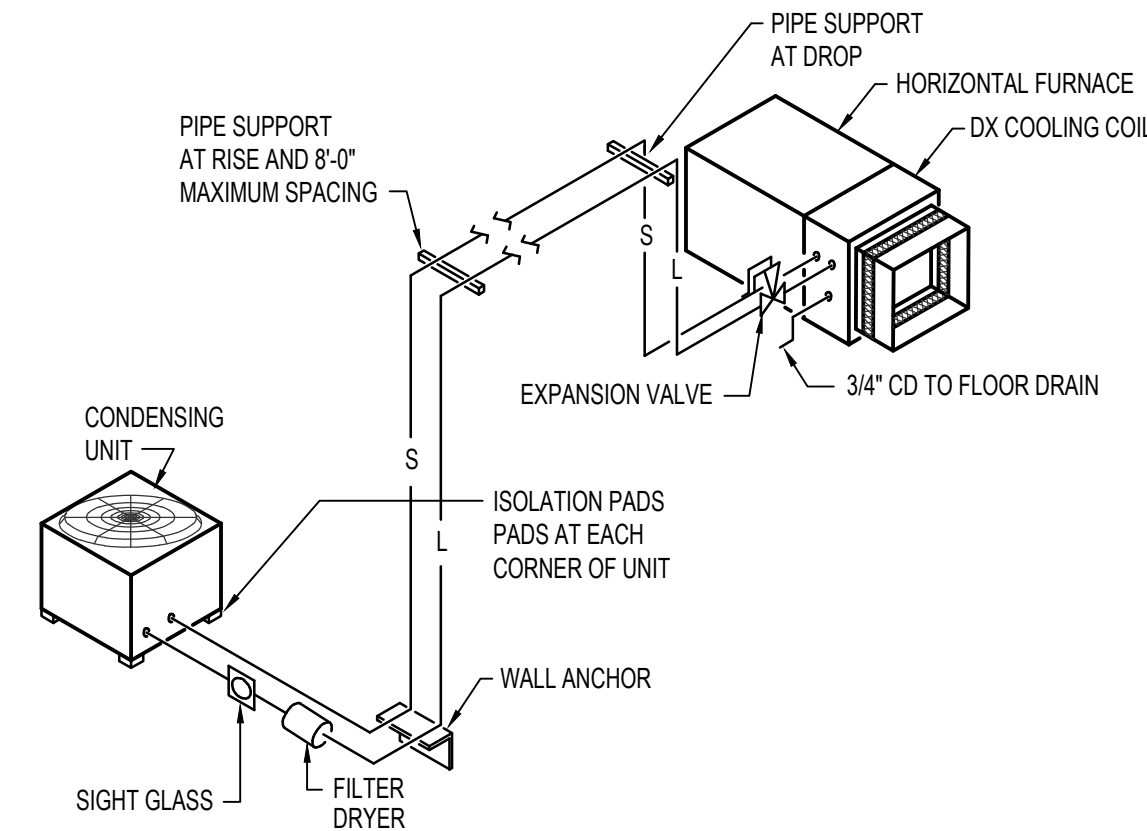
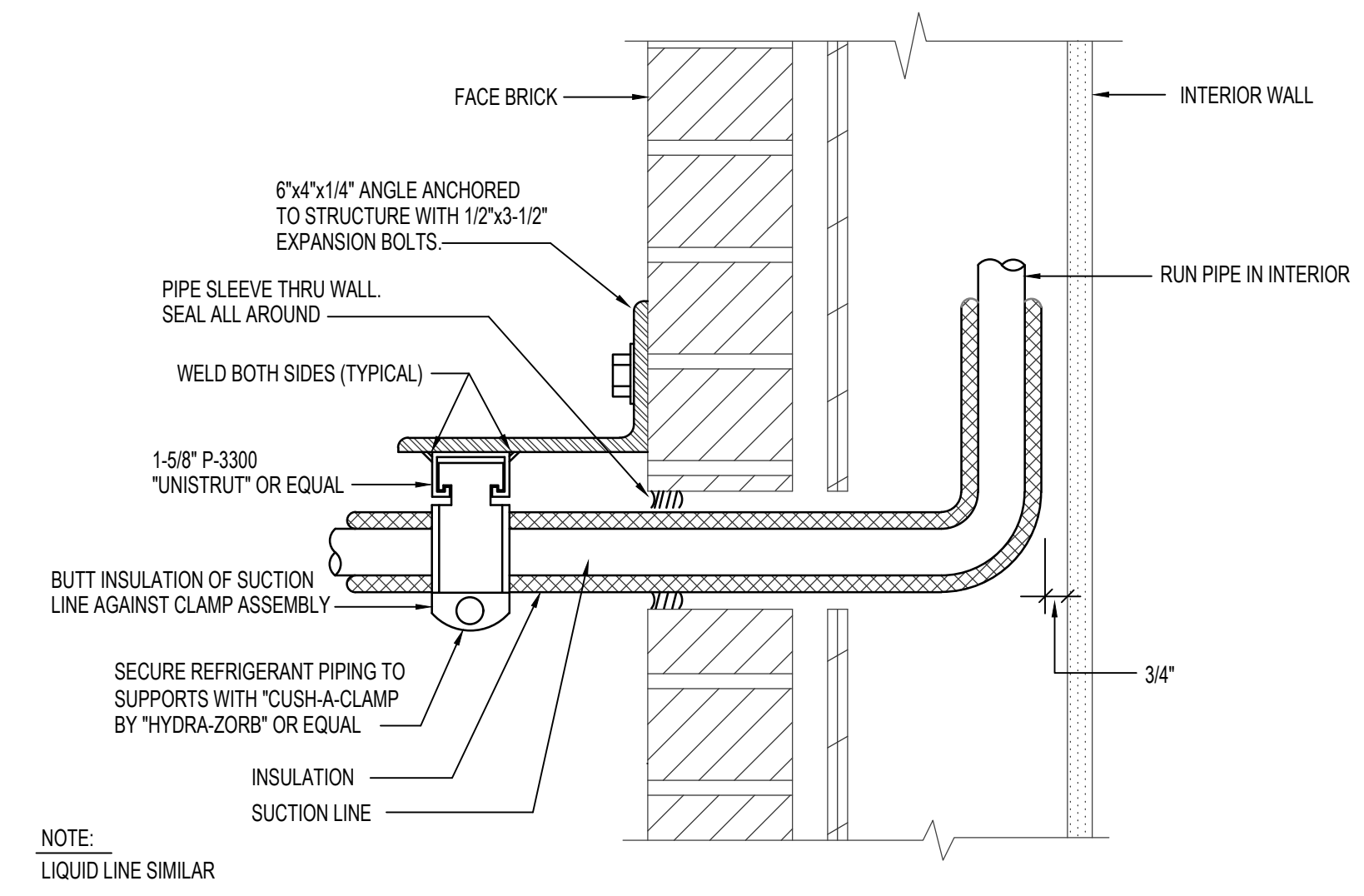


A CONCENTRIC VENT TERMINATION DETAIL
NO SCALE

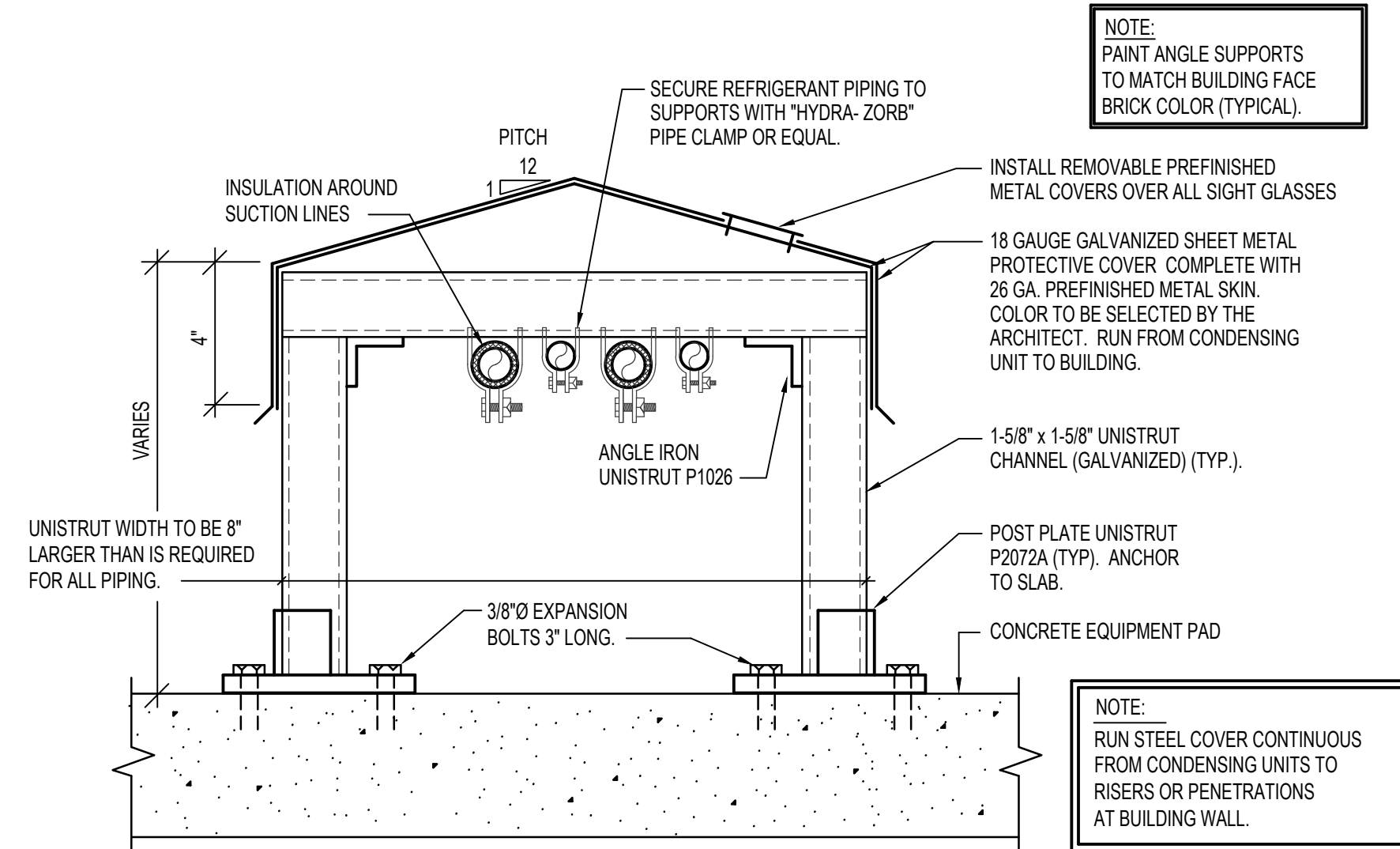


B REFRIGERANT PIPING DIAGRAM
NO SCALE



NOTE:
LIQUID LINE SIMILAR

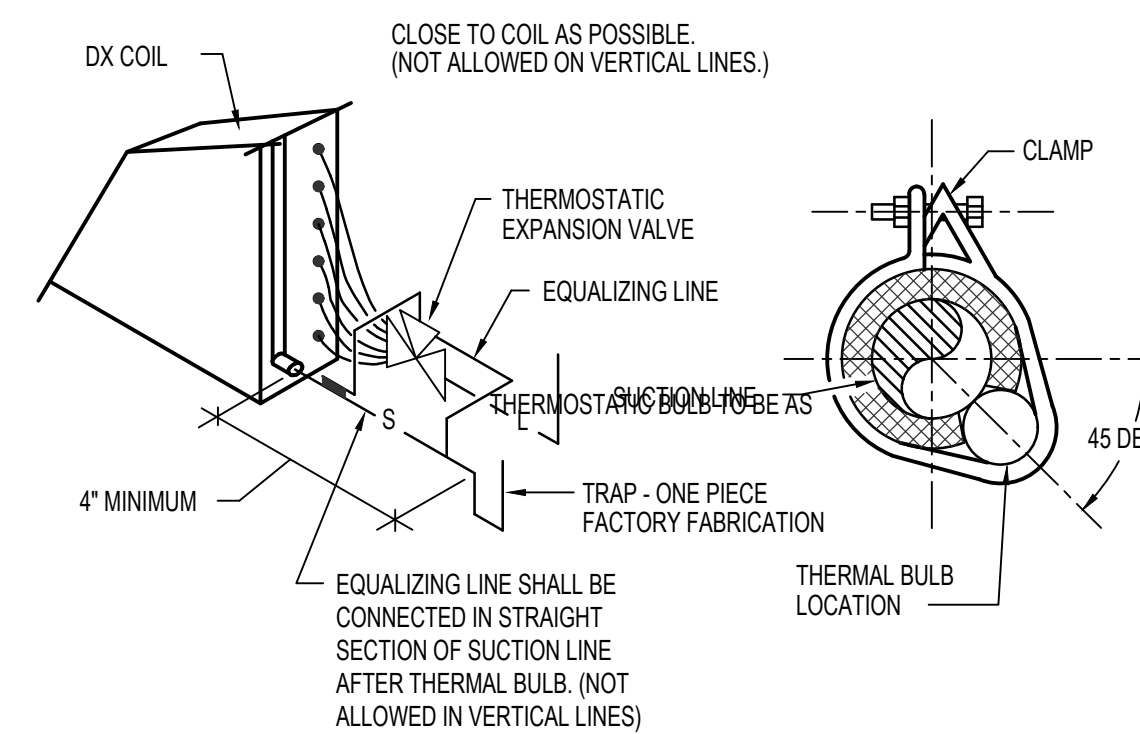
C REFRIGERANT PIPE SUPPORT AT WALL
NO SCALE



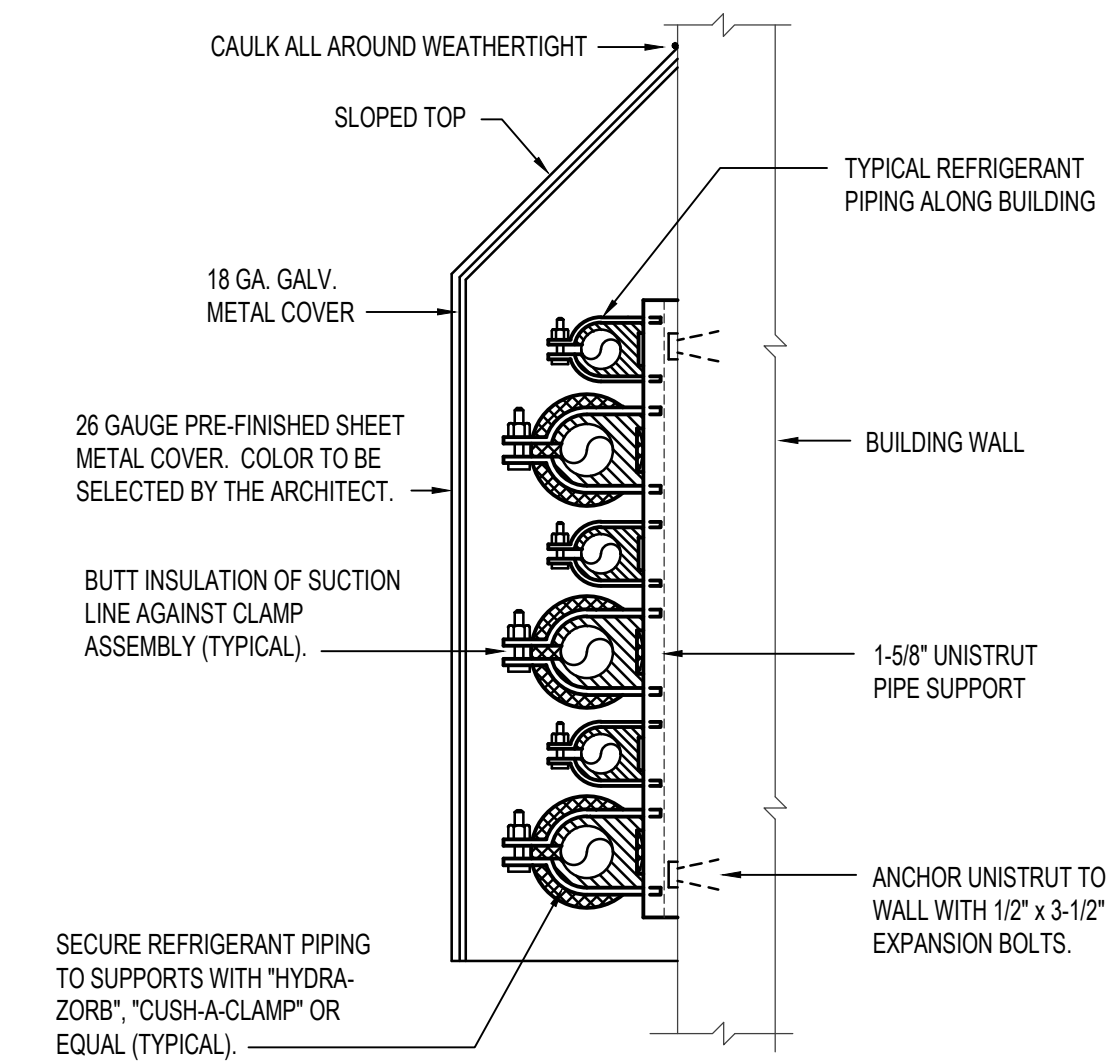
NOTE:
PAINT ANGLE SUPPORTS TO MATCH BUILDING FACE BRICK COLOR (TYPICAL).

NOTE:
RUN STEEL COVER CONTINUOUS FROM CONDENSING UNITS TO RISERS OR PENETRATIONS AT BUILDING WALL.

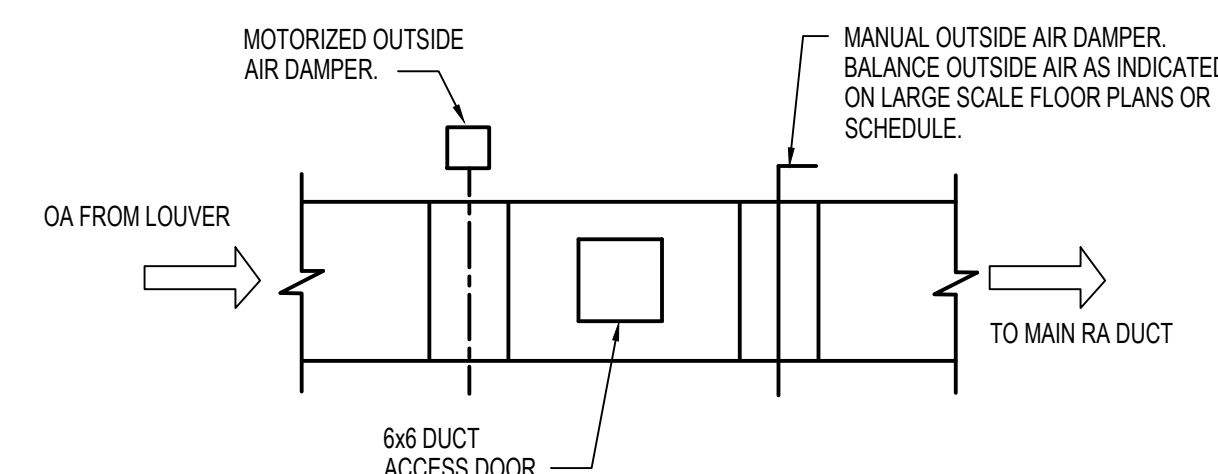
D REFRIGERANT PIPE SUPPORT DETAIL
NO SCALE



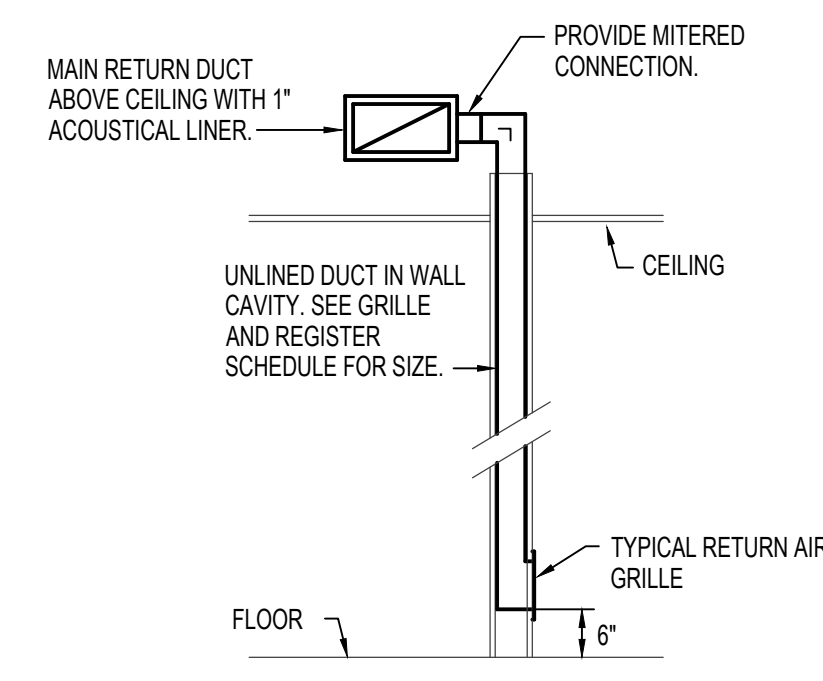
E REFRIGERANT COIL CONNECTION DETAIL
NO SCALE



F PIPE SUPPORT ALONG BUILDING
NO SCALE



G TYPICAL OUTSIDE AIR DUCT DETAIL
NO SCALE



H RETURN AIR GRILLE DETAIL
NO SCALE

Architect / Engineer:

GENE C. ULMER
ARCHITECT
1506 S. SECRETARIAT WAY
Nampa, ID 83686
(208) 899-0874 * ulmergc@gmail.com

Date: December 10, 2021

Stamp:

Post Falls ID McGuire
Stake Suite Addition
Coeur d' Alene ID Stke
1670 North McGuire road
Post Falls, Idaho 83854

Project for:
THE CHURCH OF JESUS CHRIST OF LATTER-DAY SAINTS

Mark	Date (max)	Description

Project Number:
22112
Plan Series:
HER-98
Property Number:
581027220030101

Sheet Title:
LARGE SCALE MECHANICAL ROOM AND DETAILS

Sheet:

M201

Engineered Systems Associates
1355 EAST CENTER
POCATELLO, IDAHO 83201
PHONE: (208) 233-0501
FAX: (208) 233-0529
EMAIL: esa@engsystems.com
ESA JOB NUMBER: 21064

PROFESSIONAL ENGINEER REGISTERED IN THE STATE OF IDAHO
5282
JANE C. SUDWICKS