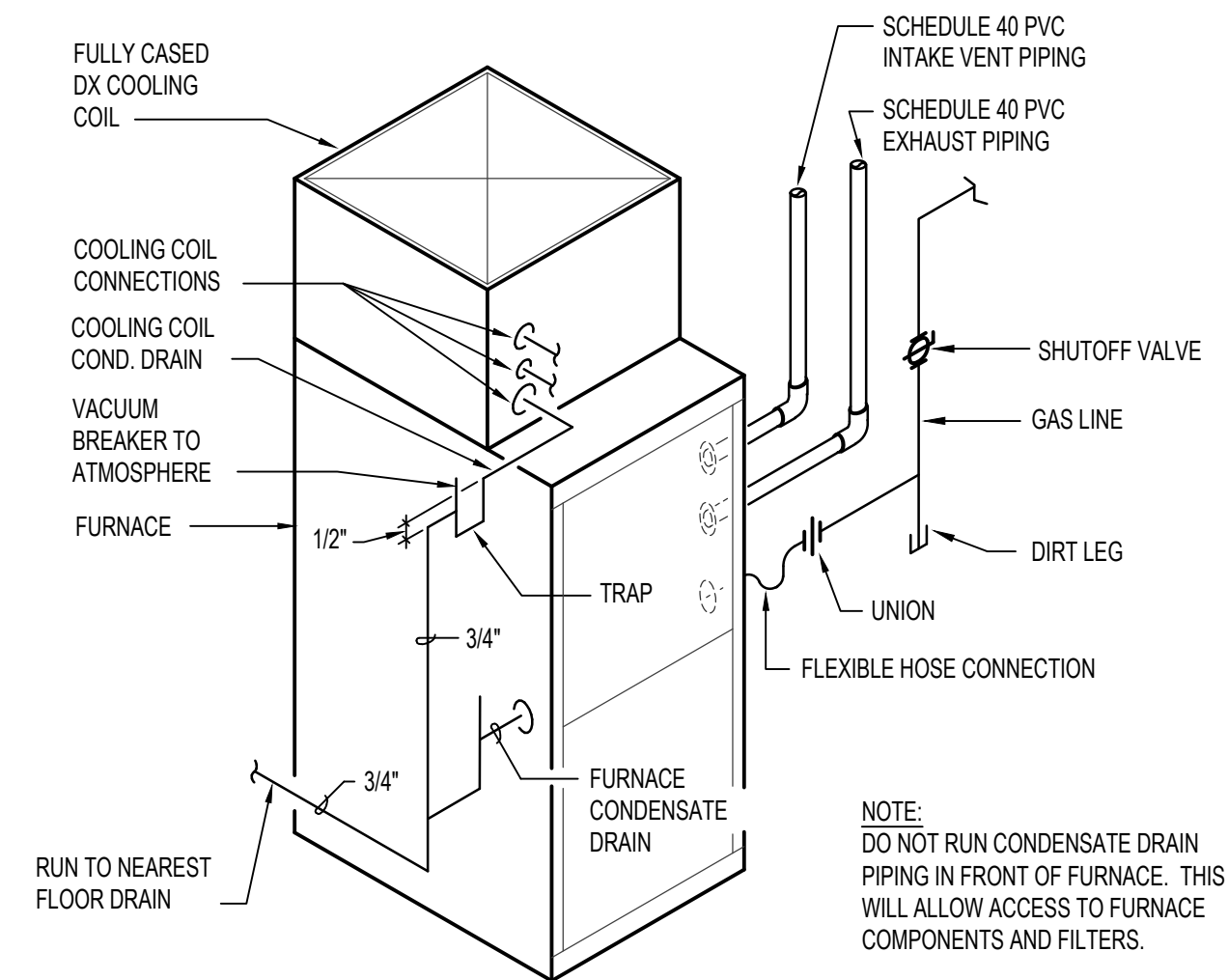
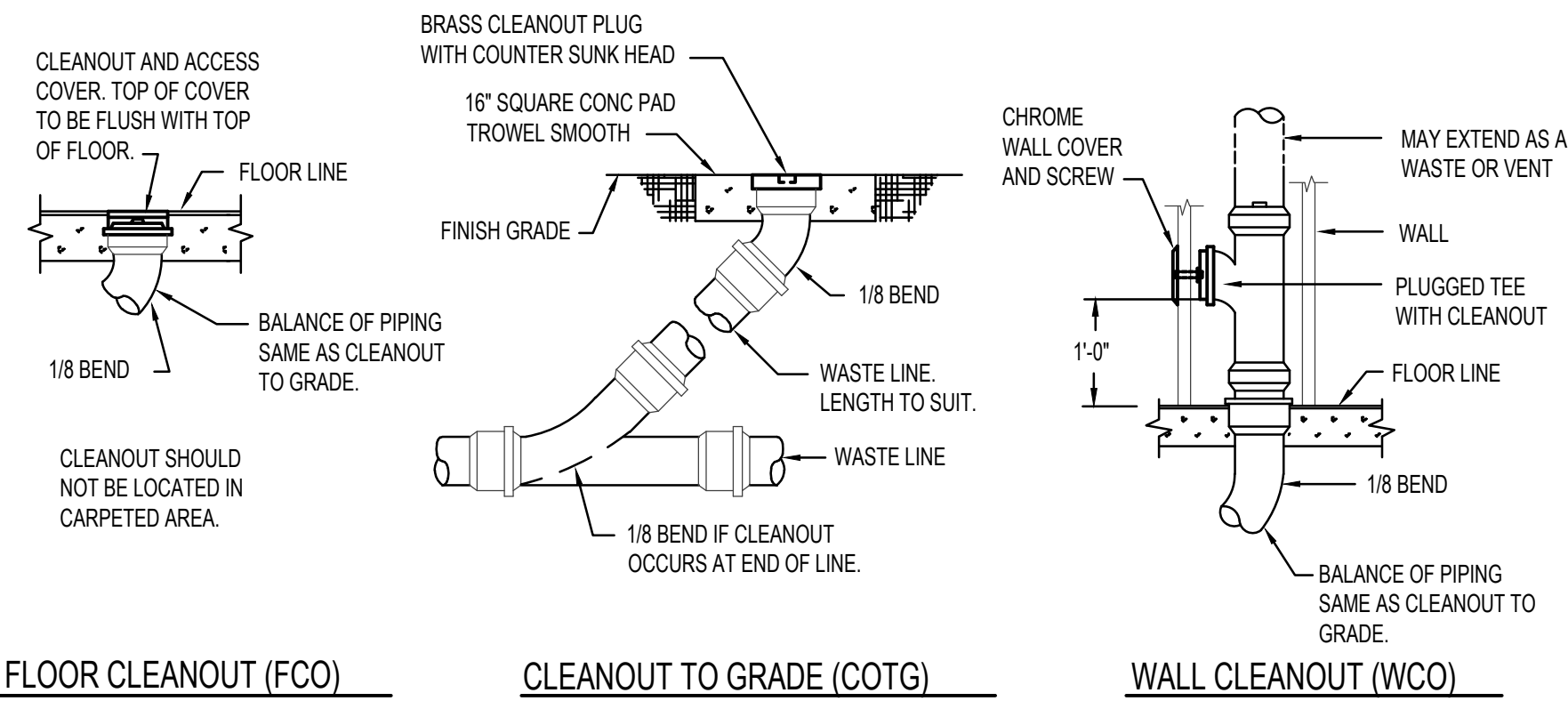


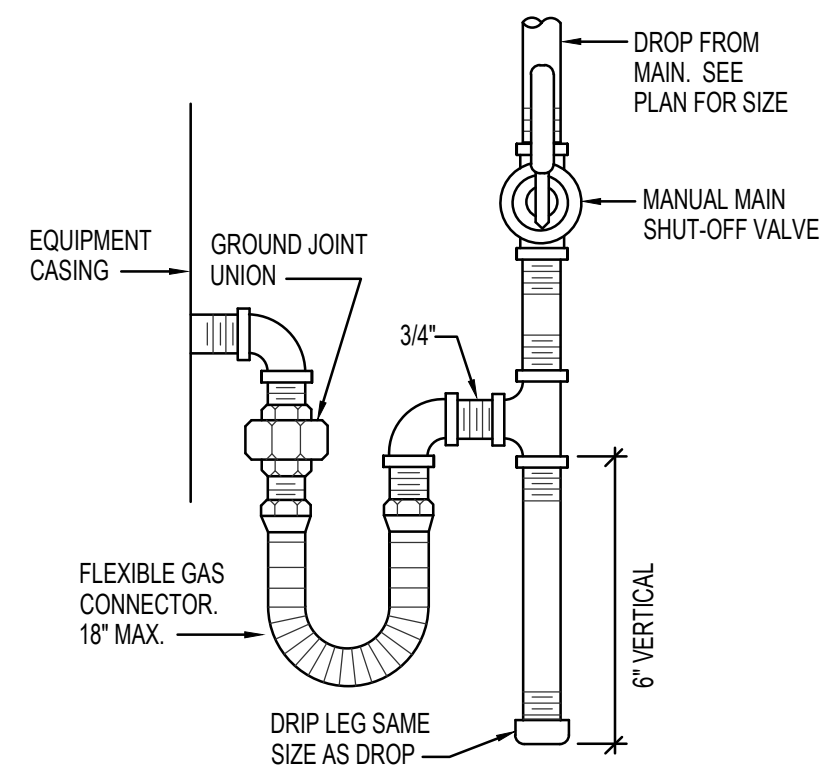
A TRAP PRIMER DETAIL
NO SCALE



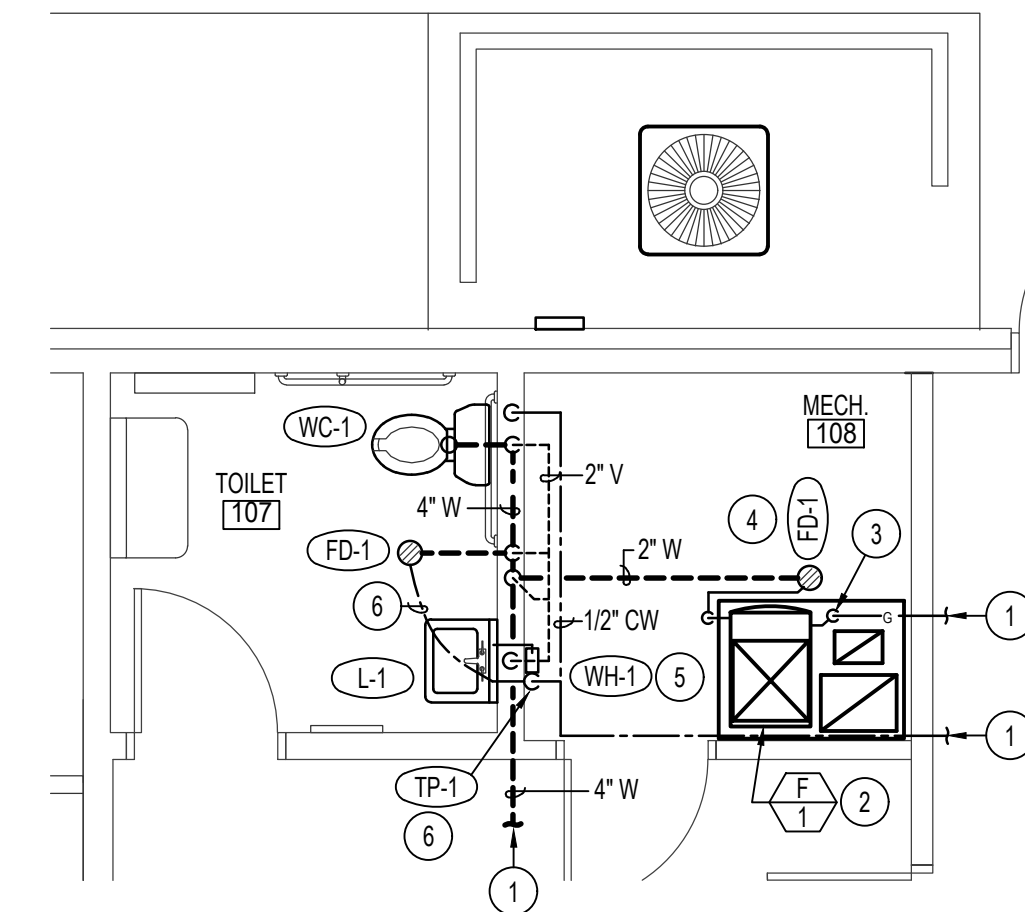
C CONDENSATE DRAIN PIPING DETAIL
NO SCALE



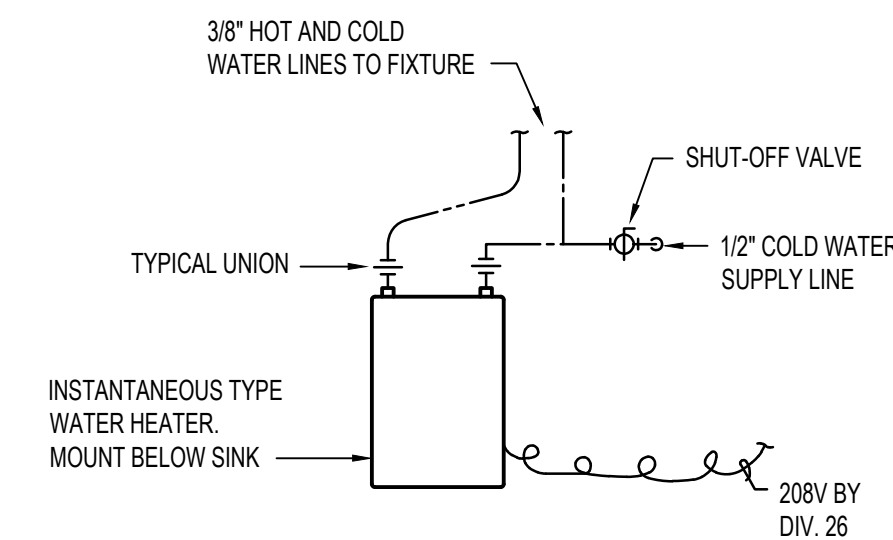
B CLEAN OUT DETAILS
NO SCALE



D GAS LINE CONNECTION DETAIL
NO SCALE



LARGE SCALE TOILET ROOM
SCALE: 1/4" = 1'-0"
North



E TANKLESS WATER HEATER PIPING DETAIL
NO SCALE

PLAN NOTES:

- 1 REFER TO SHEET P101 FOR CONTINUATION OF PIPING.
- 2 NEW GAS FURNACE AND REMOTE CONDENSING UNIT PROVIDED AND INSTALLED BY MECHANICAL CONTRACTOR.
- 3 ROUGH-IN AND CONNECT 3/4" GAS LINE WITH SHUT-OFF VALVE AND FLEXIBLE HOSE CONNECTION. REFER TO GAS LINE CONNECTION DETAIL D/P201 FOR TYPICAL GAS LINE CONNECTION.
- 4 CONNECT DRAIN LINES FROM FURNACE AND DX COIL. RUN DRAIN LINES TO FLOOR DRAIN. REFER TO FURNACE PIPING DIAGRAM C/P201 FOR TYPICAL PIPING CONNECTIONS.
- 5 PROVIDE AND INSTALL NEW WALL MOUNTED ELECTRIC INSTANTANEOUS WATER HEATER AS SPECIFIED. CONNECT TO 1/2" COLD WATER LINE AND RUN 1/2" HOT WATER LINE TO ADJACENT LAVATORY.
- 6 PROVIDE TRAP PRIMER VALVE AS SPECIFIED. MOUNT IN MECHANICAL ROOM. RUN 1/2" LINE BELOW FLOOR TO FLOOR DRAIN. REFER TO DETAIL A/P201 FOR TYPICAL TRAP PRIMER INSTALLATION AND PIPING CONNECTIONS.

Engineered Systems Associates
1355 EAST CENTER
POCATELLO, IDAHO 83201
PHONE: (208) 233-0501
FAX: (208) 233-0529
EMAIL: esa@engsystems.com
ESA JOB NUMBER: 21026

Architect / Engineer:
GENE C. ULMER ARCHITECT
1506 S. SECRETARIAT WAY
NAMP A, ID 83686
(208) 899-0874 * ulmergc@gmail.com

Date: June 22, 2021
Stamp:

Nampa ID Ridgevue
Stake Suite Addition
Nampa ID Ridgevue Stake
18463 Northside Boulevard
Nampa, Idaho 83687

Project for:
THE CHURCH OF JESUS CHRIST OF LATTER-DAY SAINTS

Mark	Date (m.d.y)	Description

Project Number: 22112
Plan Series: HER-98
Property Number: 581027220030101

Sheet Title:
PLUMBING DETAILS

Sheet:
P201