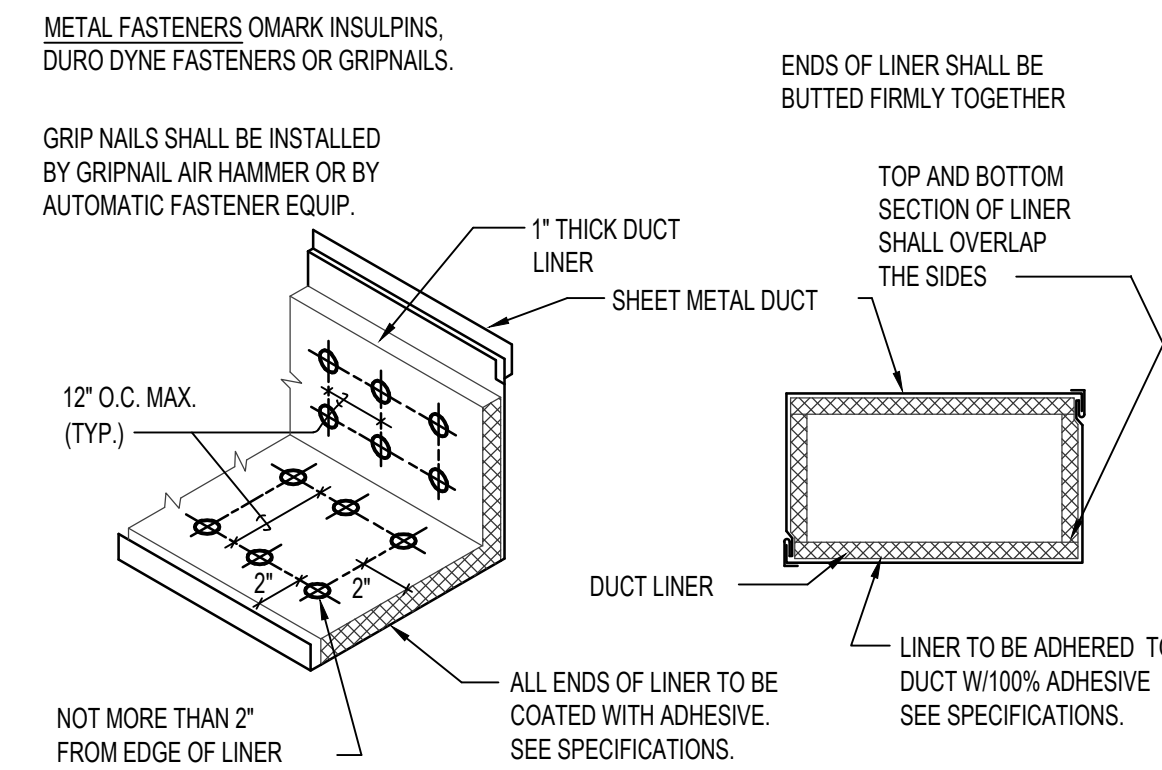


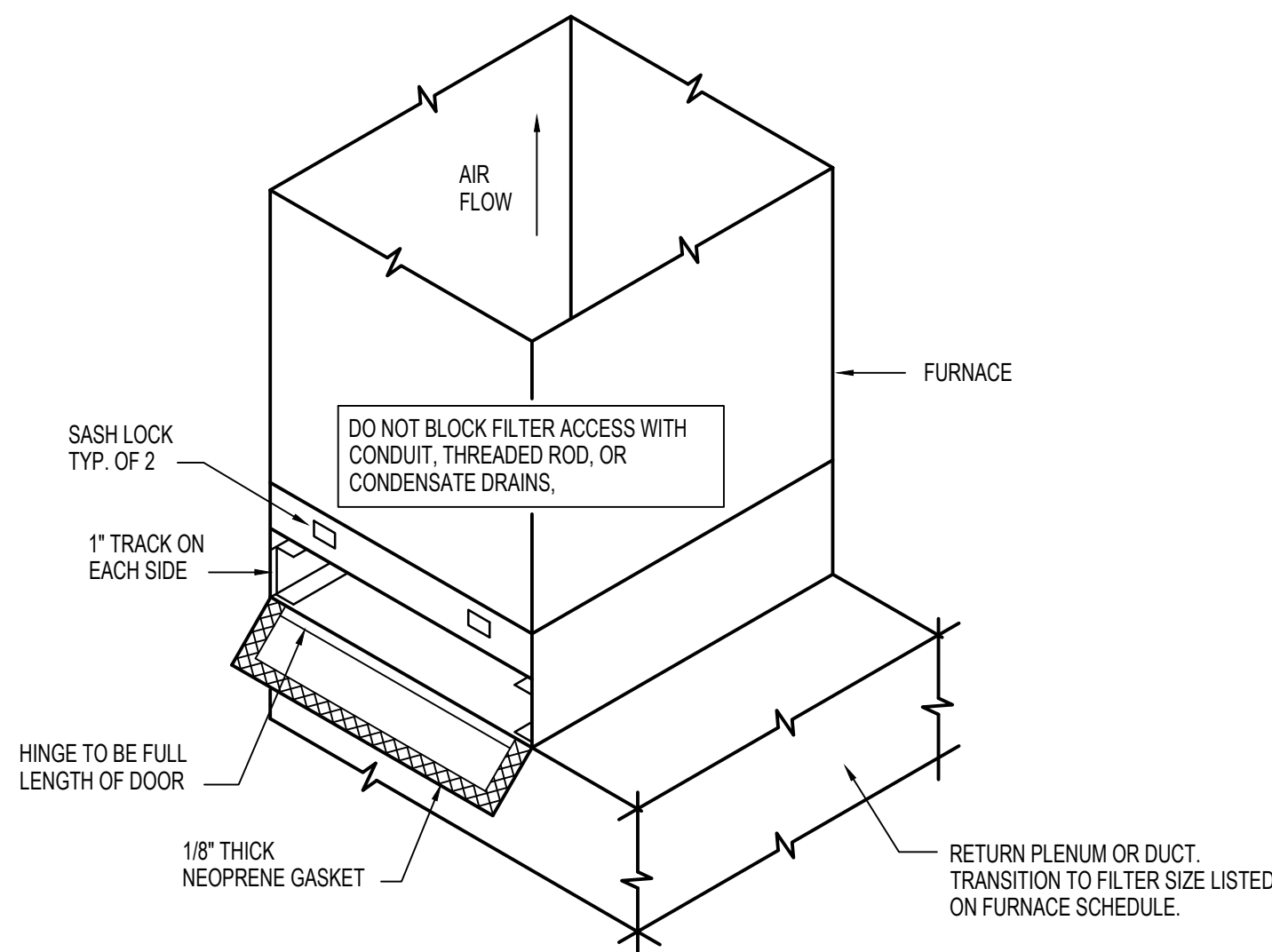
DIMENSION OF LONGEST SIDE, INCHES	SHEET METAL GAUGE (ALL FOUR SIDES)	MINIMUM REINFORCING ANGLE SIZE AND MAXIMUM LONGITUDINAL SPACING BETWEEN TRANSVERSE JOINTS & OR INTERMEDIATE REINFORCING	TRANSVERSE REINFORCING (1)				
			AT JOINTS				
			MIN. H. IN.	DRIVE SLIP	HEMMED S SLIP	ALTERNATE BAR SLIP	REINFORCED BAR SLIP
UP THRU 12	26	NONE REQUIRED	1	26	26	24	24
13-18	24	NONE REQUIRED	1	24	24	24	24
19-30	24	1"x1"x1/8" @ 60 IN	1	-	24	24	24
31-42	22	1"x1"x1/8" @ 60 IN	1	-	-	22	22

(1) TRANSVERSE REINFORCING SIZE IS DETERMINED BY DIMENSION OF SIDE TO WHICH ANGLE IS APPLIED.

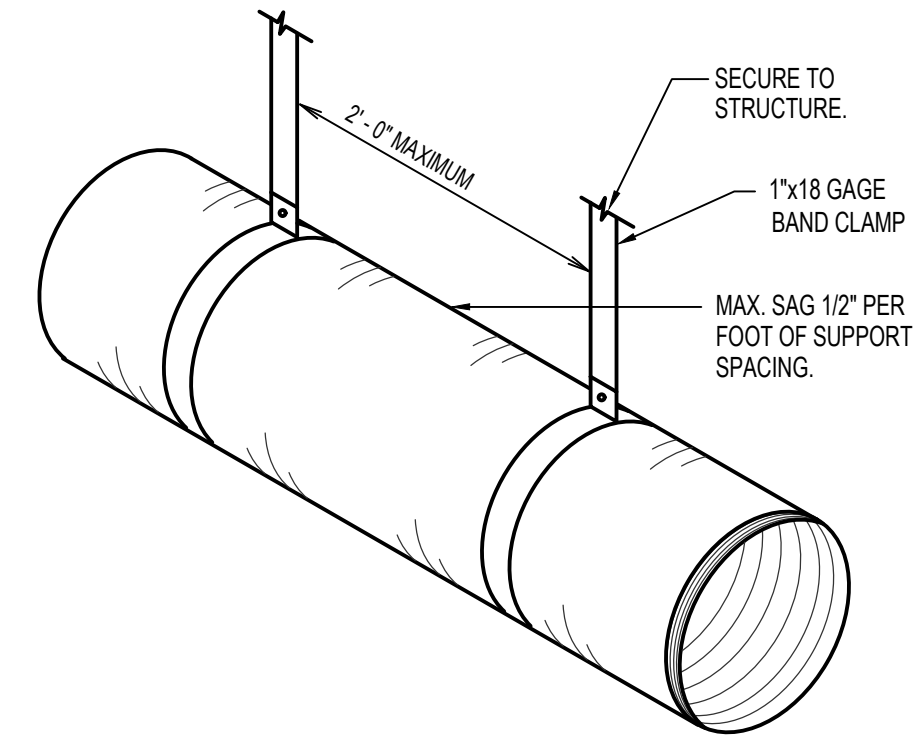
A DUCT CONSTRUCTION DETAIL
NO SCALE



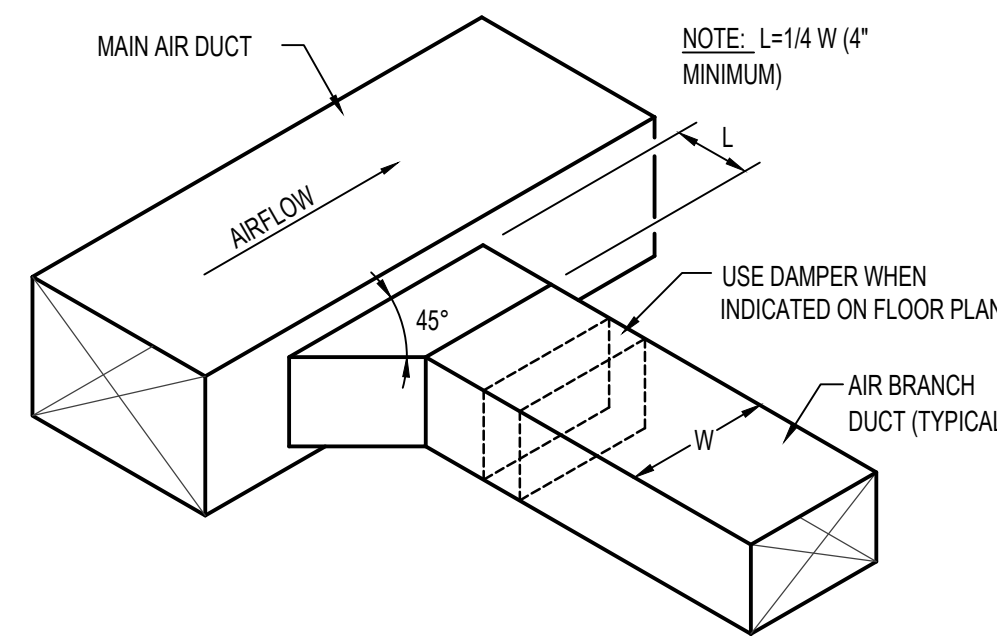
D DUCT LINER DETAIL
NO SCALE



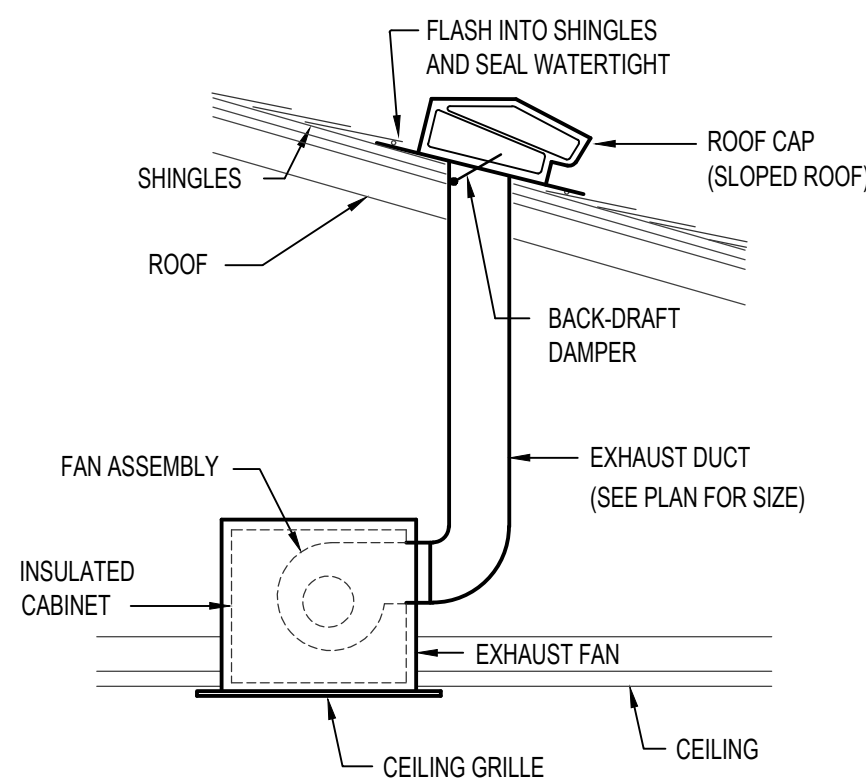
G EXTERNAL FILTER SECTION DETAIL
NO SCALE
UP-FLOW CONFIGURATION



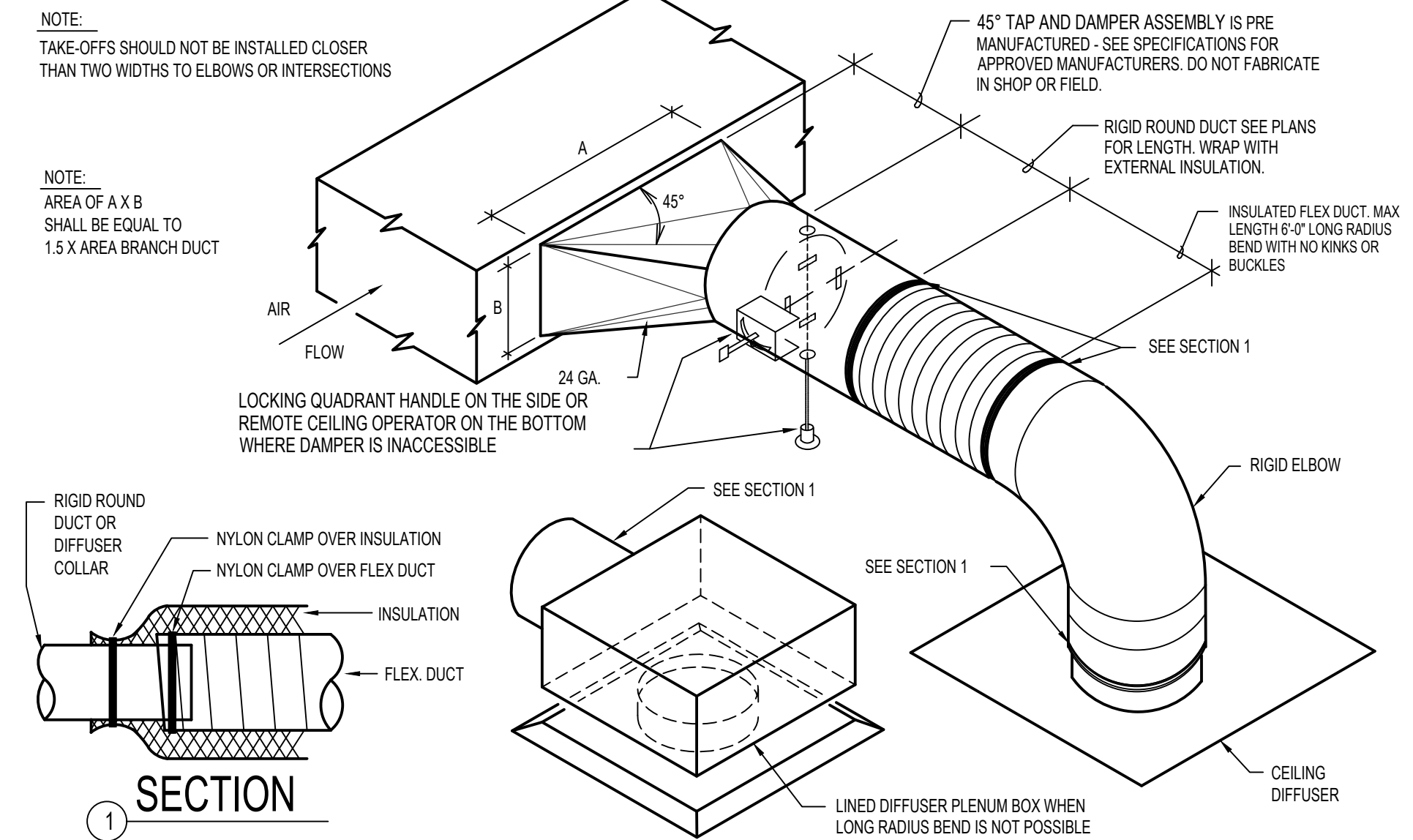
B FLEXIBLE DUCT SUPPORT DETAIL
NO SCALE



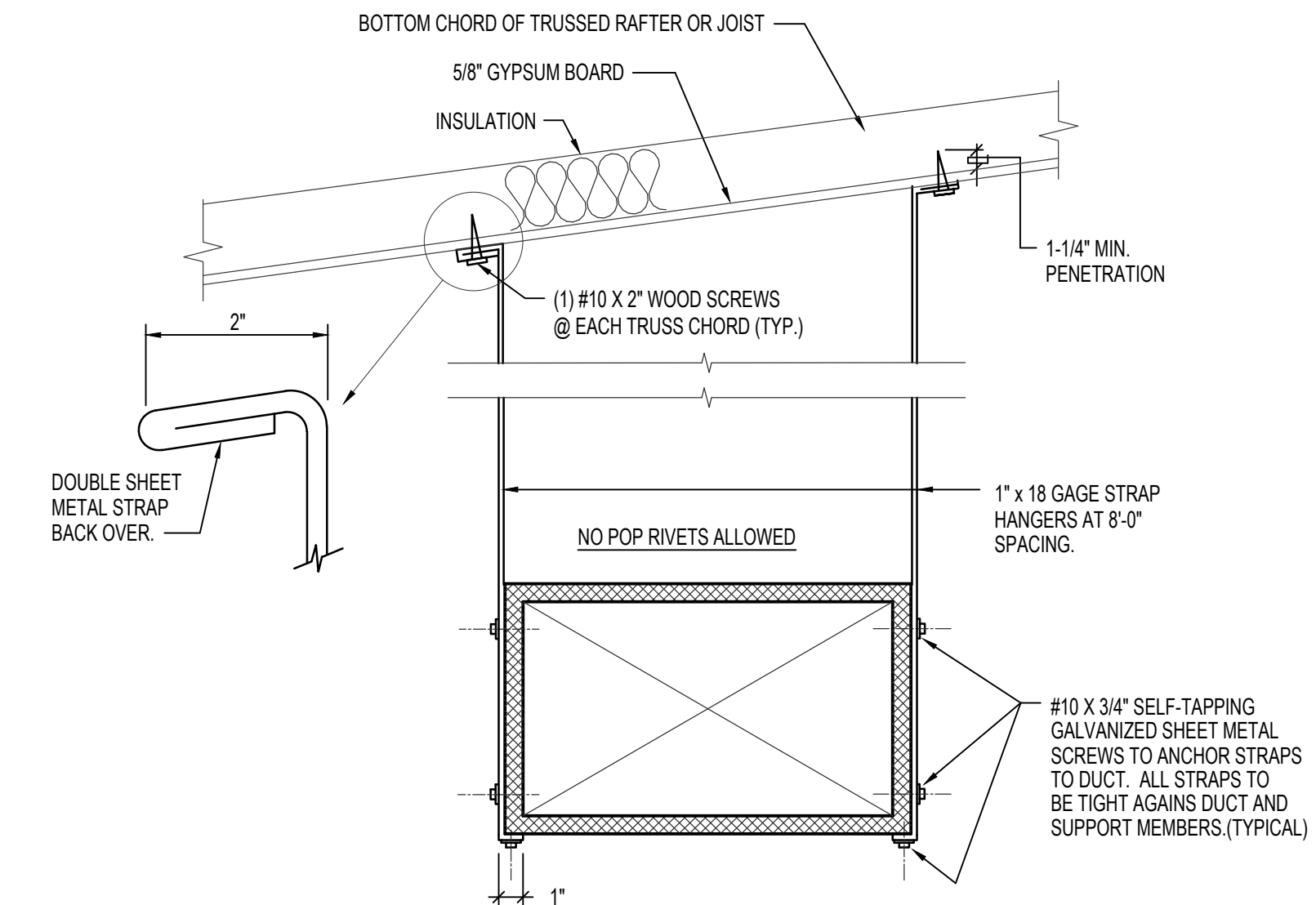
E RECTANGULAR DUCT CONNECTION DETAIL
NO SCALE



H CEILING MOUNTED EXHAUST FAN DETAIL
NO SCALE



C SQUARE TO ROUND TAKE-OFF DETAILS
NO SCALE



F DUCT STRAP HANGER DETAIL
NO SCALE

Professional Engineer
REGISTERED
5282
STATE OF IDAHO
C. SUDWICKS

Engineered Systems Associates
1355 EAST CENTER
POCATELLO, IDAHO 83201
PHONE: (208) 233-0501
FAX: (208) 233-0529
EMAIL: esa@engsystems.com
ESA JOB NUMBER: 21026

Architect / Engineer:
GENE C. ULMER ARCHITECT
1506 S. SECRETARIAT WAY
Nampa, ID 83686
(208) 899-0874 * ulmergc@gmail.com

Date: June 22, 2021
Stamp:

Nampa ID Ridgevue
Stake Suite Addition
Nampa ID Ridgevue Stake
18463 Northside Boulevard
Nampa, Idaho 83687

Project for:
THE CHURCH OF JESUS CHRIST OF LATTER-DAY SAINTS

Mark	Date (m.d.y)	Description

Project Number: 22112
Plan Series: HER-98
Property Number: 581027220030101

Sheet Title:
MECHANICAL DETAILS

Sheet:
M202