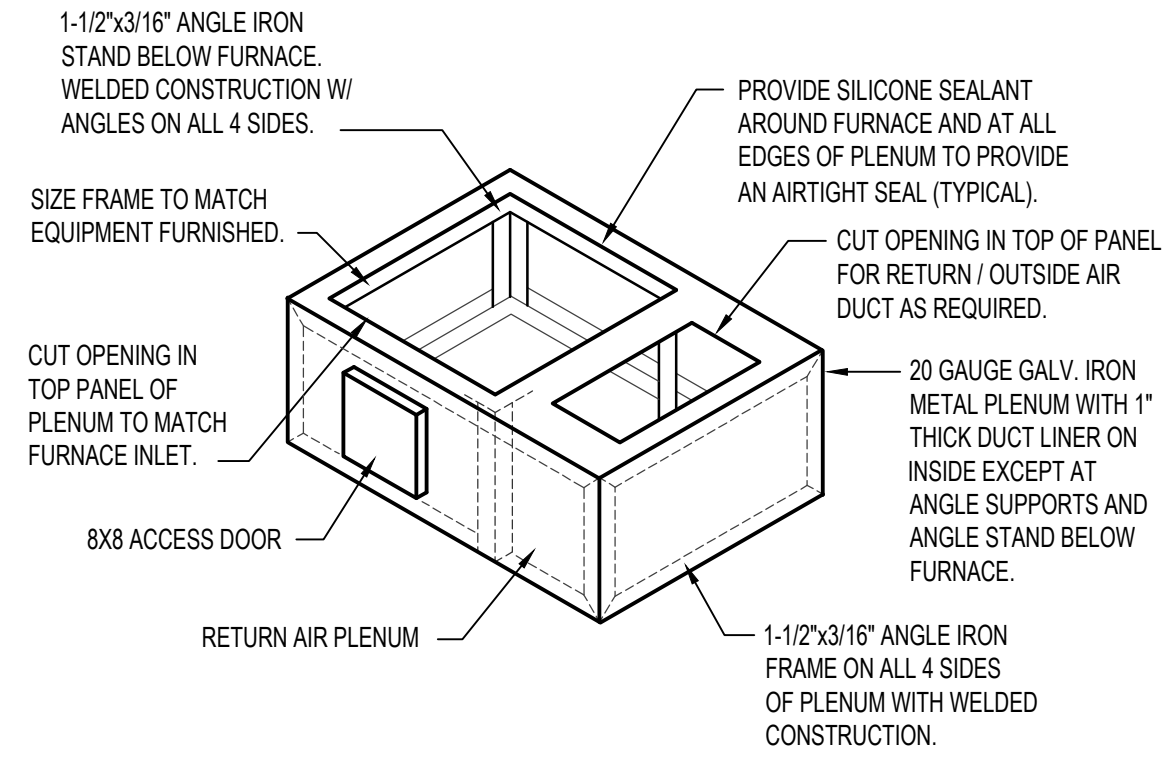
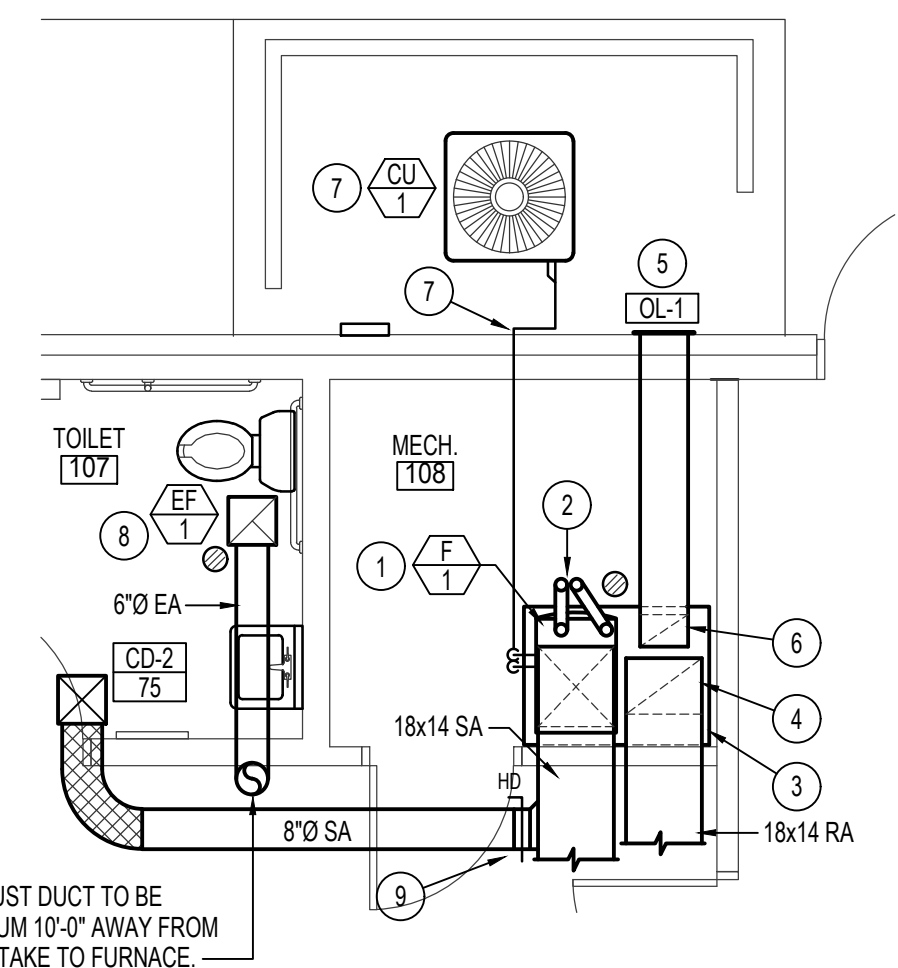


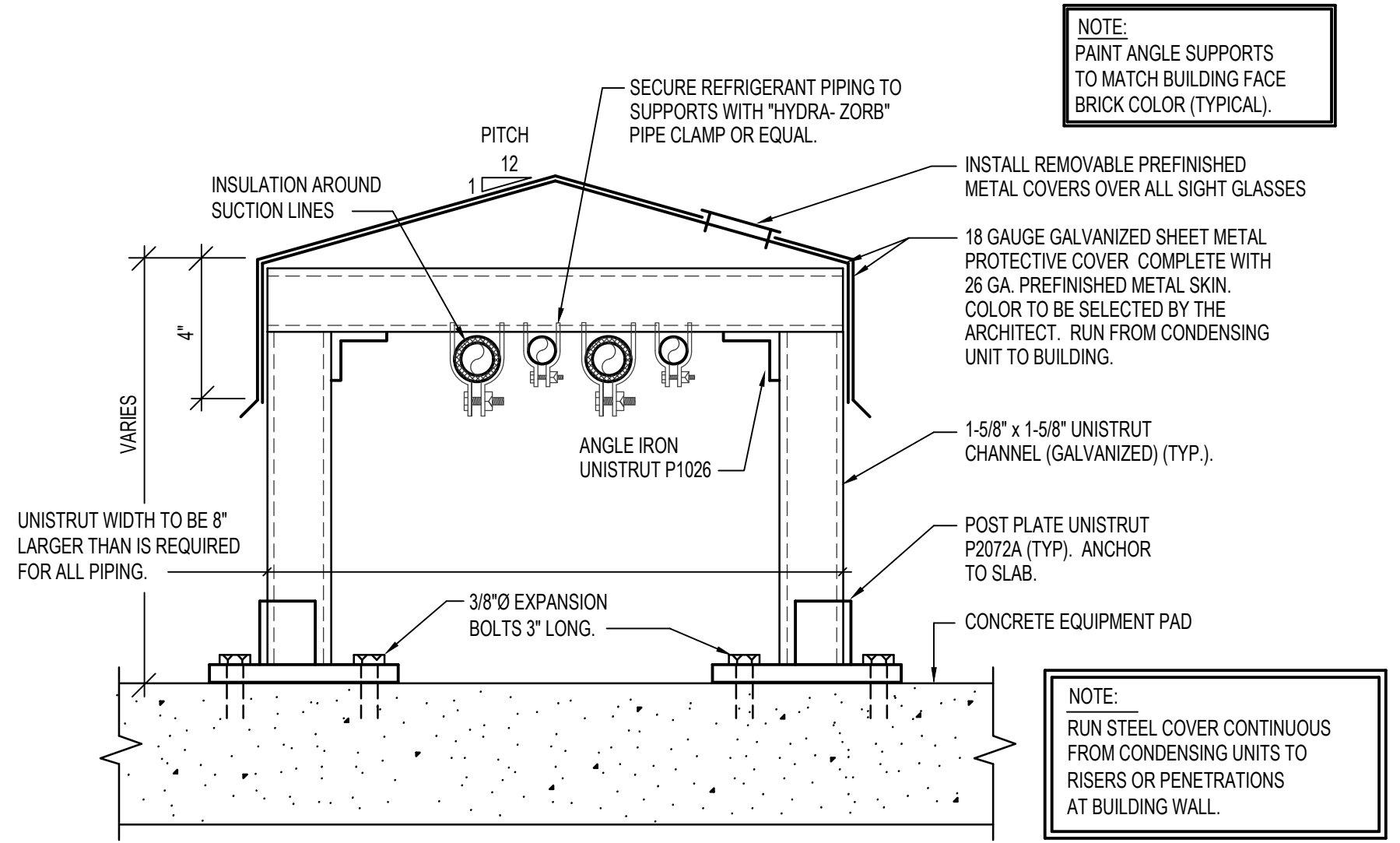
**A CONCENTRIC VENT TERMINATION DETAIL**  
NO SCALE



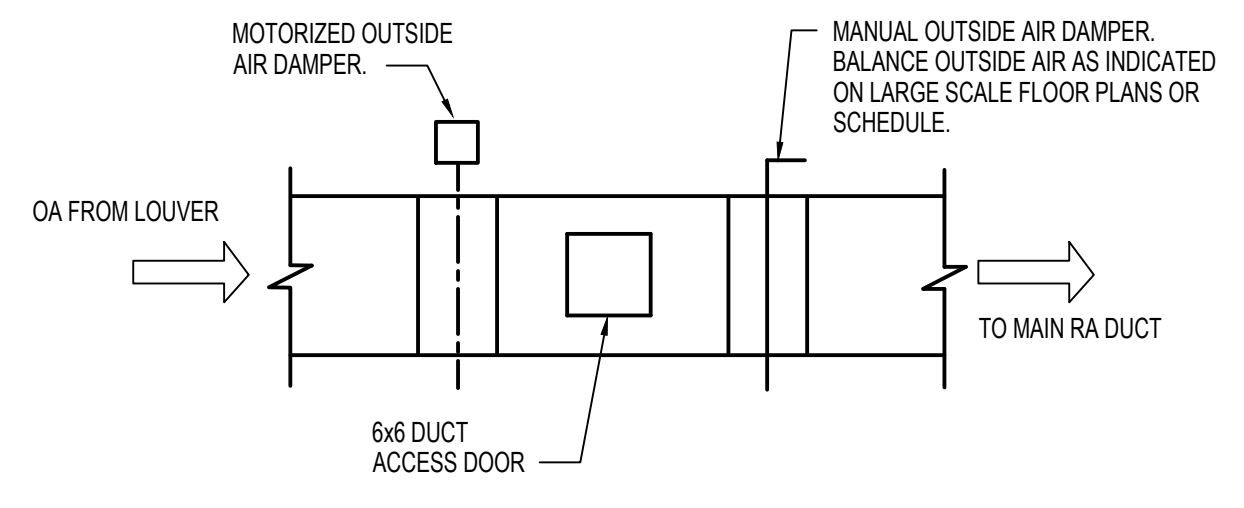
**B RETURN AIR PLENUM DETAIL**  
NO SCALE



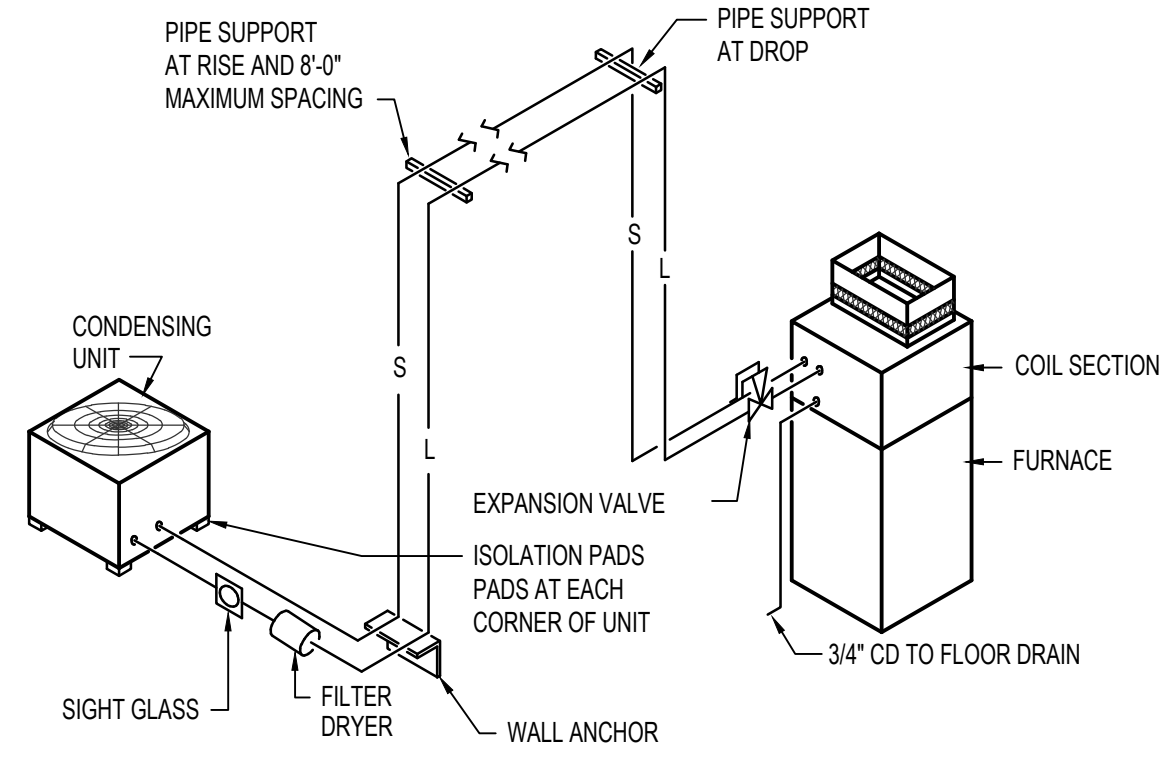
**LARGE SCALE MECHANICAL ROOM**  
SCALE: 1/4" = 1'-0"  
North



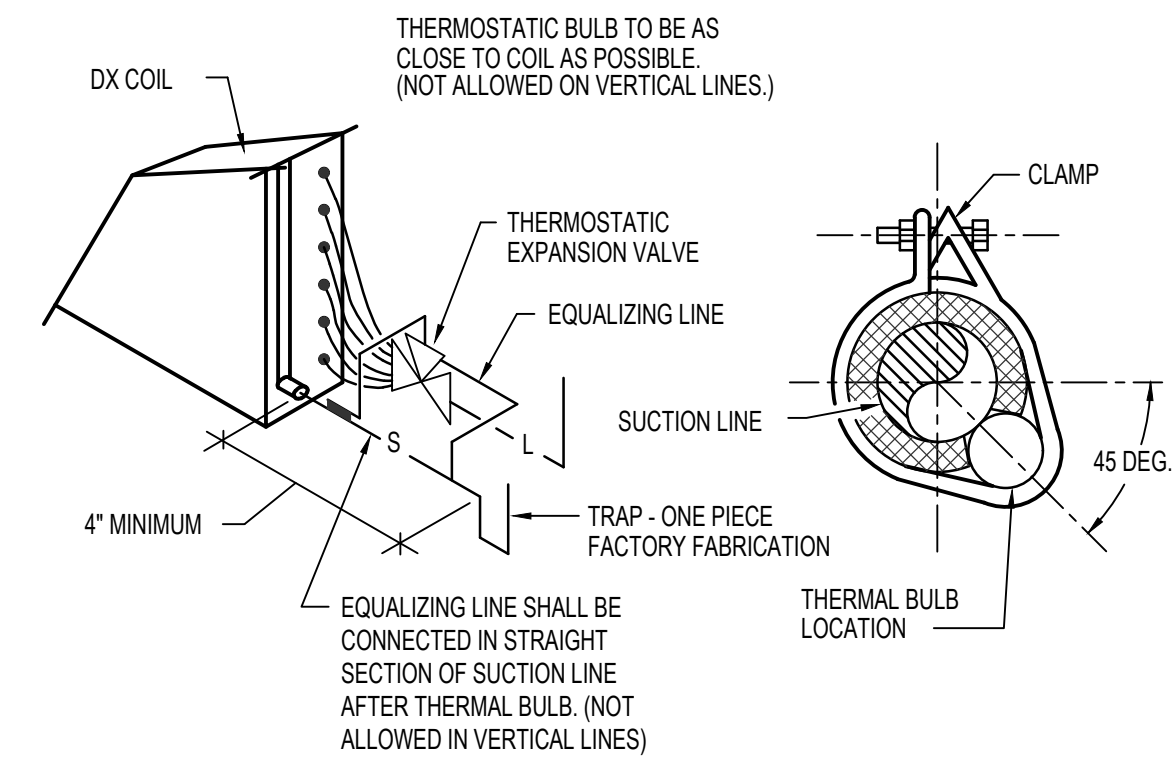
**D REFRIGERANT PIPE SUPPORT DETAIL**  
NO SCALE



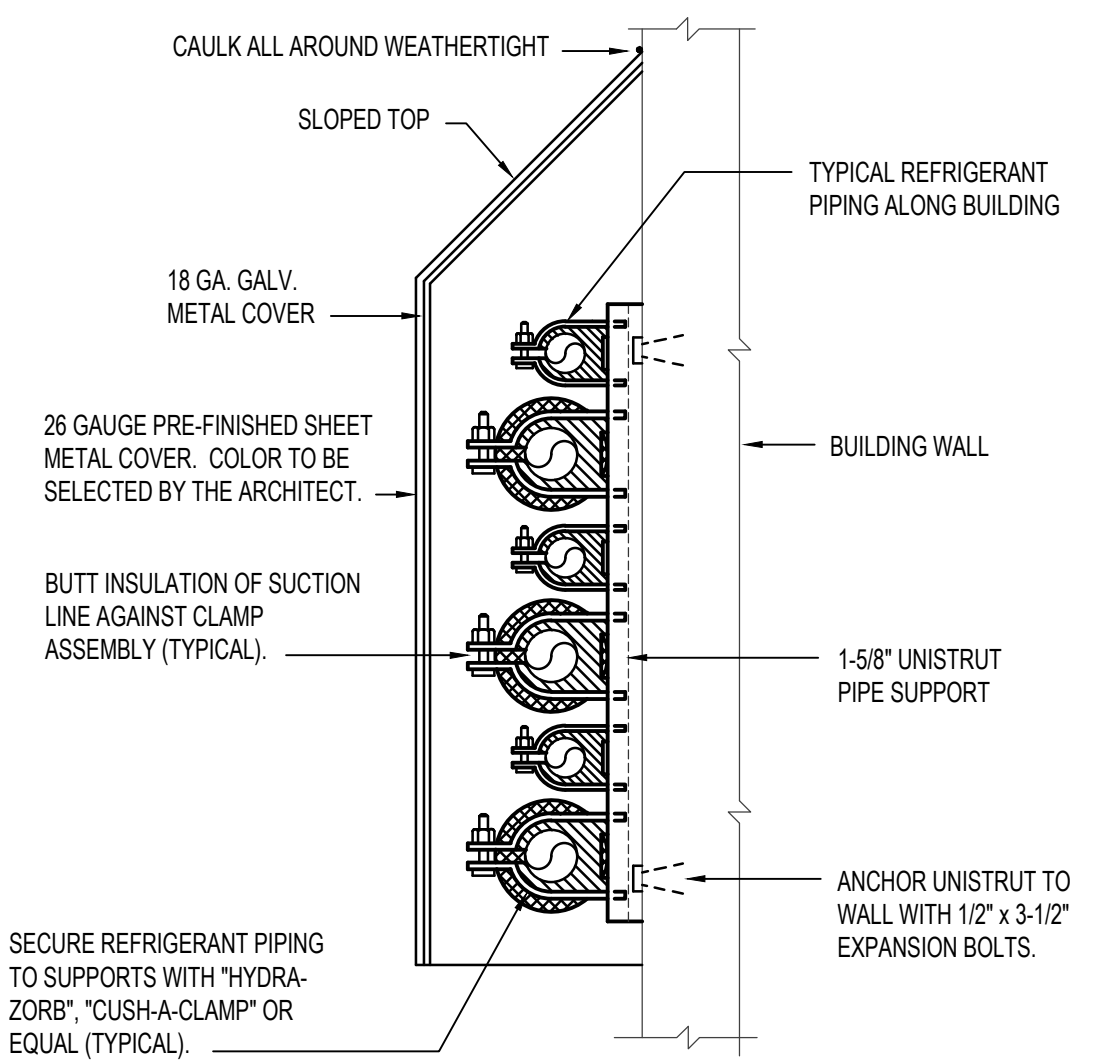
**C TYPICAL OUTSIDE AIR DUCT DETAIL**  
NO SCALE



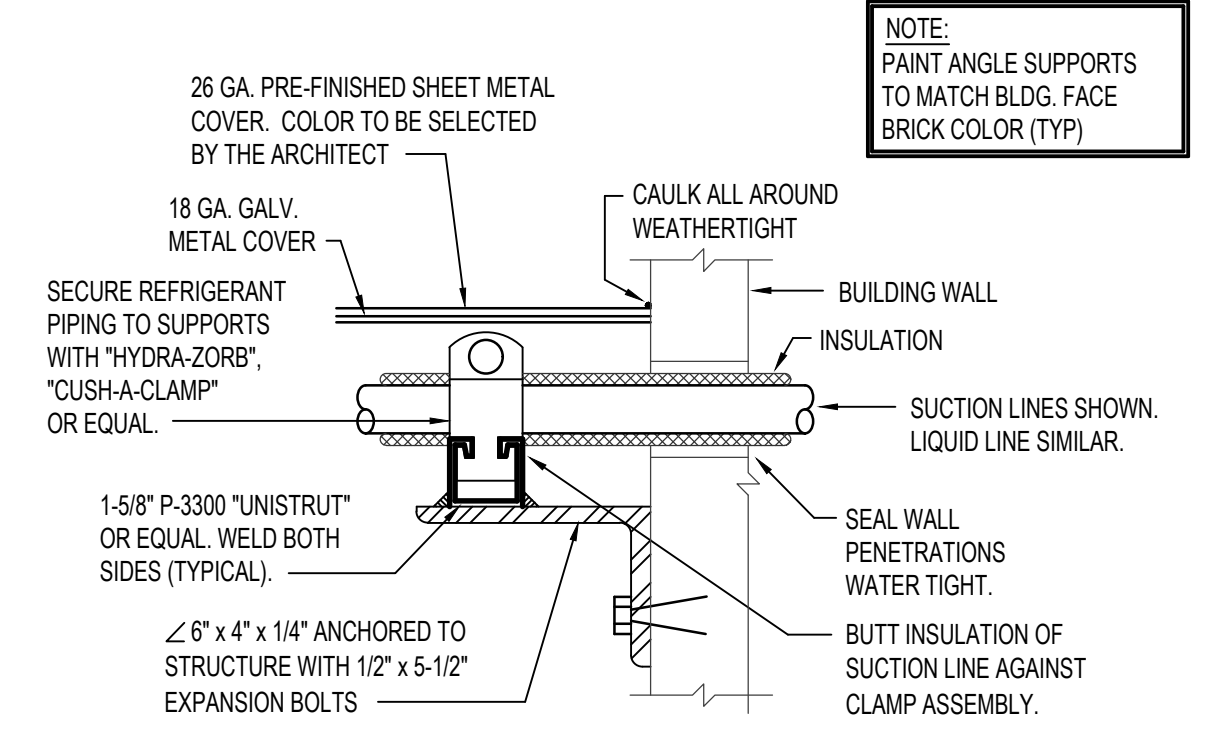
**E REFRIGERANT PIPING DIAGRAM**  
NO SCALE



**F REFRIGERANT COIL CONNECTION DETAIL**  
NO SCALE



**G PIPE SUPPORT ALONG BUILDING**  
NO SCALE



**H REFRIG. PIPING SUPPORT AT WALL**  
NO SCALE

**PLAN NOTES:**

- PROVIDE AND INSTALL GAS FIRED FURNACE COMPLETE WITH MATCHING DX COIL AS SPECIFIED. MOUNT UNIT ON 14" HIGH PLENUM BASE. PROVIDE EXTERNAL FILTER SECTION BELOW FURNACE. REFER TO DETAIL GM202 FOR TYPICAL FILTER SECTION.
- RISE (2) 3/8" PVC FURNACE VENTS UP THRU ROOF WITH CONCENTRIC FITTING. REFER TO DETAIL AM201 FOR TYPICAL VENTS THRU ROOF INSTALLATION.
- MOUNT FURNACE ON 14" HIGH RETURN AIR PLENUM. PROVIDE OPENINGS IN TOP OF PLENUM TO MATCH FULL OPENING OF FURNACE. REFER TO DETAIL BM201 FOR TYPICAL PLENUM CONSTRUCTION.
- DROP 18x14 RETURN AIR DUCT DOWN AND CONNECT TO TOP OF RETURN PLENUM. SEAL AIR TIGHT.
- PROVIDE OUTSIDE AIR LOUVER IN WALL AS SPECIFIED. MOUNT LOUVER AS HIGH AS POSSIBLE AND PROVIDE SLEEVE THRU WALL AS REQUIRED.
- DROP 10x8 OUTSIDE AIR DUCT DOWN AND CONNECT TO TOP OF RETURN AIR PLENUM. PROVIDE MANUAL BALANCING DAMPER, DUCT ACCESS DOOR AND MOTORIZED DAMPER IN OUTSIDE AIR DUCT. BALANCE TO 200 MAXIMUM CFM. REFER TO DETAIL CM201 FOR TYPICAL DAMPER INSTALLATION.
- PROVIDE CONDENSING UNIT AS SPECIFIED. MOUNT UNIT ON 1" THICK NEOPRENE PADS UNDER EACH CORNER. RUN REFRIGERANT PIPING THRU EXTERIOR WALL AND RISE UP TO CONNECT TO DX COOLING COIL. REFER TO DETAIL HM201 FOR WALL PENETRATION AND TO DETAIL EM201 FOR TYPICAL PIPING CONNECTIONS. PROVIDE SHEET METAL COVERS OVER ALL EXTERNALLY EXPOSED REFRIGERANT LINES. COLOR OF PRE-FINISHED COVER TO BE SELECTED BY ARCHITECT.
- PROVIDE AND INSTALL CEILING MOUNTED EXHAUST FAN AS SPECIFIED. RISE 6" DUCT UP THRU ROOF WITH ROOF CAP TO MATCH SLOPING ROOF. SEE DETAIL HM202 FOR TYPICAL INSTALLATION.
- ALL SUPPLY DUCT TAKE-OFFS TO BE HIGH EFFICIENCY TYPE FITTINGS. REFER TO SPECIFICATIONS. SEE DETAIL CM202.

**Engineered Systems Associates**  
1355 EAST CENTER  
POCATELLO, IDAHO 83201  
PHONE: (208) 233-0501  
FAX: (208) 233-0529  
EMAIL: esa@engsystems.com  
ESA JOB NUMBER: 21026

Architect / Engineer:  
**GENE C. ULMER ARCHITECT**  
1506 S. SECRETARIAT WAY  
Nampa, ID 83686  
(208) 899-0874 \* ulmergc@gmail.com

Date: June 22, 2021  
Stamp:

Nampa ID Ridgevue  
Stake Suite Addition  
Nampa ID Ridgevue Stake  
18463 Northside Boulevard  
Nampa, Idaho 83687

Project for:  
**THE CHURCH OF JESUS CHRIST OF LATTER-DAY SAINTS**

Mark	Date (m.d.y)	Description

Project Number:  
**22112**  
Plan Series:  
**HER-98**  
Property Number:  
**581027220030101**

Sheet Title:  
**LARGE SCALE MECHANICAL ROOM AND DETAILS**

Sheet:  
**M201**