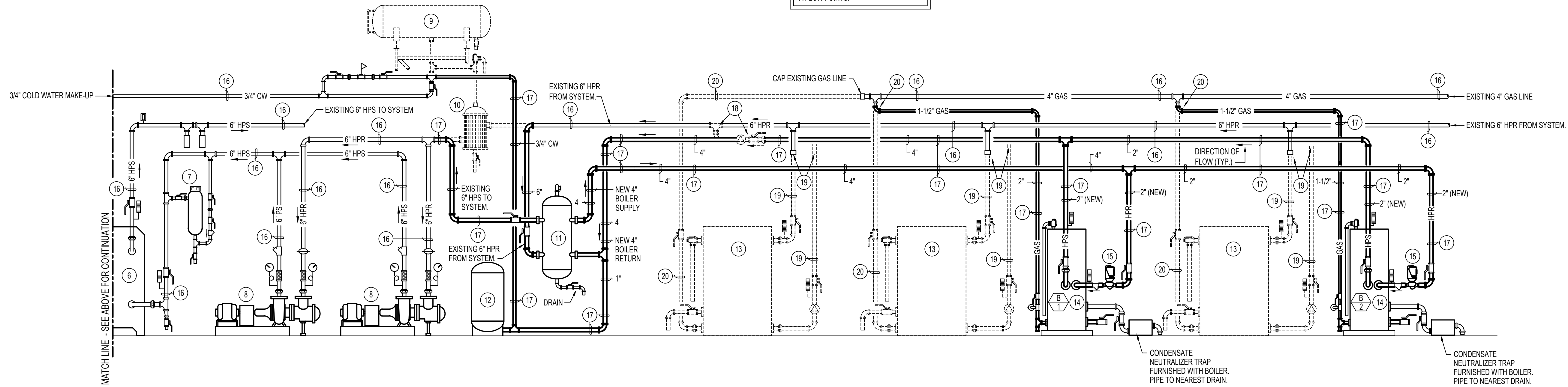


NOTE:
 PIPING TO BE GRADED UP IN
 DIRECTION OF FLOW WITH
 AUTOMATIC AIR VALVE AT HIGH
 POINTS AND HOSE DRAINS
 AT LOW POINTS.



BOILER PIPING DIAGRAM
 NO SCALE

| EQUIPMENT LIST AND NOTES | |
|--------------------------|---|
| SYMBOL | DESCRIPTION |
| 1 | EXISTING WATER SERVICE TO BUILDING AND PRV VALVE TO REMAIN. PROTECT EQUIPMENT AND PIPING DURING CONSTRUCTION. |
| 2 | EXISTING COOLING TOWER CHEMICAL FEED TANK AND PUMP TO REMAIN. PROTECT EQUIPMENT AND PIPING DURING CONSTRUCTION. |
| 3 | EXISTING COOLING TOWER SUMP TO REMAIN. PROTECT EQUIPMENT AND PIPING DURING CONSTRUCTION. |
| 4 | EXISTING COOLING TOWER CIRCULATING PUMP TO REMAIN. PROTECT EQUIPMENT AND PIPING DURING CONSTRUCTION. |
| 5 | EXISTING COOLING TOWER AT GRADE LEVEL TO REMAIN. PROTECT EQUIPMENT AND PIPING DURING CONSTRUCTION. |
| 6 | EXISTING PLATE HEAT EXCHANGER TO REMAIN. PROTECT EQUIPMENT AND PIPING DURING CONSTRUCTION. |
| 7 | EXISTING HEAT PUMP SYSTEM CHEMICAL FEED TANK TO REMAIN. PROTECT EQUIPMENT AND PIPING DURING CONSTRUCTION. |
| 8 | EXISTING HEAT PUMP CIRCULATING PUMP TO REMAIN. PROTECT EQUIPMENT AND PIPING DURING CONSTRUCTION. |
| 9 | DISCONNECT AND REMOVE EXISTING HORIZONTAL EXPANSION TANK. RECONNECT EXISTING COLD WATER PIPING TO NEW TANK AS SHOWN IN DIAGRAM. |
| 10 | EXISTING 6\"/> |
| 11 | NEW LOW LOSS HEADER SIMILAR TO SPIROTHERM 'SPIROVENTQUAD' VDX600FA COMPLETE WITH AIR VENT AND DRAIN VALVE. |
| 12 | NEW AMTROL EXTROL SX160V DIAPHRAGM EXPANSION TANK WITH DRAIN VALVE. SET ON FLOOR. RUN DRAIN LINE TO NEAREST FLOOR DRAIN. |
| 13 | EXISTING CONDENSING BOILER TO BE DISCONNECTED AND REMOVED. REMOVE ALL CONTROLS, GAS PIPING, AND HEAT PUMP PIPING TO EXISTING BOILER. |
| 14 | NEW CONDENSING BOILER AS SPECIFIED. CONNECT TO EXISTING HEAT PUMP AND GAS PIPING AND TO NEW LOW LOSS HEADER AS SHOWN. |
| 15 | FACTORY SUPPLIED BOILER CIRCULATING PUMP. CONNECT NEW 2\"/> |
| 16 | EXISTING PIPING TO REMAIN. PROTECT DURING CONSTRUCTION AND MAINTAIN CONNECT TO EXISTING EQUIPMENT AND VALVES. |
| 17 | PROVIDE AND INSTALL NEW PIPING AS SHOWN. CONTRACTOR TO FIELD VERIFY EXISTING PIPING MATERIALS AND CONNECTIONS. PROVIDE NEW TO MATCH EXISTING. |
| 18 | DISCONNECT AND REMOVE EXISTING BY PASS VALVE AND CIRCUIT SETTER. PROVIDE NEW PIPE LENGTH AS REQUIRED FOR REMOVED FITTINGS AND DEVICES. |
| 19 | DISCONNECT AND REMOVE EXISTING 3\"/> |
| 20 | DISCONNECT AND REMOVE EXISTING 1-1/2\"/> |



Engineered Systems Associates
Mechanical Engineers
 Dwayne Sudweeks
 1355 East Center - Pocatello, Idaho 83201
 Phone: (208) 233-0501 Fax: (208) 233-0529 email: esabengsystems.com

BOILER REPLACEMENT FOR:
POCATELLO HIGH SCHOOL
SCHOOL DISTRICT #25
POCATELLO, IDAHO
 PROJECT:
 SHEET TITLE: **BOILER PIPING DIAGRAM**



| | |
|------------------------|-------------------------|
| DRWN. BY: M. JENSEN | CKD. BY: D. SUDWEEKS |
| JOB NO. 20093 | DATE: FEB. 2021 |

SHEET:
ME-2
 OF: THREE