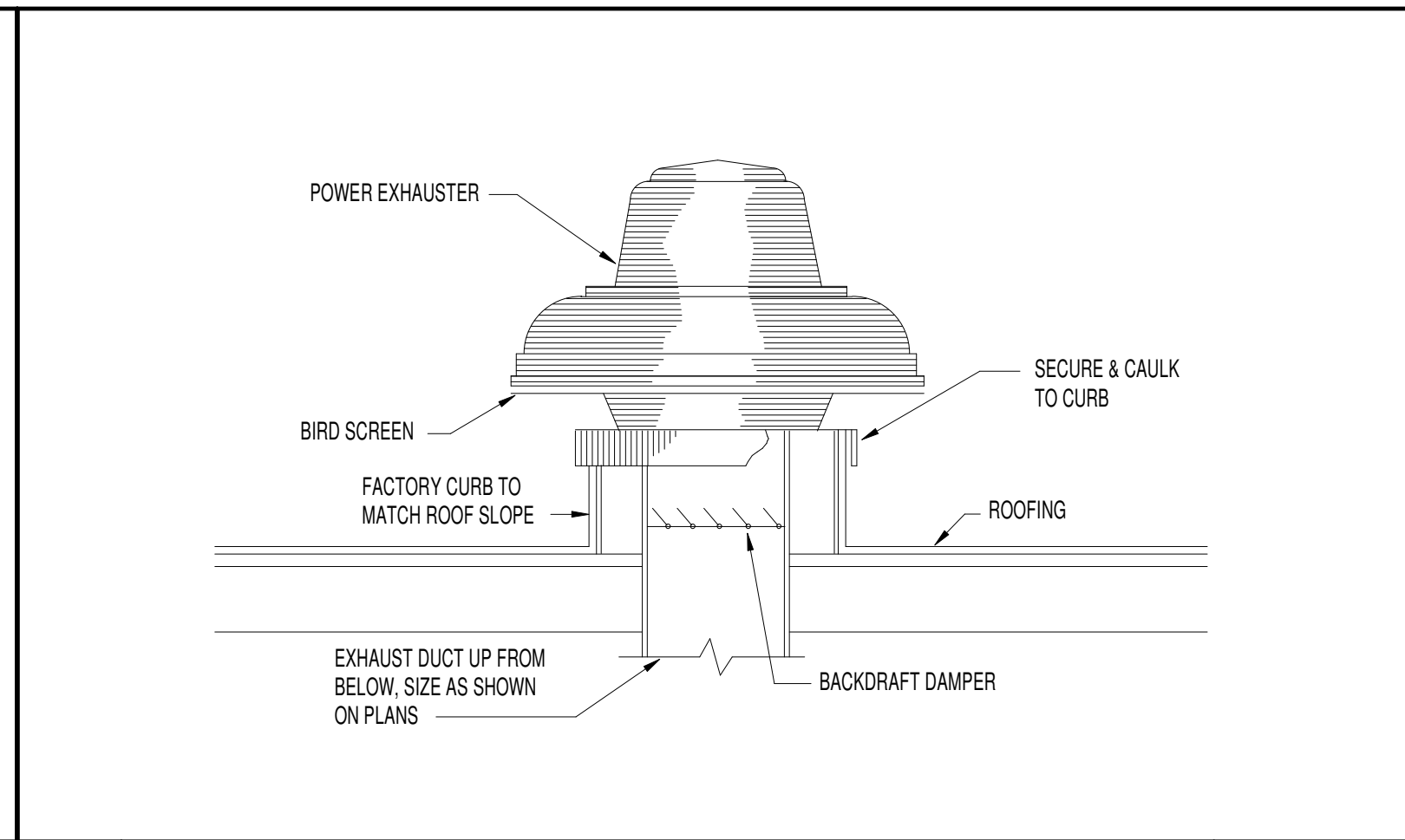
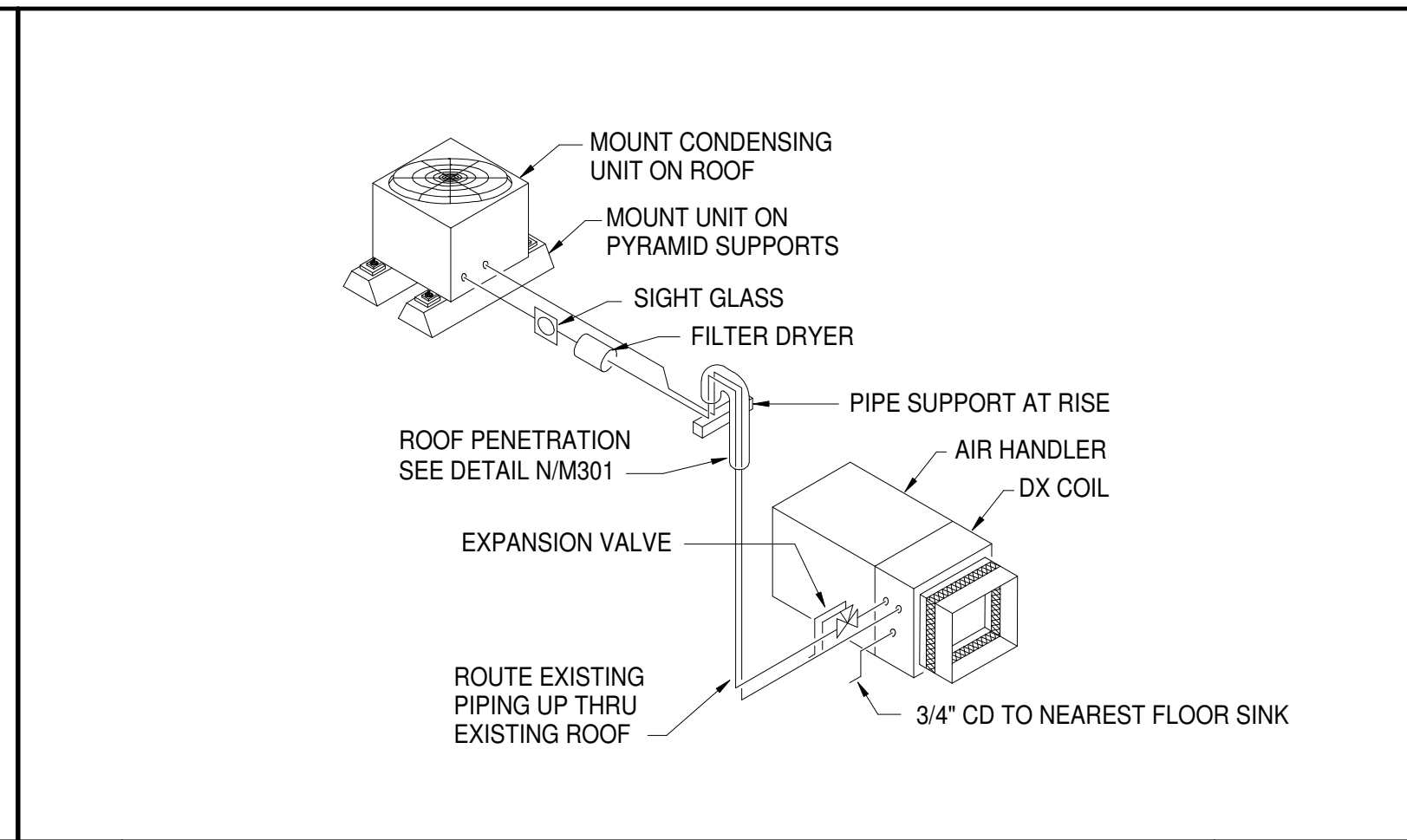


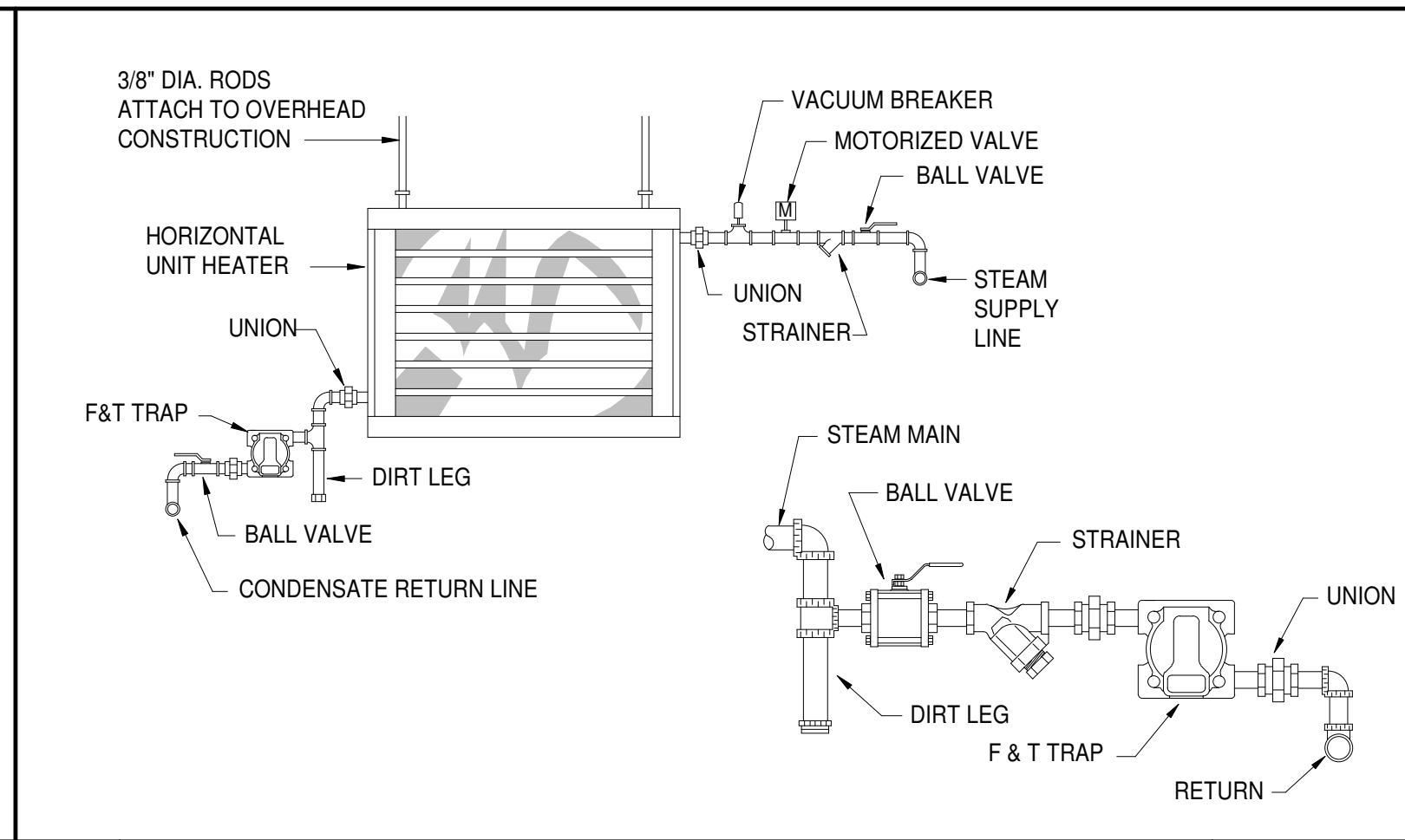
A | CEILING EXHAUST FAN DETAIL NO SCALE



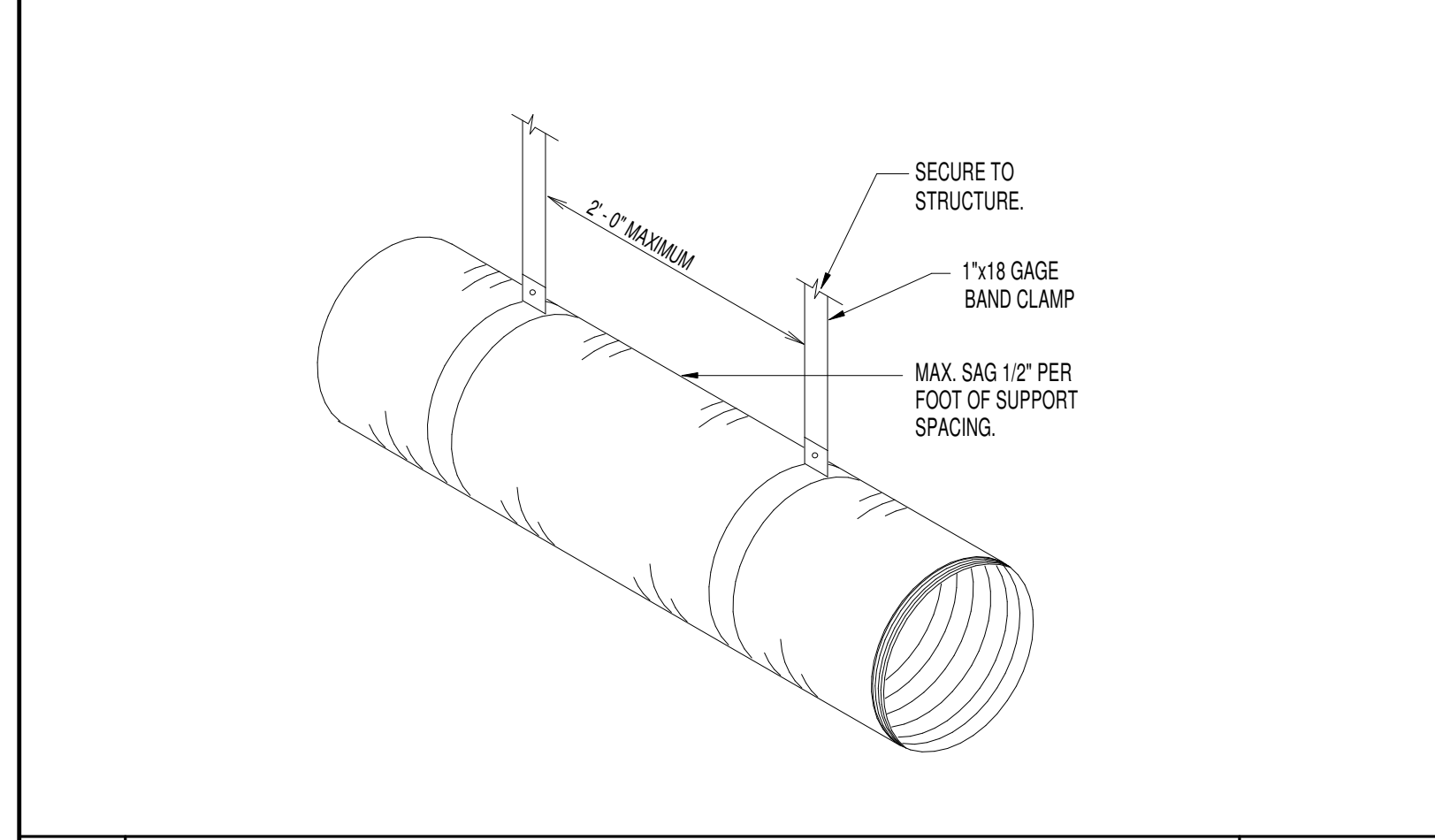
B | ROOF MOUNTED EXHAUST FAN DETAIL NO SCALE



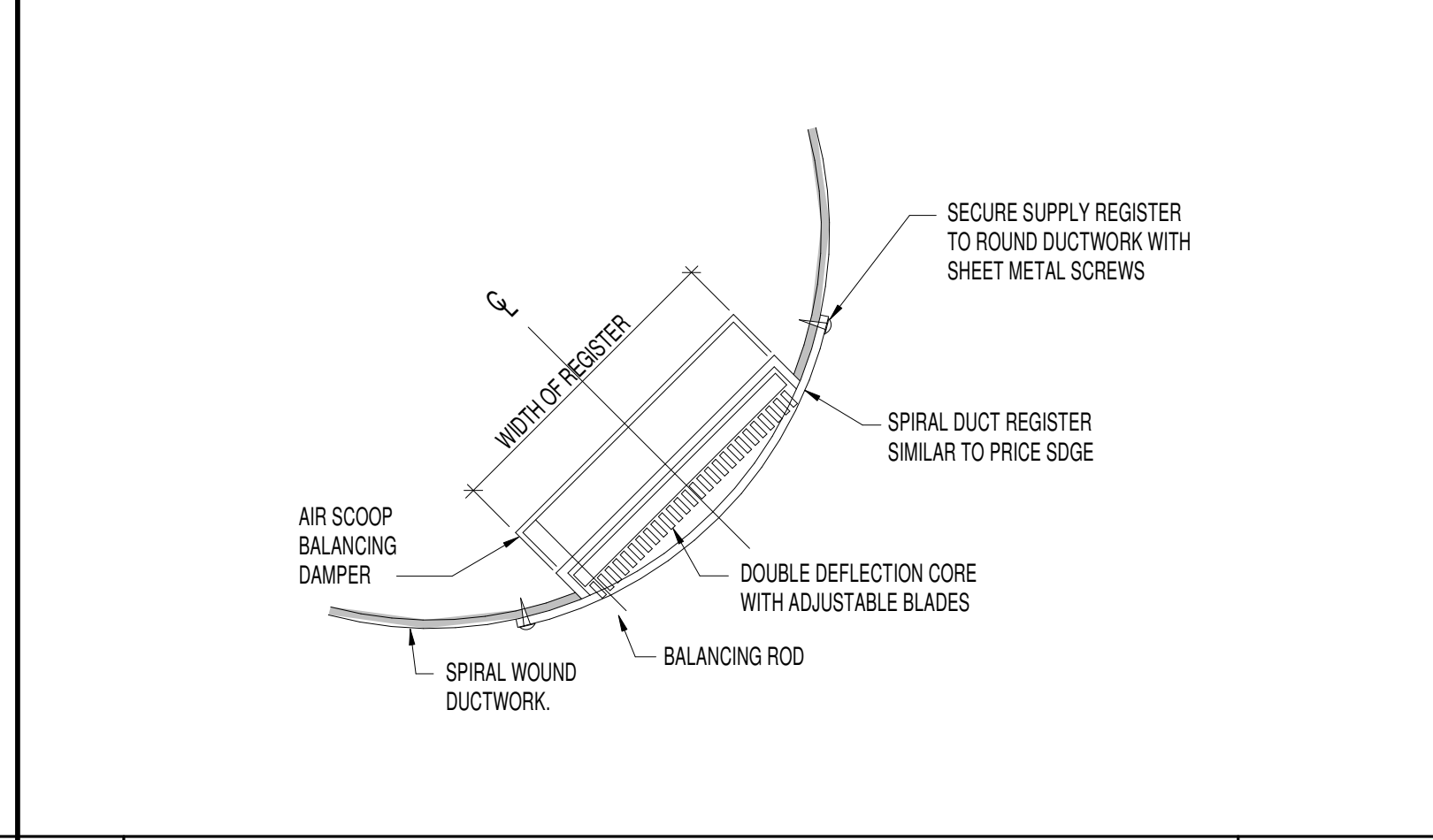
C | REFRIGERANT PIPING DIAGRAM NO SCALE



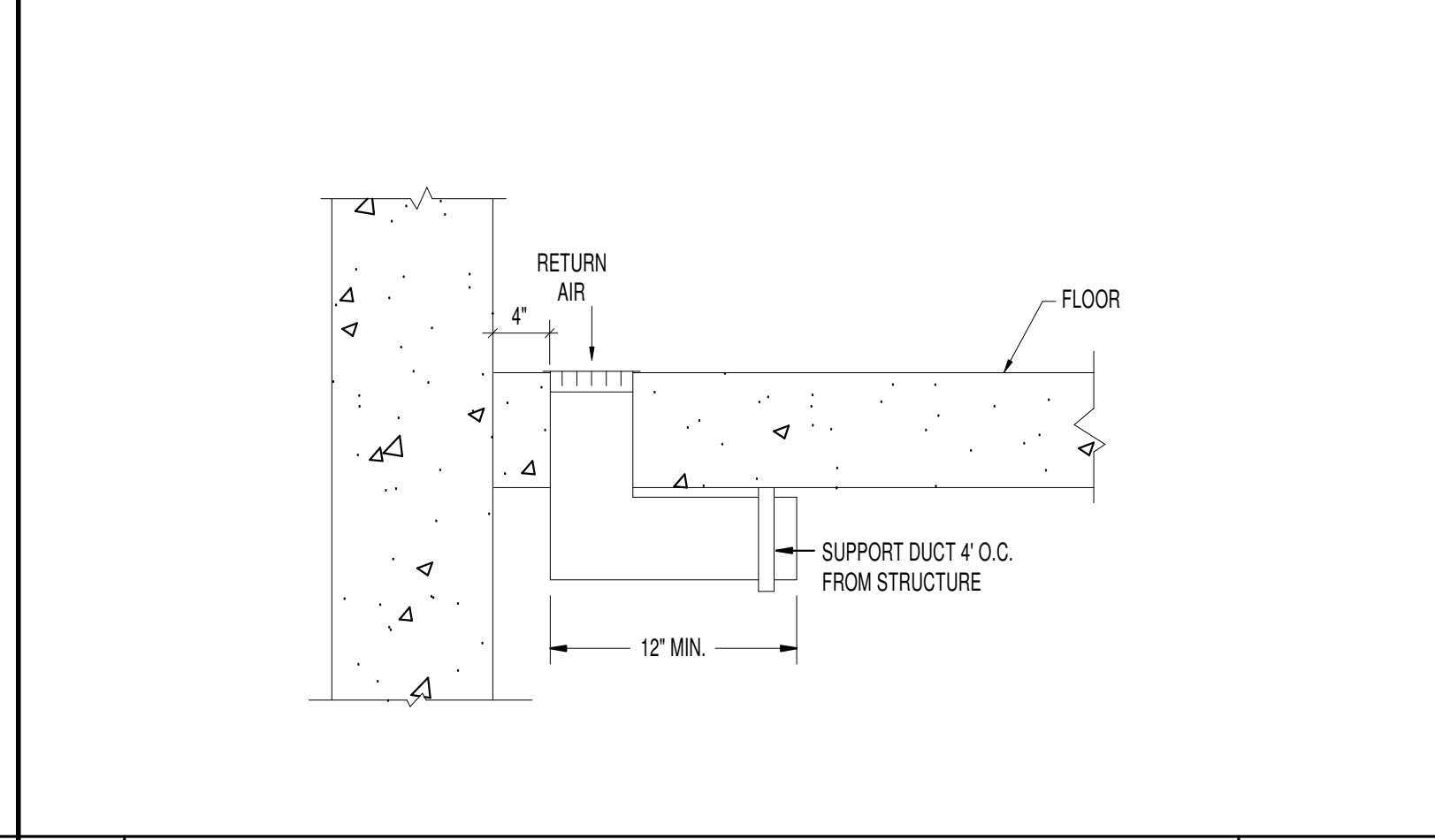
D | STEAM UNIT HEATER AND TRAP DETAIL NO SCALE



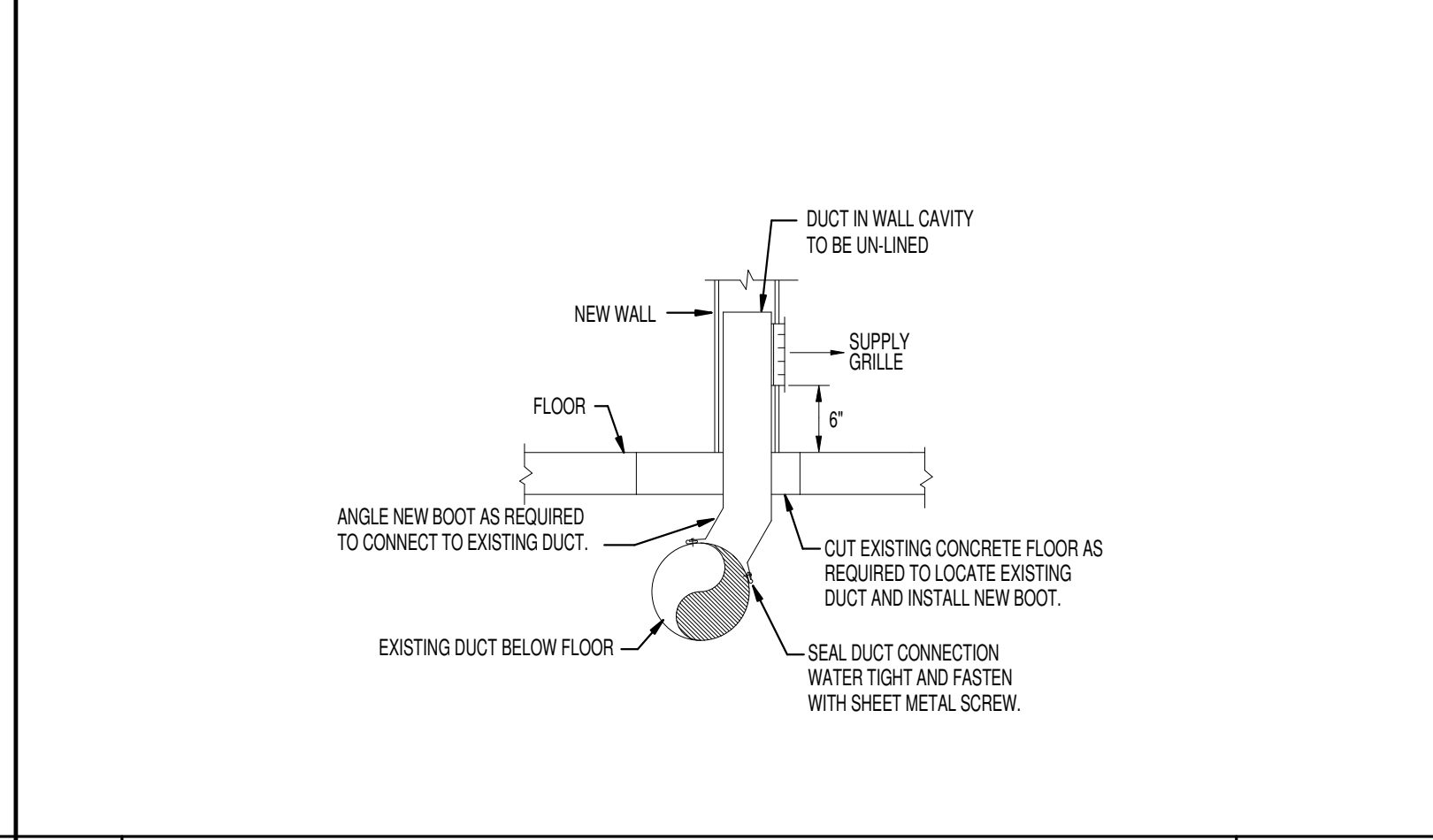
E | FLEXIBLE DUCT SUPPORT DETAIL NO SCALE



F | IN-DUCT REGISTER DETAIL NO SCALE



G | FLOOR GRILLE INSTALLATION DETAIL NO SCALE



H | WALL MOUNTED RETURN AIR GRILLE NO SCALE

DIMENSION OF LONGEST SIDE, INCHES	SHEET METAL GAGE (ALL FOUR SIDES)	TRANSVERSE REINFORCING (1)	
		MINIMUM REINFORCING ANGLE SIZE AND MAXIMUM LONGITUDINAL SPACING BETWEEN TRANSVERSE JOINTS & OR INTERMEDIATE REINFORCING	AT JOINTS
UP THRU 12	26	NONE REQUIRED	26
13 - 18	24	NONE REQUIRED	24
19 - 30	24	1"x1"x18" @ 60 IN	24

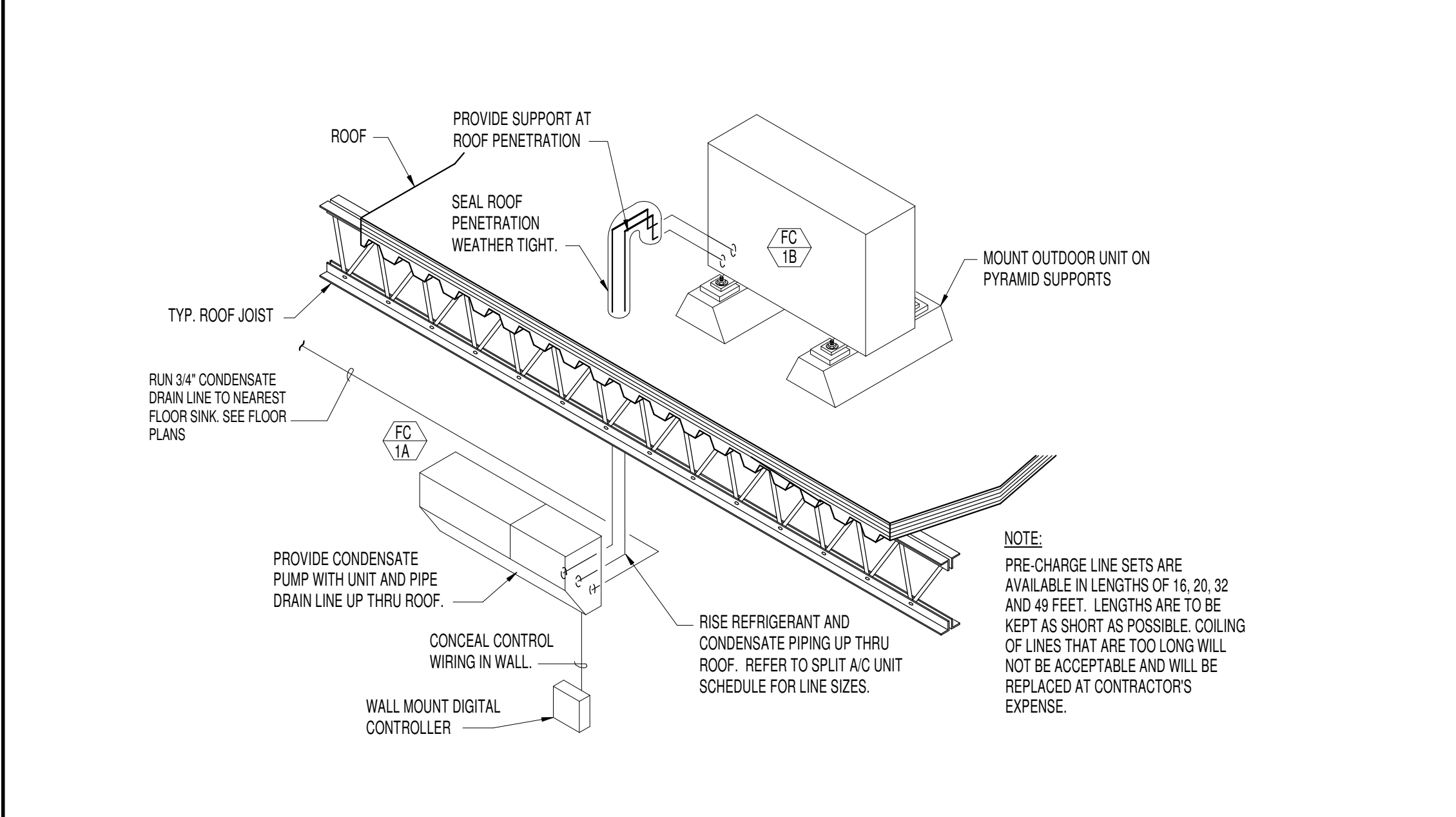
(1) TRANSVERSE REINFORCING SIZE IS DETERMINED BY DIMENSION OF SIDE TO WHICH ANGLE IS APPLIED.

METAL FASTENERS: CHAMK INSULPINS, DURO DRYNE FASTENERS OR GRIPNAILS.

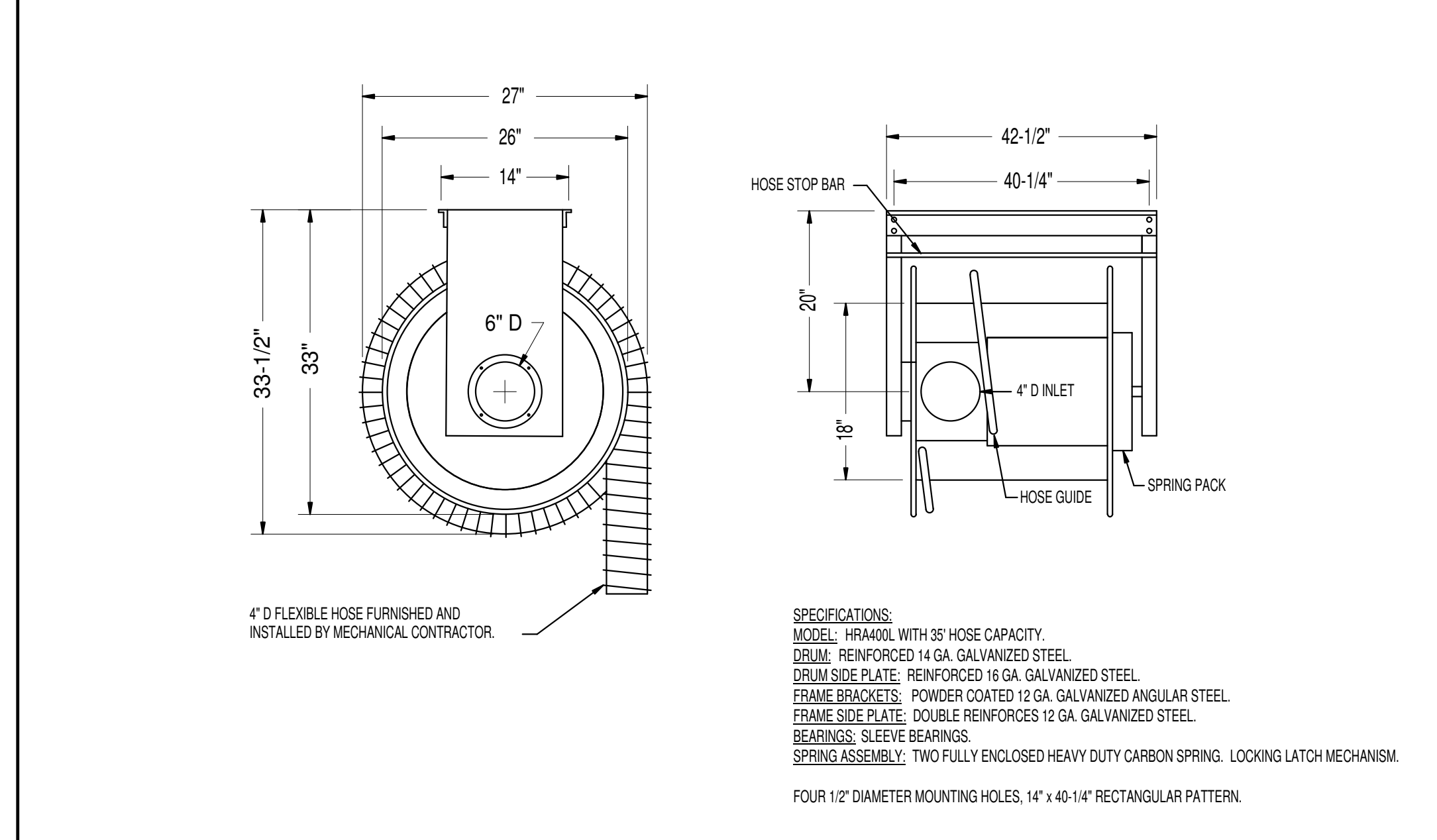
GRIP NAILS SHALL BE INSTALLED BY GRIPNAIL AIR HAMMER OR BY AUTOMATIC FASTENER EQUIP.

ENDS OF LINER SHALL BE BUTTED FIRMLY TOGETHER.

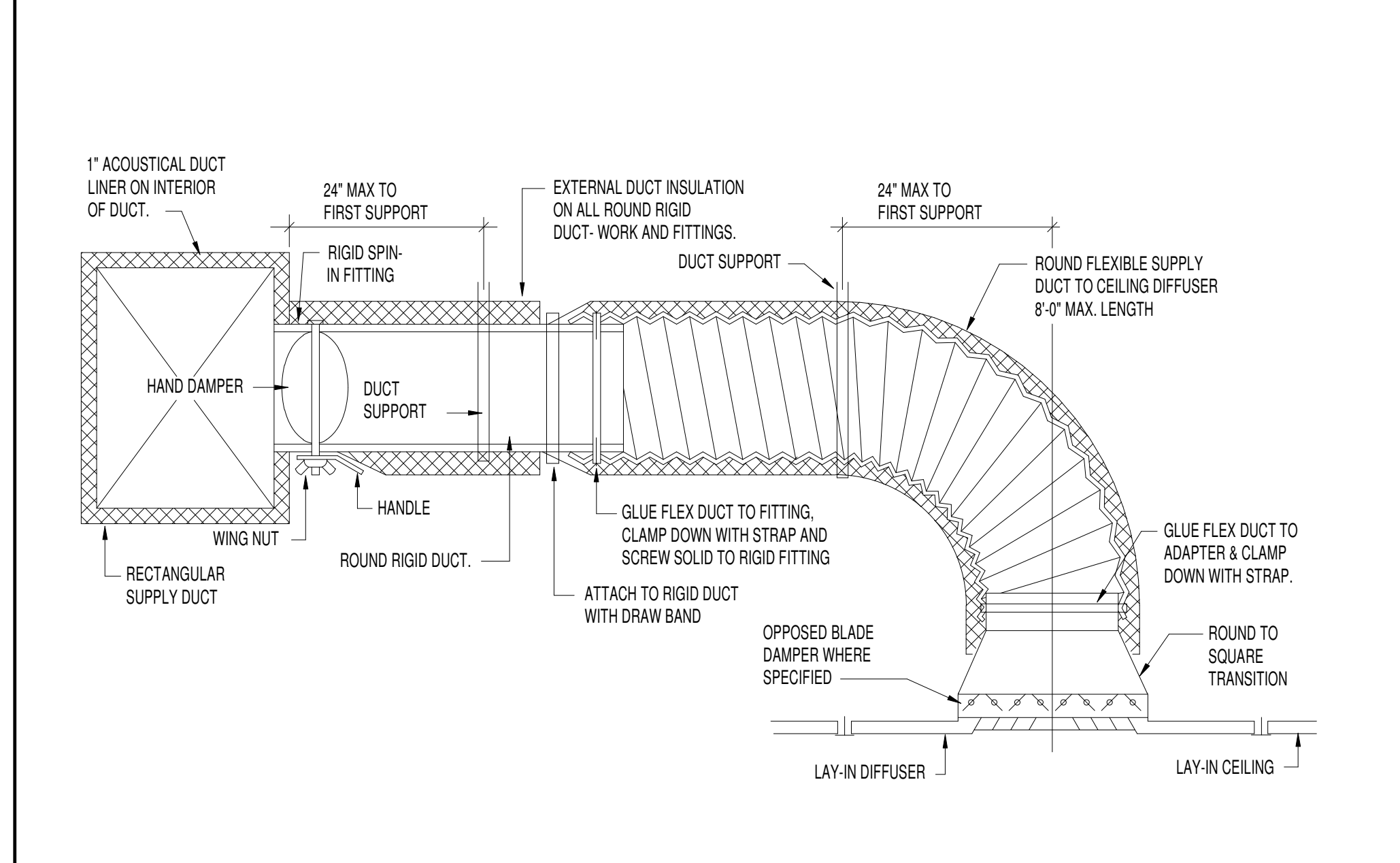
J | DUCT CONSTRUCTION AND HANGER DETAILS NO SCALE



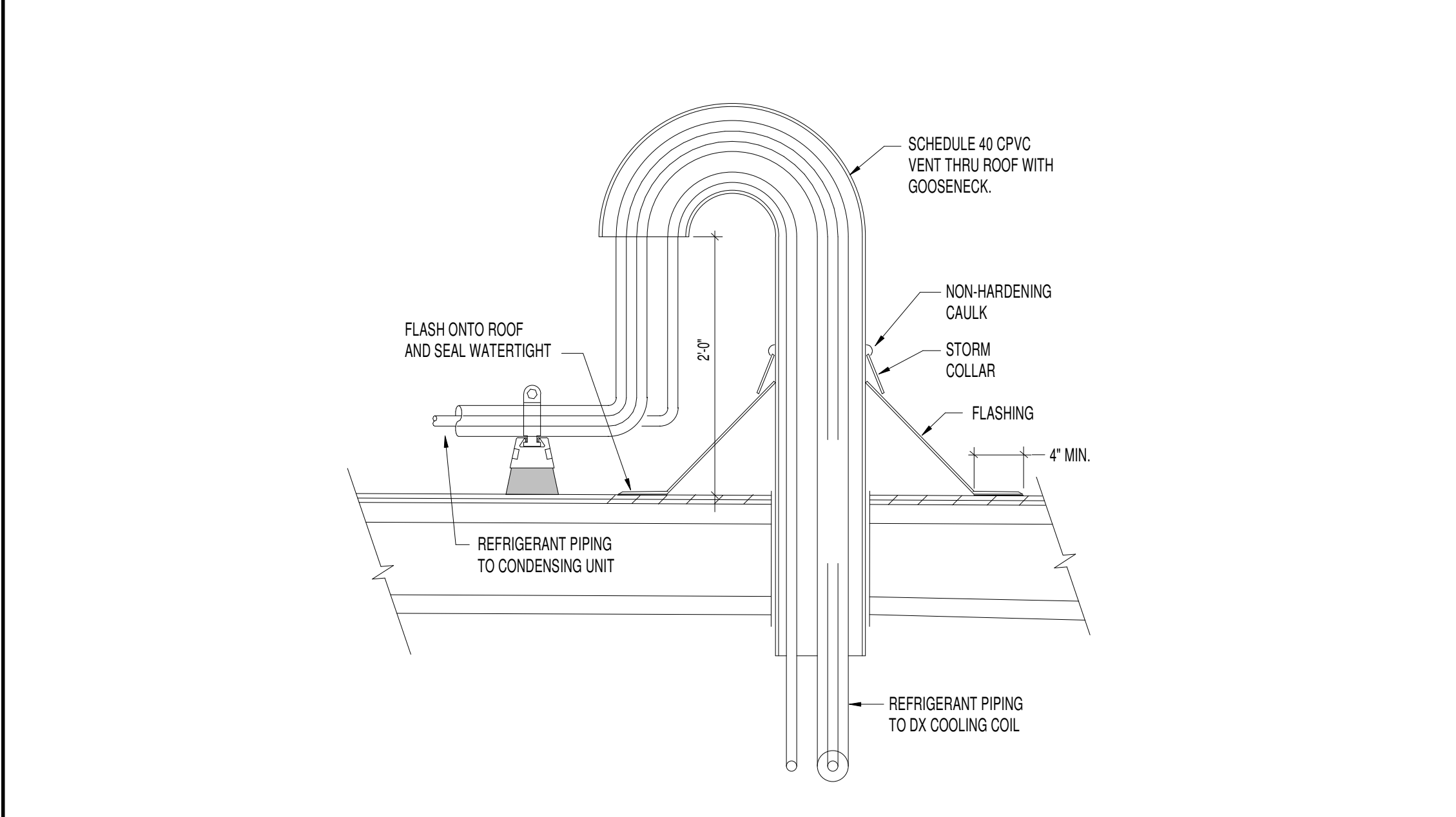
K | REFRIGERANT PIPING DIAGRAM NO SCALE



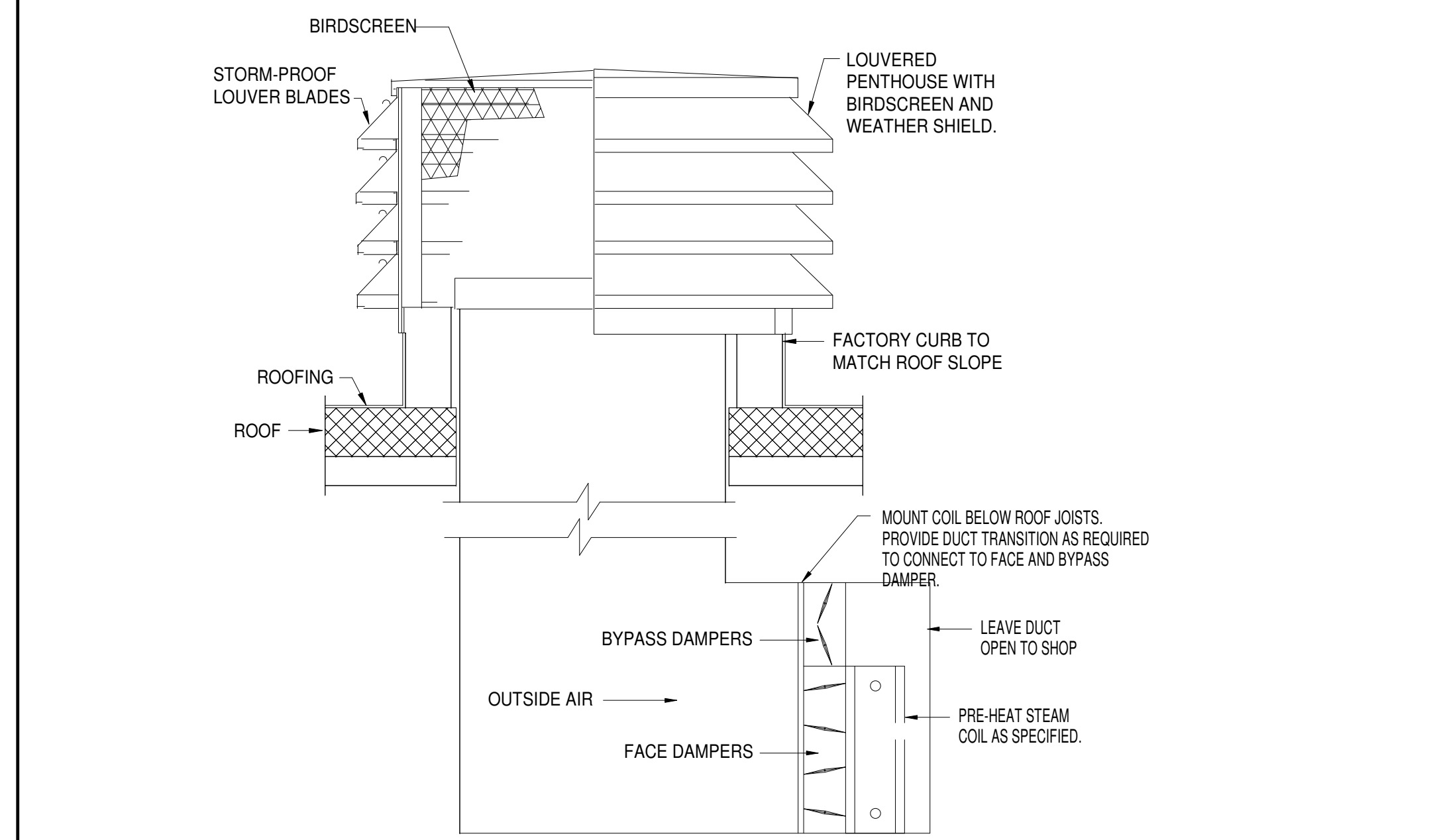
L | CAR EXHAUST HOSE REEL DETAIL NO SCALE



M | CEILING DIFFUSER INSTALLATION DETAIL NO SCALE



N | REFRIGERANT PIPING THRU CEILING DETAIL NO SCALE

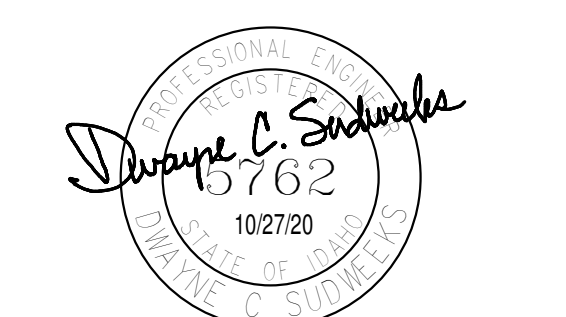


O | MAKE-UP AIR PENTHOUSE WITH BY-PASS DAMPER DETAIL NO SCALE



360 west aspen avenue
 salt lake city, utah 84101
 801 532 4422

UNLESS A PROFESSIONAL SEAL WITH SIGNATURE AND DATE IS AFFIXED, THIS DOCUMENT IS PRELIMINARY AND IS NOT INTENDED FOR CONSTRUCTION, RECORDING PURPOSES, OR IMPLEMENTATION.



Engineered Systems Associates
 ESA JOB NUMBER 20048

THE DESIGNS SHOWN AND DESCRIBED HEREIN INCLUDING ALL TECHNICAL DRAWINGS, GRAPHIC REPRESENTATIONS & MODELS THEREOF, ARE PROPRIETARY & CAN NOT BE COPIED, DUPLICATED, OR COMMERCIALY EXPLOITED IN WHOLE OR IN PART WITHOUT THE SOLE AND EXPRESS WRITTEN PERMISSION FROM METHOD STUDIO INC.

project:
BYUI Engineering Technology Center (ETC)

project#: 20 0220
 byui idaho project#: 12005
 date: oct. 27, 2020

revisions :

title:
MECHANICAL DETAILS

sheet:
M301
 100% construction documents