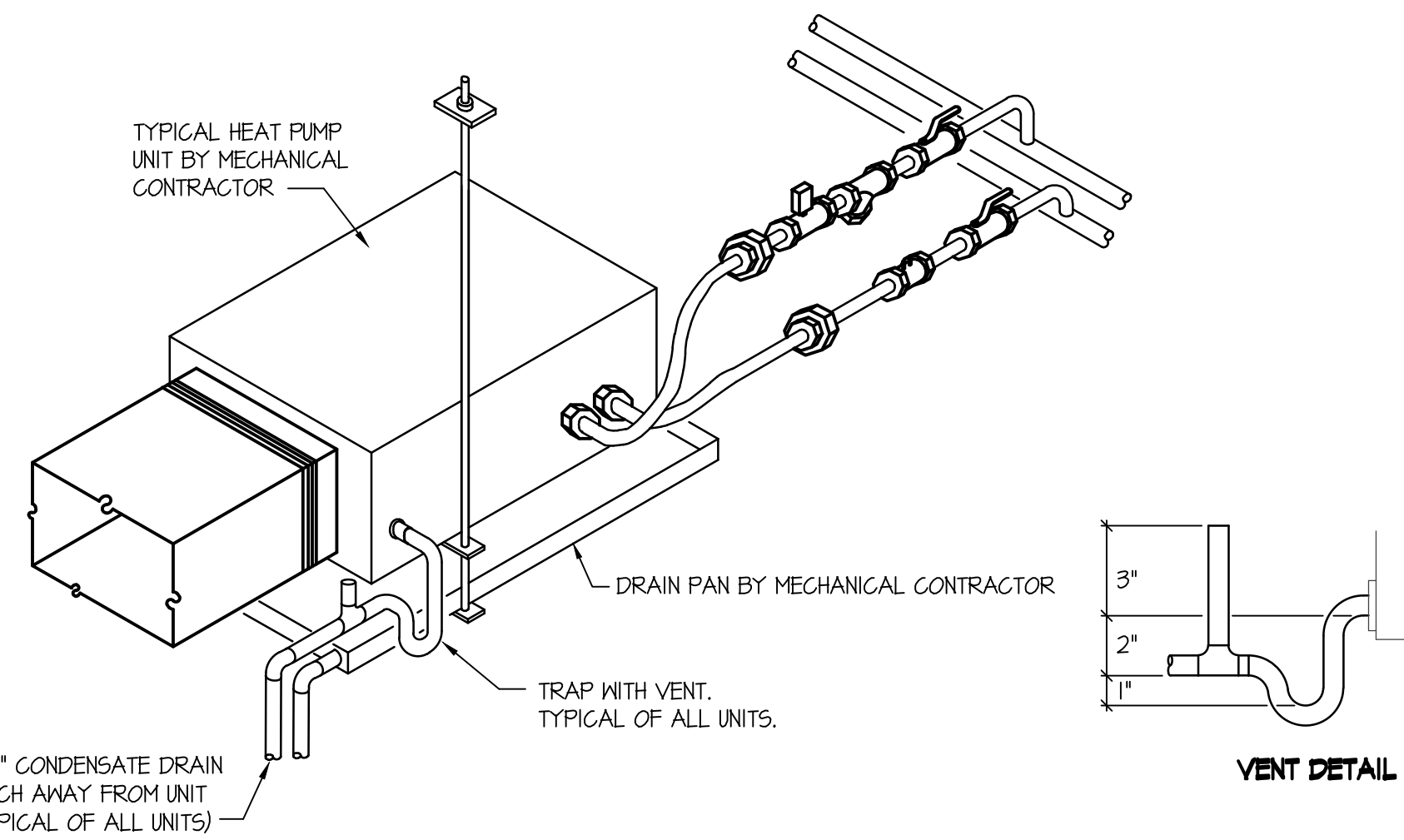


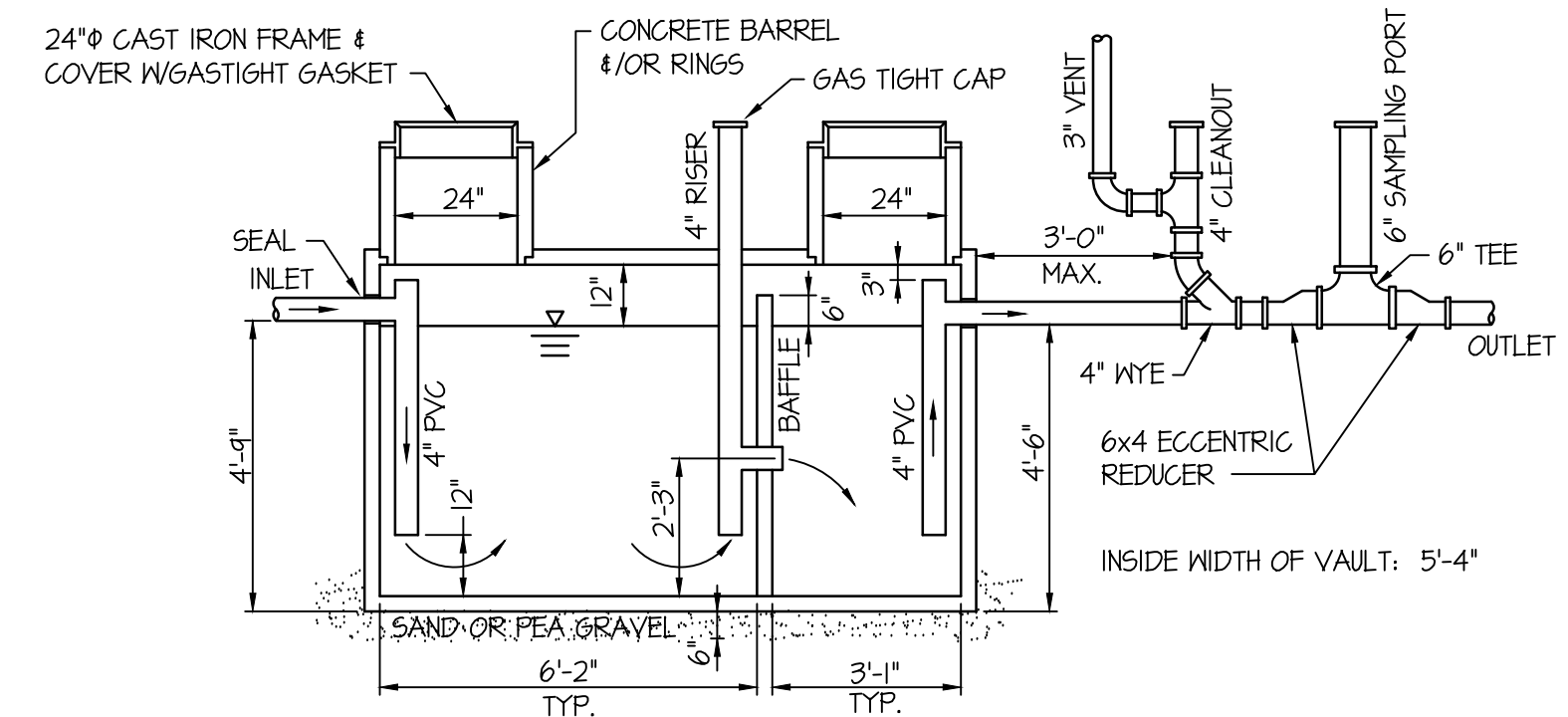
A SINGLE DRAIN TRAP PRIMER DETAIL

NO SCALE



B HEAT PUMP DRAIN LINE CONNECTION DETAIL

NO SCALE

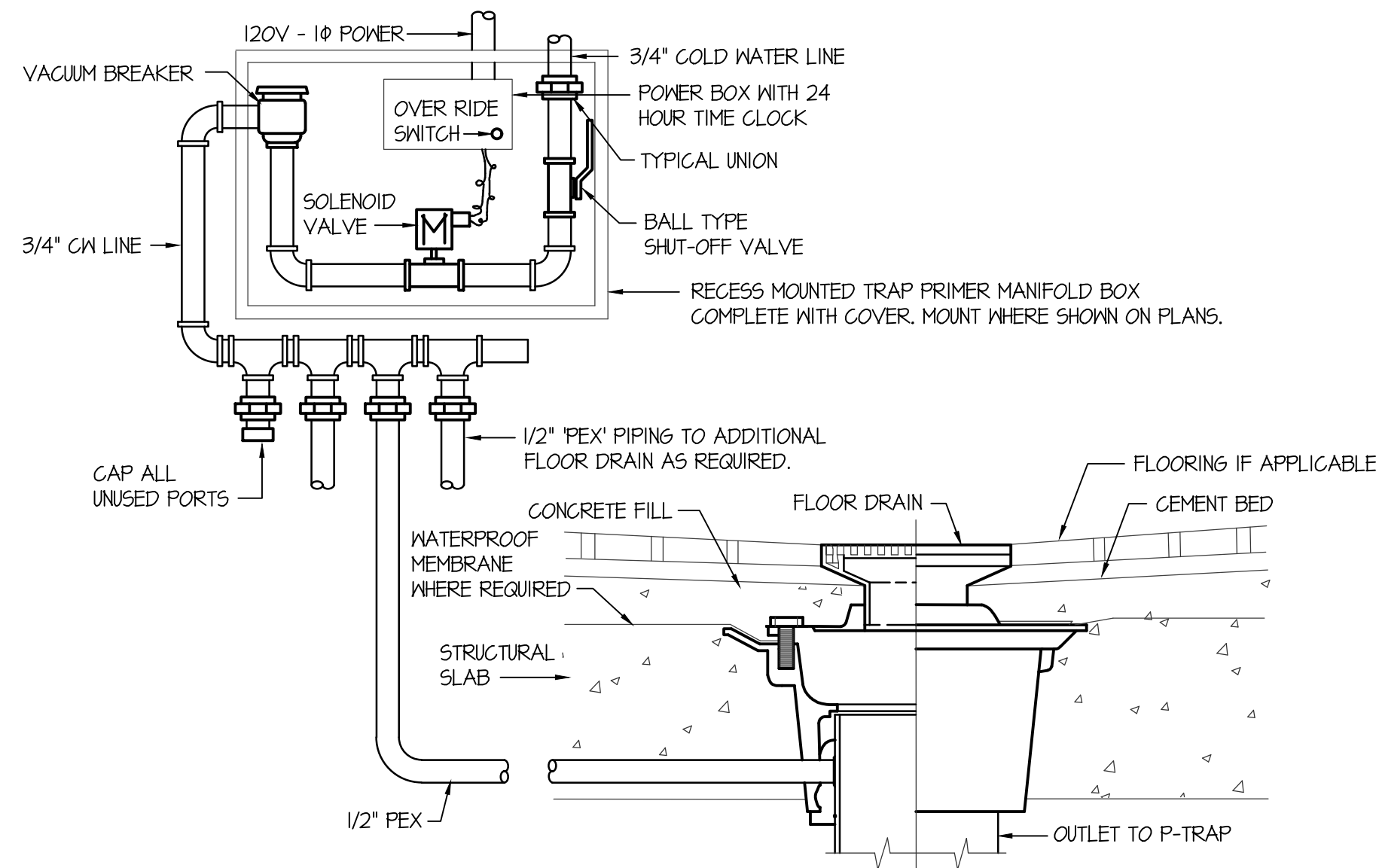


NOTES:
 PLANS FOR ALL INTERCEPTORS MUST BE SUBMITTED TO THE CITY FOR APPROVAL. PLANS MUST SHOW ALL DIMENSIONS, REINFORCED STEEL AND LOCATION ON THE SITE.
 TANK SHALL BE DESIGNED TO H520 LOADING IF USED IN TRAFFIC OR PARKING AREA.
 WALLS SHALL BE A MIN. OF 3" THICK
 CONCRETE SHALL HAVE A MINIMUM COMPRESSIVE STRENGTH OF 4000 PSI.
 TANKS SHALL BE CERTIFIED BY AN INDEPENDENT LAB FOR CAPACITY & STRUCTURAL STABILITY.

INTERNAL PIPING SHALL BE BRACED. ALL BRACKETS, NUTS AND BOLTS SHALL BE STAINLESS STEEL.
 TANKS SHALL BE PERMANENTLY & LEGIBLY MARKED W/MANUFACTURER'S NAME, MODEL AND DATE.
 TANKS MUST BE FILLED WITH CLEAN WATER PRIOR TO BACKFILLING FOR LEAK INSPECTION. THEN BACKFILL TO THE FLOW LINE PRIOR TO REQUESTING SECOND INSPECTION.
 INTERCEPTOR SHALL BE PLACED AS CLOSE AS PRACTICAL TO THE FIXTURES BEING SERVED AND AWAY FROM MAIN DOOR TO THE BUILDING.

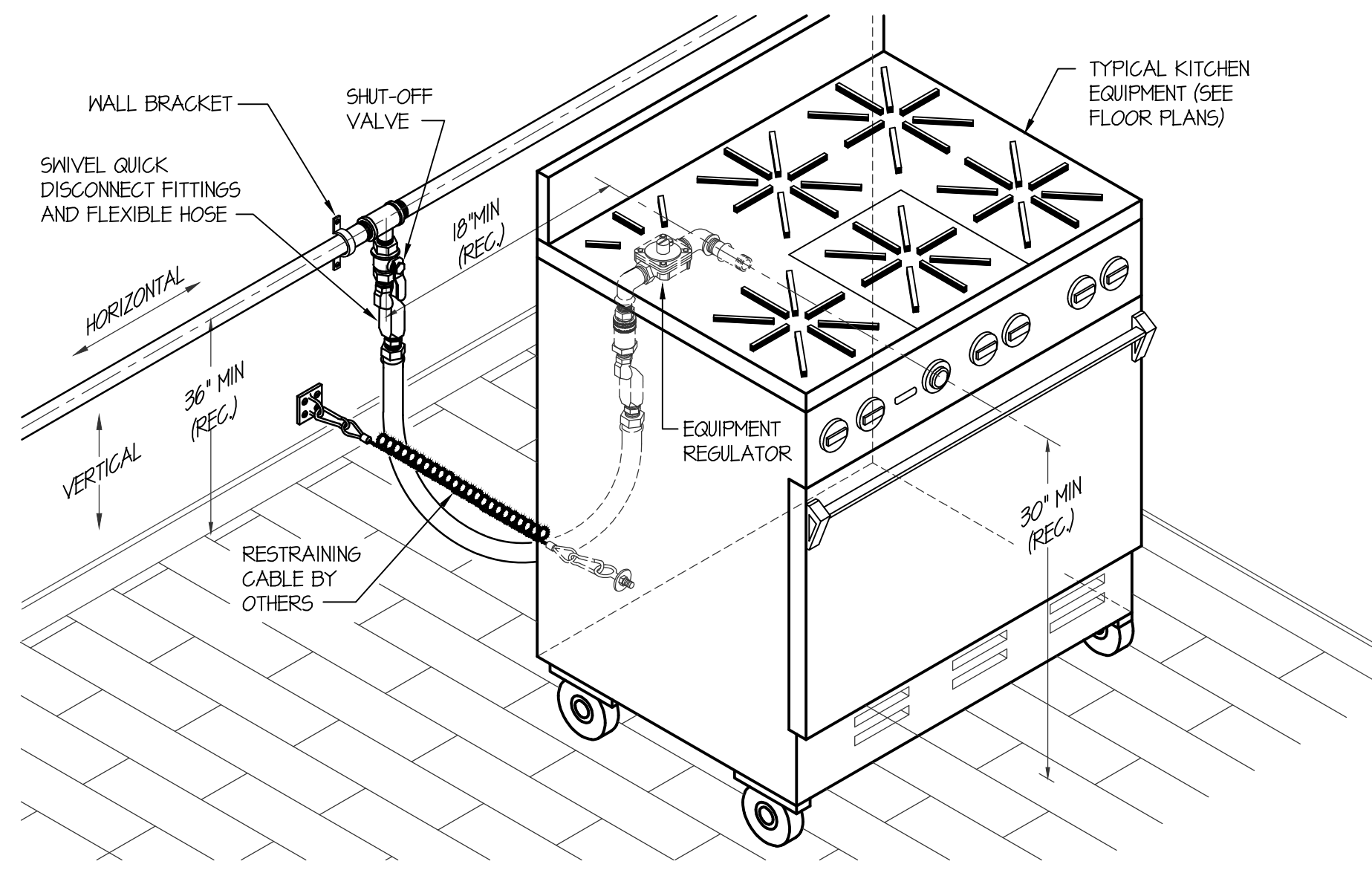
C GREASE TRAP INSTALLATION DETAIL

NO SCALE



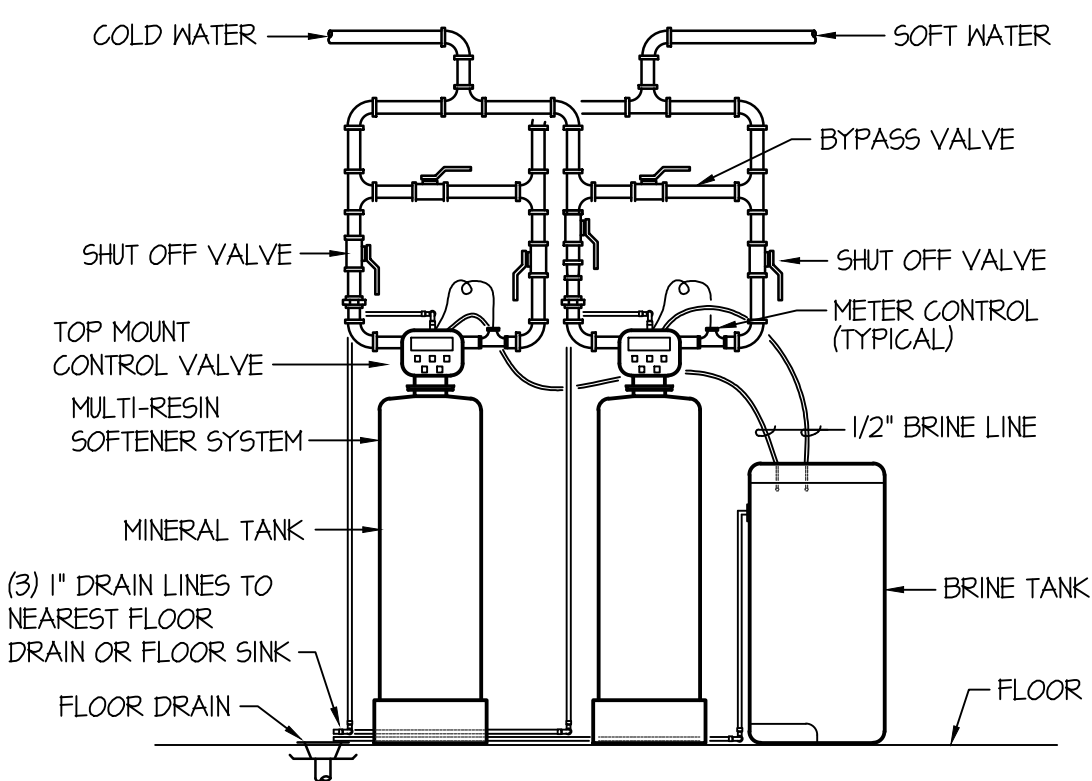
D MULTIPLE DRAIN TRAP PRIMER DETAIL

NO SCALE



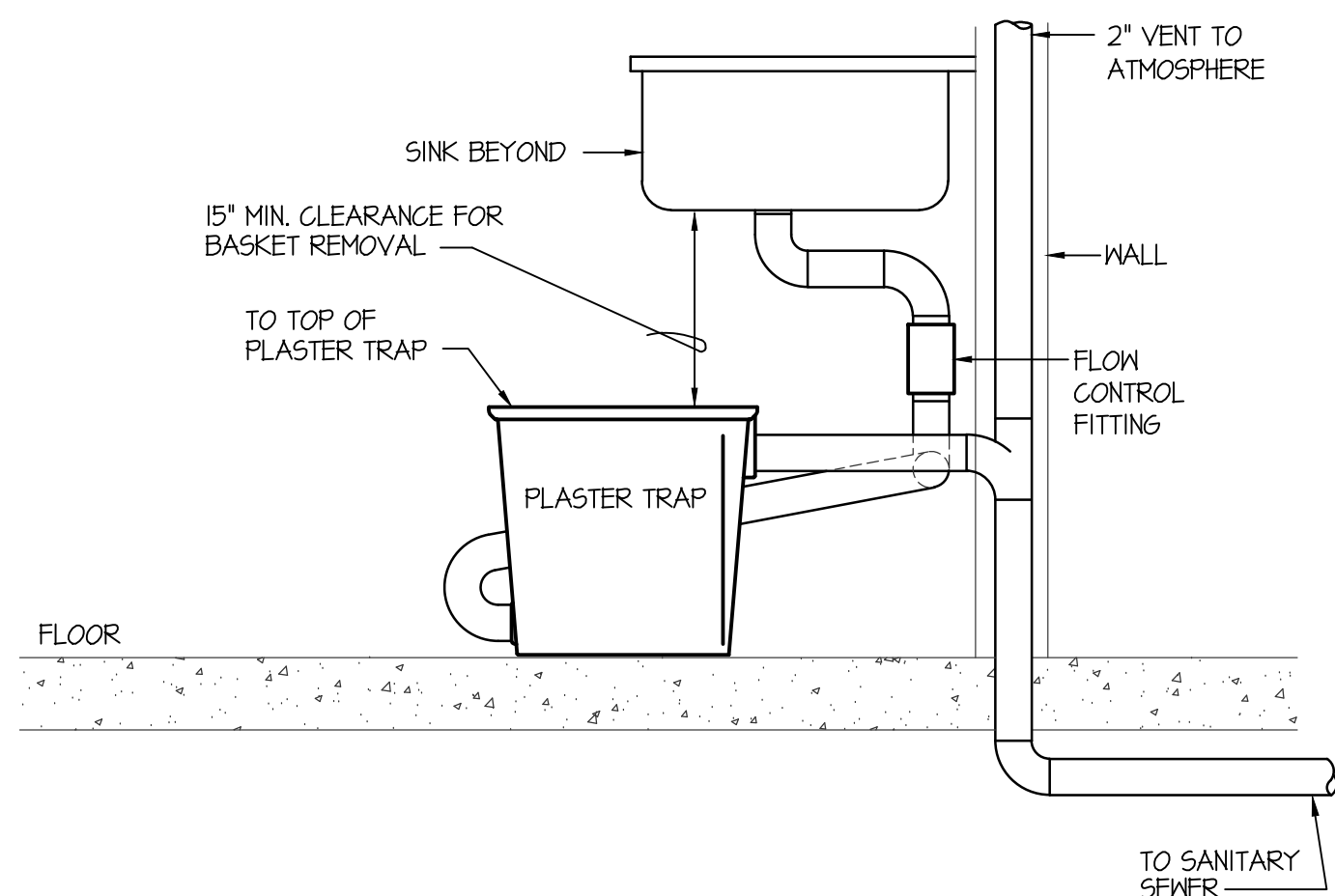
E SWIVEL GAS HOSE CONNECTOR DETAIL

NO SCALE



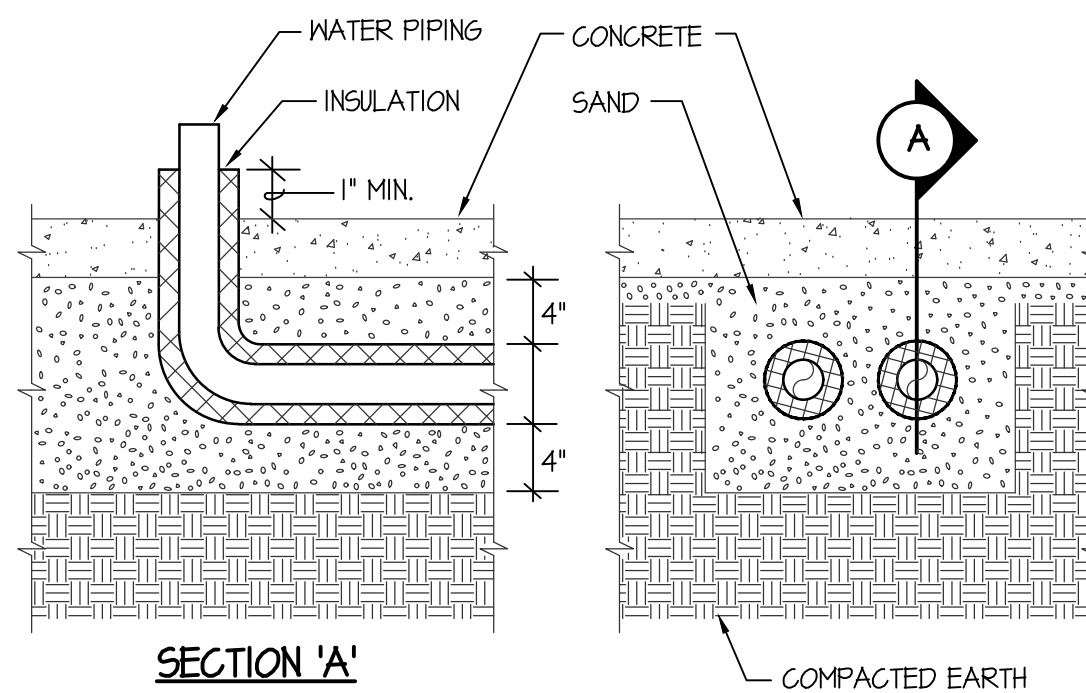
F WATER SOFTENER PIPING DIAGRAM

NO SCALE



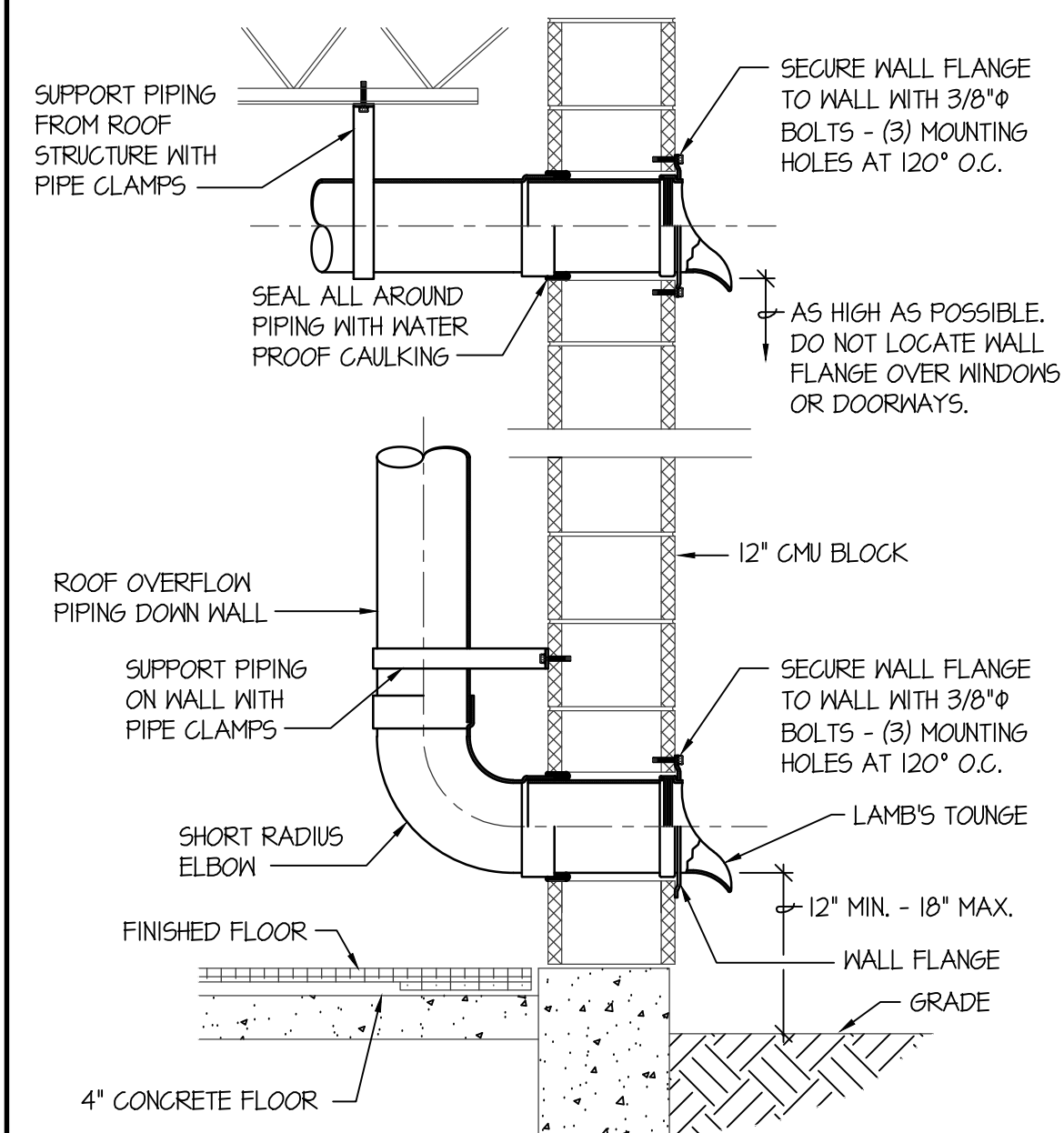
G PLASTER TRAP PIPING DIAGRAM

NO SCALE



H UNDERFLOOR PIPE INSULATION DETAIL

NO SCALE



J WALL FLANGE DETAIL

NO SCALE

BID SET

BRENT A. MCFARLAND AR-2561

STATE OF IDAHO

IRVA ASSOCIATES
 REGISTERED ARCHITECTS
 1152 BOND AVENUE - SUITE A REBERG, IDAHO 83440
 WWW.IRVA.COM VOICE (208) 359-2309 FAX (208) 359-2271

CONSULTANTS:
 LANDSCAPE ARCHITECT
 HEYER & ASSOCIATES
 1805 South Woodway
 Idaho Falls, Idaho 83404
 (208) 528-9004

CIVIL ENGINEERING
 CONNECT ENGINEERING
 1100 Highway 20
 Idaho Falls, Idaho 83405
 (208) 681-8590

STRUCTURAL ENGINEERING
 PROST STRUCTURAL ENGINEERING
 1020 Lincoln Road
 Idaho Falls, Idaho 83401
 (208) 227-4404
 Fax (208) 227-8405

MECHANICAL ENGINEERING
 ENGINEERED SYSTEMS ASSOC.
 1355 East Center Street
 Pocatello, Idaho 83204
 (208) 233-0501
 Fax (208) 233-0529

ELECTRICAL ENGINEERING
 FAYNE ENGINEERING INC.
 1813 East Center St.
 Pocatello, Idaho 83201
 (208) 232-4439
 Fax (208) 232-1435

IDAHO
SUGAR - SALEM
 SD #322
 JUNIOR HIGH SCHOOL
 SUGAR CITY

PROJECT:
 SUGAR CITY
 DRAWING TITLE:
PLUMBING DETAILS AND DIAGRAMS

REVISION:

#	DATE	COMMENT

DRAWN BY: M. JENSEN
 JOB NO: 764

CHECKED BY: D. SUDNEEKS
 DATE: APR '20

PLOT DATE: Apr 06, 2020

DRAWING NO. FILE: 19099-P3.2.dwg
P3.2

OF 16

ORIGINAL DRAWING SIGNED BY: DWAYNE C. SUDNEEKS
 DATE ORIGINAL SIGNED: Mar 05, 2020
 ORIGINAL ON FILE AT ENGINEERED SYSTEMS ASSOCIATES
 1355 EAST CENTER, POCATELLO, IDAHO 83201

Engineered Systems Associates
 1355 EAST CENTER
 POCATELLO, IDAHO 83201
 PHONE: (208) 233-0501
 FAX: (208) 233-0529
 EMAIL: esa@engsystems.com
 ESA JOB NUMBER: 19099

PROFESSIONAL ENGINEER REGISTERED
 5762
 STATE OF IDAHO
 DWAYNE C. SUDNEEKS