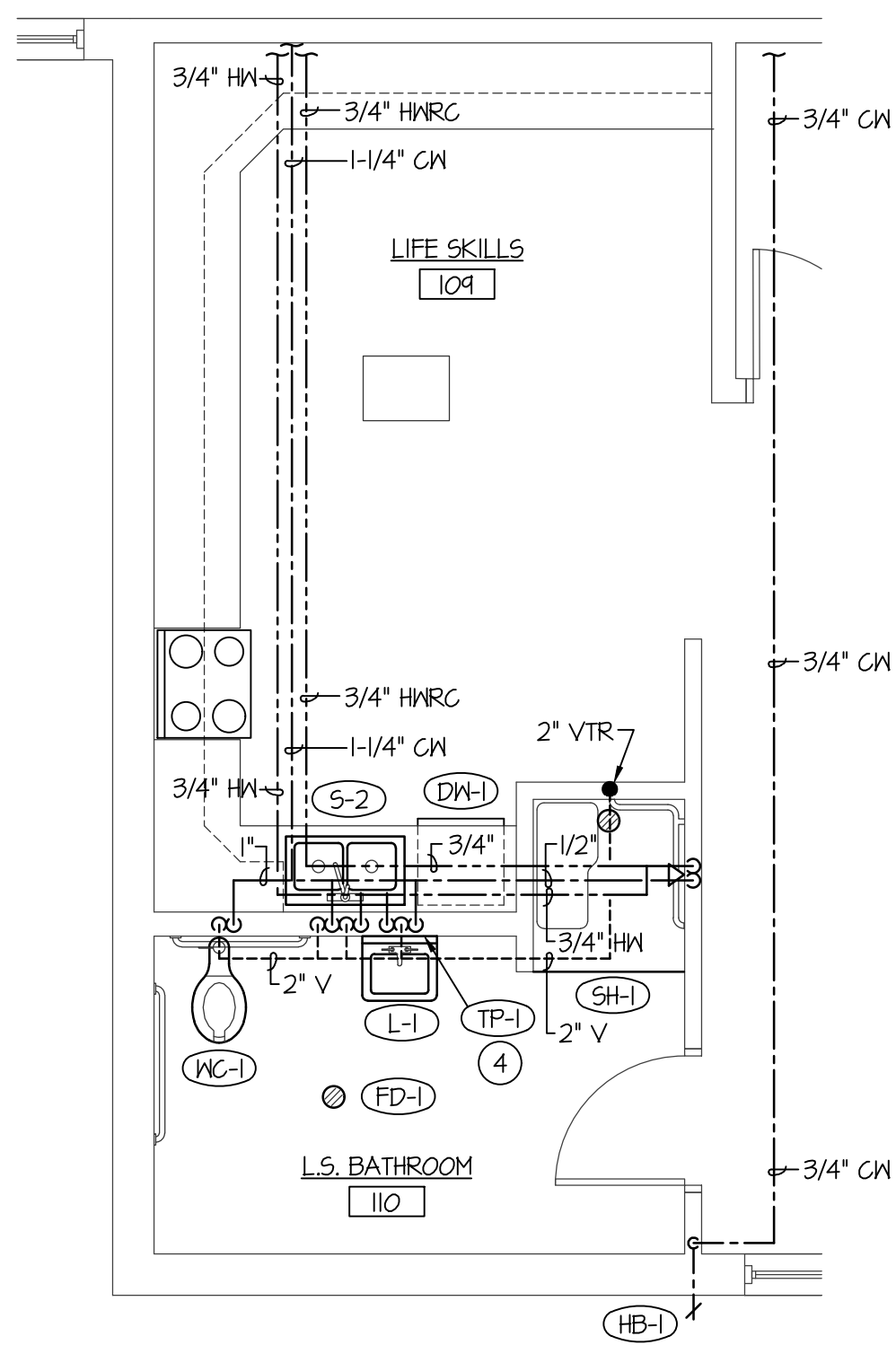
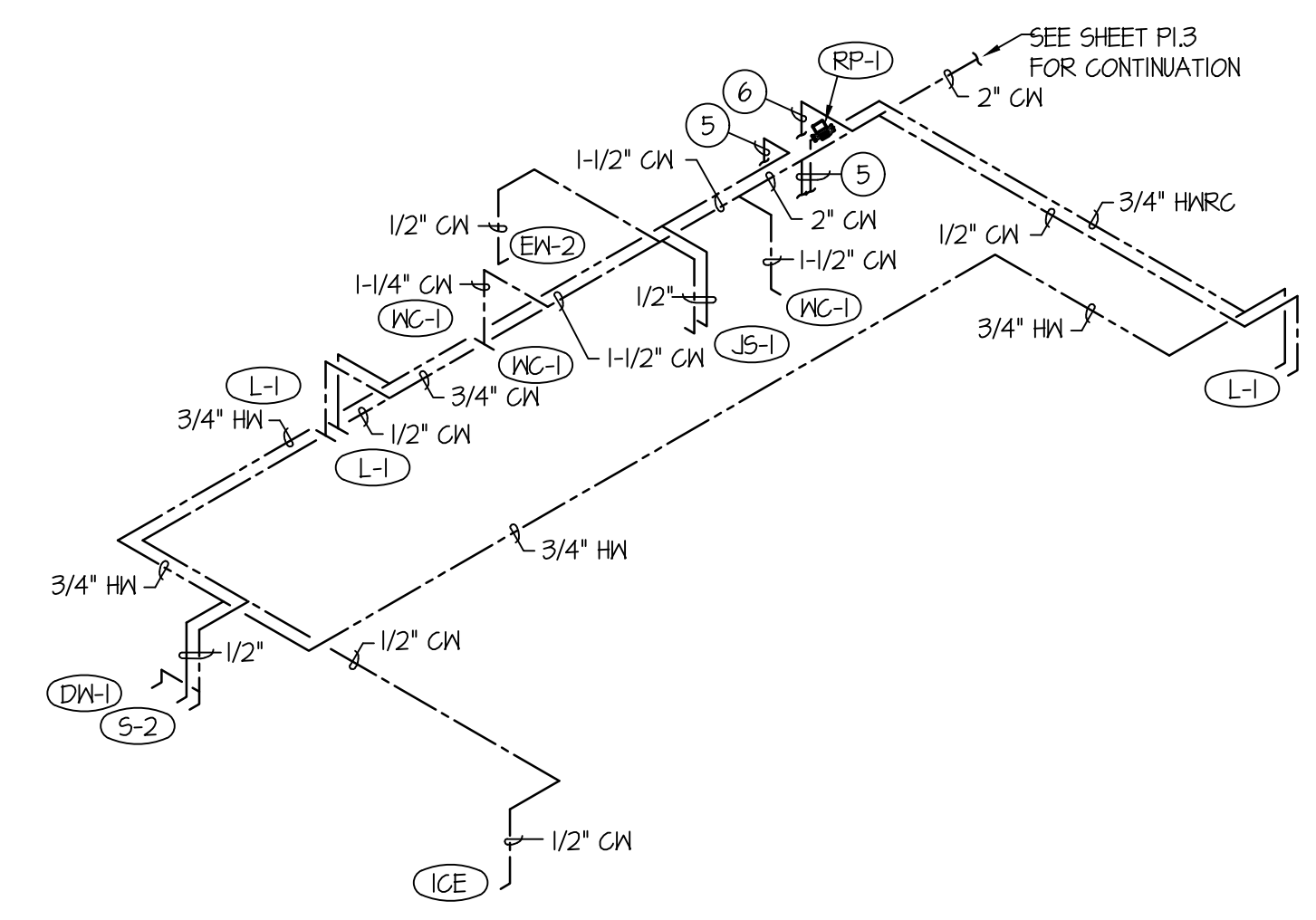


**LARGE SCALE TOILET ROOMS 202 & 203**  
SCALE: 1/4" = 1'-0"

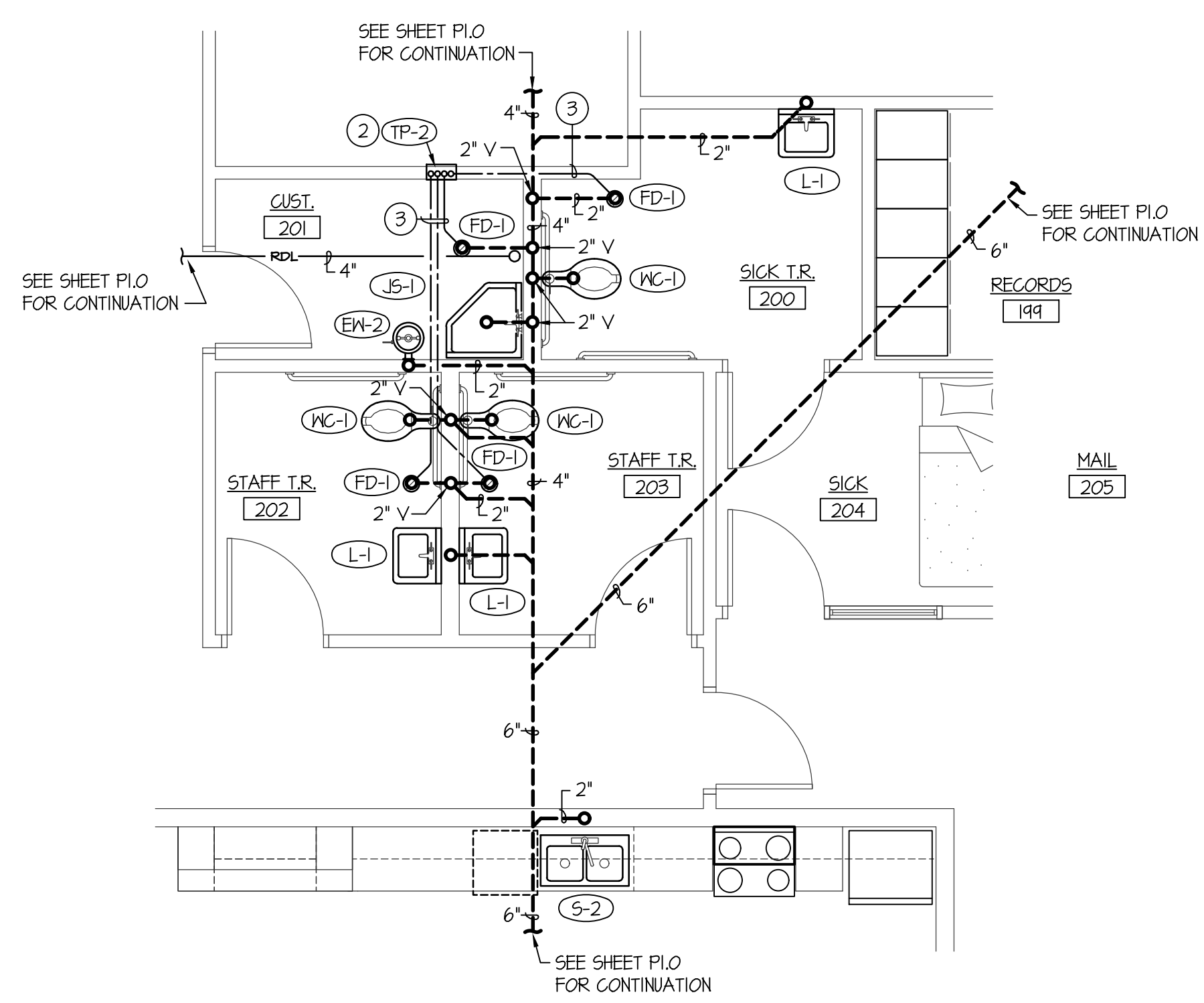


**LARGE SCALE LIFE SKILLS AREA 109**  
SCALE: 1/4" = 1'-0"

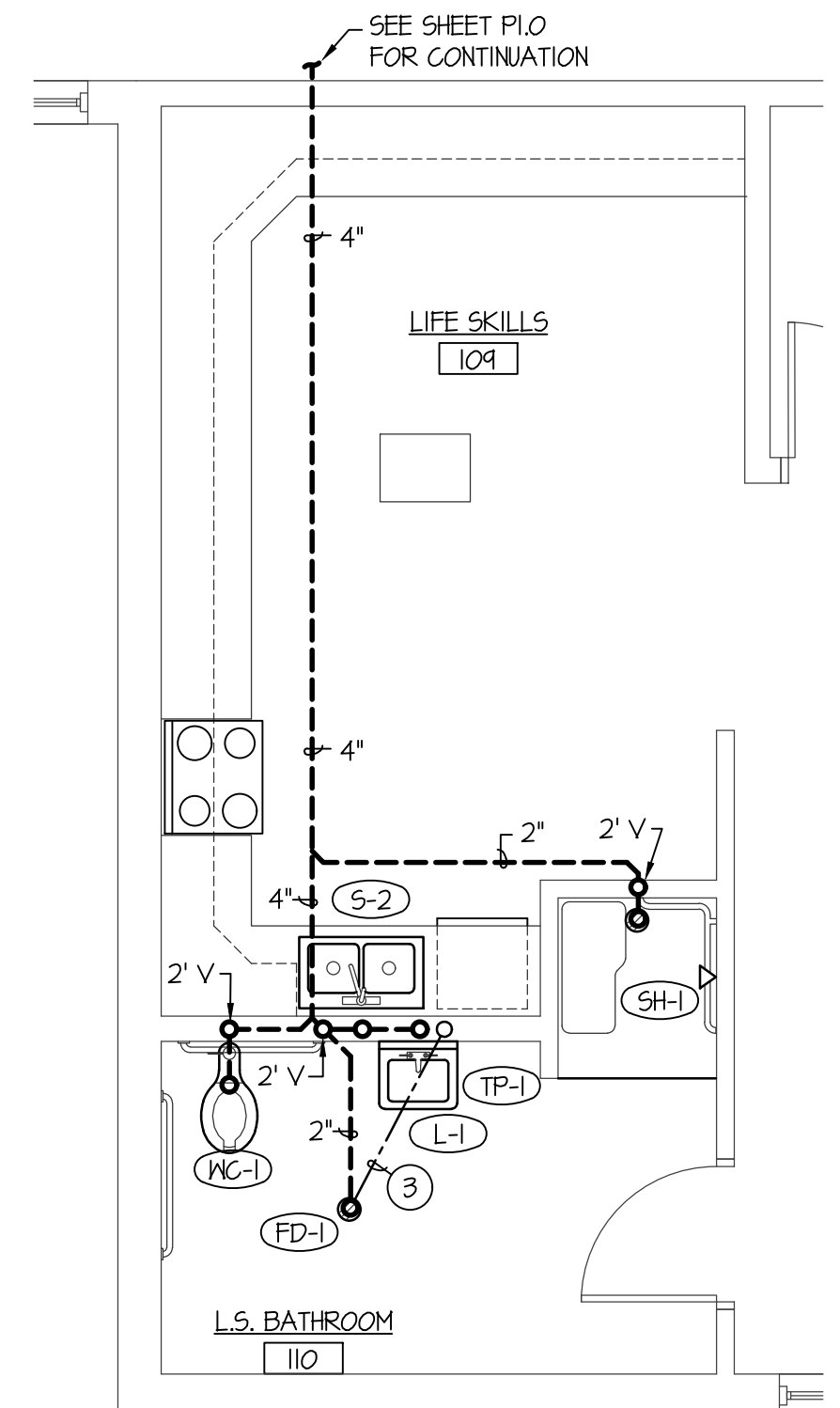


**WATER ISOMETRIC - ROOMS 202 & 203**  
NO SCALE

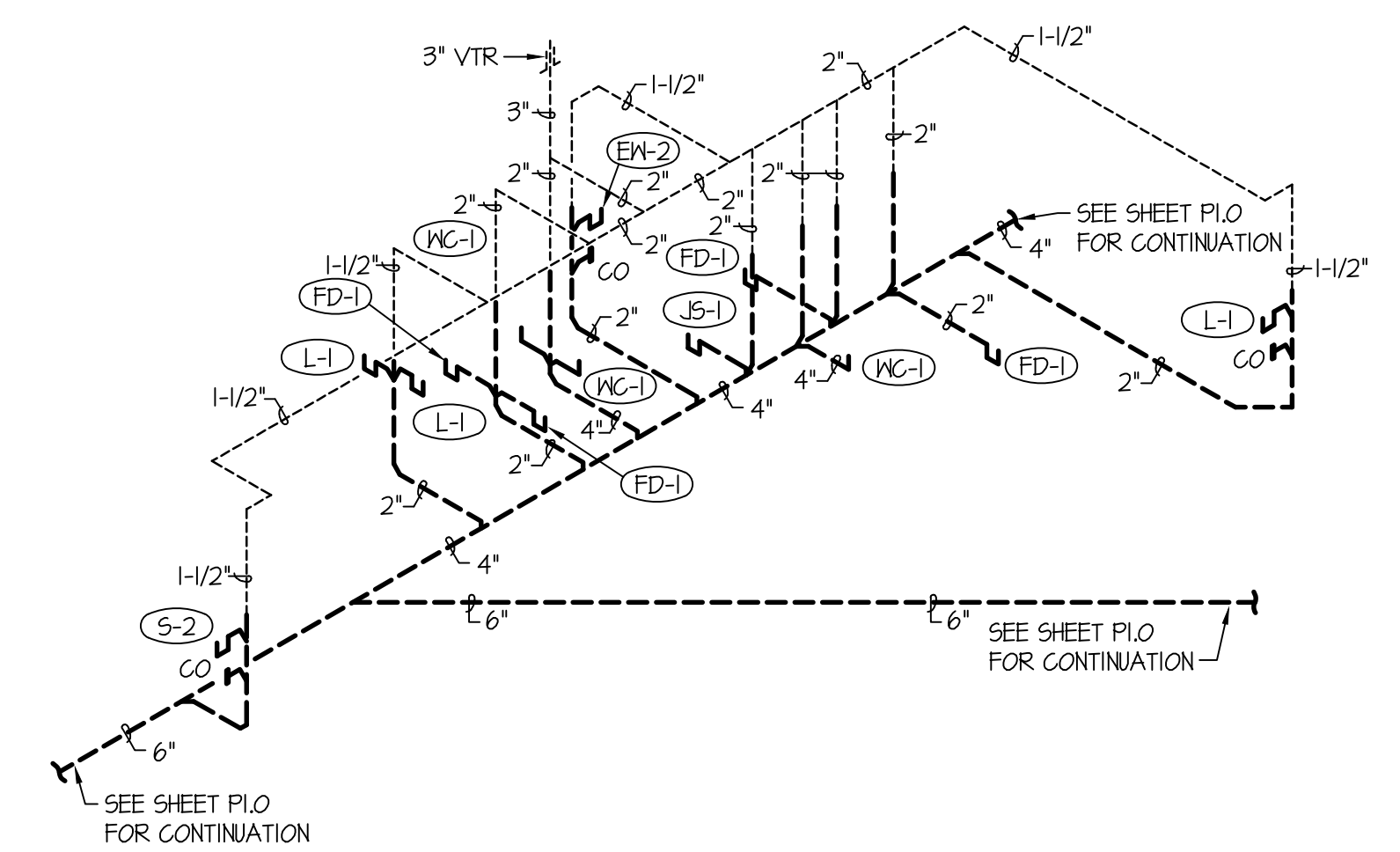
ENTIRE BUILDING TO BE FIRE SPRINKLED TO MEET NFPA-13 CODE REQUIREMENTS. FIELD VERIFY LOCATIONS OF OTHER PIPING, DUCTWORK, ELECTRICAL CONDUITS, AND BUILDING STRUCTURE. COORDINATE FIRE SPRINKLER HEADS AND PIPING WITH ALL OTHER TRADES. FIRE PIPING TO GO AROUND ALL MECHANICAL DUCTWORK AND GRILLES THRU ROOF, ROOF HATCHES, ROOF DRAINS, ETC.



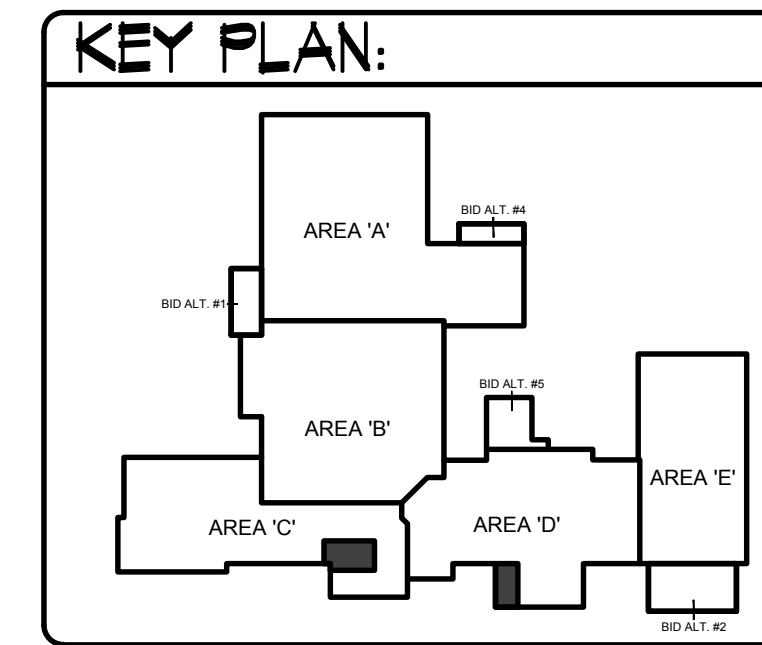
**LARGE SCALE TOILET ROOMS 202 & 203**  
SCALE: 1/4" = 1'-0"



**LARGE SCALE LIFE SKILLS AREA 109**  
SCALE: 1/4" = 1'-0"



**WASTE & VENT RISER DIAGRAM - ROOMS 202 & 203**  
NO SCALE



**KEY PLAN:**

**PLAN NOTES:**

- 1 PROVIDE AND INSTALL ELECTRIC WATER HEATER AS SPECIFIED. REFER TO DETAIL E/P3.1 FOR TYPICAL INSTALLATION AND PIPING CONNECTIONS.
- 2 PROVIDE AND INSTALL MULTI-DRAIN TRAP PRIMER AS SPECIFIED. TRAP PRIMER TO BE RECESSED MOUNTED IN WALL WITH 1/2" (PEX) COLD WATER LINE FOR EACH DRAIN SERVED. REFER TO DETAIL D/P3.2 FOR TYPICAL INSTALLATION AND PIPING CONNECTIONS.
- 3 RUN 1/2" COLD WATER LINE (PEX) BELOW FLOOR FROM TRAP PRIMER TO FLOOR DRAIN OR FLOOR SINK. REFER TO DETAIL D/P3.2 FOR TYPICAL PIPING CONNECTIONS TO TRAP PRIMER AND TO FLOOR DRAIN OR FLOOR SINK.
- 4 PROVIDE AND INSTALL SINGLE-DRAIN TRAP PRIMER AS SPECIFIED. TRAP PRIMER TO BE RECESSED MOUNTED IN WALL BELOW LAVATORY WITH 1/2" (PEX) COLD WATER LINE TO FLOOR DRAIN SERVED. REFER TO DETAIL A/P3.2 FOR TYPICAL INSTALLATION AND PIPING CONNECTIONS.
- 5 3/4" HOT WATER AND 3/4" COLD WATER LINES DOWN TO WATER HEATER. REFER TO DETAIL E/P3.1 FOR TYPICAL INSTALLATION AND PIPING CONNECTIONS.
- 6 3/4" COLD WATER LINE DOWN TO TRAP PRIMER IN WALL. REFER TO DETAIL D/P3.2 FOR TYPICAL INSTALLATION AND PIPING CONNECTIONS.

**BID SET**  
BRENT A. MCFARLAND AR-2561  
STATE OF IDAHO

**TRM & ASSOCIATES**  
1152 BOND AVENUE - SUITE A REGBURG, IDAHO 83440  
WWW.TRMA.COM VOICE (208) 359-2309 FAX (208) 359-2271

- CONSULTANTS:**
- LANDSCAPE ARCHITECT  
REINER & ASSOCIATES  
1805 South Woodruff  
Idaho Falls, Idaho 83404  
(208) 227-8404
  - CIVIL ENGINEERING  
CONNECT ENGINEERING  
1100 Harrison St.  
Idaho Falls, Idaho 83405  
(208) 681-8590
  - STRUCTURAL ENGINEERING  
PROST STRUCTURAL ENGINEERING  
1020 Lincoln Road  
Idaho Falls, Idaho 83401  
(208) 227-8404  
Fax (208) 227-8405
  - MECHANICAL ENGINEERING  
ENGINEERED SYSTEMS ASSOC.  
1355 East Center Street  
Pocatello, Idaho 83201  
(208) 233-0501  
Fax (208) 233-0529
  - ELECTRICAL ENGINEERING  
PANE ENGINEERING INC.  
1813 East Center St.  
Pocatello, Idaho 83201  
(208) 232-4439  
Fax (208) 232-1435

**SUGAR - SALEM**  
SD #322  
JUNIOR HIGH SCHOOL  
SUGAR CITY, IDAHO  
**LARGE SCALE PLUMBING PLANS**

#	DATE	COMMENT

REVISION:

DRAWN BY: M. JENSEN JOB NO: 764  
CHECKED BY: D. SUDNEEKS DATE: APR '20  
PLOT DATE: Apr 06, 2020

DRAWING NO. FILE: 19099-P2.4.dwg  
**P2.4**  
OF 16

ORIGINAL DRAWING SIGNED BY: DWAYNE C. SUDNEEKS  
DATE ORIGINAL SIGNED: Mar 05, 2020  
ORIGINAL ON FILE AT ENGINEERED SYSTEMS ASSOCIATES  
1355 EAST CENTER, POCATELLO, IDAHO 83201

**Engineered Systems Associates**  
1355 EAST CENTER  
POCATELLO, IDAHO 83201  
PHONE: (208) 233-0501  
FAX: (208) 233-0529  
EMAIL: esa@engsystems.com  
ESA JOB NUMBER: 19099