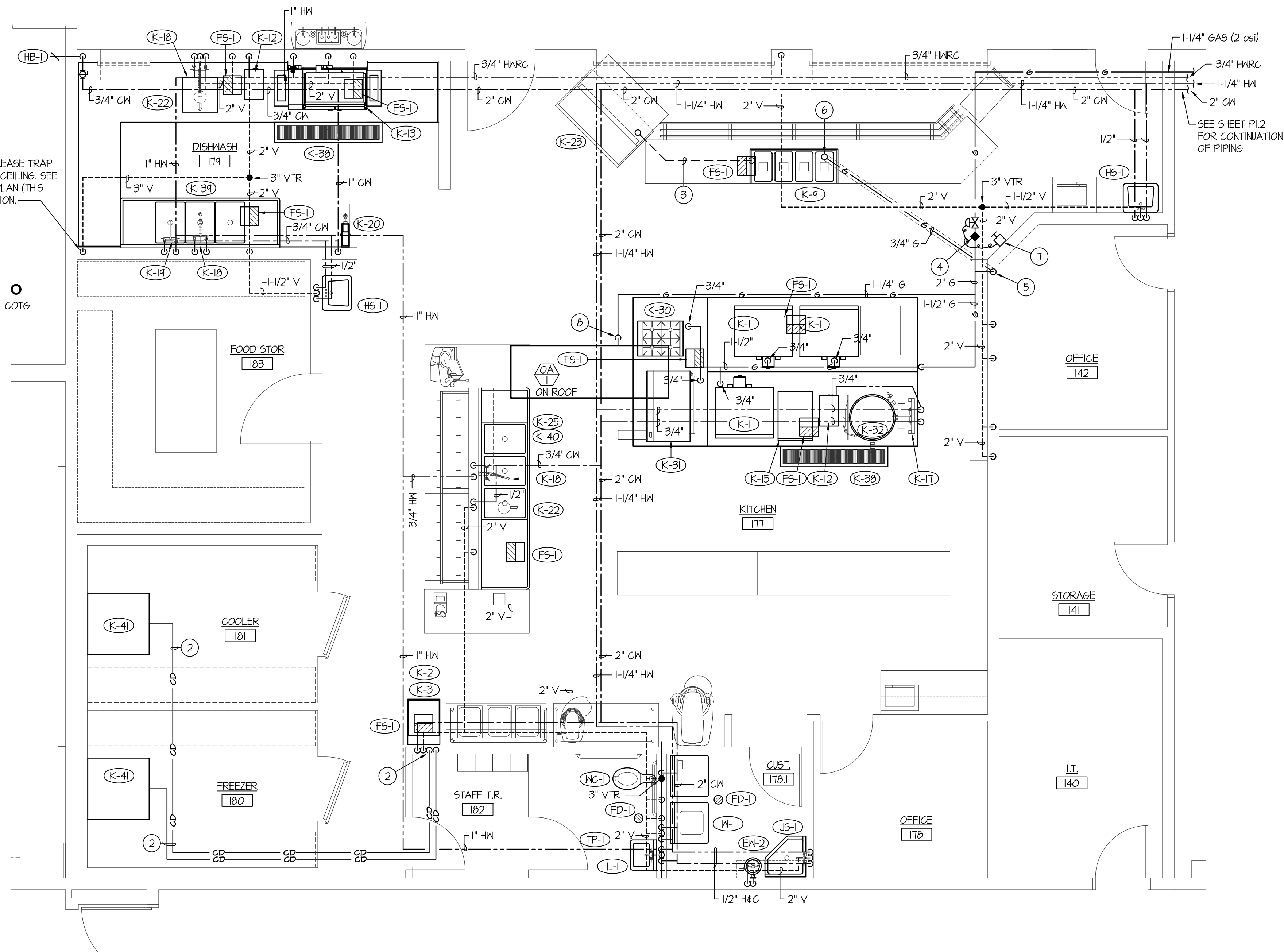
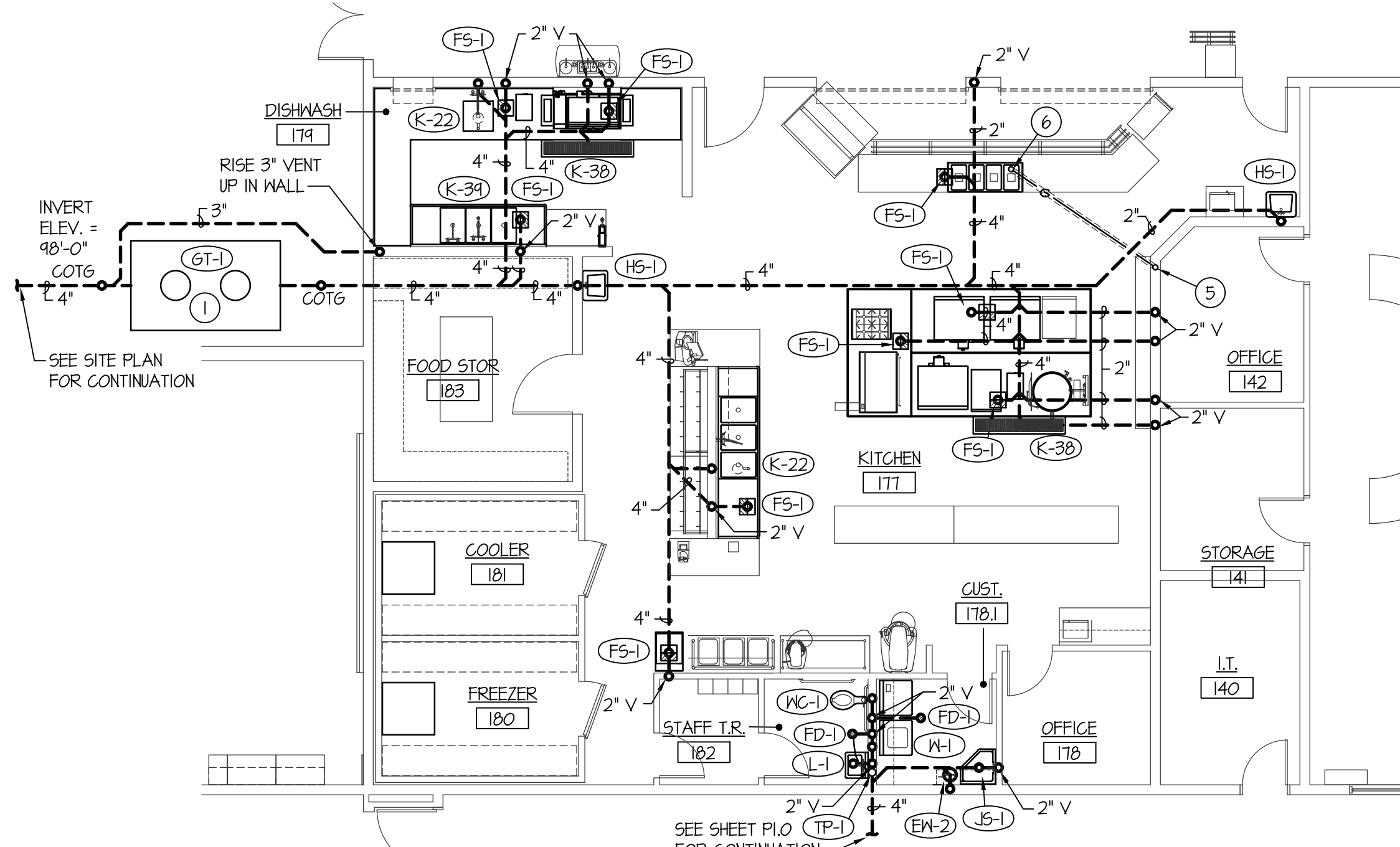
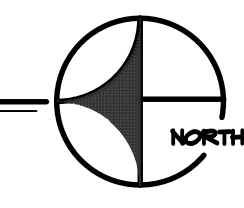


F:\V\10094\Sugar\_Salem\_Jr\_High\10094-P2.3.dwg Apr 06, 2020 - 2:03pm



**LARGE SCALE KITCHEN PLUMBING PLAN**

SCALE: 1/4" = 1'-0"



**KITCHEN UNDER FLOOR PLUMBING PLAN**

SCALE: 1/8" = 1'-0"

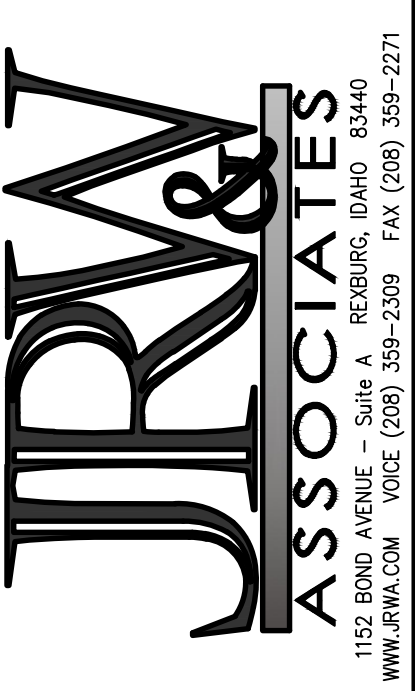


**PLAN NOTES:**

- 1 PROVIDE AND INSTALL 1000 GALLON GREASE INTERCEPTOR BELOW GRADE. CONNECT TO 4" WASTE PIPING SERVING KITCHEN FIXTURES AS SHOWN. REFER TO DETAIL G/P3.2 FOR TYPICAL INSTALLATION.
- 2 RUN DRAIN LINES FROM COOLER AND FREEZER UNITS TO FLOOR SINK AS SHOWN. INSULATE DRAIN LINES AND PROVIDE HEAT TRACE IN AREAS PRONE TO FREEZING.
- 3 RUN DRAIN LINES FROM EQUIPMENT BELOW COUNTERS TO NEAREST FLOOR SINK. COORDINATE WITH OTHER EQUIPMENT AND PIPING. MAINTAIN GRADE IN DRAIN LINES DOWNWARD IN DIRECTION OF FLOW.
- 4 PROVIDE PRESSURE REGULATOR ON 3/4" GAS LINE AND VENT TO OUTSIDE AS RECOMMENDED BY MANUFACTURER. ENLARGE LOW PRESSURE PIPING TO 1-1/4" AND RUN TO KITCHEN EQUIPMENT AS SHOWN. PROVIDE SHUT-OFF VALVE AT EACH PIECE OF EQUIPMENT. REFER TO DETAIL E/P3.2 FOR TYPICAL GAS PIPING CONNECTION TO KITCHEN EQUIPMENT.
- 5 PROVIDE 3" PVC SLEEVE IN WALL AND BELOW FLOOR FOR 3/4" GAS LINE INSTALLED BELOW FLOOR. SLEEVE TO EXTEND UP THRU ROOF WITH GOOSENECK. REFER TO DETAIL F/P3.3 FOR TYPICAL GAS SLEEVE INSTALLATION.
- 6 RISE 3/4" GAS LINE UP THRU FLOOR. SEAL 3" PVC SLEEVE WITH TIGHT. (REFER TO DETAIL F/P3.3) CONNECT 3/4" GAS LINE TO K-4 KITCHEN EQUIPMENT WITH SHUT-OFF VALVE AND FLEXIBLE HOSE.
- 7 WALL MOUNTED EMERGENCY GAS SHUTOFF BUTTON. INTERLOCK WITH SOLENOID VALVE ABOVE CEILING.
- 8 RISE 1-1/4" GAS LINE (LOW PRESSURE) UP THRU ROOF AND CONNECT TO OUTSIDE AIR UNIT WITH SHUT-OFF VALVE AND FLEXIBLE HOSE. SEAL ROOF PENETRATION WATER TIGHT. REFER TO DETAIL O/P3.1.

**BID SET**

BRENT A. MCFARLAND AR-2561  
STATE OF IDAHO



- CONSULTANTS:**
- LANDSCAPE ARCHITECT  
REINER & ASSOCIATES  
1605 South Woodway  
Mesa Falls, Idaho 83404  
(208) 528-9004
  - CIVIL ENGINEERING  
CONNECT ENGINEERING  
1100 Halpin Dr.  
Mesa Falls, Idaho 83405  
(208) 681-8590
  - STRUCTURAL ENGINEERING  
FROST STRUCTURAL ENGINEERING  
1020 Lincoln Road  
Mesa Falls, Idaho 83401  
(208) 227-8404  
Fax: (208) 227-8405
  - MECHANICAL ENGINEERING  
ENGINEERED SYSTEMS ASSOC.  
1355 East Center Street  
Pocatello, Idaho 83204  
(208) 233-0501  
Fax: (208) 233-0529
  - ELECTRICAL ENGINEERING  
PANE ENGINEERING INC.  
1823 East Center St.  
Pocatello, Idaho 83201  
(208) 232-4439  
Fax: (208) 232-1435

PROJECT: SUGAR - SALEM JUNIOR HIGH SCHOOL  
SUGAR CITY IDAHO  
DRAWING TITLE: LARGE SCALE PLUMBING PLANS

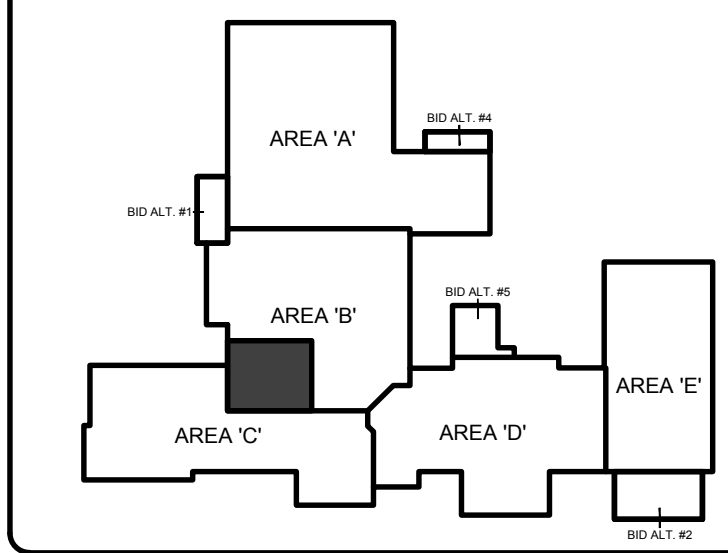
REVISION:		
#	DATE	COMMENT

DRAWN BY: M. JENSEN JOB NO: 764  
CHECKED BY: D. SUDNEEKS DATE: APR '20  
PLOT DATE: Apr 06, 2020

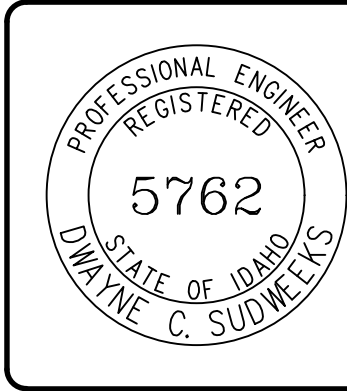
DRAWING NO. P2.3  
FILE: 19099-P2.3.dwg  
OF 16

ENTIRE BUILDING TO BE FIRE SPRINKLED TO MEET NFPA-13 CODE REQUIREMENTS. FIELD VERIFY LOCATIONS OF OTHER PIPING, DUCTWORK, ELECTRICAL CONDUITS, AND BUILDING STRUCTURE. COORDINATE FIRE SPRINKLER HEADS AND PIPING WITH ALL OTHER TRADES. FIRE PIPING TO GO AROUND ALL MECHANICAL DUCTWORK AND GRILLES THRU ROOF, ROOF HATCHES, ROOF DRAINS, ETC.

**KEY PLAN:**



ORIGINAL DRAWING SIGNED BY: DWAYNE C. SUDNEEKS  
DATE ORIGINAL SIGNED: Mar 05, 2020  
ORIGINAL ON FILE AT ENGINEERED SYSTEMS ASSOCIATES  
1355 EAST CENTER, POCATELLO, IDAHO 83201



**Engineered Systems Associates**  
1355 EAST CENTER  
POCATELLO, IDAHO 83201  
PHONE: (208) 233-0501  
FAX: (208) 233-0529  
EMAIL: esa@engsystems.com  
ESA JOB NUMBER: 19099