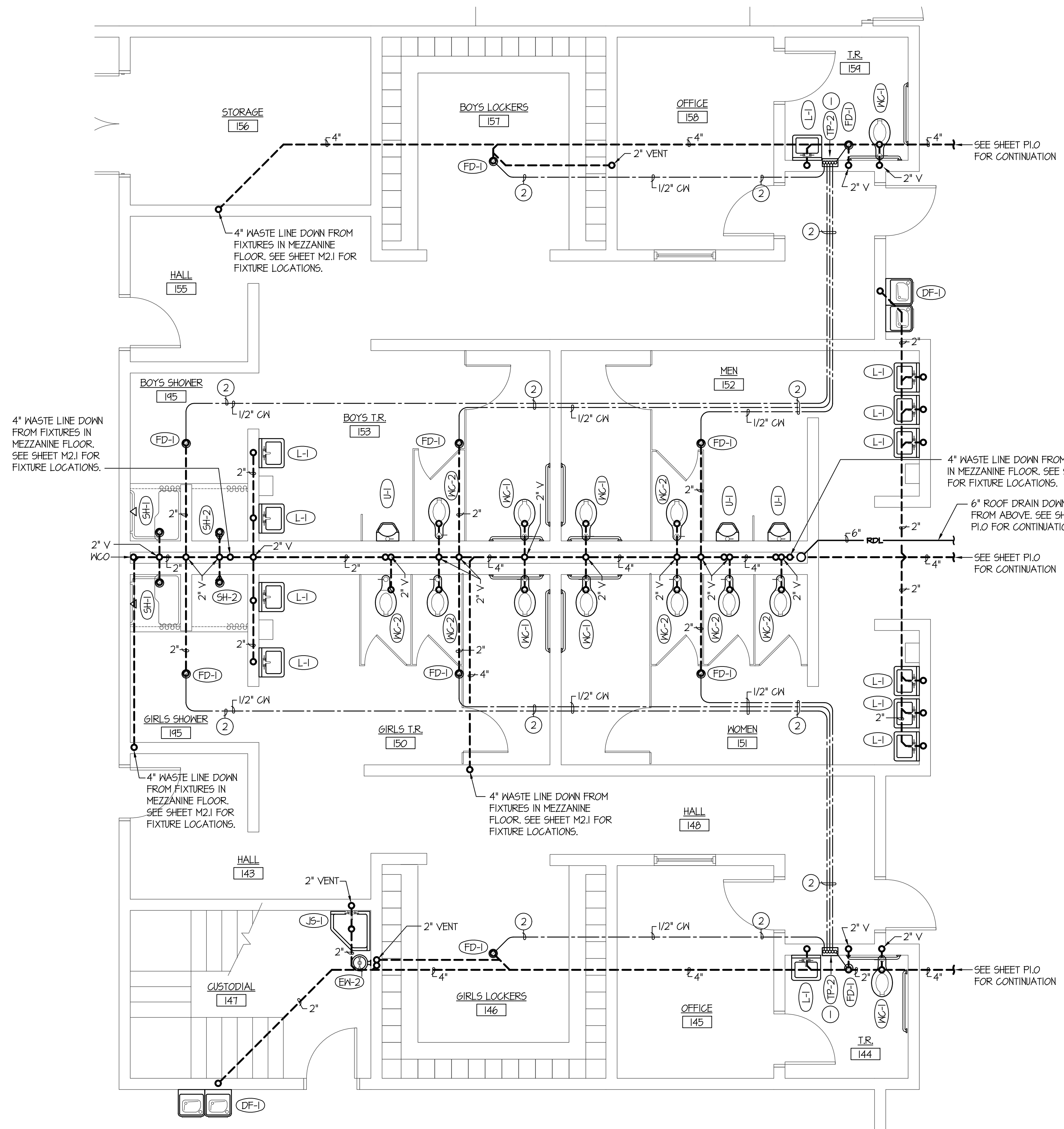


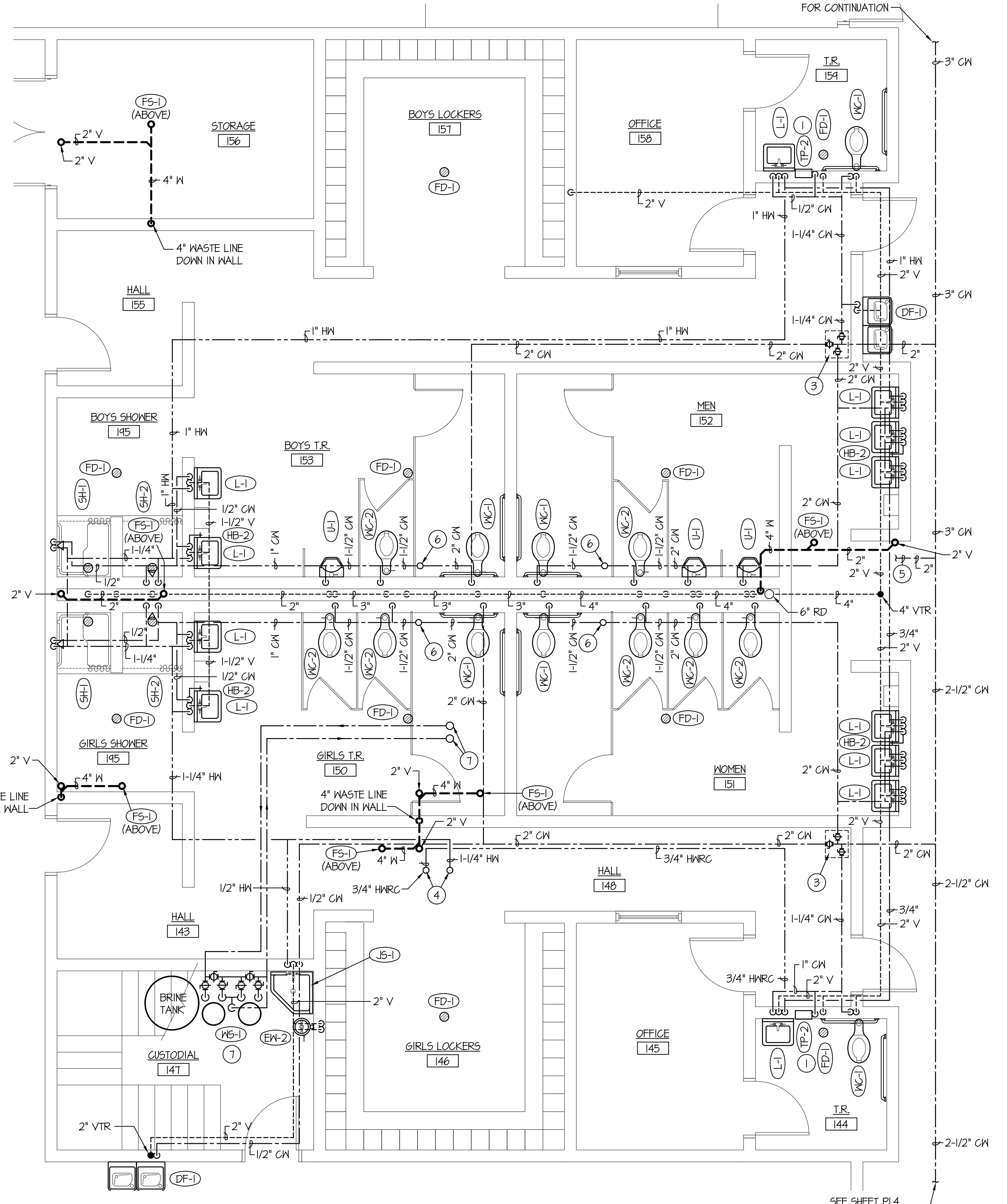
IRVA & ASSOCIATES, P.L.L.C. DRAWINGS AND DESIGNS ARE PROTECTED BY COPYRIGHT AND THE ARCHITECT RETAINS TOTAL OWNERSHIP AND CONTROL. ANY UNAUTHORIZED USE OF DRAWINGS, DESIGN OR IDEAS WITHOUT WRITTEN CONSENT OF THE ARCHITECT ARE PROHIBITED.



UNDER FLOOR WASTE PIPING PLAN - LOCKER ROOMS
SCALE: 1/4" = 1'-0"

- PLAN NOTES:**
- 1 PROVIDE AND INSTALL MULTI-DRAIN TRAP PRIMER AS SPECIFIED. TRAP PRIMER TO BE RECESS IN WALL WITH 1/2" (PEX) COLD WATER LINE FOR EACH DRAIN SERVED. REFER TO DETAIL D/P3.2 FOR TYPICAL INSTALLATION AND PIPING CONNECTIONS.
 - 2 RUN 1/2" COLD WATER LINE (PEX) BELOW FLOOR FROM TRAP PRIMER TO FLOOR DRAIN OR FLOOR SINK. REFER TO DETAIL D/P3.2 FOR TYPICAL PIPING CONNECTIONS TO TRAP PRIMER AND TO FLOOR DRAIN OR FLOOR SINK.
 - 3 PROVIDE (3) ISOLATION VALVES FOR WATER SHUT-OFF. PROVIDE CEILING ACCESS HATCH BELOW VALVES.
 - 4 DROP 1-1/4" HOT WATER AND 3/4" HOT WATER RECIRC. LINES DOWN THRU MEZZANINE FLOOR. RUN TO FIXTURES AS SHOWN.

- PLAN NOTES:**
- 5 2" COLD WATER LINE TO MEZZANINE MECHANICAL ROOM. REFER TO LARGE SCALE PLAN ON SHEET M2.1 FOR CONTINUATION.
 - 6 PROVIDE WATER HAMMER ARRESTER FITTING ON COLD WATER PIPING. REFER TO SPECIFICATIONS.
 - 7 DROP 2" COLD WATER LINE DOWN FROM ABOVE. RUN TO CUST. ROOM 147 AND CONNECT TO WATER SOFTENER. RISE BACK UP THRU MEZZANINE FLOOR ABOVE AND CONNECT TO WATER HEATER IN MECHANICAL ROOM. SEE SHEET M2.1 FOR CONTINUATION OF PIPING ABOVE. REFER TO DETAIL F/P3.2 FOR TYPICAL PIPING CONNECTIONS TO WATER SOFTENER.



LARGE SCALE LOCKER ROOMS PLUMBING PLANS
SCALE: 1/4" = 1'-0"

ENTIRE BUILDING TO BE FIRE SPRINKLED TO MEET NFPA-13 CODE REQUIREMENTS. FIELD VERIFY LOCATIONS OF OTHER PIPING, DUCTWORK, ELECTRICAL CONDUITS, AND BUILDING STRUCTURE. COORDINATE FIRE SPRINKLER HEADS AND PIPING WITH ALL OTHER TRADES. FIRE PIPING TO GO AROUND ALL MECHANICAL DUCTWORK AND GRILLES THRU ROOF, ROOF HATCHES, ROOF DRAINS, ETC.

