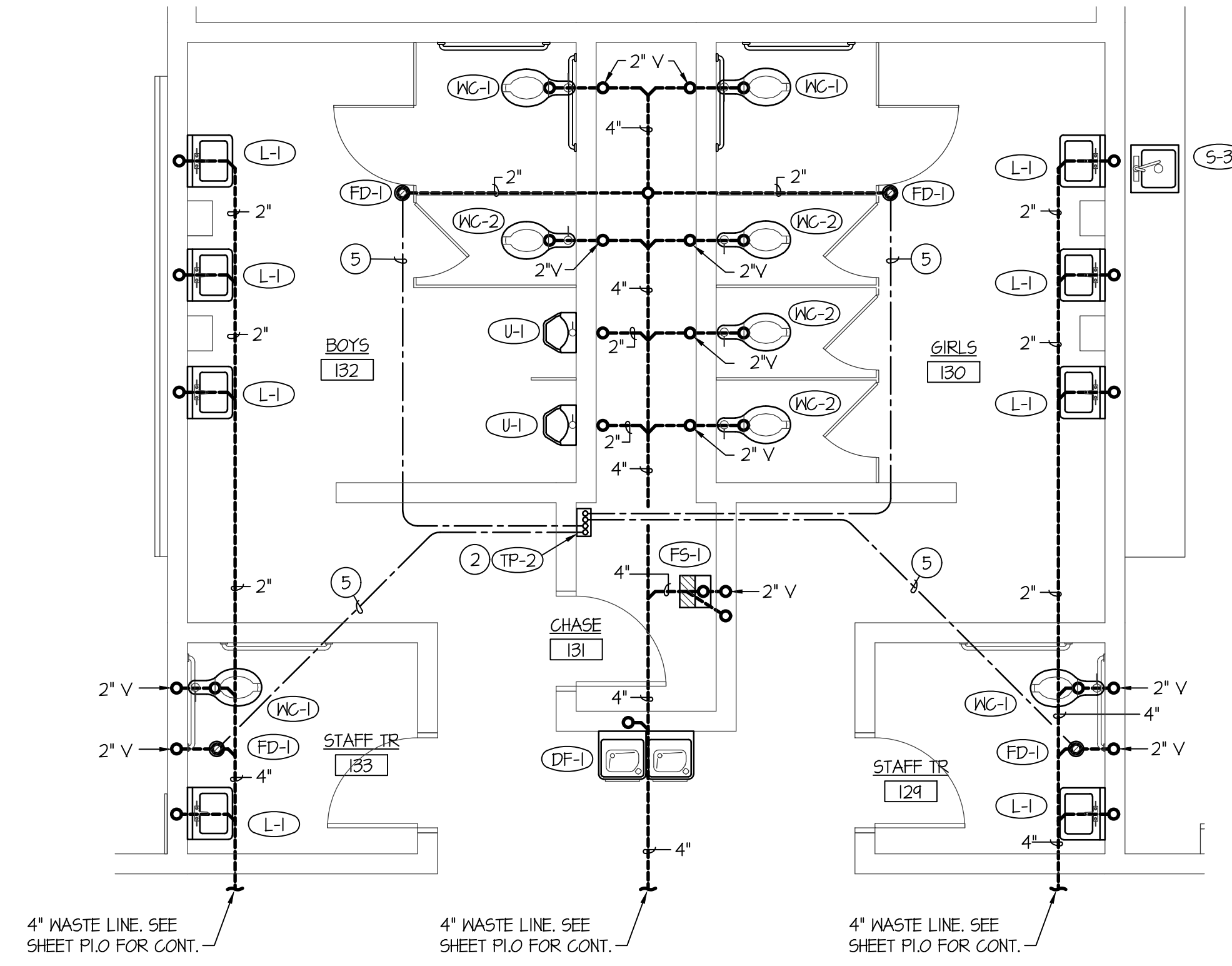
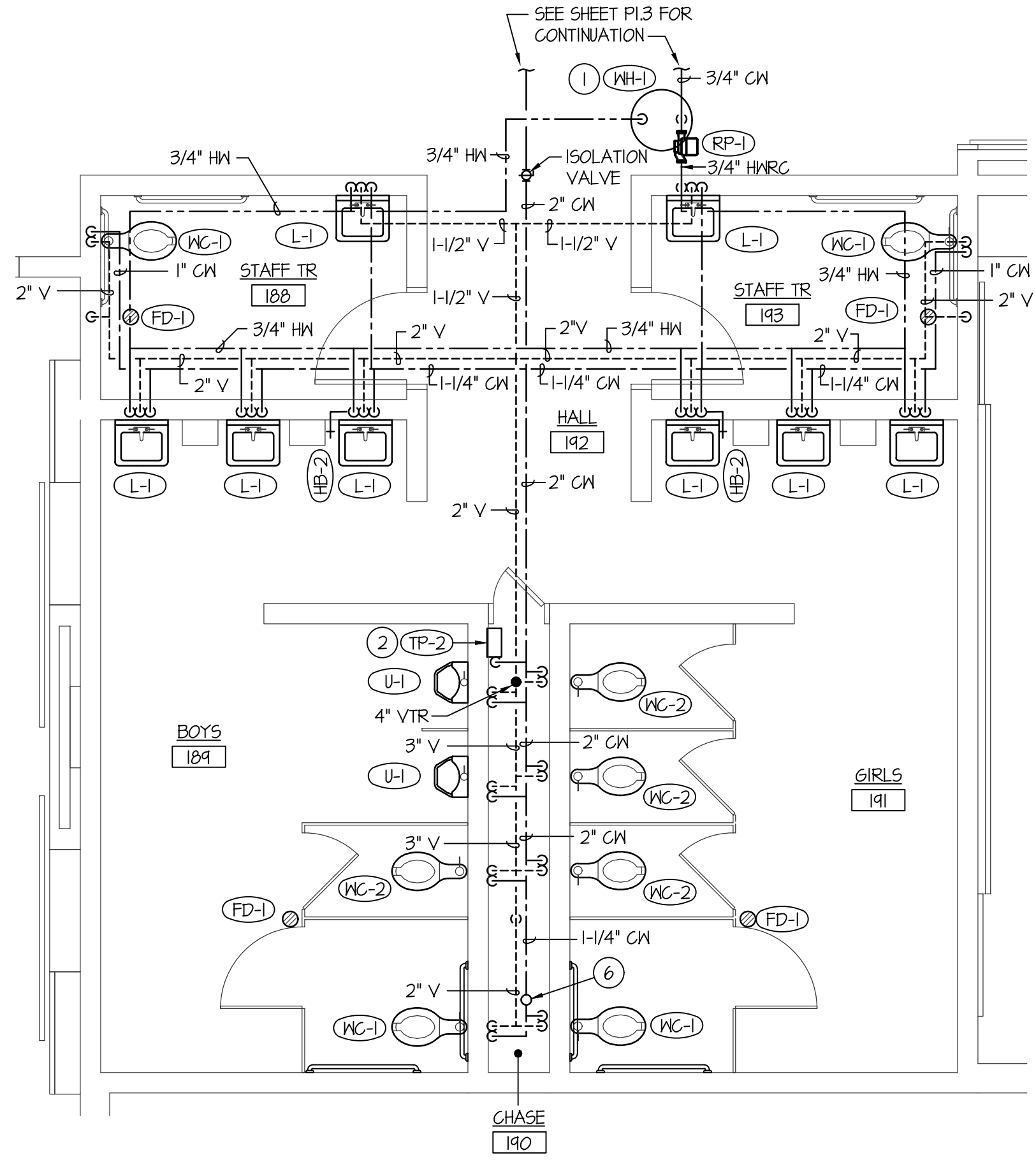


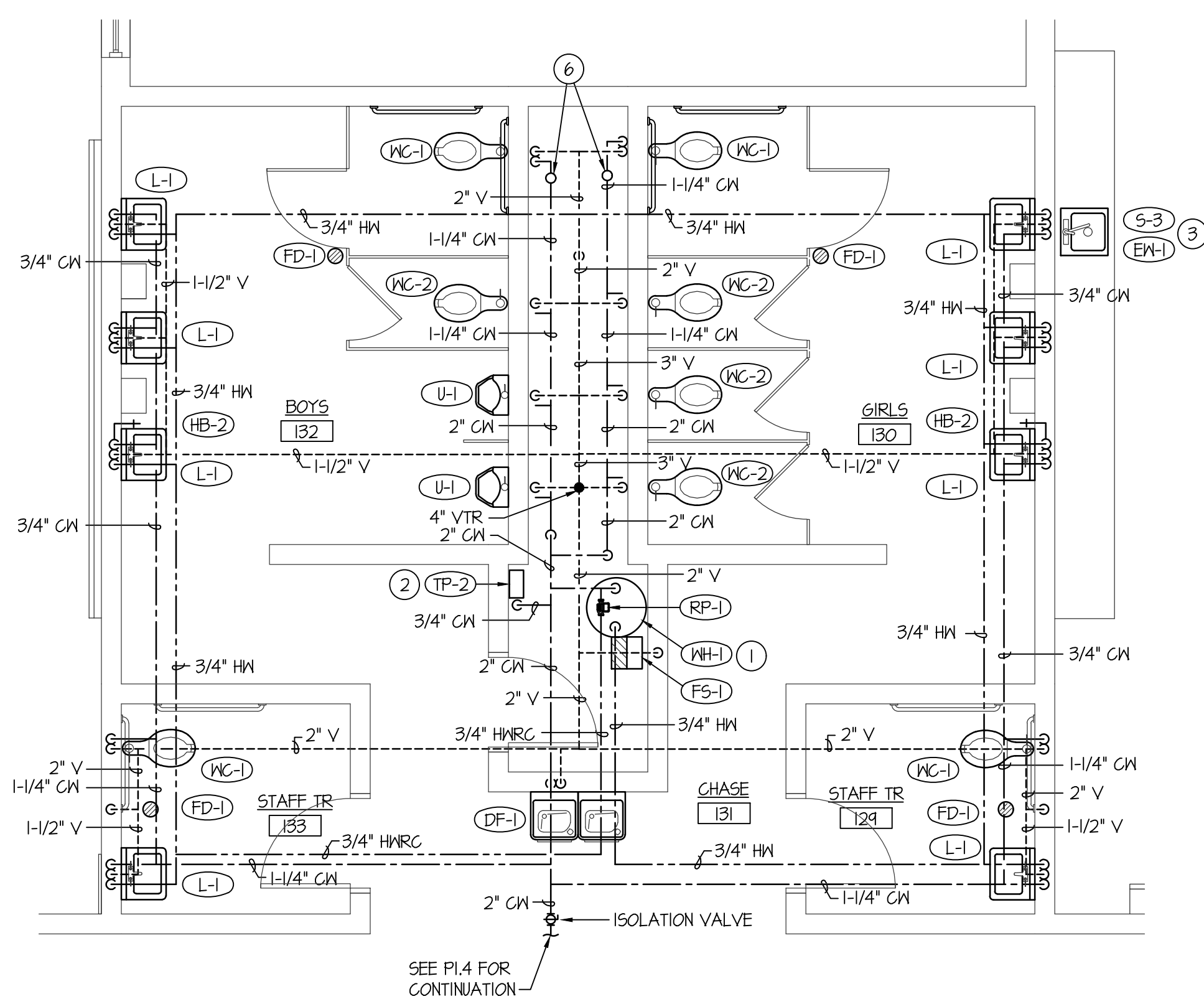
UNDER FLOOR WASTE PIPING PLAN - TOILET RMS 189 & 191
SCALE: 1/4" = 1'-0"



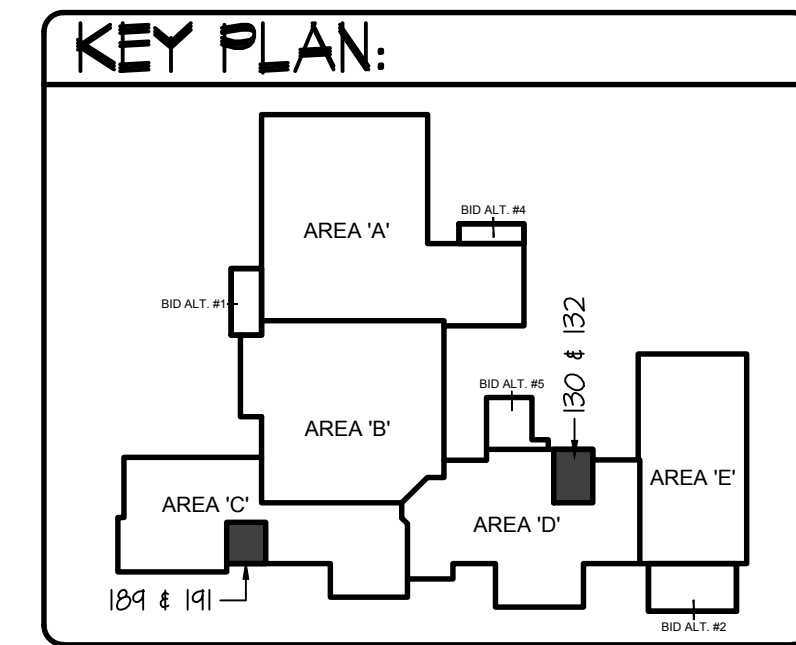
UNDER FLOOR WASTE PIPING PLAN - TOILET RMS 130 & 132
SCALE: 1/4" = 1'-0"



LARGE SCALE TOILET ROOMS 189 & 191
SCALE: 1/4" = 1'-0"



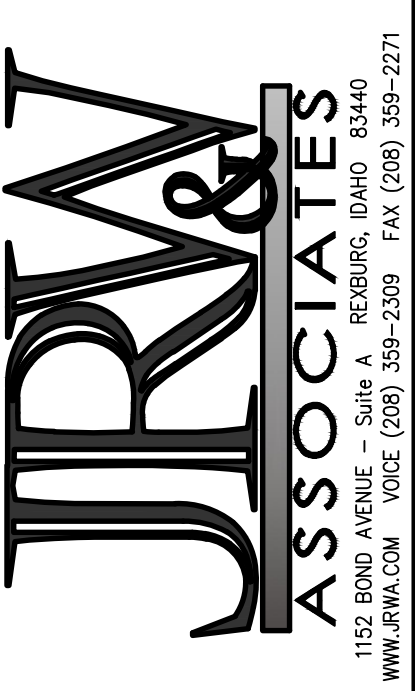
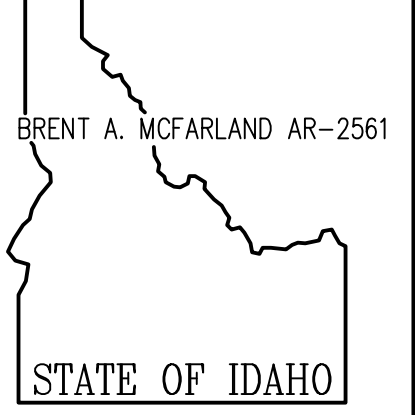
LARGE SCALE TOILET ROOMS 130 & 132
SCALE: 1/4" = 1'-0"



PLAN NOTES:

- 1 PROVIDE AND INSTALL ELECTRIC WATER HEATER AS SPECIFIED. REFER TO DETAIL EP3.1 FOR TYPICAL INSTALLATION AND PIPING CONNECTIONS.
- 2 PROVIDE AND INSTALL MULTI-DRAIN TRAP PRIMER AS SPECIFIED. TRAP PRIMER TO BE SURFACE MOUNTED ON WALL WITH 1/2" (PEX) COLD WATER LINE FOR EACH DRAIN SERVED. REFER TO DETAIL DP3.2 FOR TYPICAL INSTALLATION AND PIPING CONNECTIONS.
- 3 PROVIDE AND INSTALL EYE WASH STATION AT SINK. EYE WASH TO HAVE PUSH HANDLE OPERATOR WITH SNIVEL HEAD. REFER TO DETAIL HP3.1 FOR TYPICAL INSTALLATION. CONNECT TO ADJACENT FIXTURE COLD WATER LINE.
- 4 HOT, COLD AND HOT WATER REG. PIPING TO EXTEND INTO MECHANICAL WALKWAY ABOVE CORRIDOR. CONNECT PIPING TO ELECTRIC WATER HEATER ON WALKWAY. REFER TO SHEET PL3 FOR LOCATION OF WATER HEATER. REFER TO DETAIL EP3.1 FOR TYPICAL WATER HEATER INSTALLATION AND PIPING CONNECTIONS.
- 5 RUN 1/2" COLD WATER LINE (PEX) BELOW FLOOR FROM TRAP PRIMER TO FLOOR DRAIN OR FLOOR SINK. REFER TO DETAIL DP3.2 FOR TYPICAL PIPING CONNECTIONS TO TRAP PRIMER AND TO FLOOR DRAIN OR FLOOR SINK.
- 6 PROVIDE WATER HAMMER ARRESTOR FITTING ON COLD WATER LINE. SEE SPECIFICATIONS.

BID SET



- CONSULTANTS:**
- LANDSCAPE ARCHITECT
MEYER & ASSOCIATES
1805 South Woodruff
Idaho Falls, Idaho 83404
(208) 528-9004
 - CIVIL ENGINEERING
CONNECT ENGINEERING
1100 Halpin Dr.
Idaho Falls, Idaho 83405
(208) 681-8590
 - STRUCTURAL ENGINEERING
FROST STRUCTURAL ENGINEERING
1020 Lincoln Road
Idaho Falls, Idaho 83401
(208) 227-8404
Fax (208) 227-8405
 - MECHANICAL ENGINEERING
ENGINEERED SYSTEMS ASSOC.
1355 East Center Street
Pocatello, Idaho 83204
(208) 233-0501
Fax (208) 233-0529
 - ELECTRICAL ENGINEERING
PAME ENGINEERING INC.
1823 East Center St.
Pocatello, Idaho 83201
(208) 232-4430
Fax (208) 232-1435

ENTIRE BUILDING TO BE FIRE SPRINKLED TO MEET NFPA-13 CODE REQUIREMENTS. FIELD VERIFY LOCATIONS OF OTHER PIPING, DUCTWORK, ELECTRICAL CONDUITS, AND BUILDING STRUCTURE. COORDINATE FIRE SPRINKLER HEADS AND PIPING WITH ALL OTHER TRADES. FIRE PIPING TO GO AROUND ALL MECHANICAL DUCTWORK AND GRILLES THRU ROOF, ROOF HATCHES, ROOF DRAINS, ETC.

SUGAR - SALEM
SD #22
JUNIOR HIGH SCHOOL

PROJECT: SUGAR CITY, IDAHO

DRAWING TITLE: **LARGE SCALE PLUMBING PLANS**

REVISION:	
#	DATE COMMENT

DRAWN BY: M. JENSEN	JOB NO: 764
CHECKED BY: D. SUDNEEKS	DATE: APR '20
PLOT DATE: Apr 06, 2020	
DRAWING NO. FILE: 19099-P2.1.dwg	
P2.1	
OF	16

ORIGINAL DRAWING SIGNED BY: DWAYNE C. SUDNEEKS
DATE ORIGINAL SIGNED: Mar 05, 2020
ORIGINAL ON FILE AT ENGINEERED SYSTEMS ASSOCIATES
1355 EAST CENTER, POCATELLO, IDAHO 83201

Engineered Systems Associates

1355 EAST CENTER
POCATELLO, IDAHO 83201
PHONE: (208) 233-0501
FAX: (208) 233-0529
EMAIL: esa@engsystems.com
ESA JOB NUMBER: 19099

PROFESSIONAL ENGINEER
REGISTERED
5762
STATE OF IDAHO
DWAYNE C. SUDNEEKS