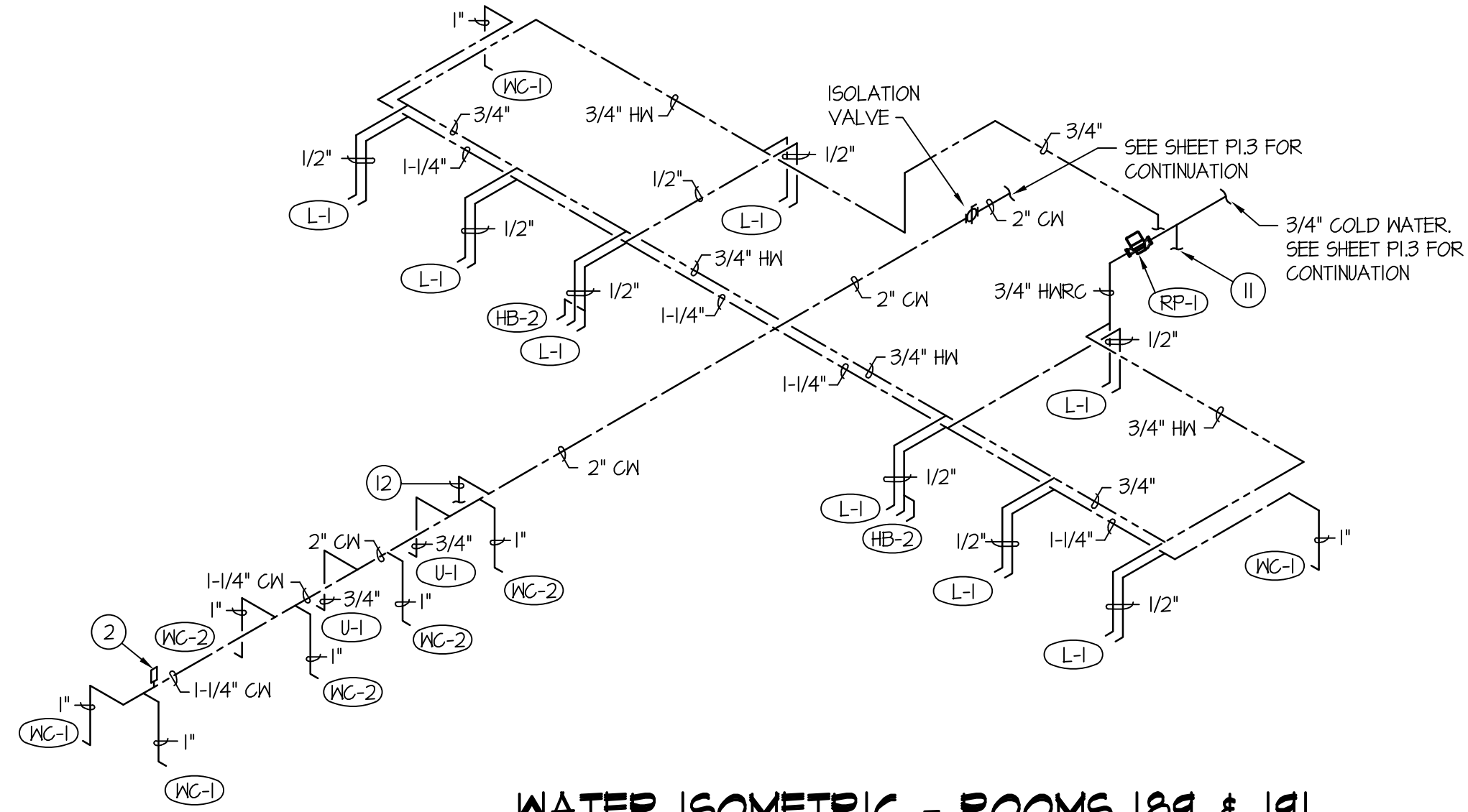
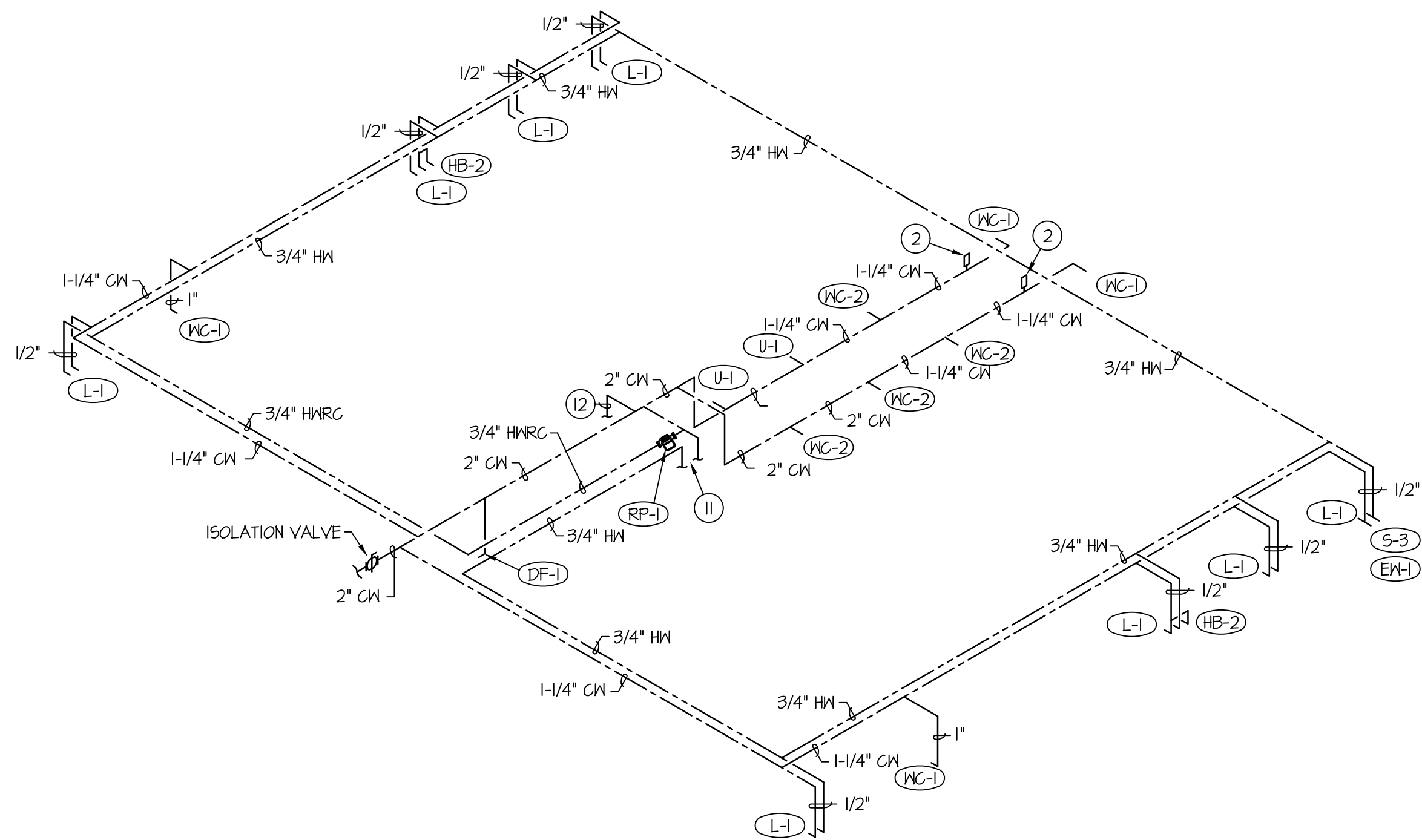


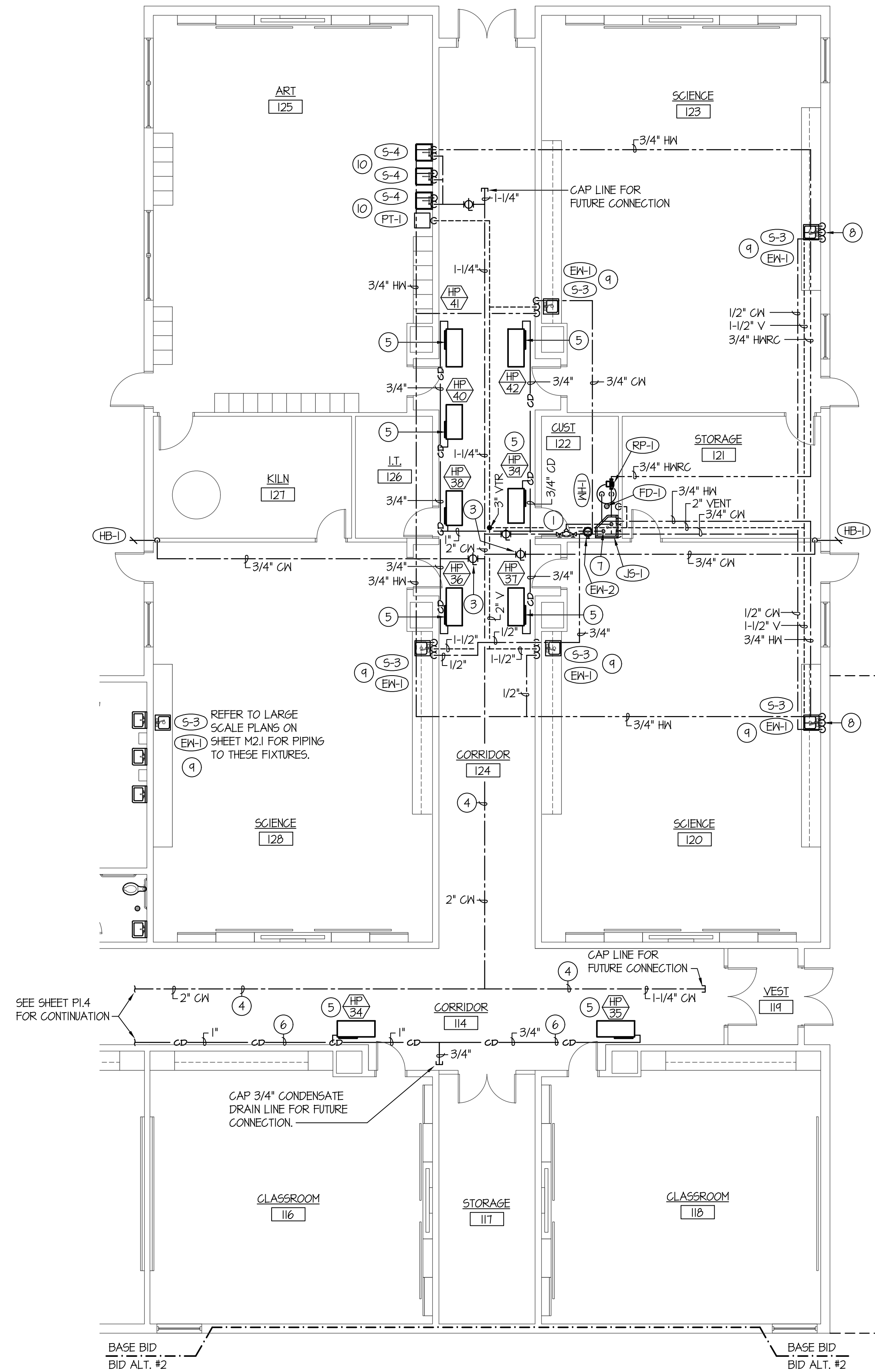
F:\19099\19099-P1.5.dwg Apr 06, 2020 - 2:04pm



**WATER ISOMETRIC - ROOMS 189 & 191**  
NO SCALE

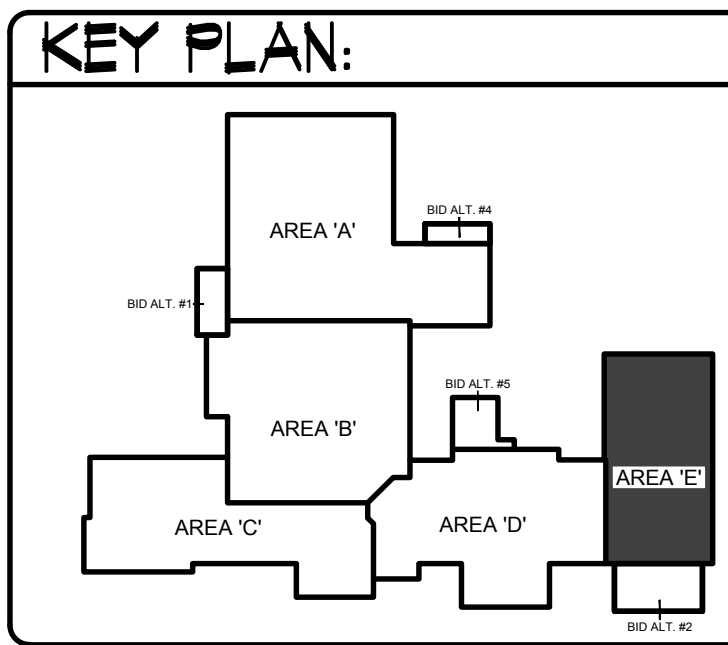


**WATER ISOMETRIC - ROOMS 130 & 132**  
NO SCALE



**AREA 'E' PLUMBING FLOOR PLAN**  
SCALE: 1/8" = 1'-0"

ENTIRE BUILDING TO BE FIRE SPRINKLED TO MEET NFPA-13 CODE REQUIREMENTS. FIELD VERIFY LOCATIONS OF OTHER PIPING, DUCTWORK, ELECTRICAL CONDUITS, AND BUILDING STRUCTURE. COORDINATE FIRE SPRINKLER HEADS AND PIPING WITH ALL OTHER TRADES. FIRE PIPING TO GO AROUND ALL MECHANICAL DUCTWORK AND GRILLES THRU ROOF, ROOF HATCHES, ROOF DRAINS, ETC.

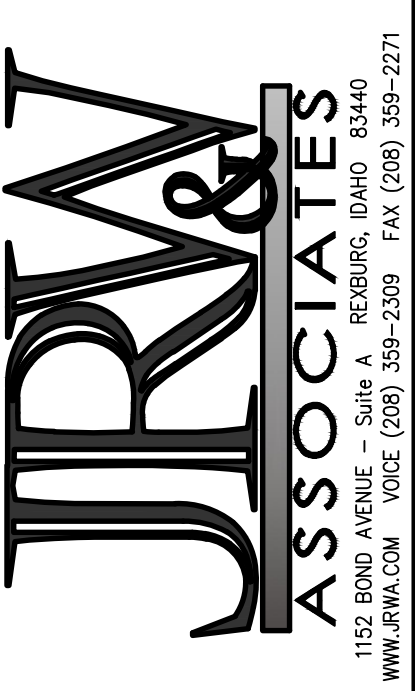


**PLAN NOTES:**

- 1 PROVIDE REDUCED PRESSURE BACK-FLOW PREVENTION DEVICE ON 1" COLD WATER LINE. MOUNT DEVICE BELOW CEILING AND UPSTREAM OF WATER HEATER. RUN DRAIN LINE TO JANITOR'S SINK. REFER TO DETAIL L/P3.1 FOR TYPICAL INSTALLATION. RUN PROTECTED HOT AND COLD WATER LINES TO ALL SCIENCE ROOM FIXTURES.
- 2 PROVIDE WATER HAMMER ARRESTOR FITTING ON COLD WATER PIPING. REFER TO SPECIFICATIONS.
- 3 PROVIDE SHUT-OFF VALVE IN 3/4" COLD WATER LINE SERVING EXTERIOR HOSE BIBB. LOCATE VALVE IN MECHANICAL WALKWAY AND LABEL AS HOSE BIBB SHUT-OFF VALVE.
- 4 RUN WATER PIPING IN MECHANICAL WALKWAY AS HIGH AS POSSIBLE. PROVIDE ISOLATION VALVE AT EACH TAKE-OFF. REFER TO TYPICAL SECTION AM2.2 FOR LOCATION OF WATER PIPING IN RELATIONSHIP TO MECHANICAL EQUIPMENT.
- 5 HEAT PUMP UNIT TO BE FURNISHED AND INSTALLED BY MECHANICAL CONTRACTOR. PLUMBING CONTRACTOR TO ROUGH-IN AND CONNECT 3/4" CONDENSATE DRAIN LINE TO EACH UNIT. PROVIDE TRAP AT EACH UNIT. REFER TO DETAIL B/P3.2 FOR TYPICAL PIPING CONNECTIONS.
- 6 RUN CONDENSATE DRAIN PIPING ALONG EDGE OF MECHANICAL WALKWAY. PIPING TO BE GRADED AT 1/4" PER FOOT SLOPE IN DIRECTION OF FLOW. SUPPORT PIPING FROM MEZZANINE DECK WITH UNISTRUT SUPPORTS SPACED AT 6'-0" INTERVALS.
- 7 DROP CONDENSATE DRAIN LINE DOWN IN ROOM AND TERMINATE AT JANITOR'S SINK AND/OR FLOOR DRAIN OR FLOOR SINK. REFER TO DETAIL K/P3.1.
- 8 DROP 1/2" HOT AND COLD WATER LINES AND 1-1/2" VENT DOWN IN EXTERIOR WALL. PIPING TO BE ON HEATED SIDE OF BUILDING ENVELOPE WITH RIGID INSULATING BOARD ON OUTSIDE OF PIPING TO PREVENT FREEZING. REFER TO DETAIL M/P3.1 FOR TYPICAL INSTALLATION OF PIPING IN EXTERIOR WALL.
- 9 PROVIDE AND INSTALL EYE WASH STATION AT SINK. EYE WASH TO HAVE PUSH HANDLE OPERATOR WITH SWIVEL HEAD. REFER TO DETAIL H/P3.1 FOR TYPICAL INSTALLATION. CONNECT TO ADJACENT FIXTURE COLD WATER LINE.
- 10 INSTALL ART ROOM SINKS AS SPECIFIED. RUN WASTE LINE FROM ALL (3) SINKS TO FLOOR MOUNTED PLASTER TRAP. PROVIDE FLOW CONTROL FITTING IN WASTE PIPING. REFER TO DETAIL M/P3.2 FOR TYPICAL PIPING CONNECTIONS.
- 11 3/4" HOT WATER AND 3/4" COLD WATER LINES DOWN TO WATER HEATER. REFER TO DETAIL E/P3.1 FOR TYPICAL INSTALLATION AND PIPING CONNECTIONS.
- 12 3/4" COLD WATER LINE DOWN TO TRAP PRIMER IN WALL. REFER TO DETAIL D/P3.2 FOR TYPICAL INSTALLATION AND PIPING CONNECTIONS.

**BID SET**

BRENT A. MCFARLAND AR-2561  
STATE OF IDAHO



CONSULTANTS:  
LANDSCAPE ARCHITECT  
WEAVER & ASSOCIATES  
1805 South Woodruff  
Idaho Falls, Idaho 83404  
(208) 528-9004  
CIVIL ENGINEERING  
CONNECT ENGINEERING  
1100 Halpern Dr.  
Idaho Falls, Idaho 83405  
(208) 681-8590  
STRUCTURAL ENGINEERING  
PROST STRUCTURAL ENGINEERING  
1020 Lincoln Road  
Idaho Falls, Idaho 83401  
(208) 227-8404  
Fax (208) 227-8405  
MECHANICAL ENGINEERING  
ENGINEERED SYSTEMS ASSOC.  
1355 East Center Street  
Pocatello, Idaho 83201  
(208) 233-0501  
Fax (208) 233-0529  
ELECTRICAL ENGINEERING  
PANE ENGINEERING INC.  
1823 East Center St.  
Pocatello, Idaho 83201  
(208) 232-4439  
Fax (208) 232-1435

PROJECT: SUGAR - SALEM JUNIOR HIGH SCHOOL  
SUGAR CITY IDAHO  
DRAWING TITLE: PLUMBING FLOOR PLAN - AREA 'E'

REVISION:		
#	DATE	COMMENT

DRAWN BY: M. JENSEN	JOB NO: 764
CHECKED BY: D. SUDNEEKS	DATE: APR '20
PLOT DATE: Apr 06, 2020	
DRAWING NO. FILE: 19099-P1.5.dwg	
P1.5	
OF	16

ORIGINAL DRAWING SIGNED BY: DWAYNE C. SUDNEEKS  
DATE ORIGINAL SIGNED: Mar 05, 2020  
ORIGINAL ON FILE AT ENGINEERED SYSTEMS ASSOCIATES  
1355 EAST CENTER, POCATELLO, IDAHO 83201

**Engineered Systems Associates**  
1355 EAST CENTER  
POCATELLO, IDAHO 83201  
PHONE: (208) 233-0501  
FAX: (208) 233-0529  
EMAIL: esa@engsystems.com  
ESA JOB NUMBER: 19099