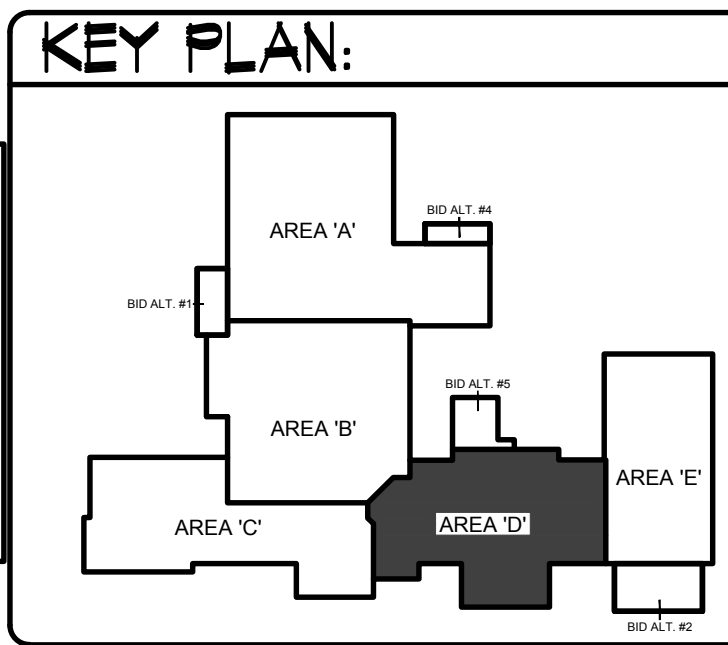


AREA 'D' PLUMBING FLOOR PLAN

ENTIRE BUILDING TO BE FIRE SPRINKLED TO MEET NFPA-13 CODE REQUIREMENTS. FIELD VERIFY LOCATIONS OF OTHER PIPING, DUCTWORK, ELECTRICAL CONDUITS, AND BUILDING STRUCTURE. COORDINATE FIRE SPRINKLER HEADS AND PIPING WITH ALL OTHER TRADES. FIRE PIPING TO GO AROUND ALL MECHANICAL DUCTWORK AND GRILLES THRU ROOF, ROOF HATCHES, ROOF DRAINS, ETC.



PLAN NOTES:

- 1 PROVIDE AND INSTALL ROOF DRAIN AND OVERFLOW DRAIN AS SPECIFIED. MOUNT DRAINS IN ROOF SUMP. REFER TO ARCHITECTURAL ROOF PLAN FOR LOCATIONS OF ROOF SUMPS. REFER TO DETAIL C/P3.1 FOR TYPICAL INSTALLATION.
- 2 EXTEND ROOF OVERFLOW PIPING THRU EXTERIOR WALL AS HIGH AS POSSIBLE. CONNECT TO WALL FLANGE. DO NOT LOCATE WALL FLANGE OVER ANY DOORWAYS OR WINDOWS.
- 3 KEEP ROOF DRAIN AND OVERFLOW DRAIN PIPING AS HIGH AS POSSIBLE. UTILIZE ROOF JOIST SPACE WHEREVER POSSIBLE. PIPING TO BE GRADED AT 1/8" SLOPE PER FOOT. COORDINATE PIPE ROUTING WITH BUILDING STRUCTURE AND WITH OTHER PIPING AND EQUIPMENT.
- 4 RUN WATER PIPING IN MECHANICAL WALKWAY AS HIGH AS POSSIBLE. PROVIDE ISOLATION VALVE AT EACH TAKE-OFF. REFER TO TYPICAL SECTION A/M2.2 FOR LOCATION OF WATER PIPING IN RELATIONSHIP TO MECHANICAL EQUIPMENT.
- 5 HEAT PUMP UNIT TO BE FURNISHED AND INSTALLED BY MECHANICAL CONTRACTOR. PLUMBING CONTRACTOR TO ROUGH-IN AND CONNECT 3/4" CONDENSATE DRAIN LINE TO EACH UNIT. PROVIDE TRAP AT EACH UNIT. REFER TO DETAIL B/P3.2 FOR TYPICAL PIPING CONNECTIONS.
- 6 RUN (2) CONDENSATE DRAIN LINES ALONG EDGE OF MECHANICAL WALKWAY. PIPING TO BE GRADED AT 1/4" PER FOOT SLOPE IN DIRECTION OF FLOW. SUPPORT PIPING FROM MEZZANINE DECK WITH UNISTRUT SUPPORTS SPACED AT 6'-0" INTERVALS.
- 7 DROP CONDENSATE DRAIN LINE DOWN IN ROOM AND TERMINATE AT JANITOR'S SINK AND/OR FLOOR DRAIN OR FLOOR SINK. REFER TO DETAIL K/P3.1 FOR TYPICAL INSTALLATION.
- 8 PROVIDE AND INSTALL EYE WASH STATION AS SPECIFIED. EYE WASH TO HAVE PUSH HANDLE OPERATOR. REFER TO DETAIL G/P3.1 FOR TYPICAL INSTALLATION.
- 9 PROVIDE SHUT-OFF VALVE IN 3/4" COLD WATER LINE SERVING EXTERIOR HOSE BIBB. LOCATE VALVE IN MECHANICAL WALKWAY AND LABEL AS HOSE BIBB SHUT-OFF VALVE.

BID SET

BRENT A. MCFARLAN AR-2561

STATE OF IDAHO

TRW & ASSOCIATES

1152 BOND AVENUE - Suite A
REDBURG, IDAHO 83440
PHONE: (208) 358-2309 FAX: (208) 358-2271
WWW.TRWA.COM

- CONSULTANTS:**
- LANDSCAPE ARCHITECT**
REYER & ASSOCIATES
1805 South Woodruff
Idaho Falls, Idaho 83404
(208) 227-4644
(208) 528-9504
- CIVIL ENGINEERING**
CONNECT ENGINEERING
1159 Highway 10
Idaho Falls, Idaho 83405
(208) 681-8590
- STRUCTURAL ENGINEERING**
FROST STRUCTURAL ENGINEERING
1020 Lincoln Road
Idaho Falls, Idaho 83401
(208) 227-4644
Fax: (208) 227-8405
- MECHANICAL ENGINEERING**
ENGINEERED SYSTEMS ASSOC.
1355 East Center Street
Pocatello, Idaho 83204
(208) 233-0501
Fax: (208) 233-0529
- ELECTRICAL ENGINEERING**
PANE ENGINEERING INC.
1823 East Center St.
Pocatello, Idaho 83201
(208) 232-4430
Fax: (208) 232-1435

PROJECT: **SUGAR - SALEM JUNIOR HIGH SCHOOL**

DRAWING TITLE: **PLUMBING FLOOR PLAN - AREA 'D'**

LOCATION: SUGAR CITY, IDAHO

REVISION:		
#	DATE	COMMENT

DRAWN BY: M. JENSEN	JOB NO: 764
CHECKED BY: D. SUDNEEKS	DATE: APR '20
PLOT DATE: Apr 06, 2020	
DRAWING NO. FILE: 19099-P1.4.dwg	
P1.4	
OF	16

ORIGINAL DRAWING SIGNED BY: DWAYNE C. SUDNEEKS
DATE ORIGINAL SIGNED: Mar 05, 2020
ORIGINAL ON FILE AT ENGINEERED SYSTEMS ASSOCIATES
1355 EAST CENTER, POCATELLO, IDAHO 83201

Engineered Systems Associates

1355 EAST CENTER
POCATELLO, IDAHO 83201
PHONE: (208) 233-0501
FAX: (208) 233-0529
EMAIL: esa@engsystems.com
ESA JOB NUMBER: 19099

PROFESSIONAL ENGINEER REGISTERED
5762
STATE OF IDAHO
DWAYNE C. SUDNEEKS