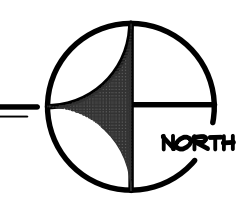


AREA 'C' PLUMBING FLOOR PLAN
SCALE: 1/8" = 1'-0"



PLAN NOTES:

- 1 PROVIDE AND INSTALL ROOF DRAIN AND OVERFLOW DRAIN AS SPECIFIED. MOUNT DRAIN IN ROOF SUMP. REFER TO ARCHITECTURAL ROOF PLAN FOR LOCATIONS OF ROOF SUMPS. REFER TO DETAIL C/P3.1 FOR TYPICAL INSTALLATION.
- 2 EXTEND ROOF OVERFLOW PIPING THRU EXTERIOR WALL AS HIGH AS POSSIBLE. CONNECT TO WALL FLANGE. DO NOT LOCATE WALL FLANGE OVER ANY DOORWAYS OR WINDOWS. REFER TO DETAIL C/P3.2.
- 3 KEEP ROOF DRAIN AND OVERFLOW DRAIN PIPING AS HIGH AS POSSIBLE. UTILIZE ROOF JOIST SPACE WHEREVER POSSIBLE. PIPING TO BE GRADED AT 1/8" SLOPE PER FOOT. COORDINATE PIPE ROUTING WITH BUILDING STRUCTURE AND WITH OTHER PIPING AND EQUIPMENT.
- 4 DROP 4" ROOF DRAIN LINE DOWN IN CUSTODIAL ROOM. EXTEND THRU FLOOR. REFER TO SHEET P1.0 FOR CONTINUATION OF PIPING. COORDINATE PIPING WITH OTHER PIPING AND FIXTURES.
- 5 RUN WATER PIPING IN MECHANICAL WALKWAY AS HIGH AS POSSIBLE. PROVIDE ISOLATION VALVE AT EACH TAKE-OFF. REFER TO TYPICAL SECTION AM2.2 FOR LOCATION OF WATER PIPING IN RELATIONSHIP TO MECHANICAL EQUIPMENT.
- 6 HEAT PUMP UNIT TO BE FURNISHED AND INSTALLED BY MECHANICAL CONTRACTOR. PLUMBING CONTRACTOR TO ROUGH-IN AND CONNECT 3/4" CONDENSATE DRAIN LINE TO EACH UNIT. PROVIDE TRAP AT EACH UNIT. REFER TO DETAIL E/P3.2 FOR TYPICAL PIPING CONNECTIONS.
- 7 RUN (2) CONDENSATE DRAIN LINES ALONG EDGE OF MECHANICAL WALKWAY. PIPING TO BE GRADED AT 1/4" PER FOOT SLOPE IN DIRECTION OF FLOW. SUPPORT PIPING FROM MEZZANINE DECK WITH UNISTRUT SUPPORTS SPACED AT 6'-0" INTERVALS.
- 8 DROP CONDENSATE DRAIN LINE DOWN IN ROOM AND TERMINATE AT JANITOR'S SINK AND/OR FLOOR DRAIN OR FLOOR SINK. REFER TO DETAIL K/P3.1.
- 9 PROVIDE AND INSTALL EYE WASH STATION AS SPECIFIED. EYE WASH TO HAVE PUSH HANDLE OPERATOR. REFER TO DETAIL G/P3.1 FOR TYPICAL INSTALLATION.

BID SET

BRENT A. MCFARLAND AR-2561

STATE OF IDAHO

TRM & ASSOCIATES

1152 BOND AVENUE - Suite A REDBURG, IDAHO 83440
WWW.TRMA.COM VOICE (208) 359-2309 FAX (208) 359-2271

- CONSULTANTS:**
- LANDSCAPE ARCHITECT
REINER & ASSOCIATES
1605 South Woodruff
Idaho Falls, Idaho 83404
(208) 528-9504
 - CIVIL ENGINEERING
CONNECT ENGINEERING
1120 Halpern Dr.
Idaho Falls, Idaho 83405
(208) 681-8590
 - STRUCTURAL ENGINEERING
FROST STRUCTURAL ENGINEERING
1020 Lincoln Road
Idaho Falls, Idaho 83401
(208) 227-8404
Fax (208) 227-8405
 - MECHANICAL ENGINEERING
ENGINEERED SYSTEMS ASSOC.
1355 East Center Street
Pocatello, Idaho 83204
(208) 233-0501
Fax (208) 233-0529
 - ELECTRICAL ENGINEERING
PANE ENGINEERING INC.
1823 East Center St.
Pocatello, Idaho 83201
(208) 232-4439
Fax (208) 232-1435

SUGAR - SALEM
SD #322
JUNIOR HIGH SCHOOL

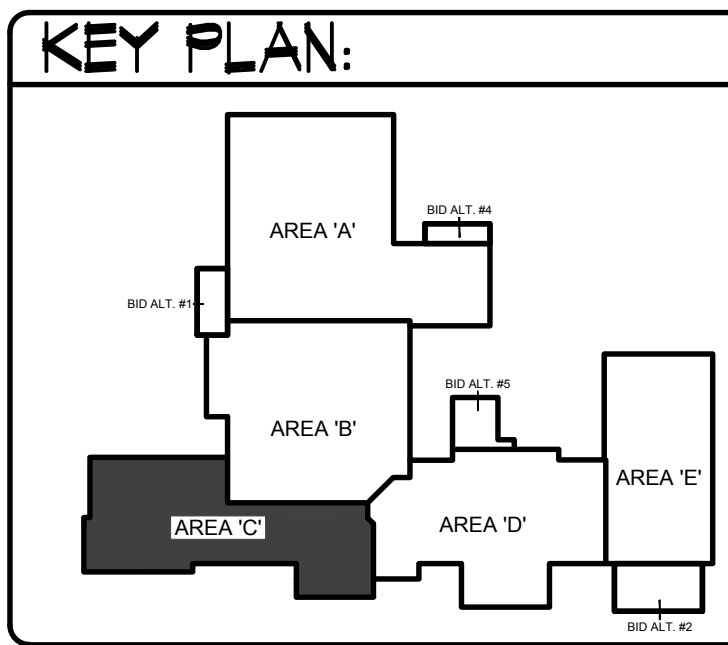
SUGAR CITY IDAHO

PLUMBING FLOOR PLAN - AREA 'C'

REVISION:		
#	DATE	COMMENT

DRAWN BY: M. JENSEN	JOB NO: 764
CHECKED BY: D. SUDNEEKS	DATE: APR '20
PLOT DATE: Apr 06, 2020	
DRAWING NO. FILE: 19099-P1.3.dwg	
P1.3	
OF	16

ENTIRE BUILDING TO BE FIRE SPRINKLED TO MEET NFPA-13 CODE REQUIREMENTS. FIELD VERIFY LOCATIONS OF OTHER PIPING, DUCTWORK, ELECTRICAL CONDUITS, AND BUILDING STRUCTURE. COORDINATE FIRE SPRINKLER HEADS AND PIPING WITH ALL OTHER TRADES. FIRE PIPING TO GO AROUND ALL MECHANICAL DUCTWORK AND GRILLES THRU ROOF, ROOF HATCHES, ROOF DRAINS, ETC.



ORIGINAL DRAWING SIGNED BY: DWAYNE C. SUDNEEKS
DATE ORIGINAL SIGNED: Mar 05, 2020
ORIGINAL ON FILE AT ENGINEERED SYSTEMS ASSOCIATES
1355 EAST CENTER, POCATELLO, IDAHO 83201

Professional Engineer
REGISTERED
5762
STATE OF IDAHO
DWAYNE C. SUDNEEKS

Engineered Systems Associates
1355 EAST CENTER
POCATELLO, IDAHO 83201
PHONE: (208) 233-0501
FAX: (208) 233-0529
EMAIL: esa@engsystems.com
ESA JOB NUMBER: 19099