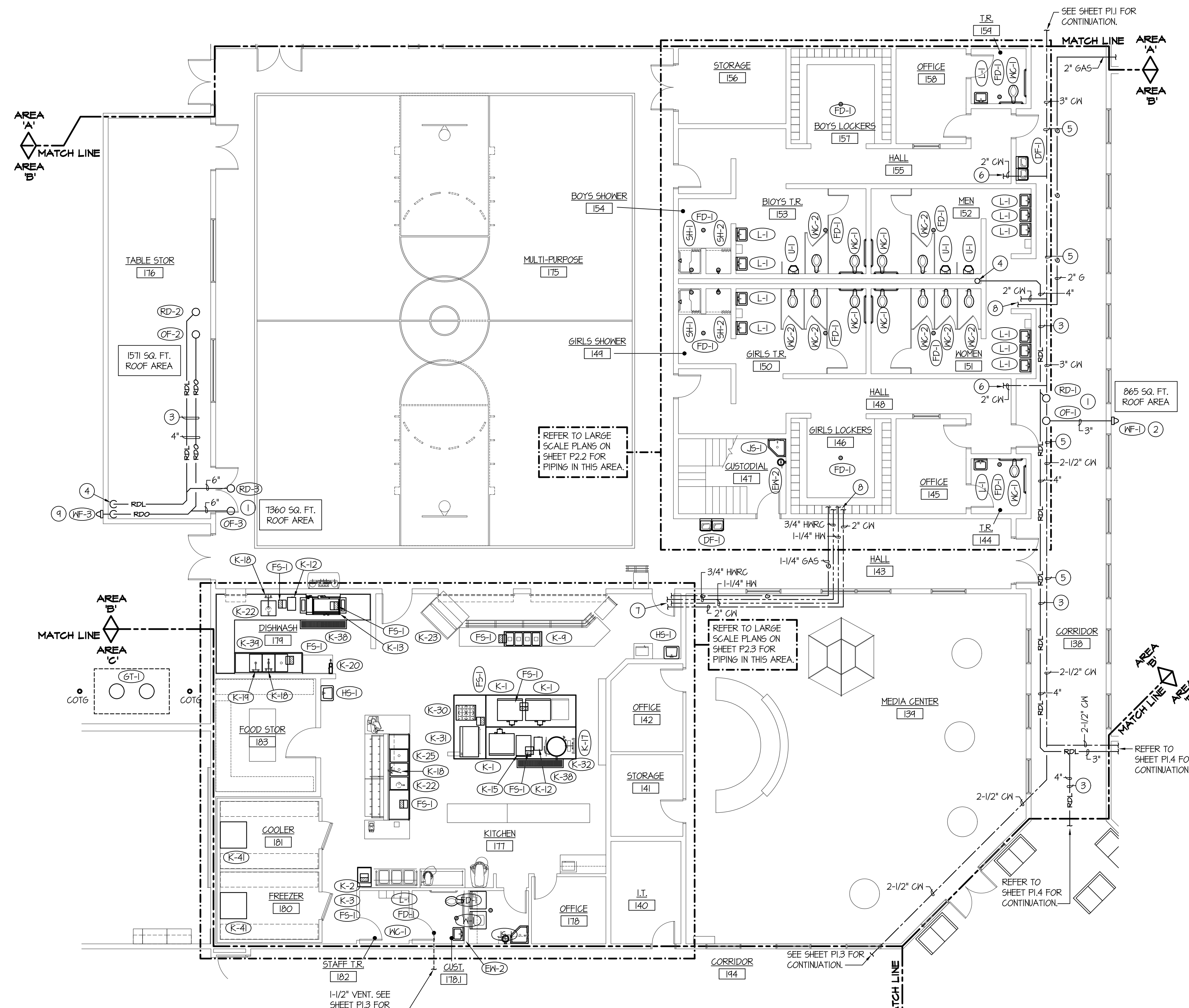
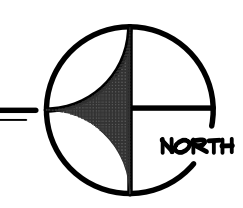


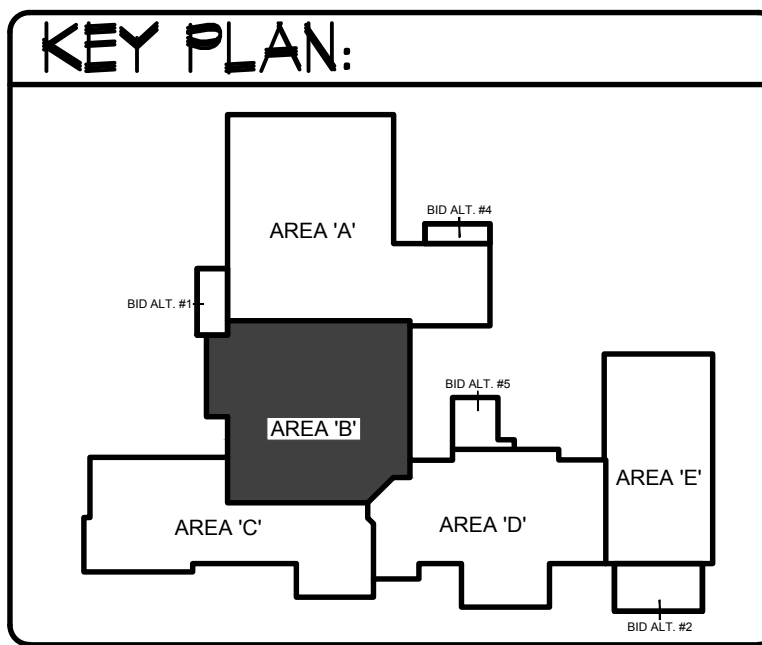
F:\V\190994\Sugar_Salem_Jr_High\190994-P1.2.dwg Apr 06, 2020 - 2:05pm



AREA 'B' PLUMBING FLOOR PLAN
SCALE: 1/8" = 1'-0"



ENTIRE BUILDING TO BE FIRE SPRINKLED TO MEET NFPA-13 CODE REQUIREMENTS. FIELD VERIFY LOCATIONS OF OTHER PIPING, DUCTWORK, ELECTRICAL CONDUITS, AND BUILDING STRUCTURE. COORDINATE FIRE SPRINKLER HEADS AND PIPING WITH ALL OTHER TRADES. FIRE PIPING TO GO AROUND ALL MECHANICAL DUCTWORK AND GRILLES THRU ROOF, ROOF HATCHES, ROOF DRAINS, ETC.



- PLAN NOTES:**
- 1 PROVIDE AND INSTALL ROOF DRAIN AND OVERFLOW DRAIN AS SPECIFIED. MOUNT DRAINS IN ROOF SUMP. REFER TO ARCHITECTURAL ROOF PLAN FOR LOCATIONS OF ROOF SUMPS. REFER TO DETAIL C/P3.1 FOR TYPICAL INSTALLATION.
 - 2 EXTEND ROOF OVERFLOW PIPING THRU EXTERIOR WALL AS HIGH AS POSSIBLE. CONNECT TO WALL FLANGE. DO NOT LOCATE WALL FLANGE OVER ANY DOORWAYS OR WINDOWS.
 - 3 KEEP ROOF DRAIN AND OVERFLOW DRAIN PIPING AS HIGH AS POSSIBLE. UTILIZE ROOF JOIST SPACE WHEREVER POSSIBLE. PIPING TO BE GRADED AT 1/8" SLOPE PER FOOT. COORDINATE PIPE ROUTING WITH BUILDING STRUCTURE AND WITH OTHER PIPING AND EQUIPMENT.
 - 4 RISE 6" ROOF DRAIN LINE UP IN CHASE FROM BELOW FLOOR. CONNECT TO 4" ROOF DRAIN PIPING ABOVE CEILING OF MAIN LEVEL. AND RUN AS SHOWN. CONTINUE 6" PIPING UP TO MEZZANINE FLOOR. REFER TO LARGE SCALE PLAN ON SHEET M2.1 FOR CONTINUATION OF PIPING AND FOR ROOF DRAIN LOCATIONS ABOVE MEZZANINE FLOOR.
 - 5 RUN WATER PIPING IN CEILING SPACE OVER CORRIDOR 138 AS SHOWN. SUPPORT WATER PIPING FROM ROOF STRUCTURE WITH UNISTRUT PIPE SUPPORTS.
 - 6 REFER TO LARGE SCALE PLAN ON SHEET P2.2 FOR CONTINUATION OF PIPING AND FOR ISOLATION VALVES.
 - 7 REFER TO LARGE SCALE KITCHEN PLAN ON SHEET P2.3 FOR CONTINUATION OF PIPING.
 - 8 REFER TO LARGE SCALE MEZZANINE MECHANICAL ROOM ON SHEET M2.1 FOR CONTINUATION OF PIPING.
 - 9 DROP OVERFLOW DRAIN LINE DOWN IN CORNER OF ROOM AND EXTEND OUT TO WALL FLANGE AT 12" ABOVE FINISHED GRADE. REFER TO DETAIL J/P3.2 FOR TYPICAL INSTALLATION.

BID SET

BRENT A. MCFARLAND AR-2561

STATE OF IDAHO

TRW & ASSOCIATES

1152 BOND AVENUE - Suite A REBERG, IDAHO 83440
WWW.TRWA.COM VOICE (208) 359-2309 FAX (208) 359-2271

- CONSULTANTS:**
- LANDSCAPE ARCHITECT**
REYER & ASSOCIATES
1805 South Woodruff
Mesa Falls, Idaho 83404
(208) 227-8404
(208) 528-9504
- CIVIL ENGINEERING**
CONNECT ENGINEERING
1120 Halpin Dr.
Mesa Falls, Idaho 83405
(208) 681-8590
- STRUCTURAL ENGINEERING**
FROST STRUCTURAL ENGINEERING
1020 Lincoln Road
Mesa Falls, Idaho 83401
(208) 227-8404
Fax (208) 227-8405
- MECHANICAL ENGINEERING**
ENGINEERED SYSTEMS ASSOC.
1355 East Center Street
Pocatello, Idaho 83204
(208) 233-0501
Fax (208) 233-0529
- ELECTRICAL ENGINEERING**
PANE ENGINEERING INC.
1823 East Center St.
Pocatello, Idaho 83201
(208) 232-4430
Fax (208) 232-1435

SUGAR - SALEM
SD #322
JUNIOR HIGH SCHOOL

PROJECT: SUGAR CITY IDAHO

DRAWING TITLE: **PLUMBING FLOOR PLAN - AREA 'B'**

REVISION:		
#	DATE	COMMENT

DRAWN BY: M. JENSEN	JOB NO: 764
CHECKED BY: D. SUDNEEKS	DATE: APR '20
PLOT DATE: Apr 06, 2020	
DRAWING NO. FILE: 19099-P1.2.dwg	
P1.2	
OF	16

ORIGINAL DRAWING SIGNED BY: DWAYNE C. SUDNEEKS
DATE ORIGINAL SIGNED: Mar 05, 2020
ORIGINAL ON FILE AT ENGINEERED SYSTEMS ASSOCIATES
1355 EAST CENTER, POCATELLO, IDAHO 83201

Professional Engineer
REGISTERED
5762
STATE OF IDAHO
DWAYNE C. SUDNEEKS

Engineered Systems Associates
1355 EAST CENTER
POCATELLO, IDAHO 83201
PHONE: (208) 233-0501
FAX: (208) 233-0529
EMAIL: esa@engsystems.com
ESA JOB NUMBER: 19099