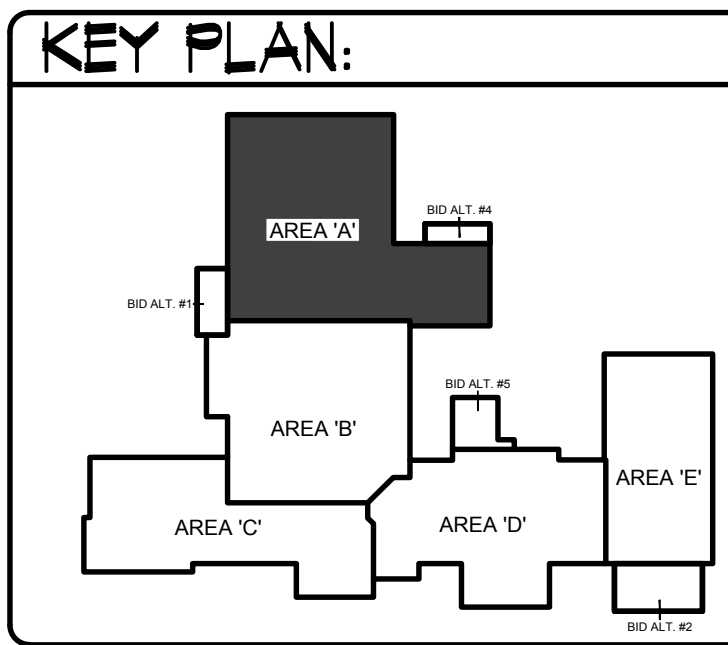


AREA 'A' PLUMBING FLOOR PLAN
SCALE: 1/8" = 1'-0"

ENTIRE BUILDING TO BE FIRE SPRINKLED TO MEET NFPA-13 CODE REQUIREMENTS. FIELD VERIFY LOCATIONS OF OTHER PIPING, DUCTWORK, ELECTRICAL CONDUITS, AND BUILDING STRUCTURE. COORDINATE FIRE SPRINKLER HEADS AND PIPING WITH ALL OTHER TRADES. FIRE PIPING TO GO AROUND ALL MECHANICAL DUCTWORK AND GRILLES THRU ROOF, ROOF HATCHES, ROOF DRAINS, ETC.



- PLAN NOTES:**
- PROVIDE AND INSTALL ROOF DRAIN AND OVERFLOW DRAIN AS SPECIFIED. MOUNT DRAINS IN ROOF SUMP. REFER TO ARCHITECTURAL ROOF PLAN FOR LOCATIONS OF ROOF SUMPS. REFER TO DETAIL C/P3.1 FOR TYPICAL INSTALLATION.
 - DROP ROOF OVERFLOW PIPING DOWN IN CHASE OR ROOM. EXTEND THRU EXTERIOR WALL AT 12" ABOVE GRADE AND CONNECT TO WALL FLANGE.
 - KEEP ROOF DRAIN AND OVERFLOW DRAIN PIPING AS HIGH AS POSSIBLE. UTILIZE ROOF JOIST SPACE WHEREVER POSSIBLE. PIPING TO BE GRADED AT 1/8" SLOPE PER FOOT. COORDINATE PIPE ROUTING WITH BUILDING STRUCTURE AND WITH OTHER PIPING AND EQUIPMENT.
 - DROP ROOF DRAIN DOWN IN CHASE. EXTEND THRU FLOOR. REFER TO SHEET P1.0 FOR CONTINUATION OF PIPING.
 - RISE 6" FIRE LINE UP THRU FLOOR AND CONNECT TO FIRE RISER AND ALARM VALVE. REFER TO DETAIL E/P3.3 FOR TYPICAL INSTALLATION OF FIRE RISER.
 - RISE 3" COLD WATER LINES UP THRU FLOOR AND CONNECT TO PRESSURE REDUCING STATION. REFER TO DETAIL N/P3.1 FOR TYPICAL INSTALLATION OF PRV STATION.
 - REFER TO DETAIL E/P3.1 FOR TYPICAL PIPING CONNECTIONS, VALVES, EXPANSION TANK, ETC. TO WATER HEATER.
 - GAS METER FURNISHED AND INSTALLED BY LOCAL GAS COMPANY. SIZE METER FOR 6,200,000 BTU WITH 2 PSI DISCHARGE PRESSURE. (ACTUAL GAS LOAD IS 6,038,668 BTU WITH 250' DEVELOPED LENGTH.)
 - PROVIDE SHUT-OFF VALVE IN 3/4" COLD WATER LINE SERVING EXTERIOR HOSE BIBB. LOCATE VALVE IN RISE ROOM AND LABEL AS HOSE BIBB SHUT-OFF VALVE.

- CONSULTANTS:**
- LANDSCAPE ARCHITECT
HEWER & ASSOCIATES
1605 South Woodruff
Idaho Falls, Idaho 83404
(208) 528-9504
 - CIVIL ENGINEERING
CONNECT ENGINEERING
1100 Harrison Dr.
Idaho Falls, Idaho 83405
(208) 681-8590
 - STRUCTURAL ENGINEERING
FROST STRUCTURAL ENGINEERING
1020 Lincoln Road
Idaho Falls, Idaho 83401
(208) 227-4644
Fax (208) 227-8405
 - MECHANICAL ENGINEERING
ENGINEERED SYSTEMS ASSOC.
1355 East Center Street
Pocatello, Idaho 83204
(208) 233-0501
Fax (208) 233-0529
 - PAINT ENGINEERING INC.
1823 East Center St.
Pocatello, Idaho 83201
(208) 232-4439
Fax (208) 232-1435

REVISION:

#	DATE	COMMENT

ORIGINAL DRAWING SIGNED BY: DWAYNE C. SUDNEEKS
DATE ORIGINAL SIGNED: Mar 05, 2020
ORIGINAL ON FILE AT ENGINEERED SYSTEMS ASSOCIATES
1355 EAST CENTER, POCATELLO, IDAHO 83201

Engineered Systems Associates
1355 EAST CENTER
POCATELLO, IDAHO 83201
PHONE: (208) 233-0501
FAX: (208) 233-0529
EMAIL: esa@engsystems.com
ESA JOB NUMBER: 19099

PROFESSIONAL ENGINEER
REGISTERED
5762
STATE OF IDAHO
DWAYNE C. SUDNEEKS

BID SET
BRENT A. MCFARLAND AR-2561
STATE OF IDAHO

TRV & ASSOCIATES
1152 BOND AVENUE - Suite A
REDBURG, IDAHO 83440
WWW.TRVA.COM VOICE (208) 358-2309 FAX (208) 358-2271

CONSULTANTS:

- LANDSCAPE ARCHITECT
HEWER & ASSOCIATES
1605 South Woodruff
Idaho Falls, Idaho 83404
(208) 528-9504
- CIVIL ENGINEERING
CONNECT ENGINEERING
1100 Harrison Dr.
Idaho Falls, Idaho 83405
(208) 681-8590
- STRUCTURAL ENGINEERING
FROST STRUCTURAL ENGINEERING
1020 Lincoln Road
Idaho Falls, Idaho 83401
(208) 227-4644
Fax (208) 227-8405
- MECHANICAL ENGINEERING
ENGINEERED SYSTEMS ASSOC.
1355 East Center Street
Pocatello, Idaho 83204
(208) 233-0501
Fax (208) 233-0529
- PAINT ENGINEERING INC.
1823 East Center St.
Pocatello, Idaho 83201
(208) 232-4439
Fax (208) 232-1435

**SUGAR - SALEM
SD #322
JUNIOR HIGH SCHOOL**

PROJECT: SUGAR CITY IDAHO

PLUMBING FLOOR PLAN - AREA 'A'

DRAWING TITLE: SUGAR CITY IDAHO

REVISION:

#	DATE	COMMENT

DRAWN BY: M. JENSEN JOB NO: 764
CHECKED BY: D. SUDNEEKS DATE: APR '20
PLOT DATE: Apr 06, 2020

DRAWING NO. FILE: 19099-P1.1.dwg
P.1
OF 16