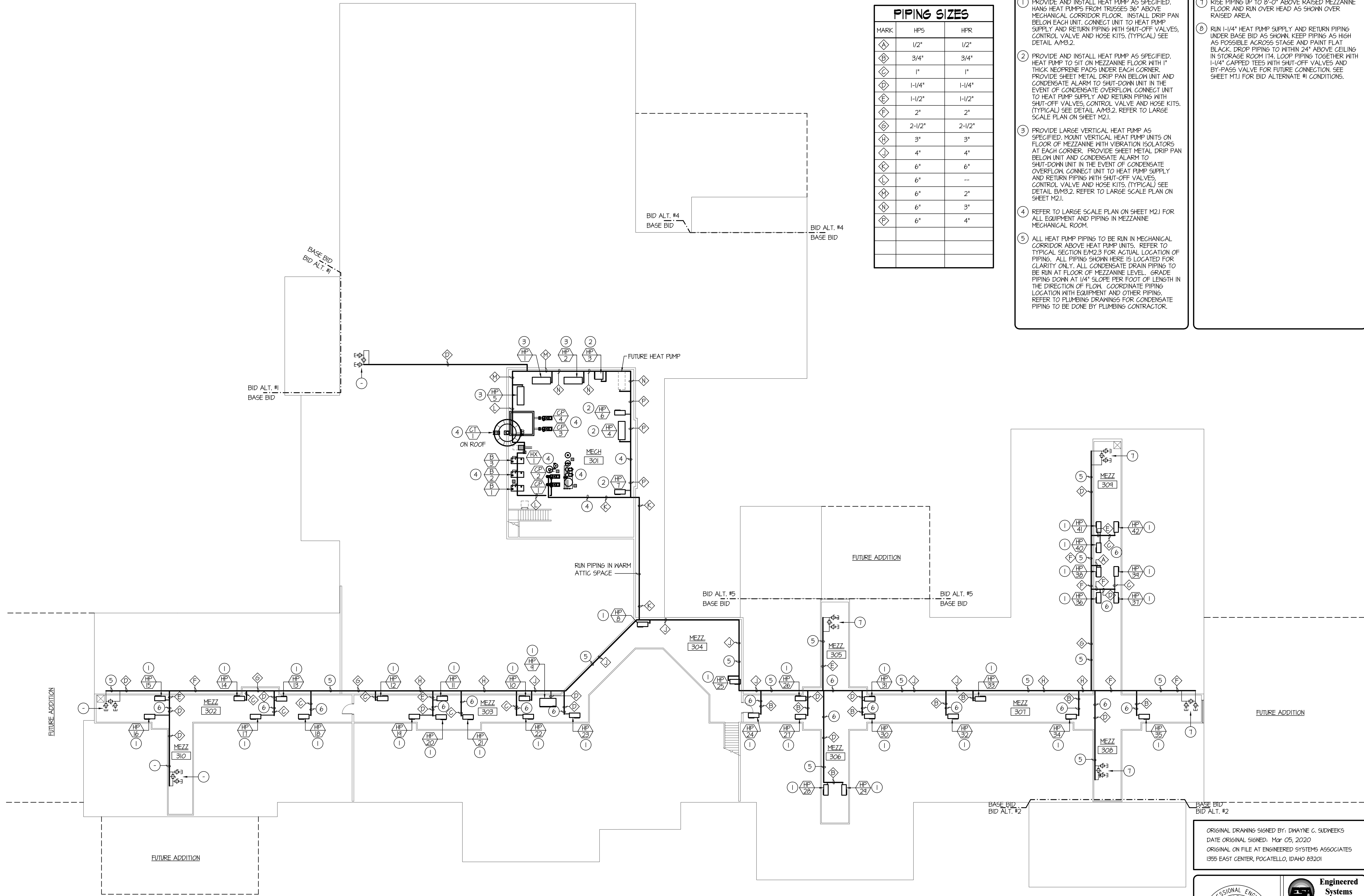


F:\N\10044\Sugar_Salem Jr. High\10044-MI.6.dwg Apr 06, 2020 - 2:10pm

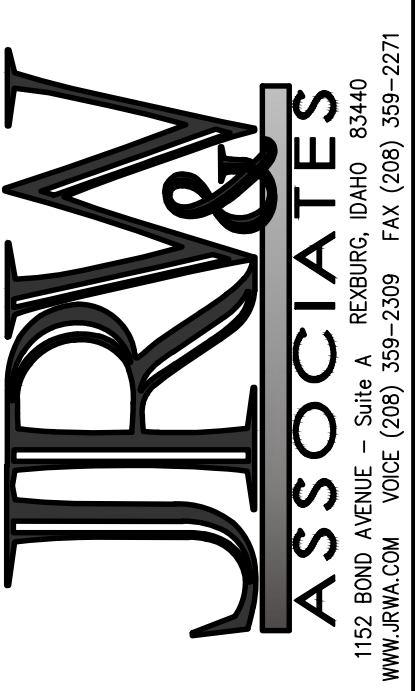


PIPING SIZES		
MARK	HPS	HR
A	1/2"	1/2"
B	3/4"	3/4"
C	1"	1"
D	1-1/4"	1-1/4"
E	1-1/2"	1-1/2"
F	2"	2"
G	2-1/2"	2-1/2"
H	3"	3"
I	4"	4"
J	6"	6"
K	6"	--
L	6"	2"
M	6"	3"
N	6"	4"

- PLAN NOTES:**
- PROVIDE AND INSTALL HEAT PUMP AS SPECIFIED. HANG HEAT PUMPS FROM TRUSSES 36" ABOVE MECHANICAL CORRIDOR FLOOR. INSTALL DRIP PAN BELOW EACH UNIT. CONNECT UNIT TO HEAT PUMP SUPPLY AND RETURN PIPING WITH SHUT-OFF VALVES, CONTROL VALVE AND HOSE KITS. (TYPICAL) SEE DETAIL A-M3.2.
 - PROVIDE AND INSTALL HEAT PUMP AS SPECIFIED. HEAT PUMP TO SIT ON MEZZANINE FLOOR WITH 1" THICK NEOPRENE PADS UNDER EACH CORNER. PROVIDE SHEET METAL DRIP PAN BELOW UNIT AND CONDENSATE ALARM TO SHUT-DOWN UNIT IN THE EVENT OF CONDENSATE OVERFLOW. CONNECT UNIT TO HEAT PUMP SUPPLY AND RETURN PIPING WITH SHUT-OFF VALVES, CONTROL VALVE AND HOSE KITS. (TYPICAL) SEE DETAIL A-M3.2. REFER TO LARGE SCALE PLAN ON SHEET M2.1.
 - PROVIDE LARGE VERTICAL HEAT PUMP AS SPECIFIED. MOUNT VERTICAL HEAT PUMP UNITS ON FLOOR OF MEZZANINE WITH VIBRATION ISOLATORS AT EACH CORNER. PROVIDE SHEET METAL DRIP PAN BELOW UNIT AND CONDENSATE ALARM TO SHUT-DOWN UNIT IN THE EVENT OF CONDENSATE OVERFLOW. CONNECT UNIT TO HEAT PUMP SUPPLY AND RETURN PIPING WITH SHUT-OFF VALVES, CONTROL VALVE AND HOSE KITS. (TYPICAL) SEE DETAIL B-M3.2. REFER TO LARGE SCALE PLAN ON SHEET M2.1.
 - REFER TO LARGE SCALE PLAN ON SHEET M2.1 FOR ALL EQUIPMENT AND PIPING IN MEZZANINE MECHANICAL ROOM.
 - ALL HEAT PUMP PIPING TO BE RUN IN MECHANICAL CORRIDOR ABOVE HEAT PUMP UNITS. REFER TO TYPICAL SECTION E-M2.3 FOR ACTUAL LOCATION OF PIPING. ALL PIPING SHOWN HERE IS LOCATED FOR CLARITY ONLY. ALL CONDENSATE DRAIN PIPING TO BE RUN AT FLOOR OF MEZZANINE LEVEL. GRADE PIPING DOWN AT 1/4" SLOPE PER FOOT OF LENGTH IN THE DIRECTION OF FLOW. COORDINATE PIPING LOCATION WITH EQUIPMENT AND OTHER PIPING. REFER TO PLUMBING DRAWINGS FOR CONDENSATE PIPING TO BE DONE BY PLUMBING CONTRACTOR.

- PLAN NOTES:**
- RISE PIPING UP TO 8'-0" ABOVE RAISED MEZZANINE FLOOR AND RUN OVER HEAD AS SHOWN OVER RAISED AREA.
 - RUN 1-1/4" HEAT PUMP SUPPLY AND RETURN PIPING UNDER BASE BID AS SHOWN. KEEP PIPING AS HIGH AS POSSIBLE ACROSS STAGE AND PAINT FLAT BLACK. DROP PIPING TO WITHIN 24" ABOVE CEILING IN STORAGE ROOM 174. LOOP PIPING TOGETHER WITH 1-1/4" CAPPED TEES WITH SHUT-OFF VALVES AND BY-PASS VALVE FOR FUTURE CONNECTION. SEE SHEET M2.1 FOR BID ALTERNATE #1 CONDITIONS.

BID SET
BRENT A. MCFARLAND AR-2561
STATE OF IDAHO



- CONSULTANTS:**
- LANDSCAPE ARCHITECT
MEYER & ASSOCIATES
1805 South Woodruff
Idaho Falls, Idaho 83404
(208) 528-9504
 - CIVIL ENGINEERING
CONNECT ENGINEERING
1190 Halpin Dr.
Idaho Falls, Idaho 83405
(208) 681-8590
 - STRUCTURAL ENGINEERING
FROST STRUCTURAL ENGINEERING
1020 Lincoln Road
Idaho Falls, Idaho 83401
(208) 227-8484
Fax (208) 227-8405
 - MECHANICAL ENGINEERING
ENGINEERED SYSTEMS ASSOC.
1355 East Center Street
Pocatello, Idaho 83204
(208) 233-0501
Fax (208) 233-0529
 - ELECTRICAL ENGINEERING
PANE ENGINEERING INC.
1823 East Center St.
Pocatello, Idaho 83201
(208) 232-4438
Fax (208) 232-1435

PROJECT: SUGAR - SALEM SD #322 JUNIOR HIGH SCHOOL
SUGAR CITY IDAHO
DRAWING TITLE: MEZZANINE LEVEL HYDRONIC PIPING PLAN

REVISION:		
#	DATE	COMMENT

DRAWN BY: M. JENSEN JOB NO: 764
CHECKED BY: D. SUDNEEKS DATE: APR '20
PLOT DATE: Apr 06, 2020
DRAWING NO. MI.6
FILE: 19099-MI.6.dwg
OF 17

MEZZANINE LEVEL HYDRONIC PIPING PLAN
SCALE: 1/16" = 1'-0"
NORTH

ORIGINAL DRAWING SIGNED BY: DWAYNE C. SUDNEEKS
DATE ORIGINAL SIGNED: Mar 05, 2020
ORIGINAL ON FILE AT ENGINEERED SYSTEMS ASSOCIATES
1355 EAST CENTER, POCATELLO, IDAHO 83201

Engineered Systems Associates
1355 EAST CENTER
POCATELLO, IDAHO 83201
PHONE: (208) 233-0501
FAX: (208) 233-0529
EMAIL: esa@engsystems.com
ESA JOB NUMBER: 19099