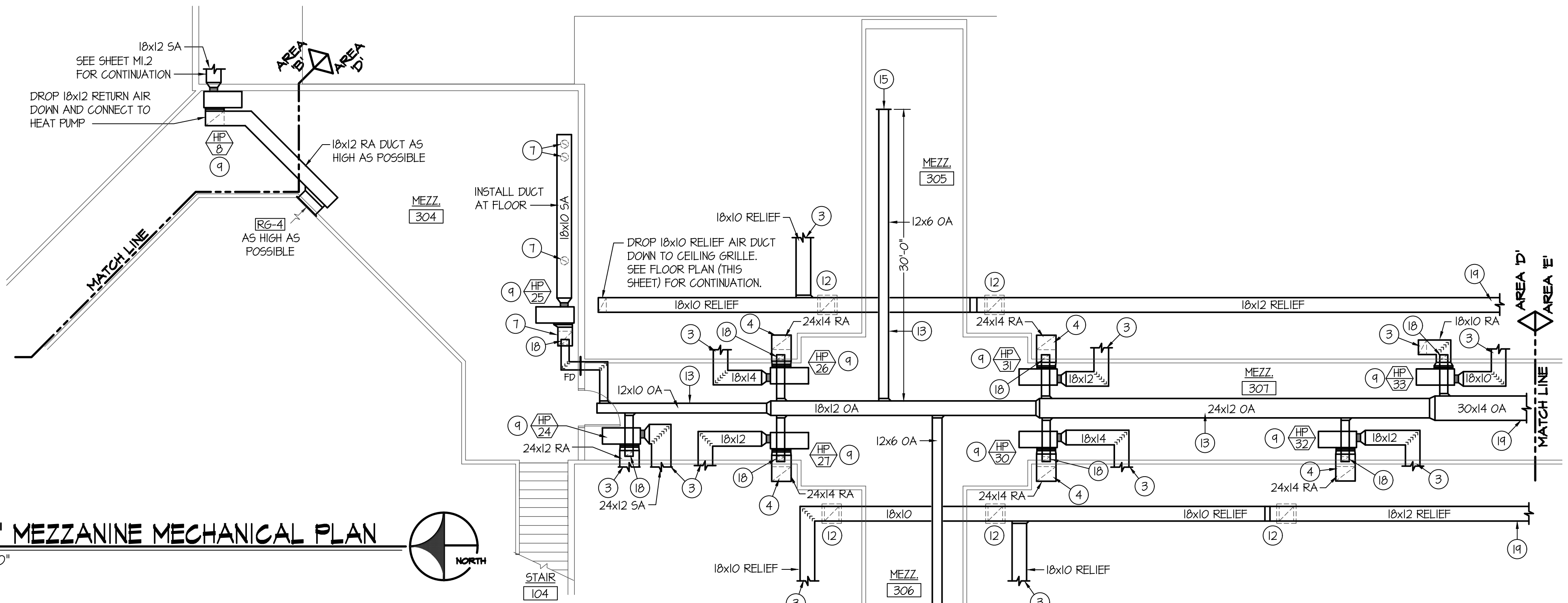
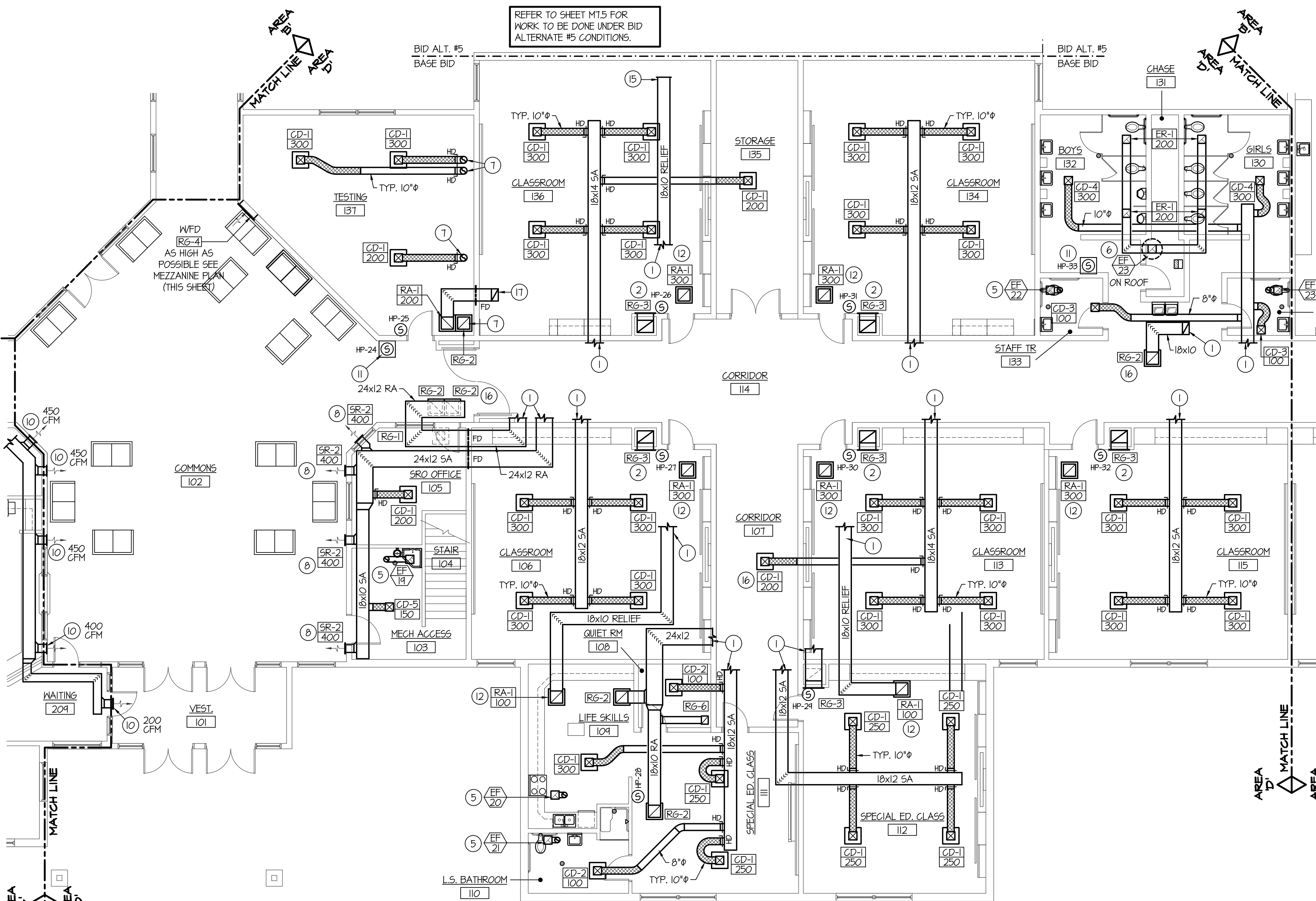
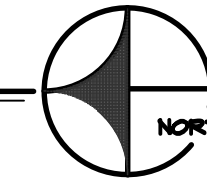


F:\19099\04 Sugar Salem Jr. High\19099-MI.4.dwg Apr 06, 2020 - 2:10pm



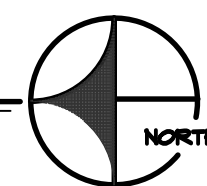
AREA 'D' MEZZANINE MECHANICAL PLAN

SCALE: 1/8" = 1'-0"



AREA 'D' MECHANICAL FLOOR PLAN

SCALE: 1/8" = 1'-0"



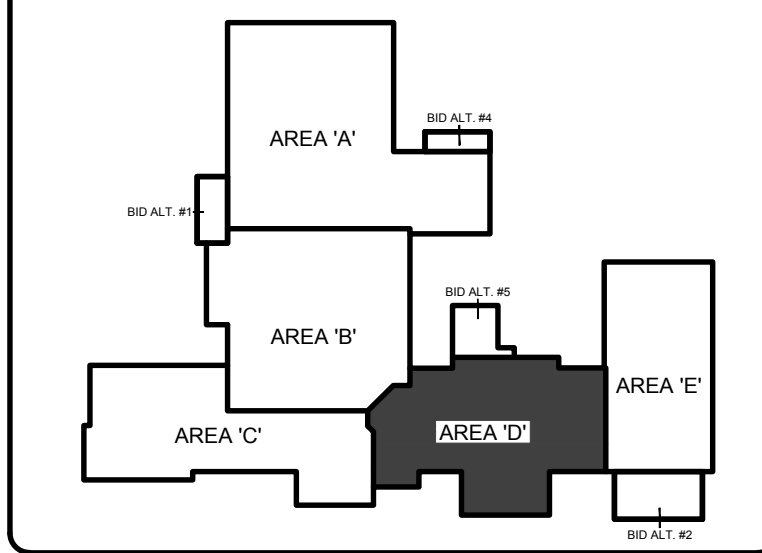
PLAN NOTES:

- 1 REFER TO MEZZANINE WALKWAY LOCATED (THIS SHEET) FOR CONTINUATION OF DUCTWORK.
- 2 MOUNT RETURN GRILLE AT 6" ABOVE FLOOR. RISE 24x14 RETURN AIR DUCT UP IN CHASE. REFER TO MEZZANINE WALKWAY FOR CONTINUATION OF DUCT AND CONNECTION TO CORRESPONDING HEAT PUMP.
- 3 REFER TO FLOOR PLAN (THIS SHEET) FOR CONTINUATION OF DUCTWORK ABOVE ROOMS.
- 4 DROP 24x14 RETURN AIR DUCT DOWN IN CHASE AND CONNECT TO RETURN GRILLE NEAR FLOOR. REFER TO FLOOR PLAN (THIS SHEET) FOR CONTINUATION.
- 5 PROVIDE AND INSTALL CEILING MOUNTED EXHAUST FAN AS SPECIFIED. RISE 6" DUCT UP THRU ROOF WITH WEATHER CAP. REFER TO DETAIL HM-3 FOR TYPICAL INSTALLATION.
- 6 PROVIDE AND INSTALL ROOF MOUNTED EXHAUST FAN AS SPECIFIED. MOUNT ON ROOF CURB WITH BACK-DRAFT DAMPER LOCATED AT ROOF LEVEL. REFER TO DETAIL 6/M-3 FOR TYPICAL INSTALLATION.
- 7 RISE 10" SUPPLY AIR BRANCH DUCTS AND 18x10 RETURN DUCT UP THRU MEZZANINE FLOOR ABOVE. CONNECT TO CORRESPONDING HEAT PUMP.
- 8 KEEP DUCTWORK AS LOW AS POSSIBLE ABOVE LAY-IN CEILING. EXTEND BRANCH DUCTS THRU WALL AND CONNECT TO SIDEMALL REGISTER. PROVIDE FIRE DAMPER IN DUCTWORK AT WALL PENETRATION.
- 9 PROVIDE AND INSTALL WATER SOURCE HEAT PUMP AS SPECIFIED. MOUNT UNIT ON MEZZANINE PLATFORM WITH 2" HIGH SHEET METAL DRAIN PAN. PROVIDE DUCT TRANSITIONS AS REQUIRED TO CONNECT HEAT PUMP. REFER TO SHEET M1.6 FOR HEAT PUMP PIPING. DROP SUPPLY AND RETURN LINES DOWN AT EACH UNIT LOCATION AND CONNECT WITH 2-WAY AUTOMATIC CONTROL VALVE, SHUT-OFF VALVES AND HOSE KITS. REFER TO DETAIL A/M-3.2 FOR TYPICAL PIPING CONNECTIONS.
- 10 REFER TO SHEET M1.3 FOR DUCTWORK AND REGISTERS THRU WALL. BALANCE TO CFM AS SHOWN.
- 11 MOUNT SENSOR ON WALL WITH LOCKING METAL COVER.
- 12 RUN RELIEF AIR DUCT AS HIGH AS POSSIBLE IN CEILING SPACE. DROP 12" FLEXIBLE DUCT DOWN AND CONNECT TO CEILING MOUNTED GRILLE. PROVIDE BALANCING DAMPER IN ROUND DUCT AND BALANCE TO CFM AS INDICATED ON FLOOR PLAN.
- 13 RUN OUTSIDE AIR DUCT AS HIGH AS POSSIBLE ABOVE MEZZANINE WALKWAY.
- 14 INSTALL RELIEF AIR GRILLE IN CEILING AS SPECIFIED. REFER TO MEZZANINE MECHANICAL PLAN (THIS SHEET) FOR DUCTWORK CONNECTED TO GRILLE. BALANCE TO CFM AS SHOWN.

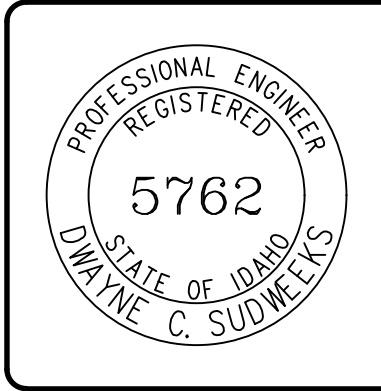
PLAN NOTES:

- 15 CAP 10x6 OUTSIDE AIR DUCT FOR FUTURE CONNECTION. (SEE SHEET 1.5)
- 16 ALL GRILLES IN CORRIDOR CEILING TO HAVE FIRE DAMPER AT GRILLE. CONNECT TO FIRE ALARM SYSTEM.
- 17 RISE 18x10 RELIEF DUCT UP. SEE MEZZANINE PLAN (THIS SHEET) FOR CONTINUATION.
- 18 DROP 10x6 OUTSIDE AIR DUCT DOWN AND CONNECT TO RETURN AIR DUCT NEAR UNIT. PROVIDE MOTORIZED DAMPER, DUCT ACCESS DOOR, AND MANUAL BALANCING DAMPER IN EACH DUCT. REFER TO HEAT PUMP SCHEDULE FOR REQUIRED CFM TO EACH HEAT PUMP. REFER TO DETAIL B/M-3.2 FOR TYPICAL DAMPER INSTALLATION.
- 19 SEE SHEET M1.5 FOR CONTINUATION OF DUCTWORK.

KEY PLAN:



ORIGINAL DRAWING SIGNED BY: DWAYNE C. SUDNEEKS
 DATE ORIGINAL SIGNED: Mar 05, 2020
 ORIGINAL ON FILE AT ENGINEERED SYSTEMS ASSOCIATES
 1955 EAST CENTER, POCATELLO, IDAHO 83201



Engineered Systems Associates
 1355 EAST CENTER
 POCATELLO, IDAHO 83201
 PHONE: (208) 233-0501
 FAX: (208) 233-0529
 EMAIL: esa@engsystems.com
 ESA JOB NUMBER: 19099



CONSULTANTS:
 LANDSCAPE ARCHITECT
 REYER & ASSOCIATES
 1805 South Woodruff
 Idaho Falls, Idaho 83404
 (208) 328-9504
 CIVIL ENGINEERING
 CONNECT ENGINEERING
 1100 Harrison St.
 Idaho Falls, Idaho 83405
 (208) 681-8590
 STRUCTURAL ENGINEERING
 FROST STRUCTURAL ENGINEERING
 1020 Lincoln Road
 Idaho Falls, Idaho 83401
 (208) 227-8464
 Fax: (208) 227-8405
 MECHANICAL ENGINEERING
 ENGINEERED SYSTEMS ASSOC.
 1355 East Center Street
 Pocatello, Idaho 83204
 (208) 233-0501
 Fax: (208) 233-0529
 ELECTRICAL ENGINEERING
 PANE ENGINEERING INC.
 1833 East Center St.
 Pocatello, Idaho 83201
 (208) 232-4430
 Fax: (208) 232-1435

PROJECT: SUGAR - SALEM JUNIOR HIGH SCHOOL
 SUGAR CITY, IDAHO
 DRAWING TITLE: MECHANICAL FLOOR PLAN - AREA 'D'

REVISION:	
#	DATE COMMENT

DRAWN BY: M. JENSEN	JOB NO: 764
CHECKED BY: D. SUDNEEKS	DATE: APR '20
PLOT DATE: Apr 06, 2020	
DRAWING NO. MI.4	
OF 17	