

**PLAN NOTES:**

- 1 REFER TO MEZZANINE WALKWAY LOCATED (THIS SHEET) FOR CONTINUATION OF DUCTWORK.
- 2 MOUNT RETURN GRILLE AT 6" ABOVE FLOOR. RISE 24x14 RETURN AIR DUCT UP IN CHASE. REFER TO MEZZANINE WALKWAY FOR CONTINUATION OF DUCT AND CONNECTION TO CORRESPONDING HEAT PUMP.
- 3 REFER TO FLOOR PLAN (THIS SHEET) FOR CONTINUATION OF DUCTWORK ABOVE ROOMS.
- 4 REFER TO AREA 'B' FLOOR PLAN ON SHEET M1.2 FOR CONTINUATIONS OF DUCTWORK ABOVE ROOMS.
- 5 DROP 24x14 RETURN AIR DUCT DOWN IN CHASE AND CONNECT TO RETURN GRILLE NEAR FLOOR. REFER TO FLOOR PLAN (THIS SHEET) FOR CONTINUATION.
- 6 PROVIDE AND INSTALL ROOF MOUNTED EXHAUST FAN AS SPECIFIED. MOUNT ON ROOF CURB WITH BACK-DRAFT DAMPER LOCATED AT ROOF LEVEL. REFER TO DETAIL 5/M.3.1 FOR TYPICAL INSTALLATION.
- 7 PROVIDE AND INSTALL RANGE HOOD BELOW UPPER CABINETS. RISE 4" EXHAUST VENT UP THRU MILLWORK AND EXTEND THRU ROOF WITH ROOF CAP.
- 8 PROVIDE AND INSTALL CEILING MOUNTED EXHAUST FAN AS SPECIFIED. RISE 6" DUCT UP THRU ROOF WITH WEATHER CAP. REFER TO DETAIL 5/M.3.1 FOR TYPICAL INSTALLATION.
- 9 PROVIDE AND INSTALL WATER SOURCE HEAT PUMP AS SPECIFIED. MOUNT UNIT ABOVE MEZZANINE PLATFORM WITH 2" HIGH SHEET METAL DRAIN PAN. SUPPORT FROM ROOF STRUCTURE. PROVIDE DUCT TRANSITIONS AS REQUIRED TO CONNECT HEAT PUMP. REFER TO SHEET M1.6 FOR HEAT PUMP PIPING. DROP SUPPLY AND RETURN LINES DOWN AT EACH UNIT LOCATION AND CONNECT WITH 2-WAY AUTOMATIC CONTROL VALVE, SHUT-OFF VALVES AND HOSE KITS. REFER TO DETAIL A.M.2.2 FOR TYPICAL PIPING CONNECTIONS.
- 10 KEEP DUCTWORK AS LOW AS POSSIBLE ABOVE LAY-IN CEILINGS. EXTEND BRANCH DUCTS THRU WALL AND CONNECT TO SIDEWALL REGISTER. PROVIDE FIRE DAMPER IN DUCTWORK AT WALL PENETRATION.
- 11 INSTALL RELIEF AIR GRILLE IN CEILING AS SPECIFIED. REFER TO MEZZANINE MECHANICAL PLAN (THIS SHEET) FOR DUCTWORK CONNECTED TO GRILLE. BALANCE TO CFM AS SHOWN.
- 12 RISE RELIEF AIR DUCT UP AS HIGH AS POSSIBLE TO CROSS MEZZANINE WALKWAY.
- 13 RUN RELIEF AIR DUCT AS HIGH AS POSSIBLE IN CEILING SPACE. DROP 12" FLEXIBLE DUCT DOWN AND CONNECT TO CEILING MOUNTED GRILLE. PROVIDE BALANCING DAMPER IN ROUND DUCT AND BALANCE TO CFM AS INDICATED ON FLOOR PLAN.
- 14 RUN OUTSIDE AIR DUCT AS HIGH AS POSSIBLE ABOVE MEZZANINE WALKWAY.
- 15 DROP 10x6 OUTSIDE AIR DUCT DOWN AND CONNECT TO RETURN AIR DUCT NEAR UNIT. PROVIDE MOTORIZED DAMPER, DUCT ACCESS DOOR, AND MANUAL BALANCING DAMPER IN EACH DUCT. REFER TO HEAT PUMP SCHEDULE FOR REQUIRED CFM TO EACH HEAT PUMP. REFER TO DETAIL 5/M.3.1 FOR TYPICAL DAMPER INSTALLATION.
- 16 ALL GRILLES IN CORRIDOR CEILING TO HAVE FIRE DAMPER AT GRILLE. CONNECT TO FIRE ALARM SYSTEM.

#	DATE	COMMENT

ORIGINAL DRAWING SIGNED BY: DWAYNE C. SUDNEEKS  
 DATE ORIGINAL SIGNED: Mar 05, 2020  
 ORIGINAL ON FILE AT ENGINEERED SYSTEMS ASSOCIATES  
 1355 EAST CENTER, POCATELLO, IDAHO 83201

**Professional Engineer**  
 REGISTERED  
 5762  
 STATE OF IDAHO  
 DWAYNE C. SUDNEEKS

**Engineered Systems Associates**  
 1355 EAST CENTER  
 POCATELLO, IDAHO 83201  
 PHONE: (208) 233-0501  
 FAX: (208) 233-0529  
 EMAIL: esa@engsystems.com  
 ESA JOB NUMBER: 19099

**BID SET**

BRENT A. MCFARLAND AR-2561

STATE OF IDAHO

**TRVA ASSOCIATES**

1152 BOND AVENUE - Suite A REBERG, IDAHO 83440  
 VOICE (208) 359-2309 FAX (208) 359-2271  
 WWW.TRVA.COM

- CONSULTANTS:**
- LANDSCAPE ARCHITECT  
 HANSEN & ASSOCIATES  
 1805 South Woodruff  
 Idaho Falls, Idaho 83404  
 (208) 528-9504
  - CIVIL ENGINEERING  
 CONNECT ENGINEERING  
 1100 Highway 17  
 Idaho Falls, Idaho 83405  
 (208) 681-8500
  - STRUCTURAL ENGINEERING  
 PROST STRUCTURAL ENGINEERING  
 1020 Lincoln Road  
 Idaho Falls, Idaho 83401  
 (208) 227-4644  
 Fax (208) 227-8405
  - MECHANICAL ENGINEERING  
 ENGINEERED SYSTEMS ASSOC.  
 1355 East Center Street  
 Pocatello, Idaho 83201  
 Fax (208) 233-0529
  - ELECTRICAL ENGINEERING  
 PAVNE ENGINEERING INC.  
 1833 East Center St.  
 Pocatello, Idaho 83201  
 (208) 232-4438  
 Fax (208) 232-1435

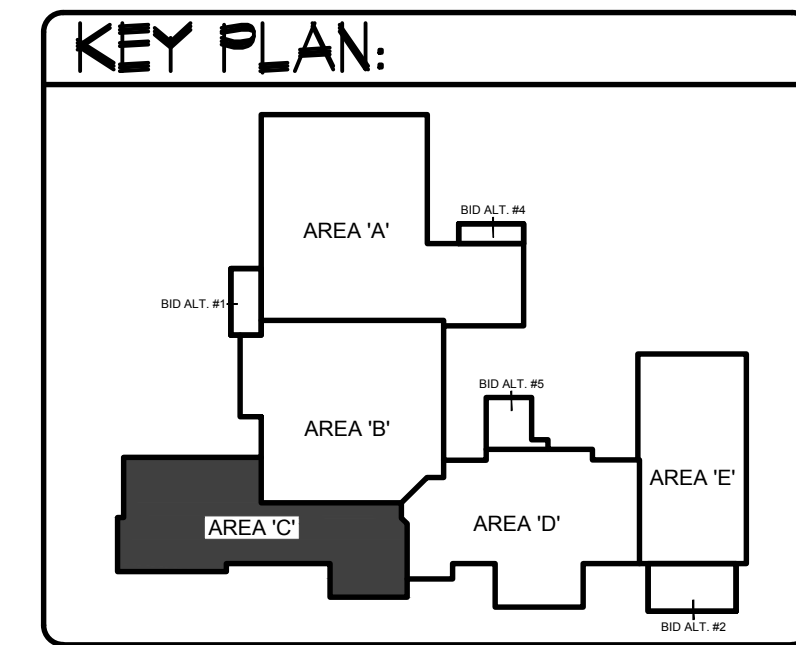
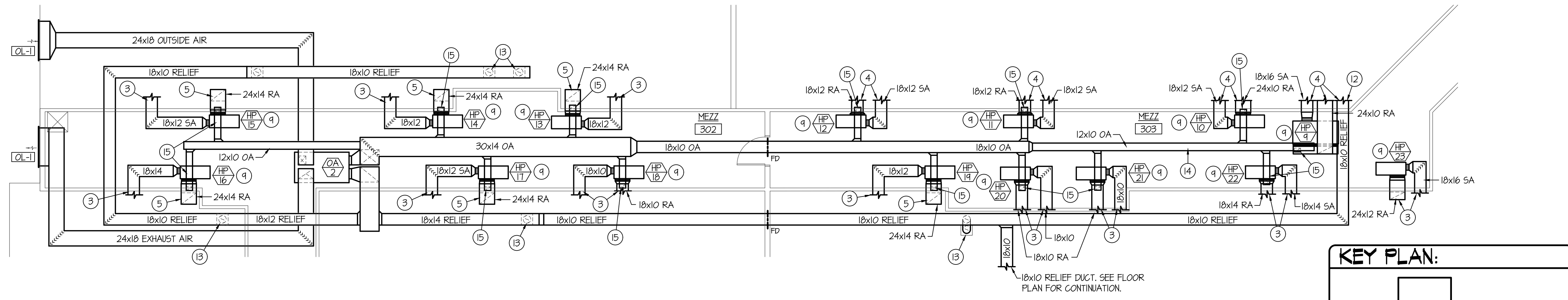
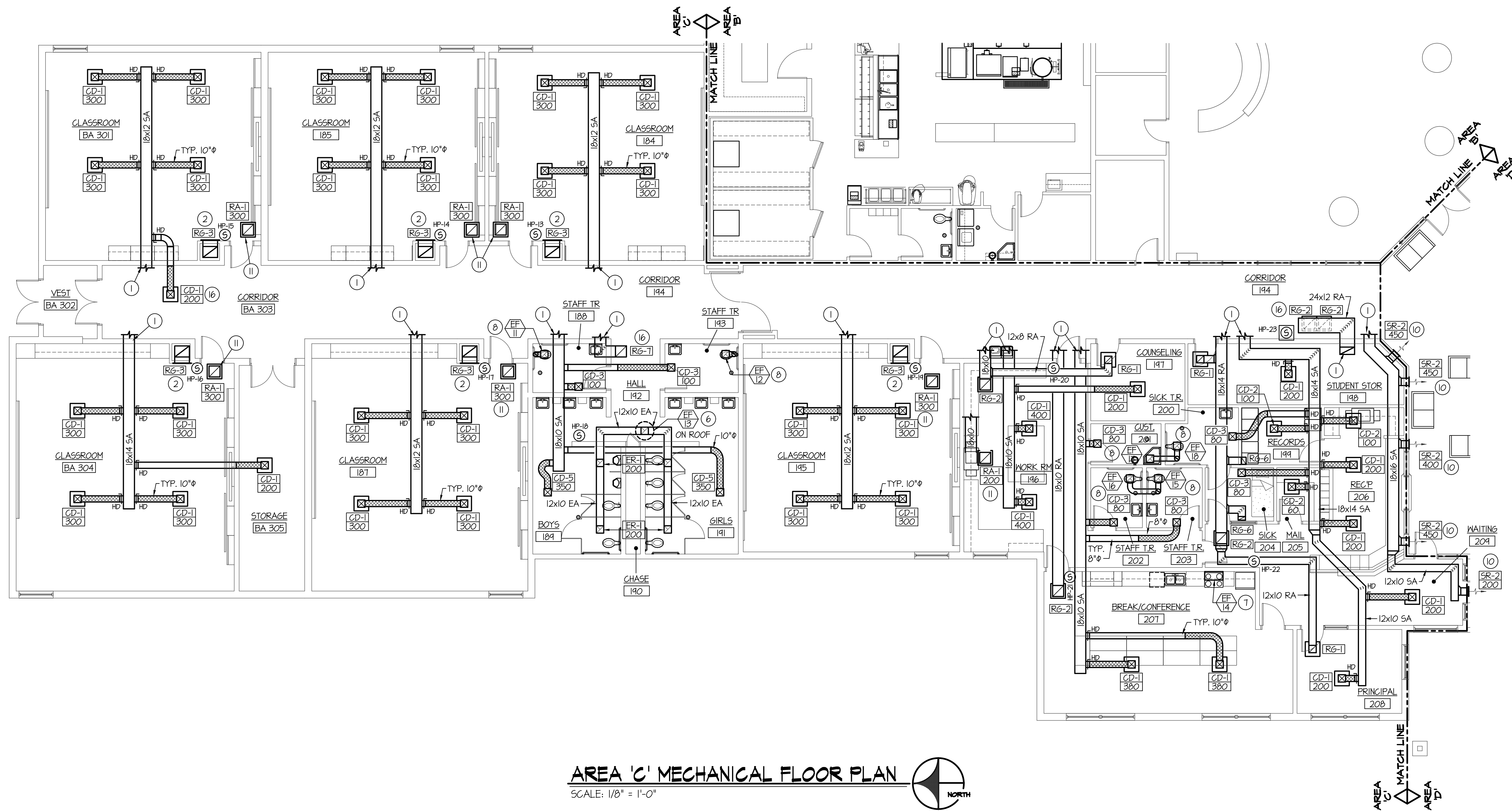
PROJECT: SUGAR - SALEM JUNIOR HIGH SCHOOL  
 SUGAR CITY, IDAHO

DRAWING TITLE: MECHANICAL FLOOR PLAN - AREA 'C'

REVISION:	DATE	COMMENT

DRAWN BY: M. JENSEN  
 JOB NO: 764  
 CHECKED BY: D. SUDNEEKS  
 DATE: APR '20  
 PLOT DATE: Apr 06, 2020

DRAWING NO. M1.3  
 FILE: 19099-M1.3.dwg  
 OF 17



F:\19099\04 Sugar Salem Jr. High\19099-M1.3.dwg Apr 06, 2020 - 2:11pm