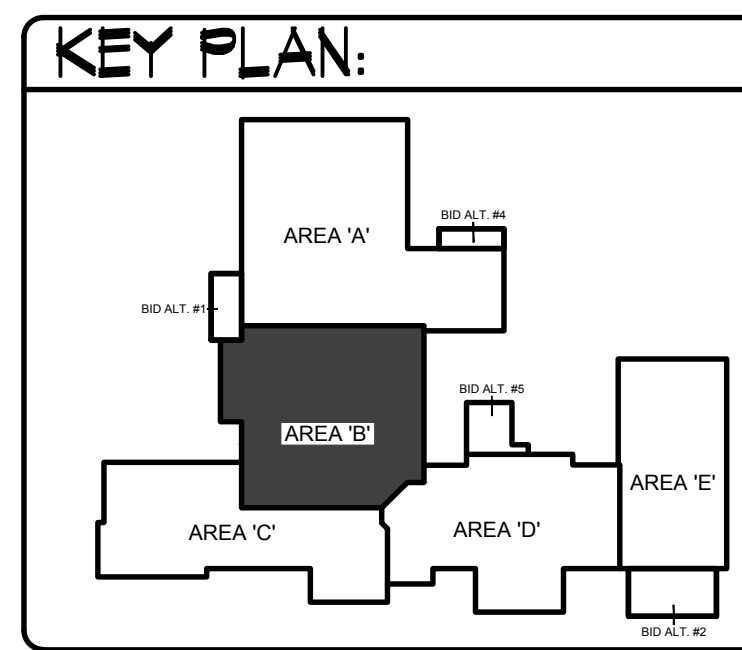


AREA 'B' MECHANICAL FLOOR PLAN
SCALE: 1/8" = 1'-0"



PLAN NOTES:

- 1 ROUND DUCT TO BE FABRIC DUCT SIMILAR TO DUCTOXX WITH INTERNAL HOOP SUPPORT SYSTEM SPACED AT 5'-0" ON CENTERS. TYPICAL OF ALL ROUND DUCT IN THIS ROOM. FABRIC DUCT TO BE RUN THRU ROOF JOIST SPACE. COORDINATE WITH BUILDING STRUCTURE AND LIGHT FIXTURES.
- 2 PLACE LINEAR AIR VENTS IN THIS SECTION OF DUCT TO ACHIEVE 3000 TOTAL CFM FLOW IN EACH LEG WITH A MAXIMUM VELOCITY OF 300 FPM THRU ANY SINGLE VENT.
- 3 INSTALL RETURN AIR GRILLE 6" ABOVE MEZZANINE MECHANICAL ROOM FLOOR. REFER TO SHEET M2.1 FOR CONTINUATION OF DUCT.
- 4 RISE 18x10 SUPPLY AIR DUCT AND 24x10 RETURN AIR DUCT UP THRU FLOOR ABOVE AND CONNECT TO CORRESPONDING HEAT PUMP. REFER TO LARGE SCALE PLAN ON SHEET M2.1 FOR CONTINUATION OF DUCTWORK.
- 5 REFER TO LARGE SCALE MEZZANINE MECHANICAL ROOM ON SHEET M2.1 FOR CONTINUATION OF DUCTWORK.
- 6 MOUNT SENSOR ON WALL WITH LOCKING METAL COVER.
- 7 PROVIDE AND INSTALL MINI-SPLIT SYSTEM FAN COIL UNIT WITH REMOTE CONDENSING UNIT AS SPECIFIED. MOUNT INDOOR UNIT ON WALL AS HIGH AS POSSIBLE. RISE REFRIGERANT AND CONDENSATE DRAIN LINES UP IN WALL AND EXTEND THRU ROOF. CONDENSATE PUMP TO BE SUPPLIED WITH UNIT. MOUNT OUTDOOR UNIT ON ROOF WITH PYRAMID TYPE SUPPORTS. REFER TO DETAIL OMB.1 FOR TYPICAL PIPING CONNECTIONS AND SUPPORT.
- 8 RISE 3/8" L, 5/8" S, AND 3/4" CD PIPING UP THRU ROOF IN 6" PIPE WITH GOOSENECK. CONNECT REFRIGERANT PIPING TO ROOF MOUNTED CONDENSING UNIT. TERMINATE CONDENSATE DRAIN LINE AT ROOF LEVEL. A MINIMUM OF 18" AWAY FROM ROOF PENETRATION. REFER TO NMB.1 FOR TYPICAL GOOSENECK PIPE THRU ROOF.
- 9 REFER TO MEZZANINE WALKWAY LOCATED ON SHEET M1.3 FOR CONTINUATION OF DUCTWORK.
- 10 PROVIDE AND INSTALL CEILING MOUNTED EXHAUST FAN AS SPECIFIED. RISE 6" DUCT UP THRU MECHANICAL ROOM ABOVE. EXTEND THRU ROOF WITH WEATHER CAP. REFER TO DETAIL HMB.1 FOR TYPICAL INSTALLATION. SEE LARGE SCALE PLAN ON SHEET M2.1 FOR CONTINUATION.
- 11 PROVIDE AND INSTALL ROOF MOUNTED EXHAUST FAN AS SPECIFIED. MOUNT ON ROOF CURB WITH BACK-DRAFT DAMPER LOCATED AT ROOF LEVEL. REFER TO DETAIL GMB.1 FOR TYPICAL INSTALLATION. RISE 14x14 EXHAUST DUCT UP THRU MEZZANINE MECHANICAL ROOM TO ROOF MOUNTED FAN. SEE SHEET M2.1 FOR CONTINUATION.
- 12 PROVIDE AND INSTALL DRYER VENT BOX AT FLOOR. RISE 4" DRY VENT UP IN WALL AND EXTEND THRU ROOF WITH ROOF CAP. PROVIDE FLEXIBLE HOSE TO CONNECT TO DRYER. REFER TO DETAIL GMB.3 FOR TYPICAL INSTALLATION AND CONNECTION.
- 13 PROVIDE KITCHEN HOOD AS SPECIFIED. RISE EXHAUST DUCT AND MAKE-UP AIR DUCT UP THRU ROOF AND CONNECT TO CORRESPONDING EQUIPMENT. REFER TO DETAILS GMB.2, FMB.2 AND OMB.2 FOR TYPICAL INSTALLATION AND CONNECTIONS.
- 14 DISHWASHER BY KITCHEN EQUIPMENT CONTRACTOR. ROUGH IN AND CONNECT 16x4 EXHAUST DUCT TO EACH END OF EQUIPMENT. PROVIDE BALANCING DAMPER IN EACH DUCT. REFER TO DETAIL NMB.2 FOR TYPICAL INSTALLATION.
- 15 MOUNT ELECTRIC UNIT HEATER TO WALL ABOVE DOORWAY WITH WALL BRACKET. REFER TO DETAIL DMB.1 FOR TYPICAL INSTALLATION AND MOUNTING. MOUNT THERMOSTAT ON UNIT.
- 16 RISE 18x10 RELIEF AIR DUCT UP AS HIGH AS POSSIBLE TO CROSS MEZZANINE WALKWAY. SEE SHEET M1.3 FOR CONTINUATION.
- 17 PROVIDE AND INSTALL RELIEF AIR PENTHOUSE ON ROOF WITH ROOF CURB. REFER TO DETAIL BMB.3 FOR MOUNTING. DROP 36x48 DUCT DOWN TO 12" BELOW ROOF DECK AND ATTACH TO RETURN AIR GRILLE. PROVIDE MOTORIZED DAMPER IN BOTTOM OF DUCT AND INTERLOCK WITH CORRESPONDING HEAT PUMP FOR ECONOMIZER CYCLE.
- 18 ALL GRILLES IN CORRIDOR CEILINGS TO HAVE FIRE DAMPER AT GRILLE. CONNECT TO FIRE ALARM SYSTEM.

BID SET

BRENT A. MCFARLAND AR-2561

STATE OF IDAHO

TRVA ASSOCIATES

1152 BOND AVENUE - Suite A REBERG, IDAHO 83440
WWW.TRVA.COM VOICE (208) 359-2309 FAX (208) 359-2271

CONSULTANTS:

LANDSCAPE ARCHITECT
REYER & ASSOCIATES
1605 South Woodruff
Idaho Falls, Idaho 83404
(208) 528-9504

CIVIL ENGINEERING
CONNECT ENGINEERING
1150 Highway 10
Idaho Falls, Idaho 83405
(208) 981-8590

STRUCTURAL ENGINEERING
PROST STRUCTURAL ENGINEERING
1020 Lincoln Road
Idaho Falls, Idaho 83401
(208) 227-8484
Fax (208) 227-8405

MECHANICAL ENGINEERING
ENGINEERED SYSTEMS ASSOC.
1355 East Center Street
Pocatello, Idaho 83204
(208) 233-0501
Fax (208) 233-0529

ELECTRICAL ENGINEERING
PANE ENGINEERING INC.
1833 East Center St.
Pocatello, Idaho 83201
(208) 232-4430
Fax (208) 232-1435

SUGAR - SALEM JUNIOR HIGH SCHOOL

PROJECT: SUGAR CITY, IDAHO

DRAWING TITLE: MECHANICAL FLOOR PLAN - AREA 'B'

REVISION:		
#	DATE	COMMENT

DRAWN BY: M JENSEN	JOB NO: 764
CHECKED BY: D SUDNEEKS	DATE: APR '20
PLOT DATE: Apr 06, 2020	
DRAWING NO. FILE: 19099-MI.2.dwg	
MI.2	
OF	17

ORIGINAL DRAWING SIGNED BY: DWAYNE C. SUDNEEKS
DATE ORIGINAL SIGNED: Mar 05, 2020
ORIGINAL ON FILE AT ENGINEERED SYSTEMS ASSOCIATES
1955 EAST CENTER, POCATELLO, IDAHO 83201

Professional Engineer
REGISTERED
5762
STATE OF IDAHO
DWAYNE C. SUDNEEKS

Engineered Systems Associates
1355 EAST CENTER
POCATELLO, IDAHO 83201
PHONE: (208) 233-0501
FAX: (208) 233-0529
EMAIL: esa@engsystems.com
ESA JOB NUMBER: 19099