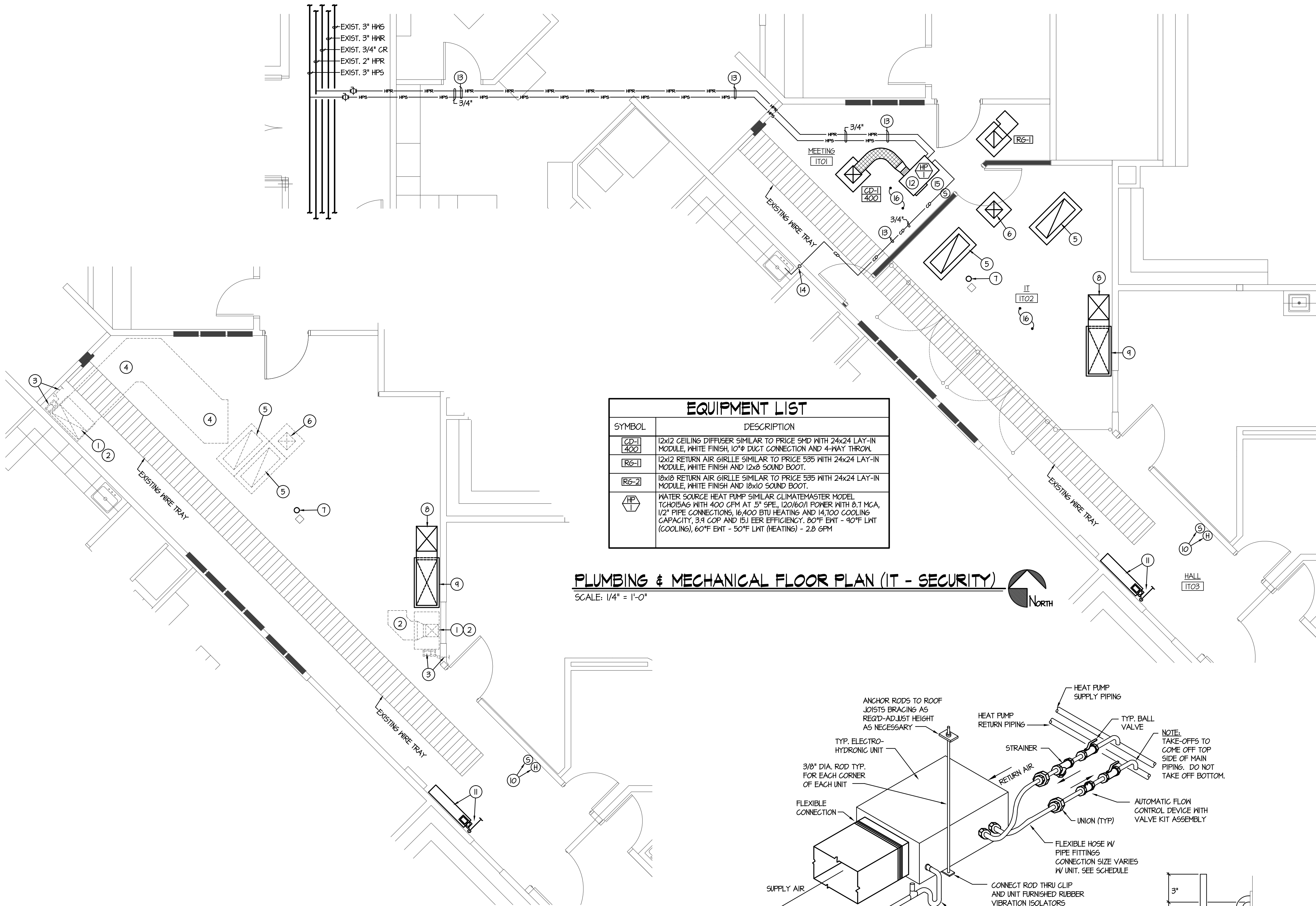


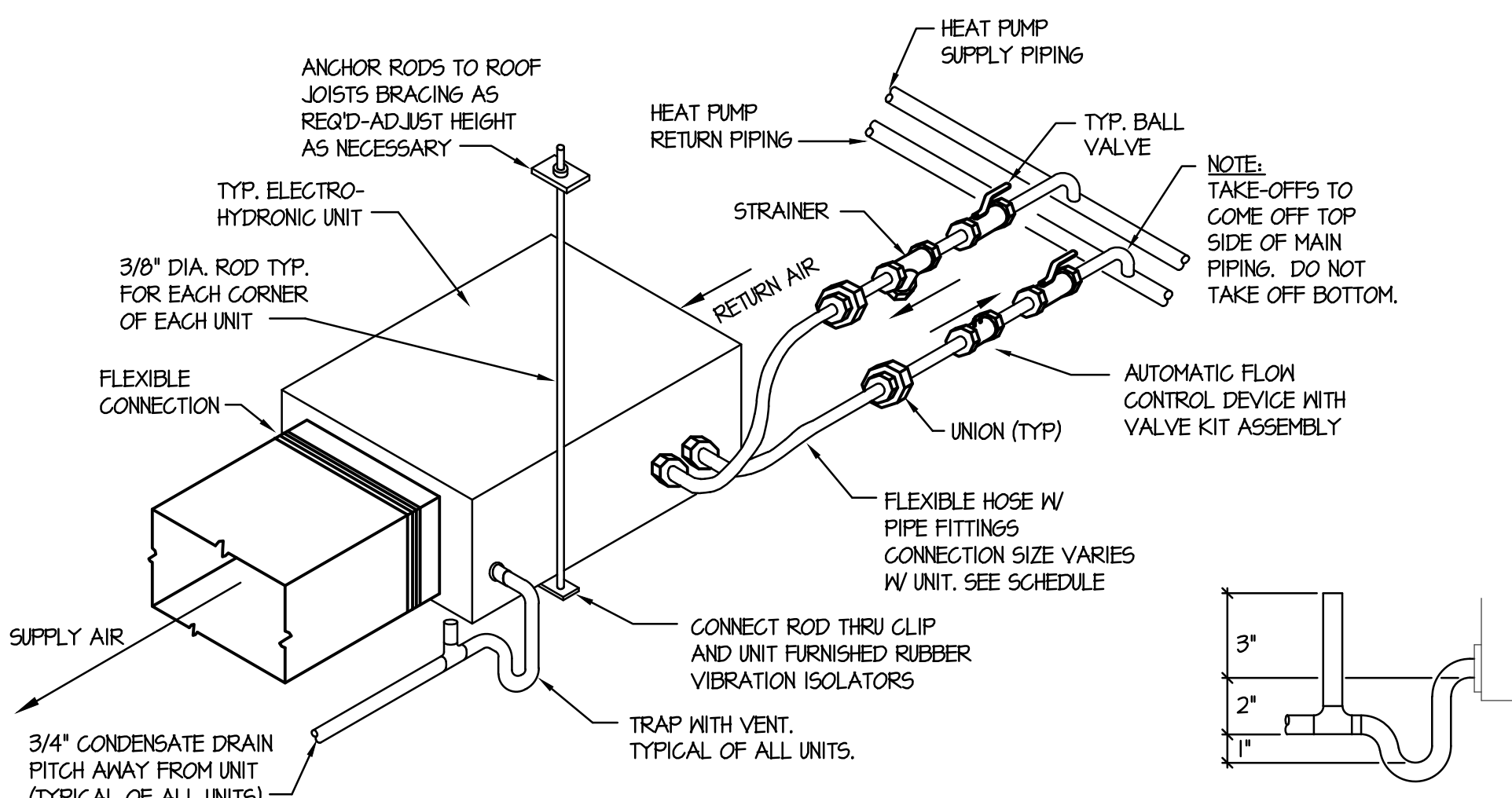
F:\V\1061 Madison Hospital IT Room\1061-MH-1.dwg Oct 17, 2014 - 11:25am



PLUMBING & MECHANICAL DEMOLITION PLAN (IT - SECURITY)
SCALE: 1/4" = 1'-0"

EQUIPMENT LIST	
SYMBOL	DESCRIPTION
[CD-1] 400	12x12 CEILING DIFFUSER SIMILAR TO PRICE SMD WITH 24x24 LAY-IN MODULE, WHITE FINISH, 10" Ø DUCT CONNECTION AND 4-WAY THROW.
[RG-1]	12x12 RETURN AIR GRILLE SIMILAR TO PRICE 535 WITH 24x24 LAY-IN MODULE, WHITE FINISH AND 12x8 SOUND BOOT.
[RG-2]	18x18 RETURN AIR GRILLE SIMILAR TO PRICE 535 WITH 24x24 LAY-IN MODULE, WHITE FINISH AND 18x10 SOUND BOOT.
[HP]	WATER SOURCE HEAT PUMP SIMILAR CLIMATEMASTER MODEL TCH015AG WITH 400 CFM AT 5" GPM, 120/60/1 POWER WITH 8.1 MCA, 1/2" PIPE CONNECTIONS, 16,400 BTU HEATING AND 14,700 COOLING CAPACITY, 3.9 COP AND 15.1 EER EFFICIENCY. 80°F EMT - 90°F LMT (COOLING), 60°F EMT - 50°F LMT (HEATING) - 2.8 GPM

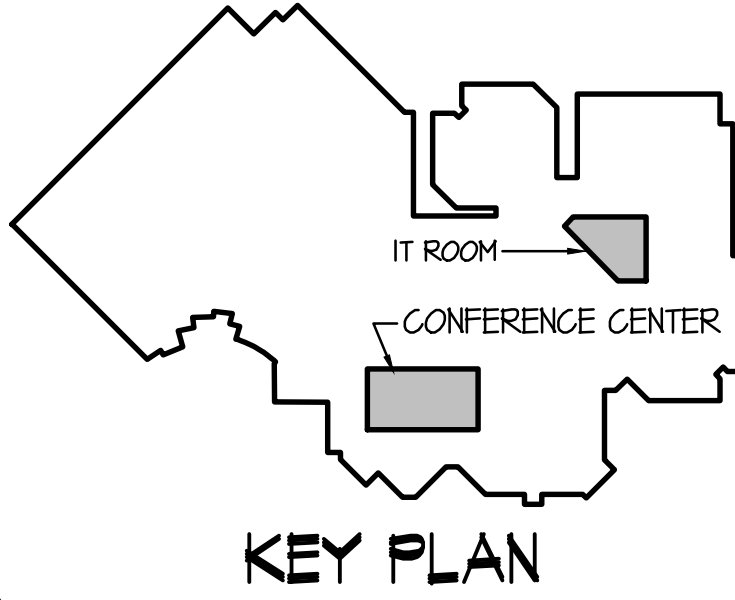
PLUMBING & MECHANICAL FLOOR PLAN (IT - SECURITY)
SCALE: 1/4" = 1'-0"



HEAT PUMP PIPING AND SUPPORT DETAIL
NO SCALE

PLAN NOTES:

- DISCONNECT AND REMOVE EXISTING VERTICAL COOLING UNIT AND ALL ASSOCIATED DUCTWORK. CONTRACTOR TO FIELD VERIFY EXISTING CONDITIONS AND LOCATION OF EXISTING UNIT. CUT EXISTING UNIT UP AS REQUIRED TO REMOVE FROM ROOM.
- DISCONNECT EXISTING REFRIGERANT PIPING FROM EXISTING COOLING UNIT. REMOVE REFRIGERANT LINES COMPLETELY TO REMOTE CONDENSING UNIT. CONTRACTOR TO FIELD VERIFY EXACT SIZES AND LOCATIONS OF EXISTING REFRIGERANT PIPING. COLLECT AND DISPOSE OF EXISTING R22 REFRIGERANT AS REQUIRED BY CODE.
- DISCONNECT AND REMOVE EXISTING CONDENSATE PUMP AND ASSOCIATED PIPING. CAP CONDENSATE PIPING ABOVE CEILING. DELIVER PUMP AND RESERVOIR TO OWNER.
- EXISTING SUPPLY AIR DUCT BELOW CEILING TO BE REMOVED. FIELD VERIFY EXISTING SIZES AND LOCATIONS. REMOVE HANGERS ALSO.
- EXISTING CEILING RETURN GRILLE TO BE RELOCATED TO ACCOMMODATE NEW WALL CONSTRUCTION. CONTRACTOR TO FIELD VERIFY NEW LOCATION WITH EXISTING DUCTWORK ABOVE CEILING, EXISTING WIRE TRAY, AND EXISTING LIGHT FIXTURES, AND EXISTING IT EQUIPMENT.
- EXISTING CEILING DIFFUSER TO BE RELOCATED TO ACCOMMODATE NEW WALL CONSTRUCTION. CONTRACTOR TO FIELD VERIFY NEW LOCATION WITH EXISTING DUCTWORK ABOVE CEILING, EXISTING WIRE TRAY, AND EXISTING LIGHT FIXTURES, AND EXISTING IT EQUIPMENT.
- EXISTING 4" WASTE LINE TO REMAIN. PROTECT DURING CONSTRUCTION.
- EXISTING DUCTWORK UP THRU CEILING AND ROOF TO REMAIN. PROTECT DUCTWORK DURING CONSTRUCTION.
- EXISTING SUPPLY AIR PLENUM FROM ROOF TOP UNIT TO REMAIN. PROTECT DUCTWORK AND GRILLES DURING CONSTRUCTION.
- EXISTING WALL MOUNTED THERMOSTAT AND HUMIDIFIER TO REMAIN. FIELD VERIFY EXACT LOCATION AND PROTECT DURING CONSTRUCTION.
- EXISTING HUMIDIFIERS AND ALL ASSOCIATED PIPING TO REMAIN. PROTECT EQUIPMENT AND PIPING DURING CONSTRUCTION.
- PROVIDE AND INSTALL NEW WATER SOURCE HEAT PUMP AS SPECIFIED. MOUNT UNIT ABOVE CEILING AND SUPPORT FROM FLOOR STRUCTURE ABOVE. COORDINATE ACTUAL LOCATION OF UNIT WITH EXISTING PIPING, DUCTWORK, AND BUILDING STRUCTURE. UNIT TO BE COMPLETE WITH OVERFLOW SENSOR.
- RUN 3/4" HPS & HPR LINES THRU CEILING SPACE AS SHOWN AND CONNECT TO EXISTING 2" MAIN LINES ABOVE CORRIDOR CEILING. CONTRACTOR TO FIELD VERIFY EXACT SIZE AND LOCATION OF EXISTING HEAT PUMP PIPING. PROVIDE SHUT-OFF VALVES IN EACH LINE AT TAP. CONNECT NEW HEAT PUMP LINES TO UNIT WITH SHUT-OFF VALVE, 2-WAY CONTROL VALVE AND FLEXIBLE HOSE KITS. REFER TO DETAIL ON THIS SHEET FOR TYPICAL INSTALLATION OF UNIT AND PIPING.
- RUN 3/4" CONDENSATE DRAIN LINE ABOVE CEILING TO NEAREST PLUMBING FIXTURE AS SHOWN. DROP NEW PIPING DOWN IN EXISTING WALL AND EXTEND OUT BELOW FUTURE COUNTERTOP. CONNECT TO EXISTING FIXTURE WITH 'DISHWASHER' TYPE CONNECTION. CONTRACTOR TO FIELD VERIFY EXACT LOCATION OF EXISTING FIXTURE, CUT AND PATCH EXISTING WALL AS REQUIRED TO INSTALL PIPING INSIDE STUD SPACE.
- INSTALL NEW ROOM SENSOR FOR NEW HEAT PUMP AND INTEGRATE INTO EXISTING BUILDING BMS SYSTEM.
- PROVIDE NEW HEADS AND/OR PIPING, OR RELOCATE EXISTING FIRE SPRINKLER HEAD AND/OR PIPING AS REQUIRED TO MEET NFPA-13 CODE REQUIREMENTS DUE TO REMODEL WORK.



ORIGINAL DRAWING SIGNED BY: DHAYNE C. SUDNEEKS
DATE ORIGINAL SIGNED: Oct 17, 2014
ORIGINAL ON FILE AT ENGINEERED SYSTEMS ASSOCIATES
1355 EAST CENTER, POCATELLO, IDAHO 83201

PROFESSIONAL ENGINEER
REGISTERED
5762
STATE OF IDAHO
DHAYNE C. SUDNEEKS

Engineered Systems Associates

1355 EAST CENTER
POCATELLO, IDAHO 83201
PHONE: (208) 233-0501
FAX: (208) 233-0529
EMAIL: esa@engsystems.com
ESA JOB NUMBER: 19061

STATE OF IDAHO

BRENT A. MCFARLAND AR-2561

1152 BOND AVENUE - SUITE A REIDBURG, IDAHO 83440
WWW.JRWV.ASSOCIATES.COM VOICE (208) 359-2069 FAX (208) 359-2271

CONSULTANTS:

MECHANICAL ENGINEERING
ENGINEERED SYSTEMS ASSOC.
1355 East Center
Pocatello, Idaho 83201
(208) 233-0501
Fax (801) 233-0529

ELECTRICAL ENGINEERING
PAYNE ENGINEERING INC.
1823 E. Center St.
Pocatello, Idaho 83201
(208) 232-4439
Fax (208) 232-1435

PROJECT: MADISON MEMORIAL HOSPITAL
IT - SECURITY

REVIEWER: IDAHO

DRAWING TITLE: PLB6 & MECH FLOOR PLAN

REVISION:

#	DATE	COMMENT

DRAWN BY: M. JENSEN
JOB NO: TT8

CHECKED BY: M. JENSEN
DATE: OCT 2014

PLOT DATE: 4-01-09

DRAWING NO. FILE: 19061-MH.1.dwg
M.I.

OF TWO