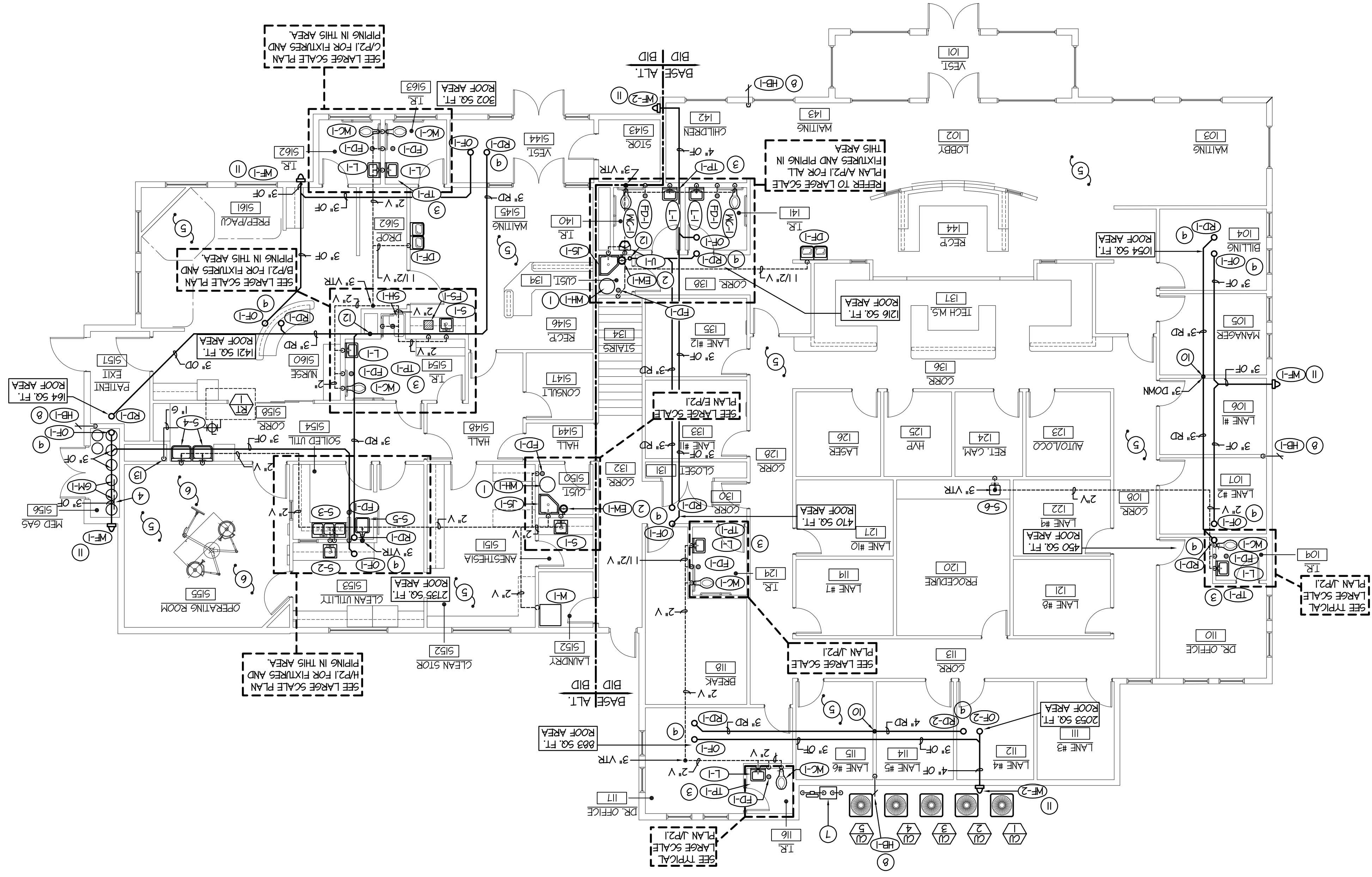


SCALE: 1/8" = 1'-0"  
**MAIN LEVEL PLUMBING PLAN**  
 NORTH



**PLAN NOTES:**

- 1 PROVIDE AND INSTALL WATER HEATER AS SPECIFIED. REFER TO DETAIL MP21 FOR TYPICAL PIPING CONNECTIONS. WATER HEATER TO BE COMPLETE WITH THERMAL EXPANSION TANK, MIXING VALVE, AND HEAT TRAP NIPPLES.
- 2 MOUNT EYE WASH ON WALL. RUN DRAIN LINE TO ADJACENT SERVICE SINK. REFER TO DETAIL 0/21 FOR TYPICAL INSTALLATION.
- 3 PROVIDE AND INSTALL TRAP PRIMER BELOW LAVATORY. RUN 1/2" COLD WATER LINE TO FLOOR DRAIN. REFER TO DETAIL J/21 FOR TYPICAL INSTALLATION.
- 4 PROVIDE AND INSTALL PRESSURE TANK MANIFOLD FOR MED GASES. REFER TO DETAIL D/21 FOR TYPICAL INSTALLATION.
- 5 WATER PIPING TO BE RUN IN CRAWL SPACE. REFER TO SHEET P10.
- 6 OPERATING ROOM ONLY TO BE FIRE SPRINKLED UNDER ALTERNATE BID. REFER TO FIRE RISER AND ALARM VALVE DETAIL ON SHEET P32.
- 7 GAS METER BY LOCAL GAS COMPANY. SIZE METER FOR 650,000 BTU WITH 0.5 PSI DELIVERY PRESSURE.
- 8 RISE 3/4" HCM LINE UP IN WALL AND EXTEND OUT TO SPACE BELOW. PROVIDE SHUT-OFF VALVE IN CRAWL SPACE BELOW. REFER TO SHEET P10 FOR CONTINUATION OF PIPING AND TO DETAIL H/21 FOR TYPICAL INSTALLATION.
- 9 PROVIDE AND INSTALL ROOF DRAIN AND SECONDARY OVERFLOW DRAIN AS SPECIFIED. RUN PIPING THRU CEILING SPACE AS SHOWN WITH 1/2" PER FOOT SLOPE DOWN IN DIRECTION OF FLOW. SEE DETAIL C/21 FOR TYPICAL INSTALLATION.
- 10 RISE 3/4" OR 4" ROOF DRAIN LINE DOWN IN WALL TO CRAWL SPACE. REFER TO SHEET P10 FOR CONTINUATION.
- 11 EXTEND OVERFLOW LINE THRU EXTERIOR WALL WITH WALL FLANGE AS SPECIFIED. KEEP PIPING AS HIGH AS POSSIBLE.
- 12 DROOP 4" ROOF DRAIN DOWN IN CUSTODIAL ROOM AND/OR IN CHASE. REFER TO SHEET P10 FOR CONTINUATION.
- 13 RISE 1" GAS LINE UP FROM CRAWL SPACE. EXTEND THRU ROOF AND SEAL TIGHT. RUN 1" LINE TO ROOF TOP UNIT AS SHOWN. PROVIDE SHUT-OFF VALVE AND CONNECT WITH FLEXIBLE HOSE. REFER TO DETAIL MP21 FOR TYPICAL PIPE CONNECTION. SEE SHEET P10 FOR CONTINUATION OF PIPING IN CRAWL SPACE.

PROJECT:  
**DR. JOSEPH R. FULLMER**  
 MEDICAL OFFICE BUILDING  
 PROPERTIES, LLC  
 IDAHO

DRAWING TITLE:  
**MAIN LEVEL PLUMBING PLAN**

REVISION:	#	DATE	COMMENT

DRAWN BY: M THIEL  
 JOB NO.: 1717  
 CHECKED BY: M JENSEN  
 DATE: AUGUST 2014  
 PLOT DATE: Aug 12, 2014  
 DRAWING NO.: P11  
 OF FIVE

ORIGINAL DRAWING SIGNED BY: JAMES C. SUDWEEKS  
 DATE ORIGINAL SIGNED: MAY 19, 2014  
 ORIGINAL ON FILE: ENGINEERS ASSOCIATES  
 1955 EAST CENTER ROAD, SUITE 200, BOZEMAN, MT 59717

Engineered  
**Systems Associates**  
 1355 EAST CENTER  
 POCATELLO, IDAHO 83201  
 PHONE: (208) 233-0501  
 FAX: (208) 233-0529  
 EMAIL: esd@systems.com  
 ESA JOB NUMBER: 19034

STATE OF IDAHO  
 BRENT A. MCFARLAND AR-2561

CONSULTANTS:

STRUCTURAL ENGINEERING  
 1020 Lincoln Road  
 Pocatello, Idaho 83401  
 Fax (208) 227-8404  
 1355 East Center  
 Pocatello, Idaho 83201  
 Fax (208) 233-0529

MECHANICAL ENGINEERING  
 ENGINEERS SYSTEMS ASSOC.  
 1355 East Center  
 Pocatello, Idaho 83201  
 Fax (208) 233-0501

ELECTRICAL ENGINEERING  
 PANE ENGINEERING INC.  
 1822 E. Center St.  
 Pocatello, Idaho 83201  
 Fax (208) 232-1435

**JRW**  
 ASSOCIATES

1122 BROAD AVENUE - SUITE A READING, IDAHO 83440  
 WWW.JRW.COM VOICE (208) 539-2399 FAX (208) 539-2271

STATE OF IDAHO