

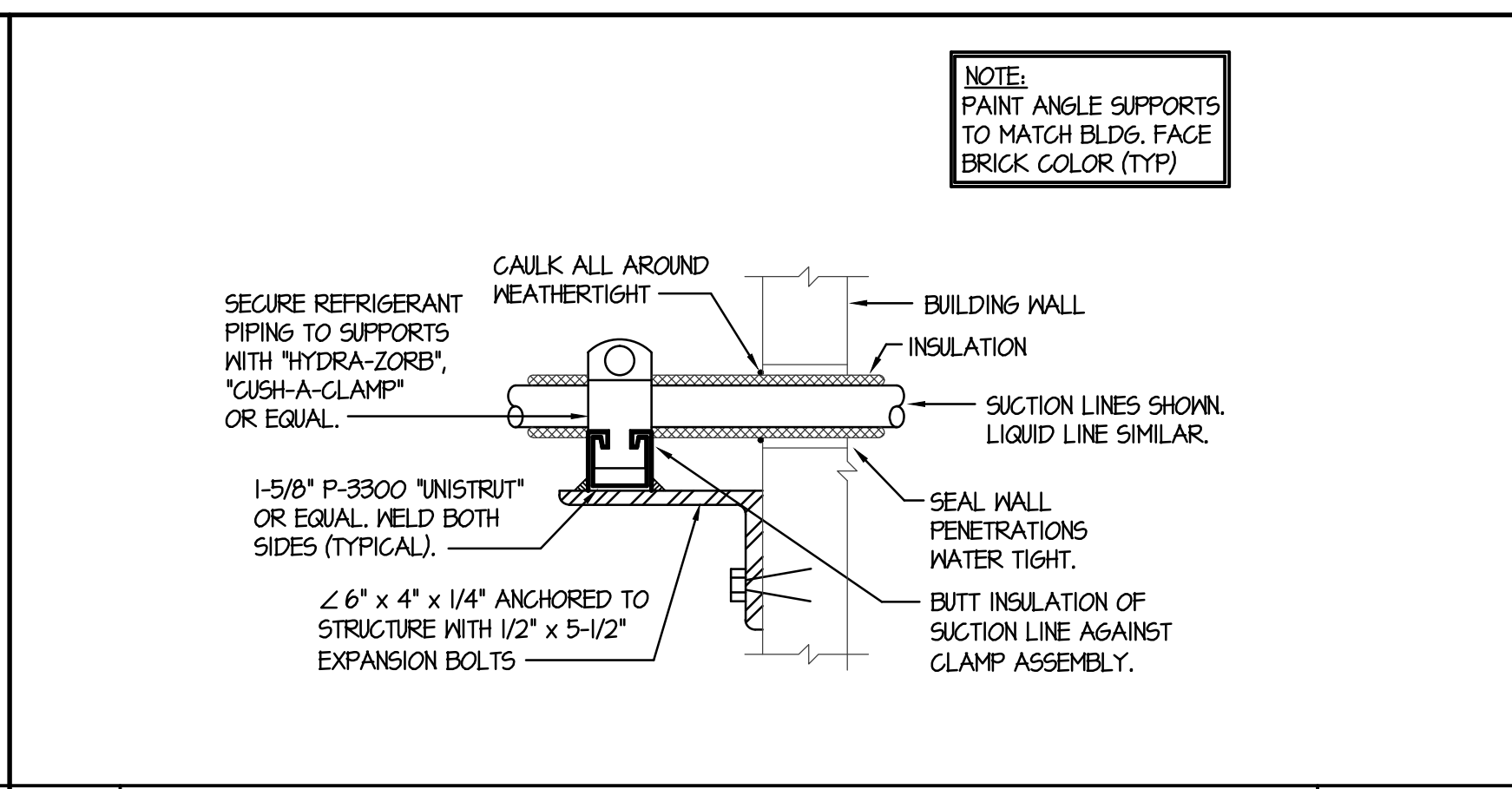
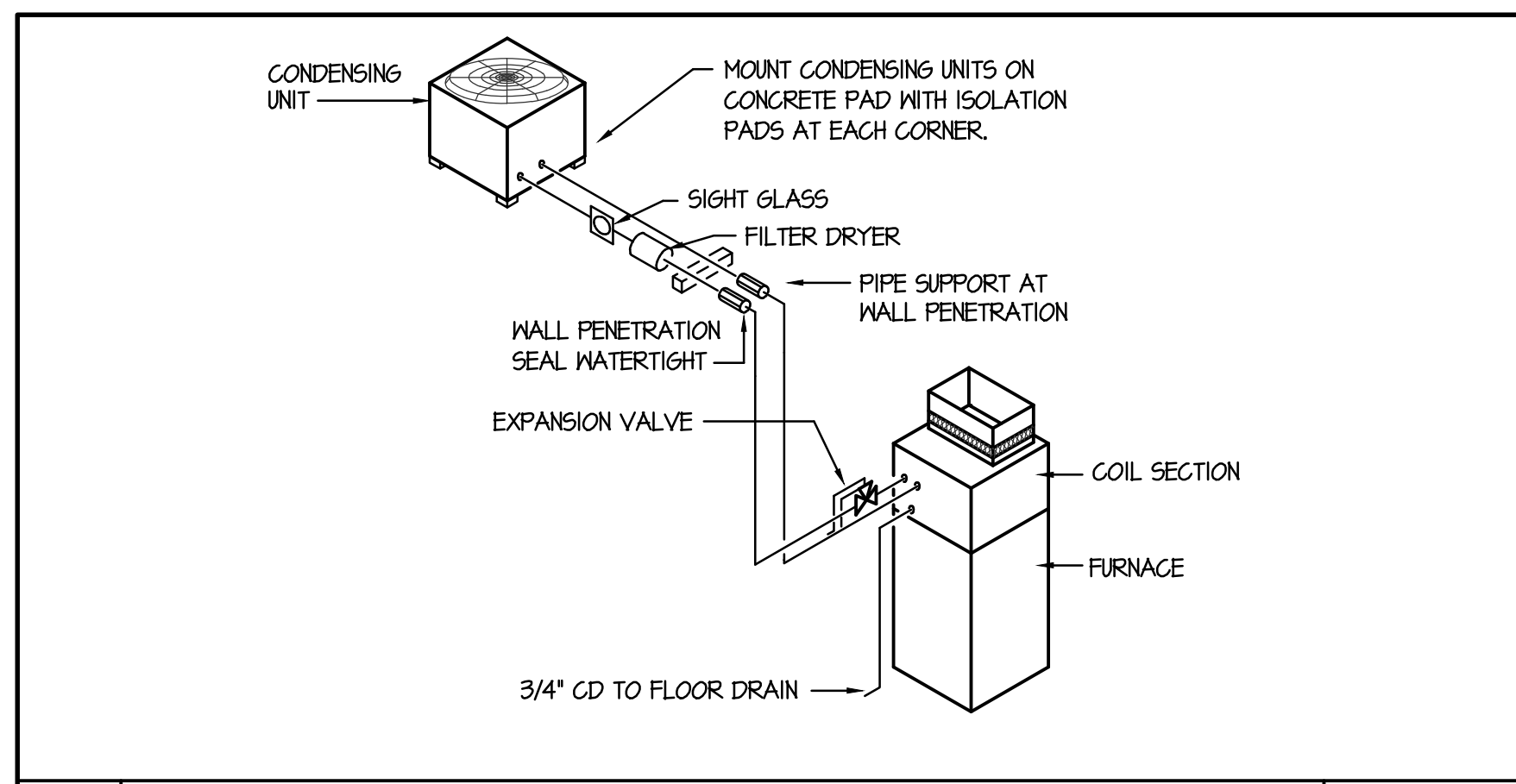
CONDENSING UNIT SCHEDULE								
SYM.	BTU	EAT	CHAR.	MCA	WEIGHT	REFRIGERANT PIPING		REMARKS
						LIQUID	SUCTION	
CU-1	54,000	45°F	208/60/1	34.6	250#	3/8"	1-1/8"	LENNOX 13ACX-060 WITH LOW AMBIENT "HARD-START" KIT
CU-2	54,000	45°F	208/60/1	34.6	250#	3/8"	1-1/8"	LENNOX 13ACX-060 WITH LOW AMBIENT "HARD-START" KIT
CU-3	42,000	45°F	208/60/1	25.3	200#	3/8"	7/8"	LENNOX 13ACX-042 WITH LOW AMBIENT "HARD-START" KIT
CU-4	42,000	45°F	208/60/1	25.3	200#	3/8"	7/8"	LENNOX 13ACX-042 WITH LOW AMBIENT "HARD-START" KIT
CU-5	54,000	45°F	208/60/1	34.6	250#	3/8"	1-1/8"	LENNOX 13ACX-060 WITH LOW AMBIENT "HARD-START" KIT

FURNACE SCHEDULE														
SYM.	TYPE	DESIGN CFM	O.A. CFM	SP E	H.P.	CHAR.	MBH.		EAT	LAT	SUP	VENT	GAS TYPE	REMARKS
							INPUT	OUTPUT						
F-1	UP-FLOW	1800	200	5"	1	120/60/1	110	106	65°F	110°F	1/2"	(2) 3"	NAT.	LENNOX ML145UH-110XP60C WITH MATCHING DX COOLING COIL
F-2	UP-FLOW	1800	180	5"	1	120/60/1	110	106	65°F	110°F	1/2"	(2) 3"	NAT.	LENNOX ML145UH-090XP48C WITH MATCHING DX COOLING COIL
F-3	UP-FLOW	1400	130	5"	1/2	120/60/1	88	85	65°F	110°F	1/2"	(2) 3"	NAT.	LENNOX ML145UH-090XP48C WITH MATCHING DX COOLING COIL
F-4	UP-FLOW	1400	380	5"	1/2	120/60/1	88	85	65°F	110°F	1/2"	(2) 3"	NAT.	LENNOX ML145UH-110XP60C WITH MATCHING DX COOLING COIL
F-5	UP-FLOW	1450	300	5"	1	120/60/1	110	106	65°F	107°F	1/2"	(2) 3"	NAT.	LENNOX ML145UH-110XP60C WITH MATCHING DX COOLING COIL

EXHAUST FAN SCHEDULE								
SYM.	TYPE	CFM	S.P.E.	WATTS	CHAR.	R.P.M.	CONTROL	REMARKS
EF-1	CEILING MOUNTED	100	.25"	87	120/60/1	640	WITH LIGHTS	TWIN CITY T100 WITH 6" DUCT TO ROOF CAP AND BACK-DRAFT DAMPER
EF-2	CEILING MOUNTED	100	.25"	87	120/60/1	640	WITH LIGHTS	TWIN CITY T100 WITH 6" DUCT TO ROOF CAP AND BACK-DRAFT DAMPER
EF-3	CEILING MOUNTED	100	.25"	87	120/60/1	640	WITH LIGHTS	TWIN CITY T100 WITH 6" DUCT TO ROOF CAP AND BACK-DRAFT DAMPER
EF-4	CEILING MOUNTED	100	.25"	87	120/60/1	640	WITH LIGHTS	TWIN CITY T100 WITH 6" DUCT TO ROOF CAP AND BACK-DRAFT DAMPER
EF-5	CEILING MOUNTED	100	.25"	87	120/60/1	640	WITH LIGHTS	TWIN CITY T100 WITH 6" DUCT TO ROOF CAP AND BACK-DRAFT DAMPER
EF-6	CEILING MOUNTED	100	.25"	87	120/60/1	640	WITH LIGHTS	TWIN CITY T100 WITH 6" DUCT TO ROOF CAP AND BACK-DRAFT DAMPER
EF-7	CEILING MOUNTED	100	.25"	87	120/60/1	640	WITH LIGHTS	TWIN CITY T100 WITH 6" DUCT TO ROOF CAP AND BACK-DRAFT DAMPER
EF-8	CEILING MOUNTED	100	.25"	87	120/60/1	640	WITH LIGHTS	TWIN CITY T100 WITH 6" DUCT TO ROOF CAP AND BACK-DRAFT DAMPER
EF-9	CEILING MOUNTED	150	.25"	100	120/60/1	710	WITH LIGHTS	TWIN CITY T150 WITH 6" DUCT TO ROOF CAP AND BACK-DRAFT DAMPER
EF-10	CEILING MOUNTED	100	.25"	87	120/60/1	640	WITH LIGHTS	TWIN CITY T100 WITH 6" DUCT TO ROOF CAP AND BACK-DRAFT DAMPER
EF-11	CEILING MOUNTED	100	.25"	87	120/60/1	640	WITH LIGHTS	TWIN CITY T100 WITH 6" DUCT TO ROOF CAP AND BACK-DRAFT DAMPER
EF-12	CEILING MOUNTED	150	.25"	100	120/60/1	710	WITH LIGHTS	TWIN CITY T150 WITH 6" DUCT TO ROOF CAP AND BACK-DRAFT DAMPER
EF-13	CEILING MOUNTED	200	.25"	127	120/60/1	740	CLG STAT	TWIN CITY T200 WITH 10x4 DUCT UP IN WALL TO ROOF CAP AND BACK-DRAFT DAMPER

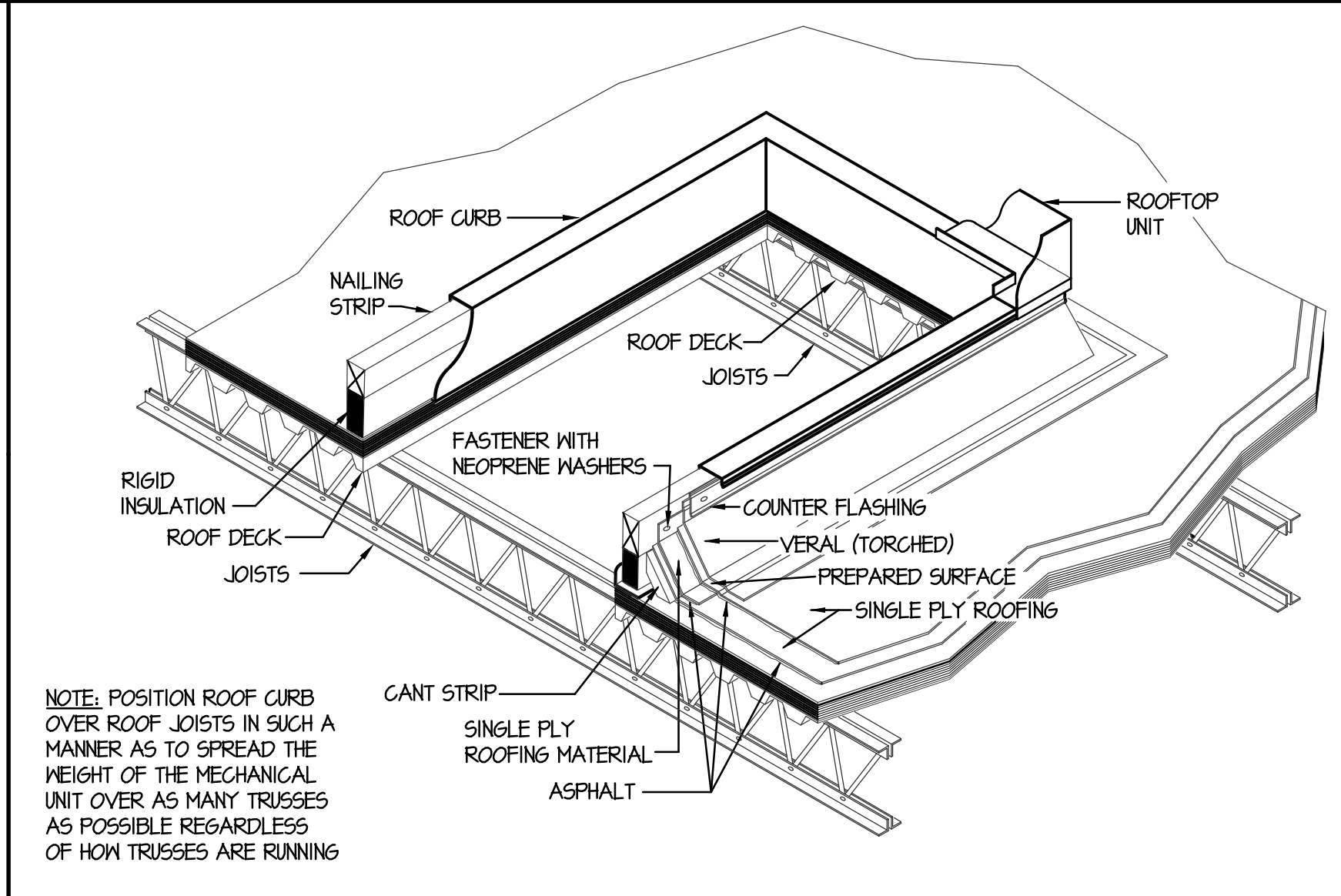
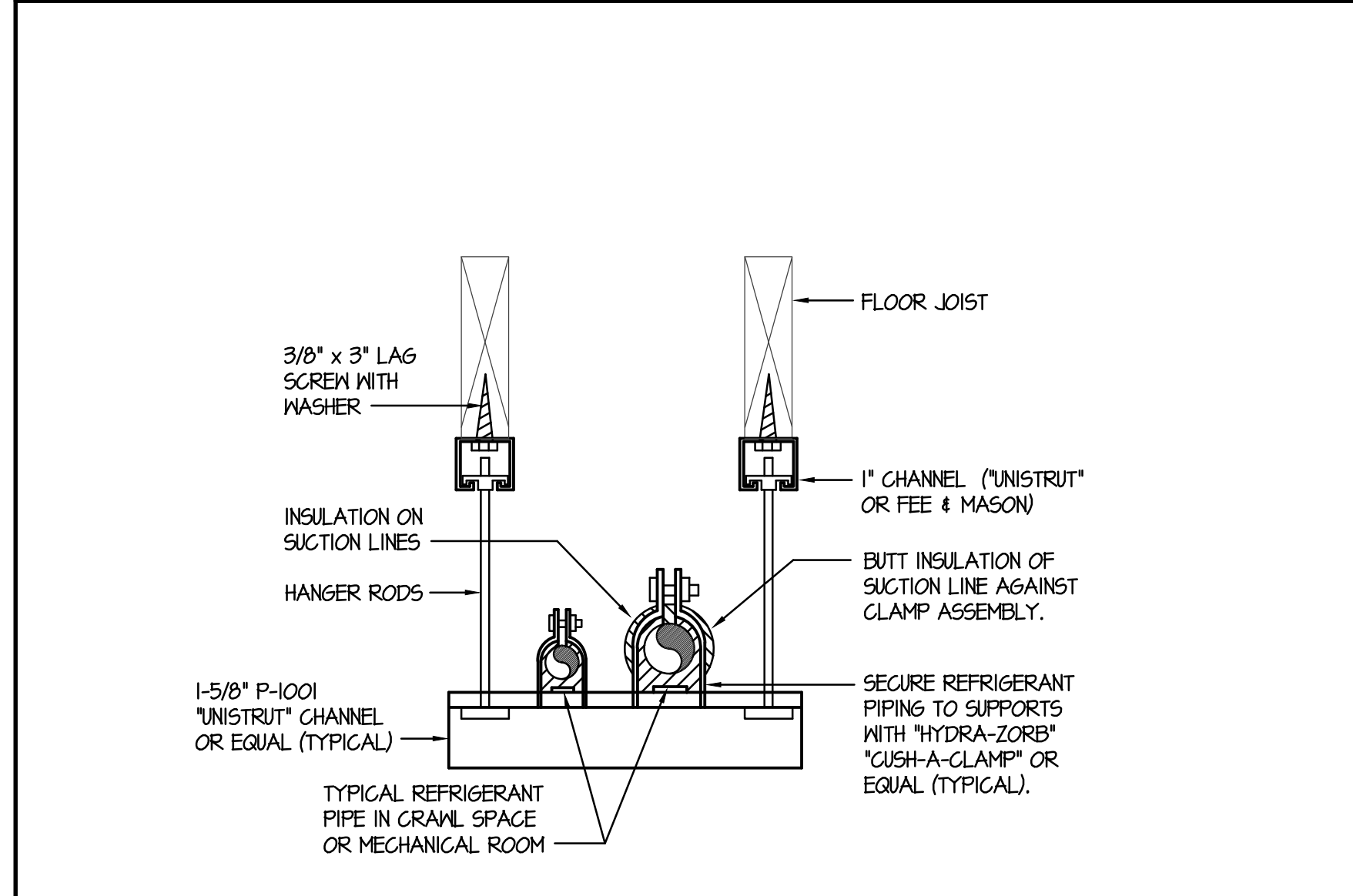
GRILLE AND REGISTER SCHEDULE									
SYM.	SIZE	THROW	CFM	CONSTR.	FINISH	BRANCH DUCT	F.D.	O.B.	REMARKS
GR-1	12x12	4 WAY	200-400	STEEL	WHITE	10"φ	NO	NO	PRICE 5MD WITH 24x24 LAY-IN MODULE
GR-2	9x9	3 WAY	50-200	STEEL	WHITE	8"φ	NO	NO	PRICE 5MD WITH BEVELED FRAME
GR-3	12x6	-	50-150	STEEL	WHITE	8"φ	NO	NO	PRICE LBPH-2TC WITH TYPE 1000 HEAVY-DUTY BORDER
GR-4	12x4	-	50-150	STEEL	WHITE	12x3	NO	NO	PRICE 520L
GR-5	12x2	-	80	STEEL	BROWN	12x2	NO	NO	EVERBILT MODEL E150T5M-02X12
GR-6	12x8	-	300	STEEL	WHITE	12x8	NO	YES	PRICE 520DL
RG-1	12x6	-	50-150	STEEL	WHITE	12x3	NO	NO	PRICE 535L
RG-2	18x10	-	50-400	STEEL	WHITE	18x8	NO	NO	PRICE 535L
RG-3	18x12	-	-	STEEL	WHITE	18x12	NO	NO	PRICE 535L
RG-4	18x30	-	500-1000	STEEL	WHITE	18x10	NO	NO	PRICE 535S
RL-1	18x12	-	-	ALUM.	ANODIZED	18x12	NO	NO	AMERICAN WARMING LE-31 WITH DRAINABLE BLADES AND BIRD SCREEN

ROOF TOP HEATING & AIR CONDITIONING UNIT SCHEDULE															
SYM.	CFM	SP E	BLOWER H.P.	CHAR.	MCA	WEIGHT	GAS CONN.	HEATING		COOLING		REMARKS			
								BTU IN	BTU OUT	EAT	LAT		MEH	EAT	MEB
RT-1	1800	125"	1	208/60/3	28.3	850#	1/2"	130,000	104,000	65°F	110°F	60,000	45°F	63°F	TRANE MODEL YHC-060E3. MOUNT ON ROOF CURB.



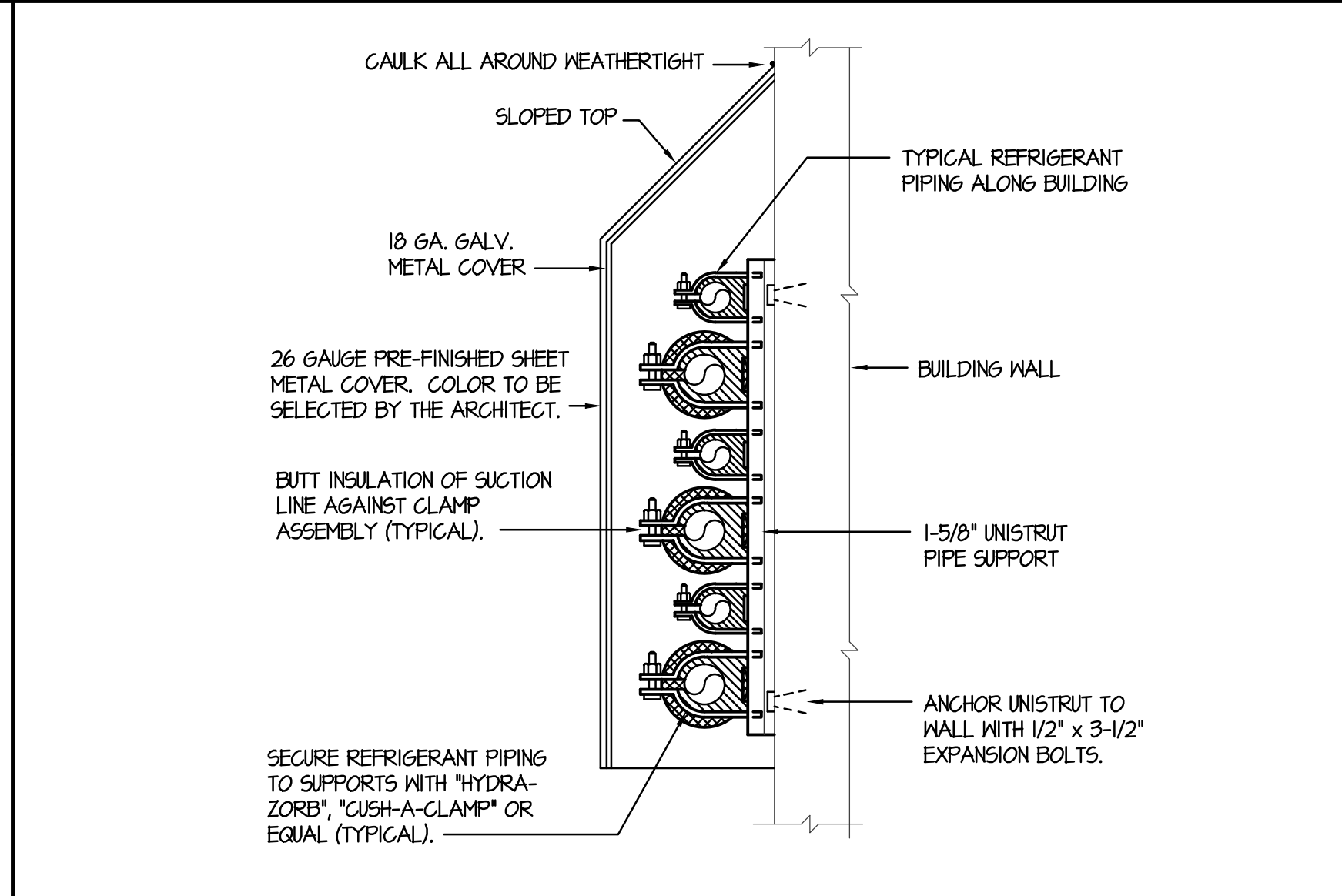
**A REFRIGERANT PIPING DIAGRAM** NO SCALE

**B REFRIG. PIPING SUPPORT AT WALL** NO SCALE



**C SUSPENDED PIPE SUPPORT** NO SCALE

**D TYPICAL ROOFTOP MOUNTING DETAIL** NO SCALE

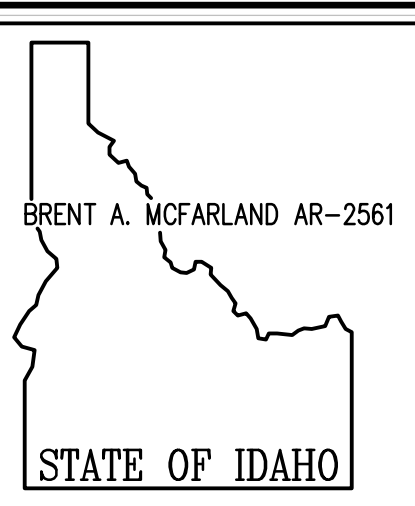


**E PIPE SUPPORT ALONG BUILDING** NO SCALE

ORIGINAL DRAWING SIGNED BY: J. G. SUWNEERS  
 DATE ORIGINAL SIGNED: JAN 11, 2011  
 ORIGINAL ON FILE AT: ENGINEERS SYSTEMS ASSOCIATES  
 1355 EAST CENTER POCA TELLO, IDAHO 83201

**PRELIMINARY DRAWING NOT FOR CONSTRUCTION**

**Engineers Systems Associates**  
 1355 EAST CENTER POCA TELLO, IDAHO 83201  
 PHONE: (208) 233-0501  
 FAX: (208) 233-0529  
 EMAIL: esa@engsystems.com  
 ESA JOB NUMBER: 19034



**JRW & ASSOCIATES**  
 1152 BROAD AVENUE - SUITE A REGBURG, IDAHO 83440  
 WWW.JRW.COM VOICE (208) 359-2099 FAX (208) 359-2271

**CONSULTANTS:**

**STRUCTURAL ENGINEERING**  
 FROST STRUCTURAL ENGINEERING  
 1020 Lincoln Road  
 Idaho Falls, Idaho 83401  
 (208) 227-8404  
 Fax (208) 227-8405

**MECHANICAL ENGINEERING**  
 ENGINEERED SYSTEMS ASSOC.  
 1355 East Center  
 Pocatello, Idaho 83201  
 (208) 233-0501  
 Fax (208) 233-0529

**ELECTRICAL ENGINEERING**  
 PAYNE ENGINEERING INC.  
 1823 E. Center St.  
 Pocatello, Idaho 83201  
 (208) 232-4439  
 Fax (208) 232-1435

**DR. JOSPEH R. FULLMER**  
 MEDICAL OFFICE BUILDING  
 PROPERTIES, LLC

REMBURG, IDAHO

DRAWING TITLE:  
**MECHANICAL SCHEDULES AND DETAILS**

REVISION:	
#	DATE COMMENT

DRAWN BY: M. THIEL JOB NO: TBT  
 CHECKED BY: M. JENSEN DATE: AUGUST 2014  
 PLOT DATE: Aug 14, 2014

DRAWING NO. FILE: 19034-M3.2.dwg  
**M3.2**  
 OF FIVE

F:\19034\Fullmer\_Esp\_Civil\19034-M3.2.dwg Aug 14, 2014 - 10:35am