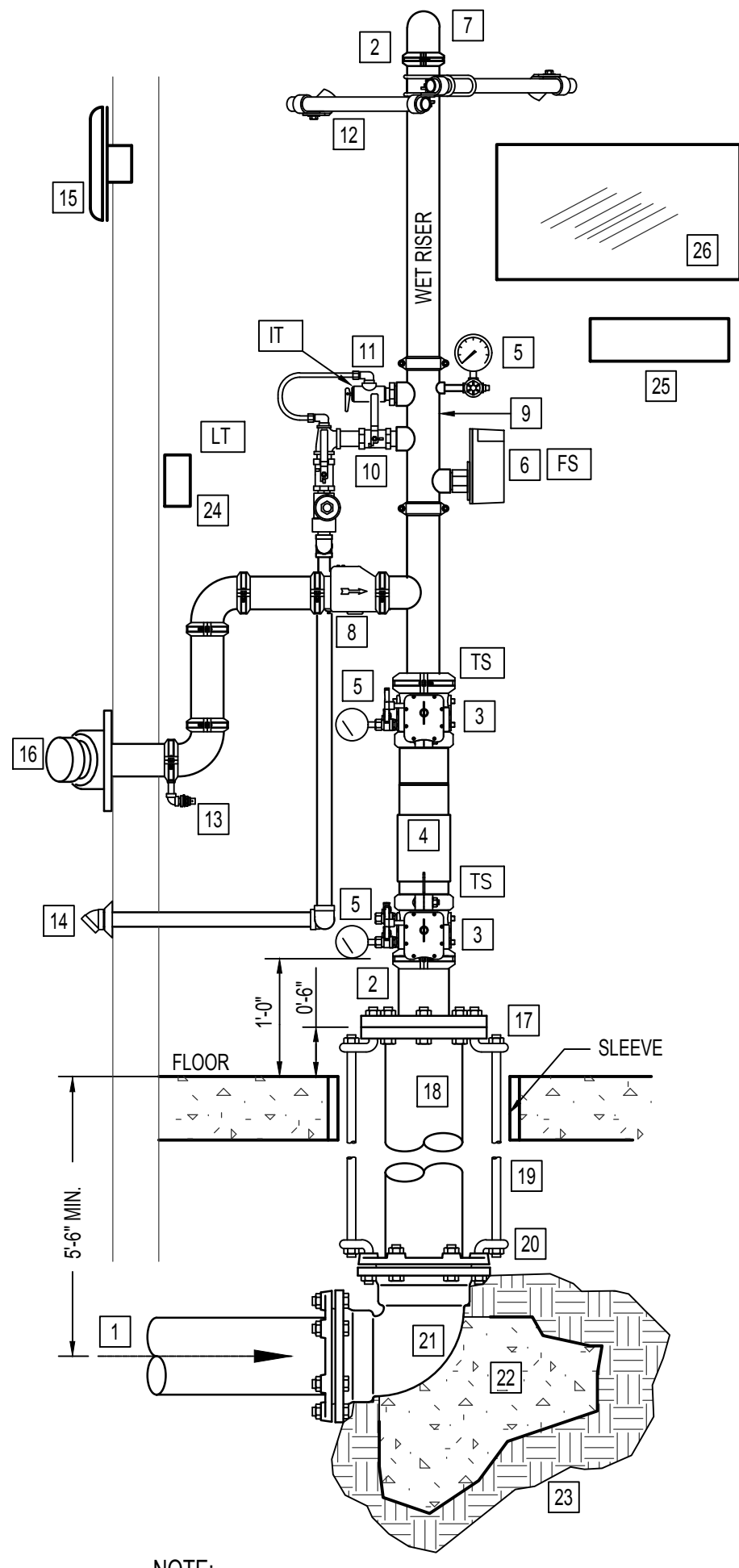


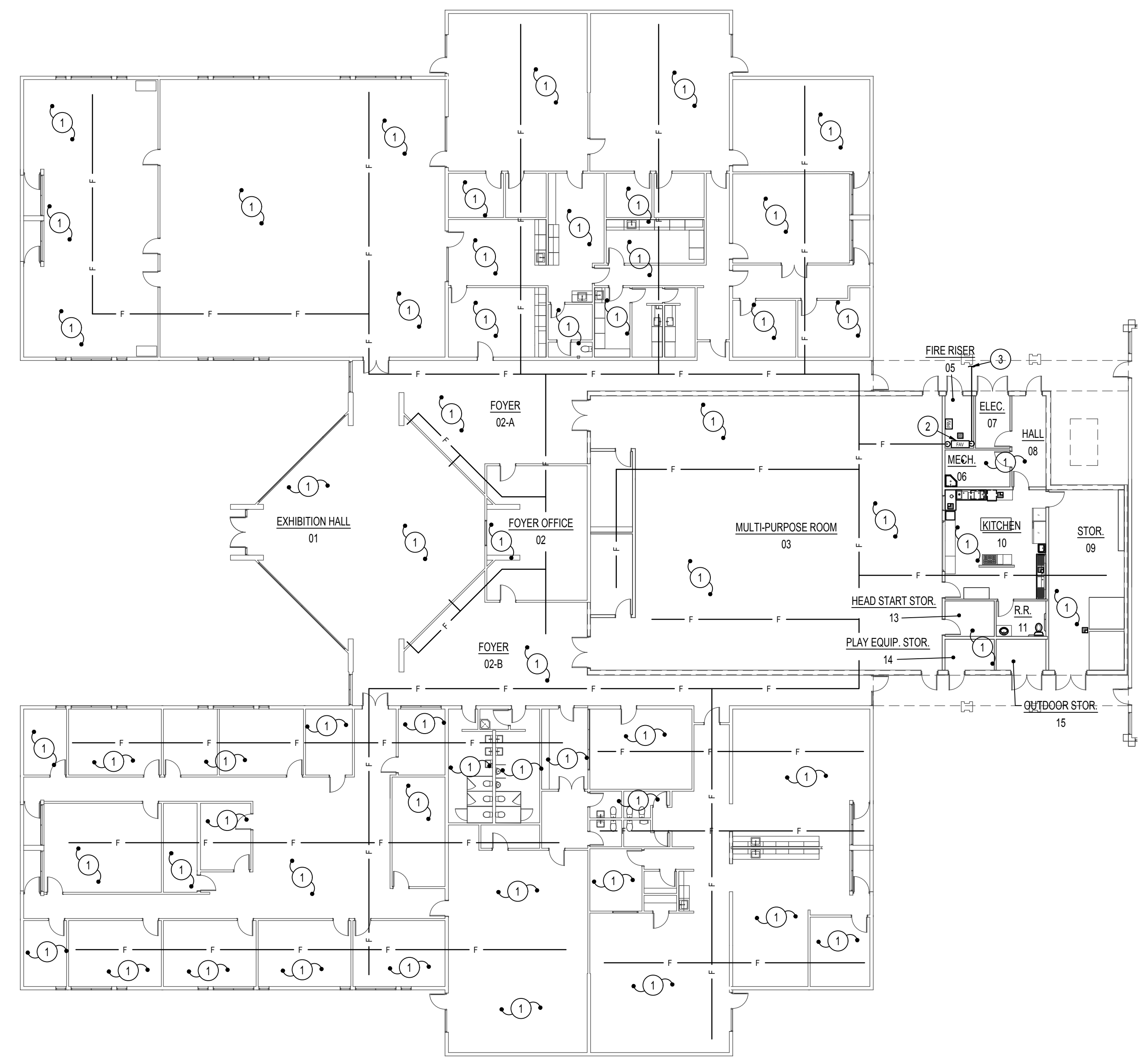
WET RISER DETAIL NOTES

- 1 WATER SUPPLY FROM CITY WATER MAIN. USE CLASS 53 DUCTILE IRON WHEN CROSSING UNDER BLDG FOUNDATION.
- 2 USE FLEXIBLE GROOVED PIPE COUPLING ONLY IF SEISMIC BRACING IS REQUIRED. SEE NOTE #12.
- 3 GROOVED BUTTERFLY VALVE WITH INTEGRAL SUPERVISORY SWITCH.
- 4 DOUBLE CHECK BACKFLOW PREVENTER WITH RELATED TRIM AND GAUGES.
- 5 3-1/2" DIAMETER WATER GAUGE WITH 1/2" TEST AND ISOLATION VALVE.
- 6 VANE TYPE WATER FLOW SWITCH.
- 7 SUPPLY TO WET PIPE FIRE SPRINKLER SYSTEM.
- 8 SWING CHECK VALVE.
- 9 RISER MANIFOLD - INCLUDES PRESURE GAUGE, FLOW SWITCH, PRESSURE RELIEF VALVE, AND TEST AND MAIN DRAIN DEVICE.
- 10 INSPECTOR'S TEST & MAIN DRAIN DEVICE [IT] PIPE TO OUTSIDE.
- 11 PRESSURE RELIEF VALVE SHALL BE REQUIRED SET AT 175 PSI.- PIPED TO DISCHARGE OUTSIDE.
- 12 SEISMIC BRACING REQUIRED IN SEISMIC DESIGN CATEGORY C, D, E, F.
- 13 1/2" AUTOMATIC BALL DRIP VALVE.
- 14 PIPE TO DRAIN OUTSIDE.
- 15 WEATHERPROOF ELECTRIC BELL OR HORN AND STROBE (OUTSIDE).
- 16 OUT TO FIRE DEPARTMENT CONNECTION WITH GALVANIZED SCH 40 PIPING- PROVIDE BALL DRIP WHEN TRAPPING PIPE. SIZE CONNECTION AS REQUIRED. NOTE: PIPE FDC TO REMOTE LOCATION ON STAKE BUILDINGS AND WHEN REQUIRED BY FIRE MARSHAL.
- 17 GALVANIZED FLANGE AND SPOOL PIECE
- 18 CLASS 53 D.I. FLANGED SPIGOT
- 19 3/4" A.T.R.
- 20 3/4" BENT EYE BOLT
- 21 MECHANICAL JOINT 90° ELL
- 22 CONCRETE THRUST BLOCK WITH 5 SQ. FEET BEARING AREA
- 23 UNDISTURBED EARTH
- 24 LOW TEMPERATURE SENSOR - MOUNTED ON WALL - THIS SWITCH IS PROVIDED UNDER DIVISION 28 OF THE SPECIFICATIONS.
- 25 SPARE HEAD CABINET WITH SPARE SPRINKLER HEADS AND WRENCHES.
- 26 LAMINATED SYSTEM MAP WITH SYSTEM START-UP AND SHUT-DOWN INSTRUCTIONS.



NOTE:
 PROVIDE SLEEVES WHERE PIPING PENETRATES BUILDING AT FLOOR AND WALLS. SEAL AROUND PENETRATION WITH FLEXIBLE MASTIC AT FLOOR. PROVIDE 2" ANNULAR SPACE AROUND AND RESTRAIN FLANGE SPIGOT.

VERTICAL FIRE RISER DETAIL
 NO SCALE



FIRE PROTECTION FLOOR PLAN
 SCALE: 1/16" = 1'-0" North

HYDRAULIC DESIGN INFORMATION FOR WET SYSTEM				
REMOTE AREA =	_____ SQUARE FEET			
DENSITY =	_____ GPM / SQUARE FEET			
RISER BASE _____ GPM _____ PSI				
SUPPLY _____	STATIC PSI	RESIDUAL PSI	GPM FLOWING	GPM @ 20 PSI

FIRE SPRINKLER LEGEND				
	UPRIGHT HEAD		FIRE ALARM PULL STATION	
	PENDENT SEMI-RECESSED HEAD		FIRE EXTINGUISHER	
	SURFACE MOUNTED HEAD WITH ESCHUTCHEON		SYSTEM MAIN RISER	
	DRY SIDEWALL HEAD		PIPE CAP	
	FIRE ALARM GONG		FIRE DEPARTMENT CONNECTION	

HEAD COUNT								
SPRINKLER	K-FACTOR	ORIFICE	FINISH	TYPE	CANOPY	DEGREE	GLASS BULB COLOR	QTY
	5.6	1/2"	WHITE	UPRIGHT	INTERMEDIATE TEMPERATURE	175-225		
	5.6	1/2"	WHITE	PENDANT	SEMI-RECESSED	175-225		
	5.6	1/2"	WHITE	PENDANT	SURFACE MOUNTED	175-225		
	5.6	1/2"	WHITE	SIDEWALL	SEMI-RECESSED	175-225		

- PLAN NOTES:**
- 1 PROVIDE AND INSTALL COMPLETE FIRE SPRINKLER SYSTEM WITH ALL ASSOCIATED PIPING, HEADS AND VALVES THROUGHOUT BUILDING AS PER NFPA 13 CODE REQUIREMENTS.
 - 2 NEW 6" FIRE RISER. SEE DETAIL ON THIS SHEET.
 - 3 SEE CIVIL SITE PLAN FOR CONTINUATION OF 6" FIRE LINE.

- GENERAL NOTES:**
- A- FIRE SPRINKLER MAINS & BRANCHES ARE SHOWN ONLY TO REPRESENT COVERAGE. SUCCESSFUL BIDDER TO PROVIDE COMPLETE PLANS & HYDRAULIC CALCULATIONS AS REQUIRED BY NFPA-13. SEE SPECIFICATION DIVISION 21.
 - B- THE CONTRACTOR SHALL CHECK AND VERIFY ALL DIMENSIONS AND CONNECTIONS ON THE JOB SITE. ALL WORK SHALL BE EXECUTED FROM MEASUREMENTS TAKEN AT THE SITE.
 - C- IT IS CRITICAL THAT THIS CONTRACTOR COORDINATE PIPING LOCATIONS WITH OTHER PIPING, DUCTWORK, ELECTRICAL CONDUIT AND BUILDING STRUCTURE TO INSURE CODE COMPLIANCE.

Engineered Systems Associates
 1355 EAST CENTER
 POCATELLO, IDAHO 83201
 PHONE: (208) 233-0501
 FAX: (208) 233-0529
 EMAIL: esa@engsystems.com
 ESA JOB NUMBER: 19033

Dwayne C. Sudweeks
 PROFESSIONAL ENGINEER
 REGISTERED
 STATE OF IDAHO
 DWAYNE C. SUDWECKS
 Aug 13, 2020

NO.	REVISIONS	DATE

The document or any part thereof in detail or design concept is the personal property of Keller Associates, Inc. and shall not be copied, reproduced, or transmitted in any form without the written authorization of Keller Associates, Inc.

SBT HRDC ROOF COLLAPSE
 FORT HALL, IDAHO
 FIRE PROTECTION PLUMBING PLAN

DRAWN: _____ CHECK: _____
 VERIFY SCALE: Scales based on 22"x34" prints.
 PROJECT NO. 219064-000
 SHEET NO. P100