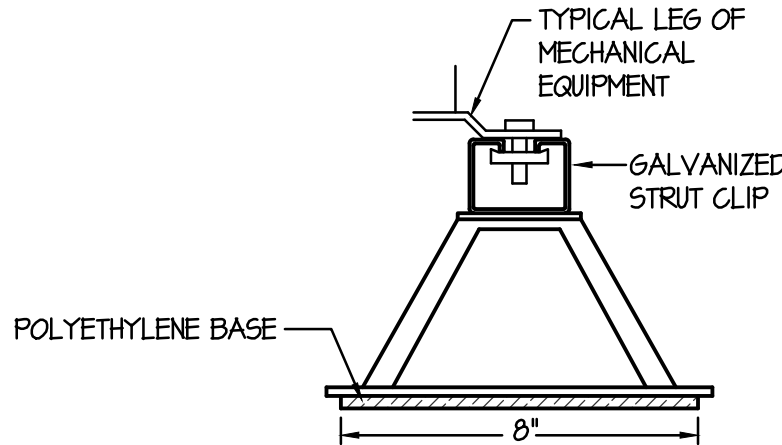
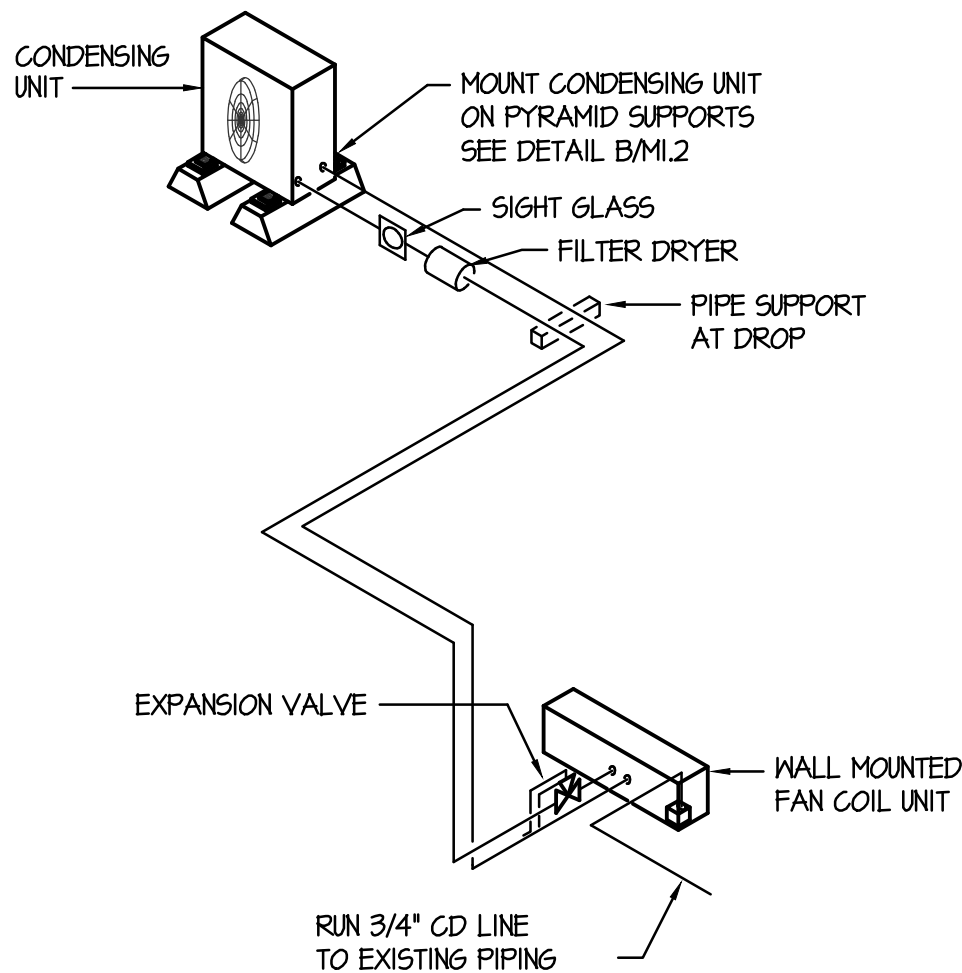


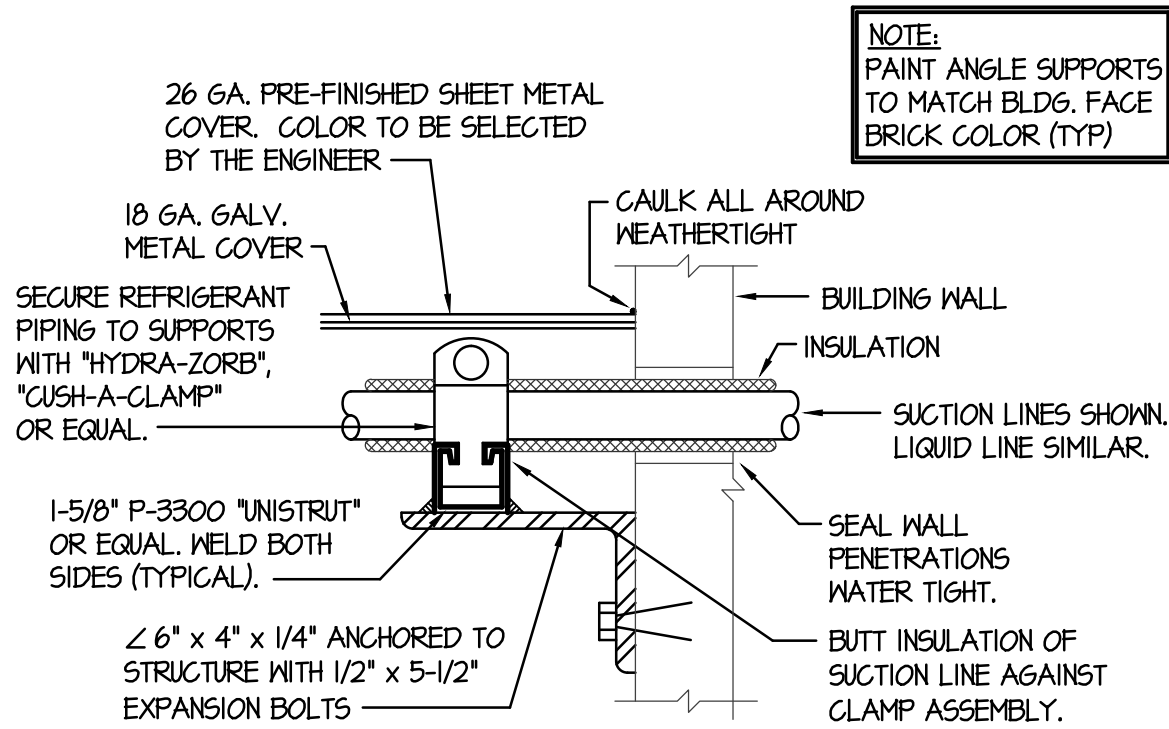
A ROOF DRAIN DETAIL  
NO SCALE



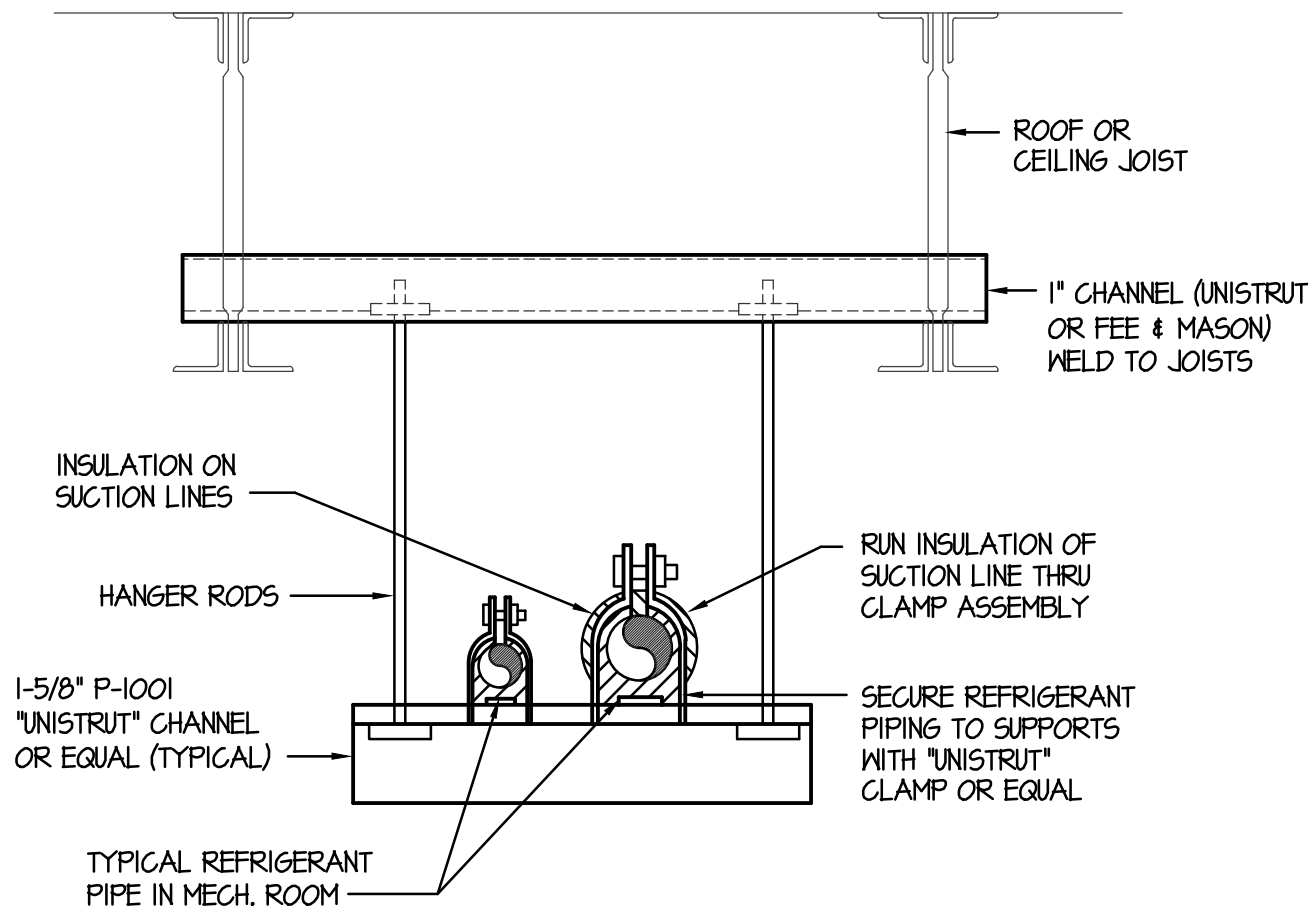
B EQUIPMENT SUPPORT DETAILS  
NO SCALE



C REFRIGERANT PIPING DIAGRAM  
NO SCALE



D REFRIG. PIPING SUPPORT AT WALL  
NO SCALE



E REFRIGERANT PIPE SUPPORT DETAIL  
NO SCALE

NOTE:  
ALL PIPING SUPPORTS  
ARE TO BE INSTALLED  
PRIOR TO FIREPROOFING  
OF JOISTS. NO PIPING  
SUPPORTS ARE TO BE  
ATTACHED AFTER  
FIREPROOFING HAS  
BEEN DONE.

## ELECTRIC HEATER SCHEDULE

| SYM. | TYPE                  | BTU  | KW  | CHAR     | CONTROL  | REMARKS   |
|------|-----------------------|------|-----|----------|----------|---|
| EH-1 | RECESSED WALL MOUNTED | 6824 | 2   | 208/60/1 | INTEGRAL | QMARK MODEL AMH440BF WITH AMH-SI RECESSED MOUNTING FRAME. |
| EH-2 | RECESSED WALL MOUNTED | 6824 | 2   | 208/60/1 | INTEGRAL | QMARK MODEL AMH440BF WITH AMH-SI RECESSED MOUNTING FRAME. |
| EH-3 | RECESSED WALL MOUNTED | 5120 | 1.5 | 208/60/1 | INTEGRAL | QMARK MODEL AMH4404F WITH AMH-SI RECESSED MOUNTING FRAME. |
| EH-4 | RECESSED WALL MOUNTED | 5120 | 1.5 | 208/60/1 | INTEGRAL | QMARK MODEL AMH4404F WITH AMH-SI RECESSED MOUNTING FRAME. |

## GRILLE AND REGISTER SCHEDULE

| SYM. | SIZE  | THROW | CFM   | CONSTR. | FINISH | BRANCH DUCT | F.D. | O.B. | REMARKS  |
|------|-------|-------|-------|---------|--------|-------------|------|------|--|
| RG-1 | 24x12 | -     | 0-200 | STEEL   | WHITE  | NONE        | NO   | NO   | PRICE LG75 SERIES. CUT INTO TILE WHERE REQUIRED. |

## SPLIT SYSTEM A/C UNIT SCHEDULE

| SYM.   | CFM     | BTU    | CHAR     | MCA | MANUFACTURER ①  | SYM.     | BTU    | CHAR     | MCA | REFRIG. LINES  |         |      |
|--|---------|--------|----------|-----|---|----------|--------|----------|-----|--|---------|------|
|  |         |        |          |     |   |          |        |          |     | LIQUID   | SUCTION |      |
| FC<br>1A                                     | 600-750 | 30,000 | 208/60/1 | 1   | MITSUBISHI MODEL PKA-A301KA<br>WITH WALL MOUNTED CONTROLLER | FC<br>1B | 30,000 | 208/60/1 | 25  | MITSUBISHI MODEL RZ-A30NH43<br>WITH LOW AMBIENT 'HARD-START' KIT | 3/8"    | 5/8" |
|  |         |        |          |     |   |          |        |          |     |  |         |      |
| ① PROVIDE CONDENSATE PUMP WITH INDOOR UNITS. |         |        |          |     |   |          |        |          |     |  |         |      |

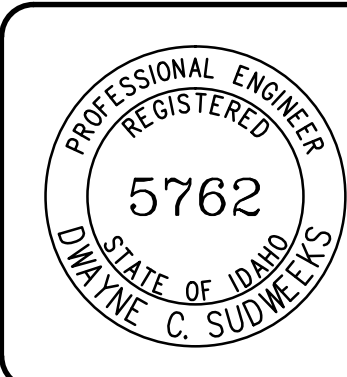
## FIXTURE SCHEDULE

| SYM. | DESCRIPTION   | HOT | COLD | WASTE | VENT |
|------|---|-----|------|-------|------|
| HB-1 | EXTERIOR HOSE BIBB - ZURN Z-1310 'ECOLOTRON' WITH VACUUM BREAKER. LENGTH TO SUIT WALL THICKNESS.          | --- | 3/4" | ---   | ---  |
| RD-1 | 3" ROOF DRAIN - JAY R SMITH MODEL 1010 WITH DOME STRAINED, UNDER DECK CLAMP AND 3" DRAIN LINE CONNECTION. | --- | ---  | 3"    | ---  |
| WF-1 | 3" WALL FLANGE - JAY R SMITH MODEL 1710 WITH NICKEL BRONZE FINISH AND WALL FLANGE.                        | --- | ---  | 3"    | ---  |

DPW#19238 ISU FAMILY MEDICINE & DENTISTRY  
ADA ELEVATOR, BLDG #83  
IDAHO STATE UNIVERSITY, POCATELLO, IDAHO

MECHANICAL SCHEDULES AND DETAILS

ORIGINAL DRAWING SIGNED BY: DWAYNE C. SUDMEERS  
DATE ORIGINAL SIGNED: May 1, 2019  
ORIGINAL ON FILE AT ENGINEERED SYSTEMS ASSOCIATES  
1355 EAST CENTER, POCATELLO, IDAHO 83201



**Engineered Systems Associates**  
1355 EAST CENTER  
POCATELLO, IDAHO 83201  
PHONE: (208) 233-0501  
FAX: (208) 233-0529  
EMAIL: esa@engsystems.com  
ESA JOB NUMBER: 19002

REVISIONS:

DATE:  
5-1-19

JOB NO.  
1917

DRAWING NO.

M1.2

OF

**JENSEN HAYES SHROPSHIRE ARCHITECTS, P.A.**

COPYRIGHT 2019  
JENSEN HAYES SHROPSHIRE  
ARCHITECTS, P.A.

125 NORTH GARFIELD  
POCATELLO, IDAHO 83204  
(208) 232-1223