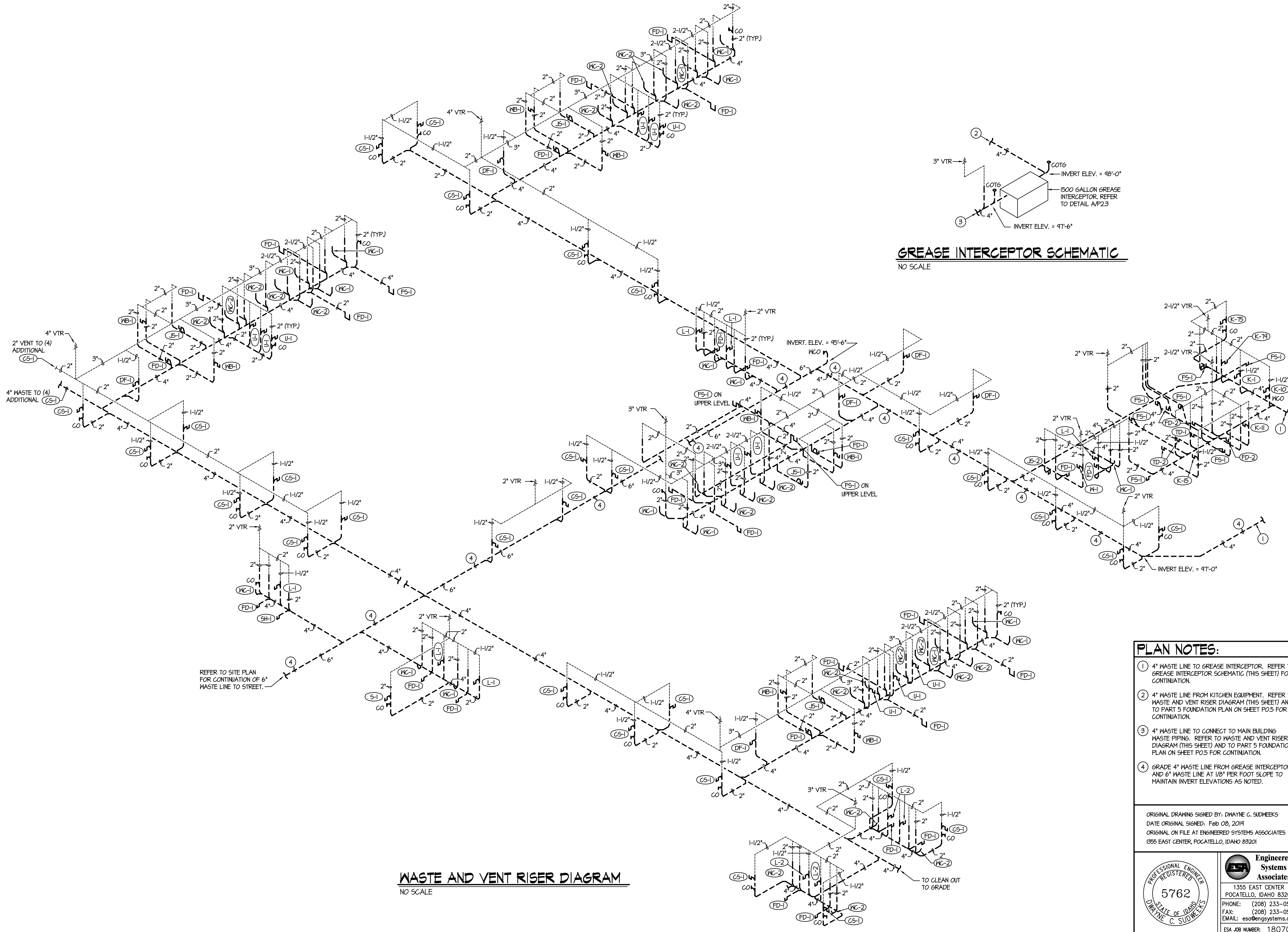


2/2/2019 9:30:02 AM F:\18\18070 Jefferson Co. Elem. (Rigby)\18070-P2.5.dwg



GREASE INTERCEPTOR SCHEMATIC
NO SCALE

WASTE AND VENT RISER DIAGRAM
NO SCALE

PLAN NOTES:

- ① 4" WASTE LINE TO GREASE INTERCEPTOR. REFER TO GREASE INTERCEPTOR SCHEMATIC (THIS SHEET) FOR CONTINUATION.
- ② 4" WASTE LINE FROM KITCHEN EQUIPMENT. REFER TO WASTE AND VENT RISER DIAGRAM (THIS SHEET) AND TO PART 5 FOUNDATION PLAN ON SHEET P0.5 FOR CONTINUATION.
- ③ 4" WASTE LINE TO CONNECT TO MAIN BUILDING WASTE PIPING. REFER TO WASTE AND VENT RISER DIAGRAM (THIS SHEET) AND TO PART 5 FOUNDATION PLAN ON SHEET P0.5 FOR CONTINUATION.
- ④ GRADE 4" WASTE LINE FROM GREASE INTERCEPTOR AND 6" WASTE LINE AT 1/8" PER FOOT SLOPE TO MAINTAIN INVERT ELEVATIONS AS NOTED.

ORIGINAL DRAWING SIGNED BY: DWAYNE G. SUDWEEKS
DATE ORIGINAL SIGNED: Feb 08, 2014
ORIGINAL ON FILE AT ENGINEERED SYSTEMS ASSOCIATES
1855 EAST CENTER, POCAHELLO, IDAHO 83201

	Engineered Systems Associates 1355 EAST CENTER POCAHELLO, IDAHO 83201 PHONE: (208) 233-0501 FAX: (208) 233-0529 EMAIL: esa@engsystems.com ESA JOB NUMBER: 18070
	PROJECT NO. 18012 DATE: FEBRUARY 2019 DRAWN BY: M. JENSEN CHECKED BY: D. SUDWEEKS DRAWING NO.:

nbw architects p.a.
ARCHITECTURE / PLANNING / INTERIORS
SCOTT L. NIELSON, A.I.A., KEVIN R. BODILY, A.I.A., JAMES H. WYATT, A.I.A.
990 JOHN BARNES PARKWAY P.O. BOX 2212 - IDAHO FALLS, IDAHO 83402-2212
(P) 208-522-8779 (F) 208-522-8765 (W) nbwarchitects.com

NEW ELEMENTARY SCHOOL FOR
JEFFERSON COUNTY SCHOOL DISTRICT 251
ELEMENTARY SCHOOL
RIGBY, IDAHO
PROJECT: 18012
SHEET TITLE: WASTE AND VENT RISER DIAGRAM

REVISIONS
2-12-19 CONSTRUCTION SET

P2.5