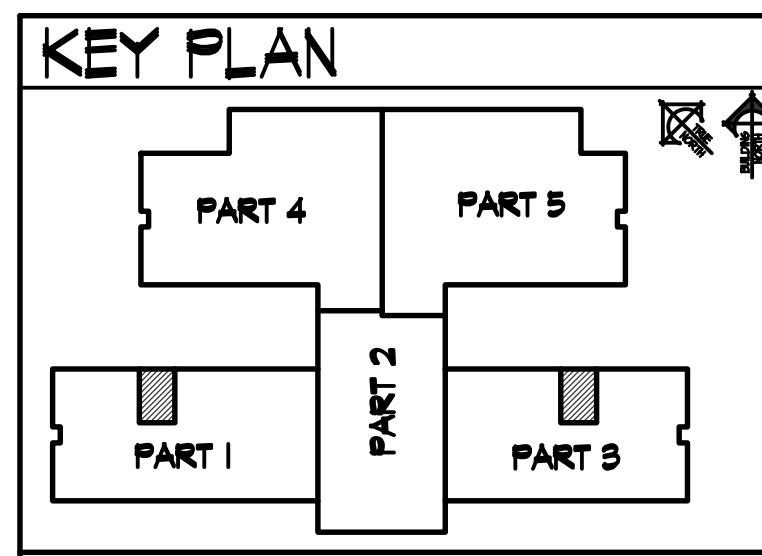


REVISIONS	
NO.	DESCRIPTION
1-12-19	CONSTRUCTION SET

PROJECT NO.
18012
 DATE:
FEBRUARY 2019
 DRAWN BY:
M JENSEN
 CHECKED BY:
D SUDWEEKS

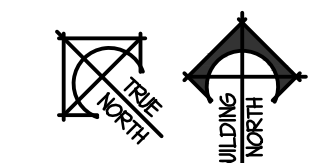
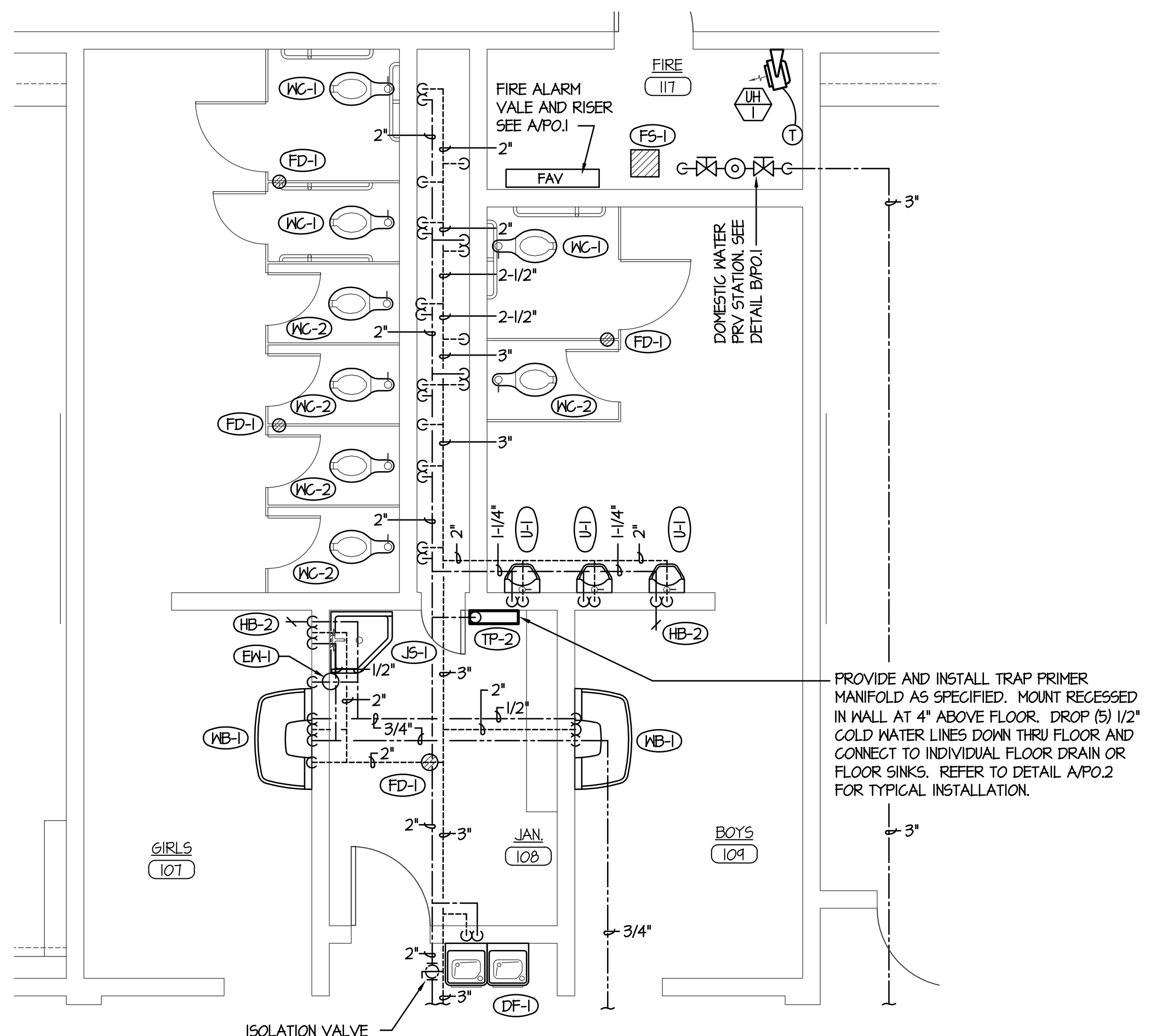
DRAWING NO.:
P2.1



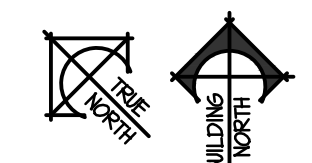
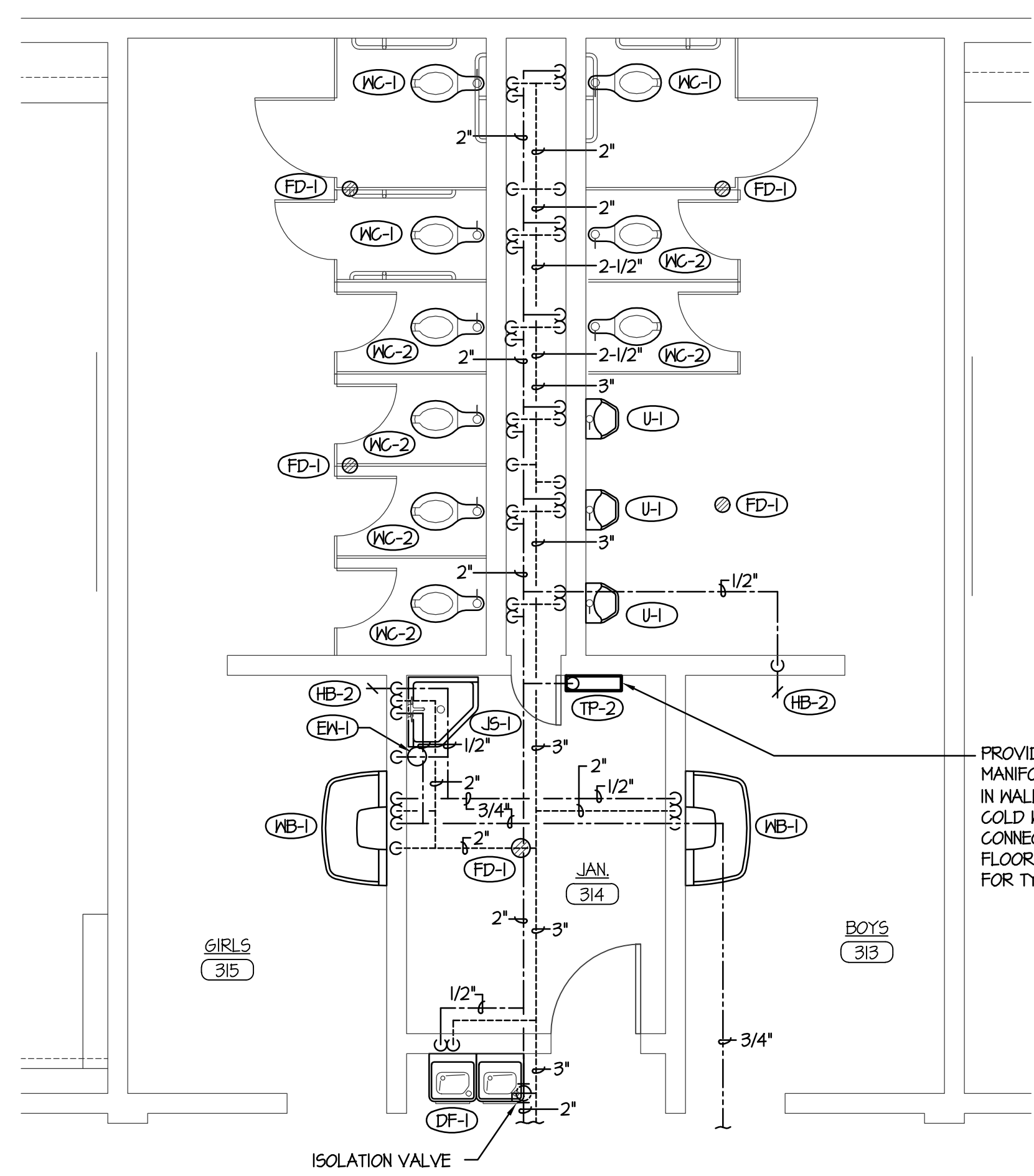
ORIGINAL DRAWING SIGNED BY: DWAYNE C. SUDWEEKS
 DATE ORIGINAL SIGNED: Feb 08, 2019
 ORIGINAL ON FILE AT ENGINEERED SYSTEMS ASSOCIATES
 1355 EAST CENTER, POCAHELLO, IDAHO 83201

PROFESSIONAL ENGINEER
REGISTERED
STATE OF IDAHO
DWAYNE C. SUDWEEKS
5762

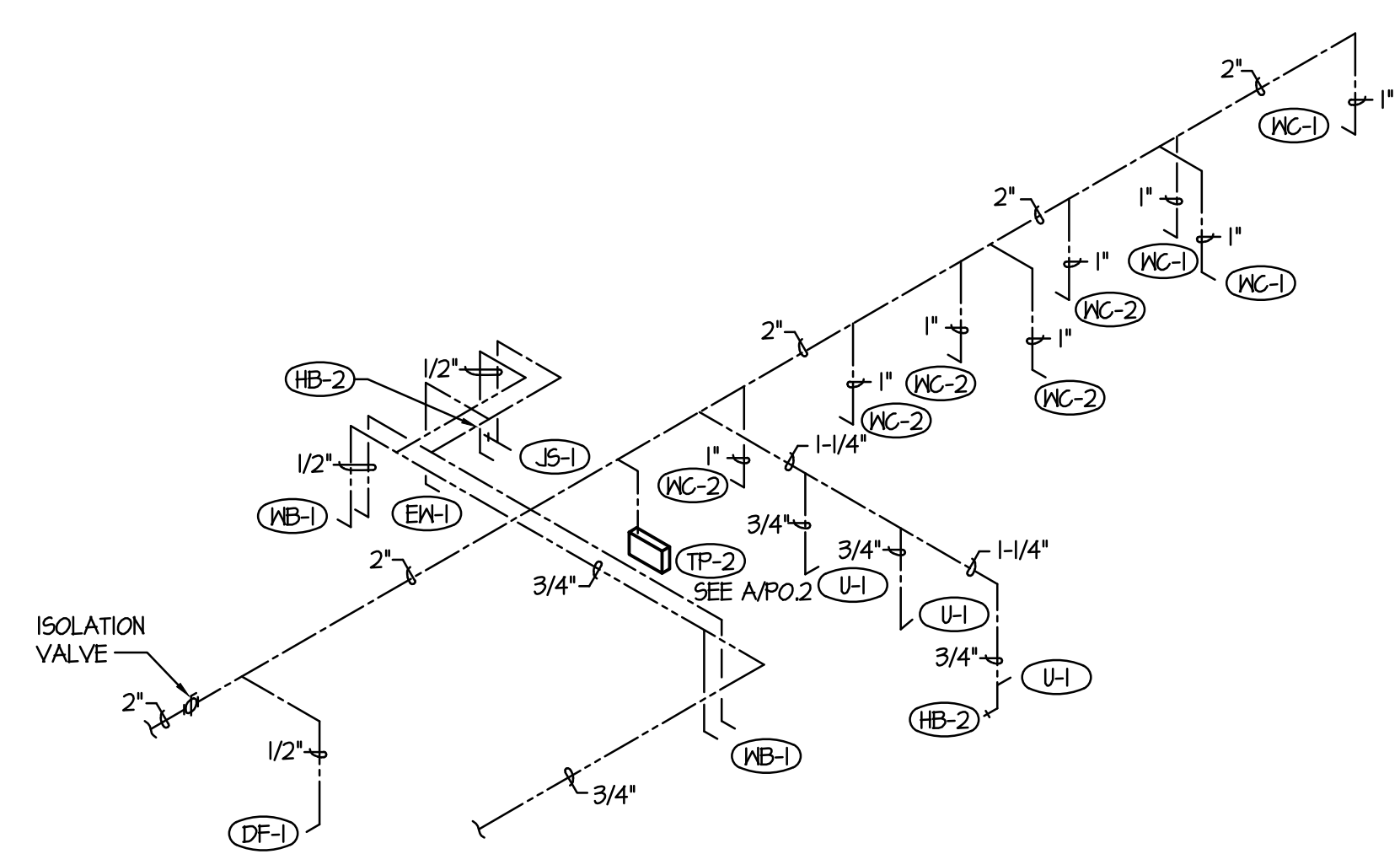
Engineered Systems Associates
 1355 EAST CENTER
 POCAHELLO, IDAHO 83201
 PHONE: (208) 233-0501
 FAX: (208) 233-0529
 EMAIL: esa@engsystems.com
 ESA JOB NUMBER: 18070



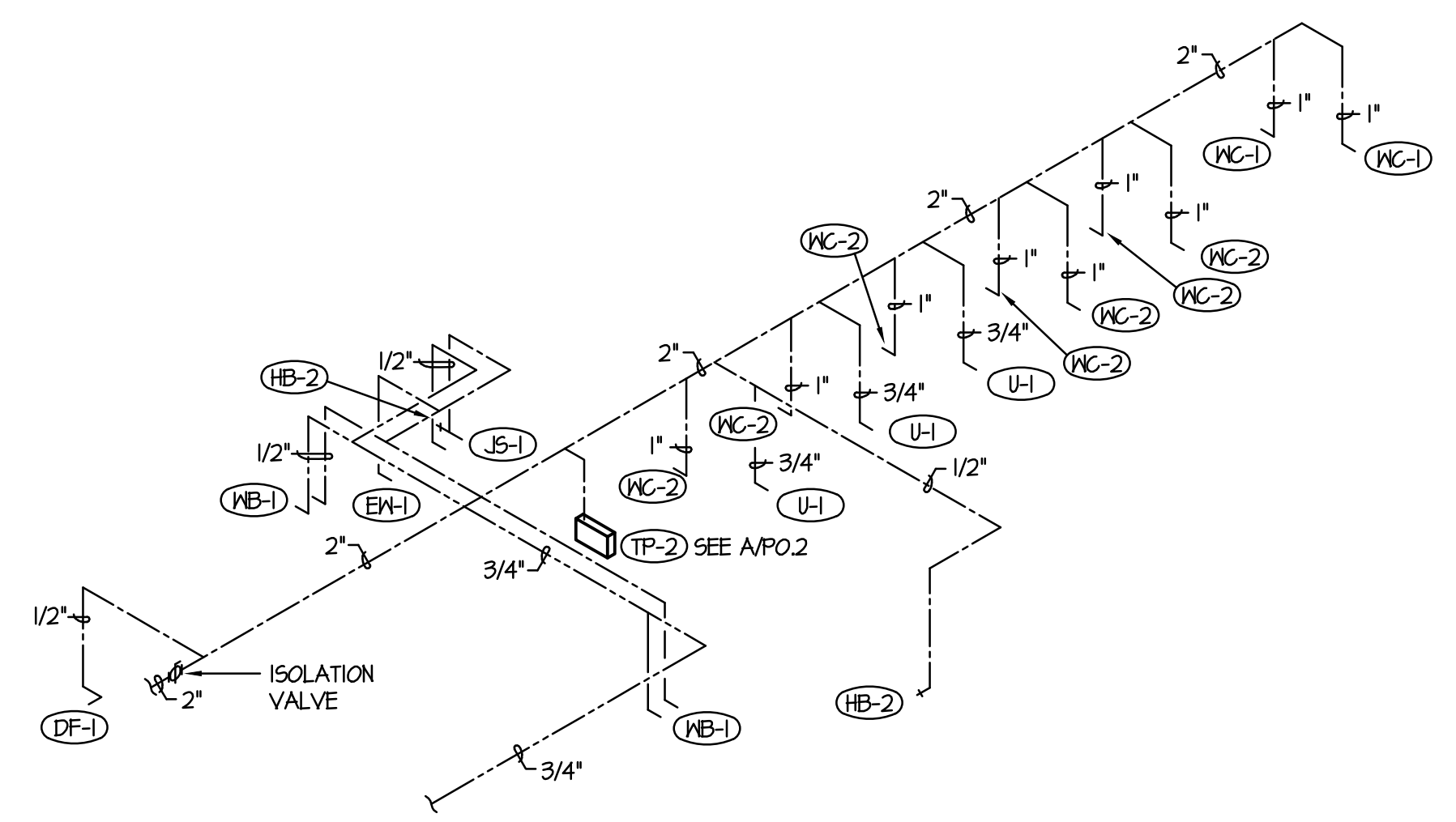
A | LARGE SCALE TOILET ROOMS 107 & 109 SCALE: 1/4" = 1'-0"



B | LARGE SCALE TOILET ROOMS 313 & 315 SCALE: 1/4" = 1'-0"



C | WATER PIPING ISOMETRIC FOR TOILET ROOMS 107 & 109 NO SCALE



D | WATER PIPING ISOMETRIC FOR TOILET ROOMS 313 & 315 NO SCALE

2/9/2019 9:28:31 AM F:\18\18070 Jefferson Co. Elem (Rigby)\18070-P2.1.dwg