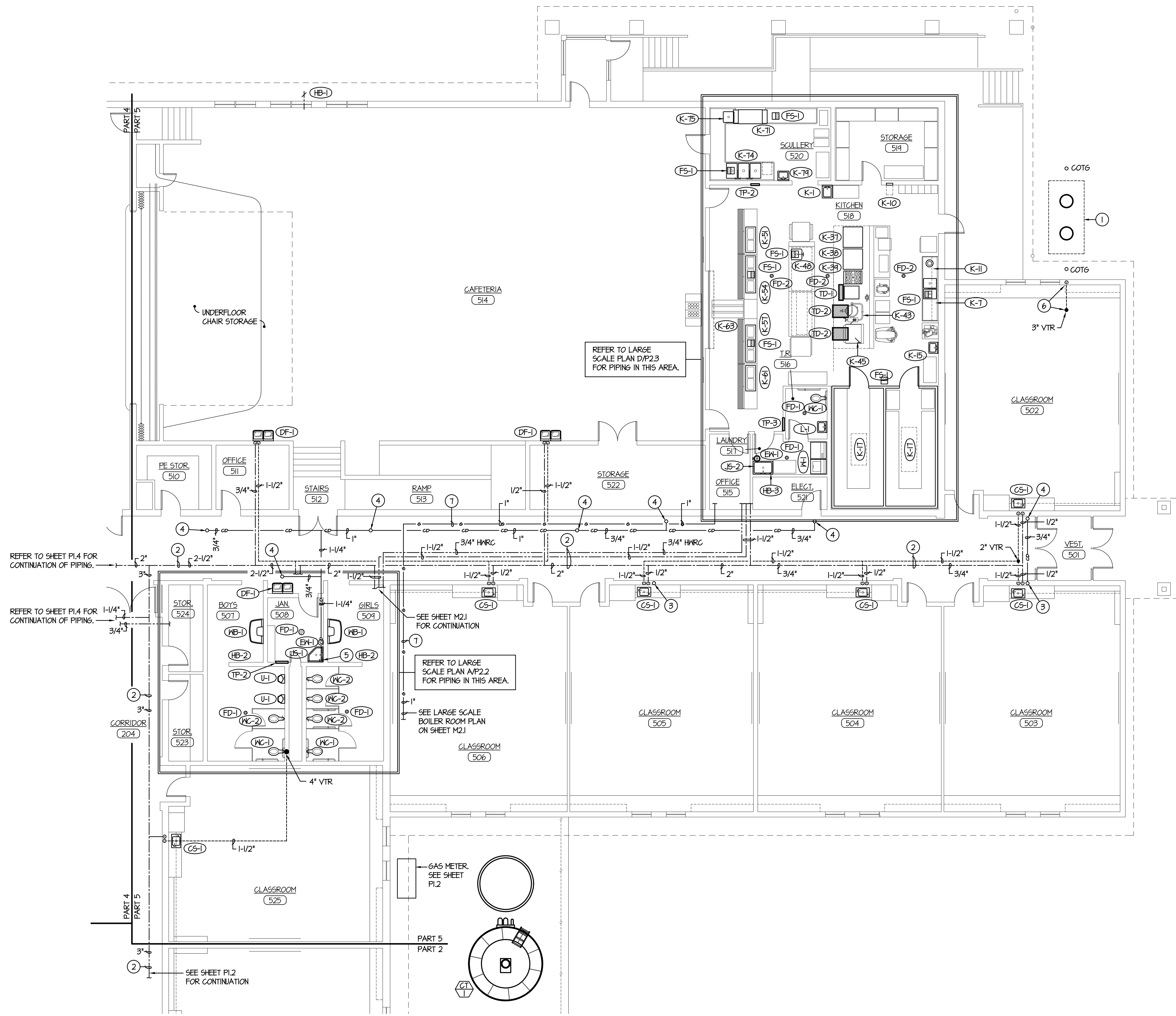
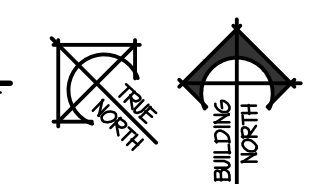


2/9/2019 9:28:05 AM F:\18070\18070 Jefferson Co. Elem (Rigby)\18070-P1.5.dwg

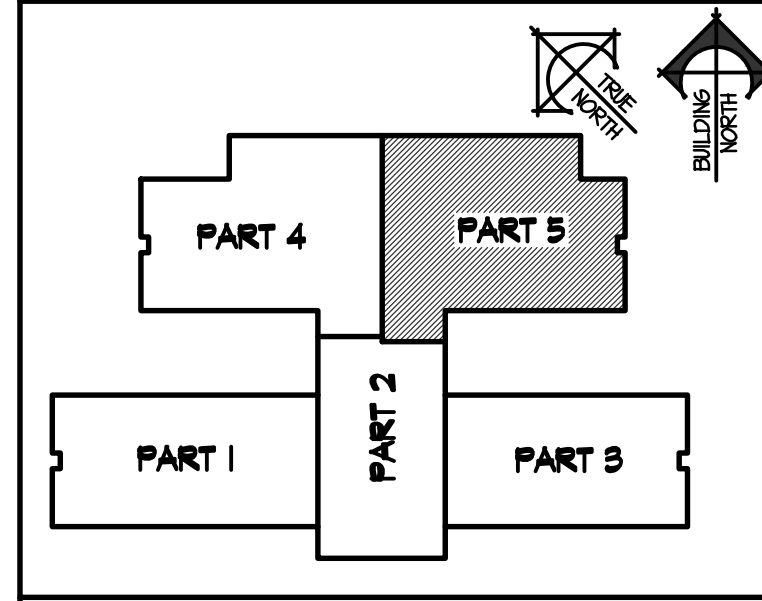


**MAIN LEVEL PLUMBING FLOOR PLAN - PART 5**  
SCALE: 1/8" = 1'-0"



- PLAN NOTES:**
- 1500 GALLON GREASE INTERCEPTOR BELOW GRADE WITH (2) 24"Ø ACCESS HOLES. REFER TO FOUNDATION PLAN ON SHEET P05 FOR LOCATION AND TO DETAIL A/P2.3 FOR TYPICAL CONSTRUCTION AND PIPE CONNECTIONS.
  - RUN DOMESTIC WATER PIPING AND VENT PIPING AT FLOOR OF MEZZANINE LEVEL. SUPPORT WITH UNISTRUT PIPE SUPPORTS ON FLOOR.
  - DROP 3/4" CONDENSATE DRAIN LINE DOWN IN WALL AND EXTEND OUT BELOW CABINET. CONNECT COND. DRAIN LINE TO SINK SIDE OF P-TRAP WITH DISHWASHER TYPE CONNECTION. REFER TO DETAIL C/P1.3 FOR CONNECTION TO SINK.
  - RISE 3/4" CONDENSATE DRAIN LINE UP THRU MEZZANINE FLOOR AND CONNECT TO HEAT PUMP ABOVE. REFER TO SHEET M1.8 FOR UNIT LOCATION AND CONTINUATION OF PIPING.
  - DROP 1/4" CONDENSATE DRAIN LINE DOWN IN WALL AND EXTEND OUT TO SERVICE SINK. REFER TO DETAIL B/P0.3 FOR TERMINATION OF DRAIN LINE.
  - RAISE 3" VENT LINE UP IN WALL TO ABOVE CLASSROOM CEILING. OFFSET AS REQUIRED TO EXTEND THRU ROOF AS 3'-0" MINIMUM FROM EDGE OF BUILDING.
  - RUN GAS PIPING IN MEZZANINE WALKWAY ABOVE. COORDINATE WITH EQUIPMENT AND DUCTWORK. REFER TO SHEET M1.8.

**KEY PLAN**



ORIGINAL DRAWING SIGNED BY: DWAYNE C. SUDWEEKS  
DATE ORIGINAL SIGNED: Feb 08, 2019  
ORIGINAL ON FILE AT ENGINEERED SYSTEMS ASSOCIATES  
1355 EAST CENTER, POCA TELLO, IDAHO 83201

**Engineered Systems Associates**  
1355 EAST CENTER  
POCA TELLO, IDAHO 83201  
PHONE: (208) 233-0501  
FAX: (208) 233-0529  
EMAIL: esa@engsystems.com  
ESA JOB NUMBER: 18070

**nbw architects p.a.**  
ARCHITECTURE / PLANNING / INTERIORS  
SCOTT L. NELSON, A.I.A. KEVIN R. BODILY, A.I.A. JAMES H. WYATT, A.I.A.  
990 JOHN ADAMS PARKWAY P.O. BOX 2212 - IDAHO FALLS, IDAHO 83402-2212  
(208) 208-522-8779 (F) 208-522-8785 (O) nbwarchitects.com

NEW ELEMENTARY SCHOOL FOR  
**JEFFERSON COUNTY SCHOOL DISTRICT 251**  
ELEMENTARY SCHOOL  
RIGBY, IDAHO

PROJECT:  
SHEET TITLE:  
**MAIN LEVEL PLUMBING PLAN - PART 5**

REVISIONS	CONSTRUCTION SET
2-12-19	

PROJECT NO.  
18012  
DATE:  
FEBRUARY 2019  
DRAWN BY:  
M JENSEN  
CHECKED BY:  
D SUDWEEKS

DRAWING NO.:  
**P1.5**