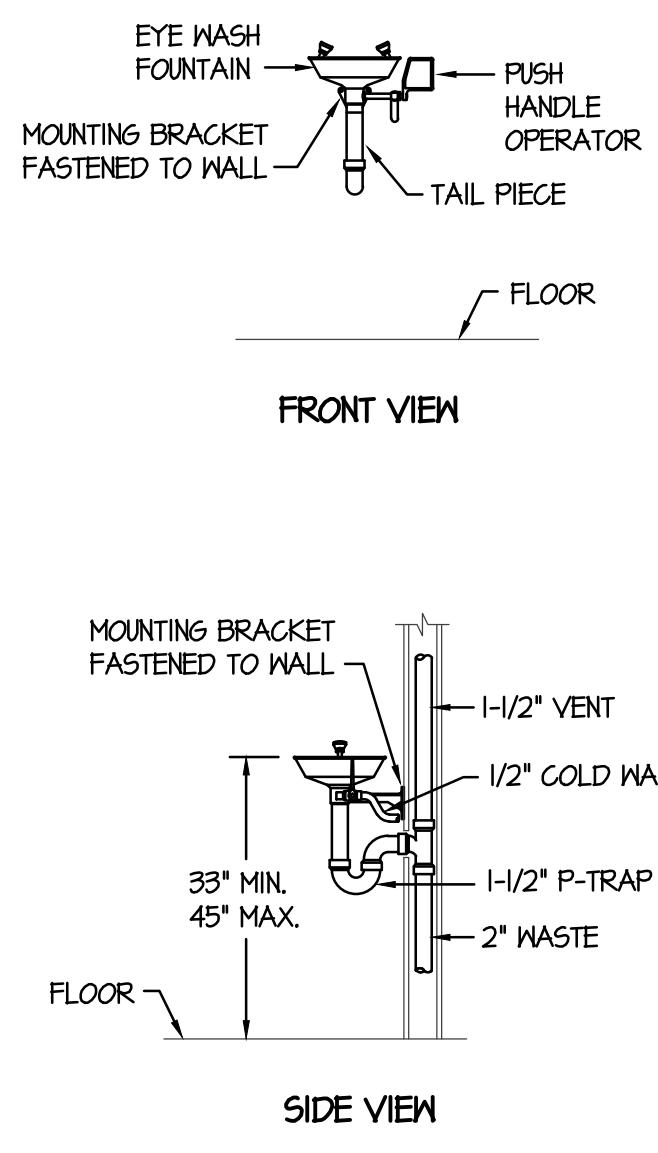
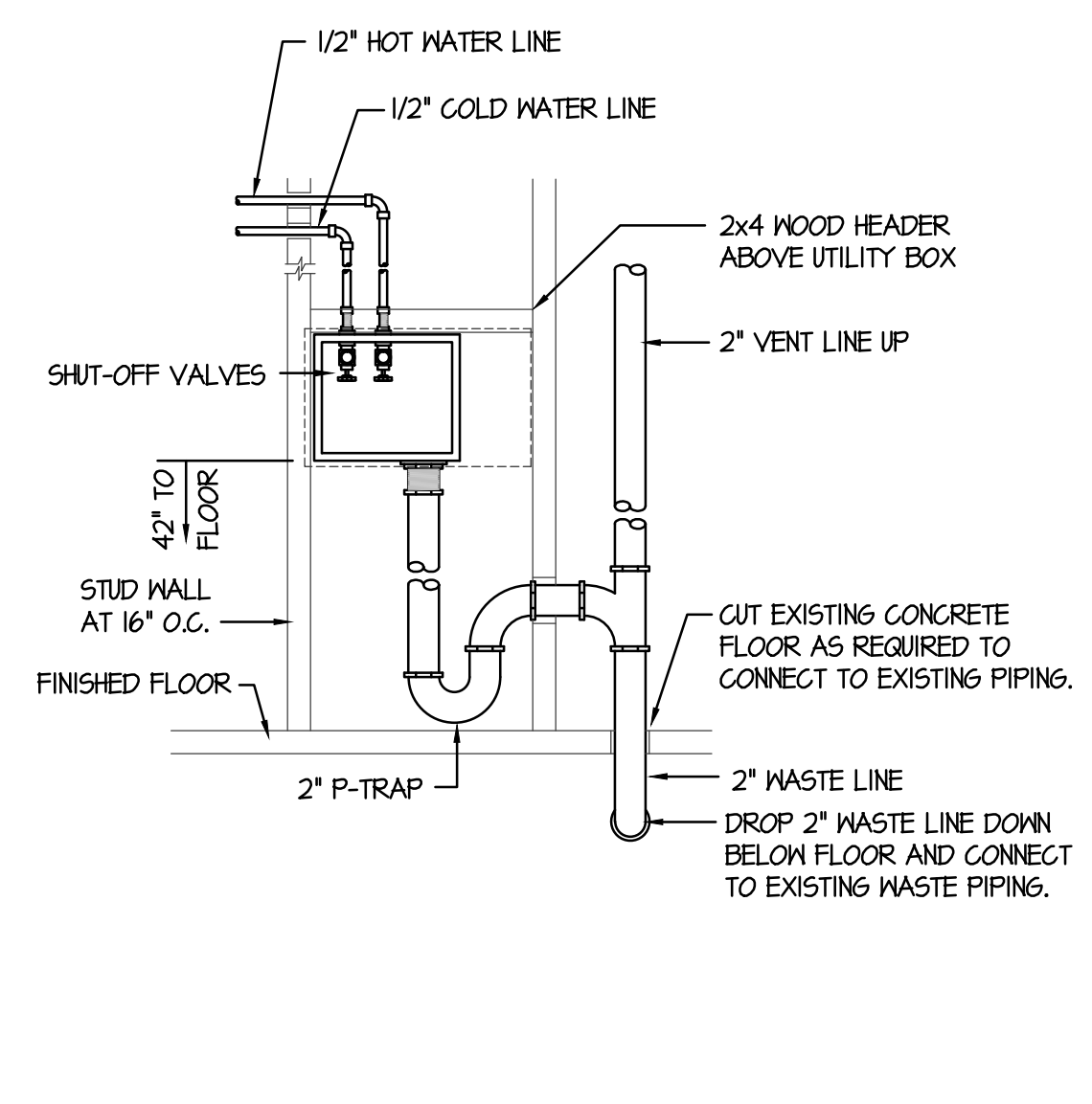


A GAS LINE CONNECTION DETAIL

NO SCALE

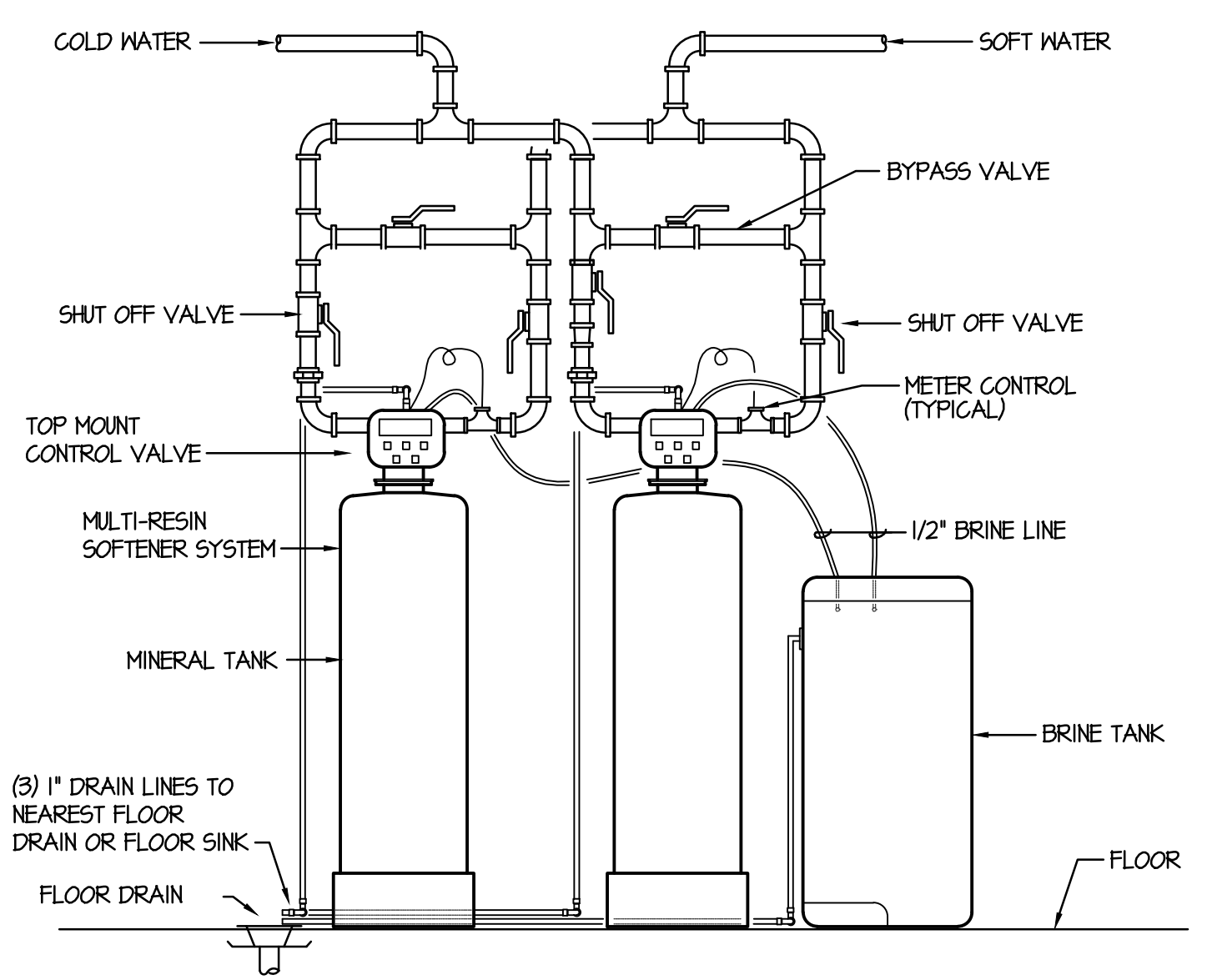


B EMERGENCY EYEWASH DETAIL



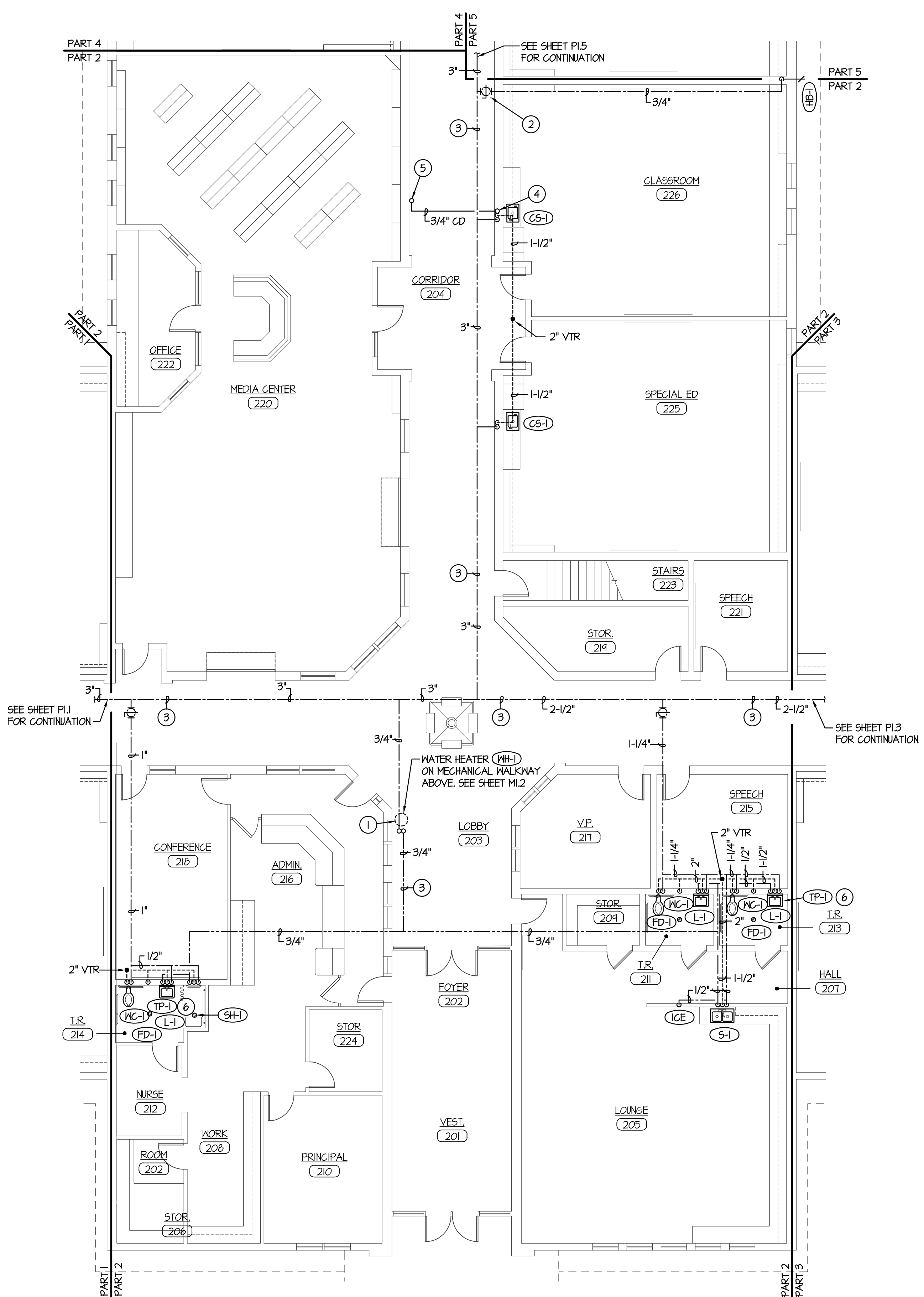
C WASHER BOX PIPING

NO SCALE



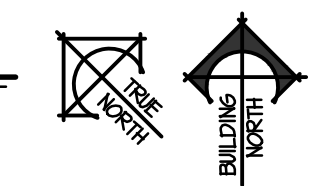
D WATER SOFTENER PIPING DIAGRAM

NO SCALE



MAIN LEVEL PLUMBING FLOOR PLAN - PART 2

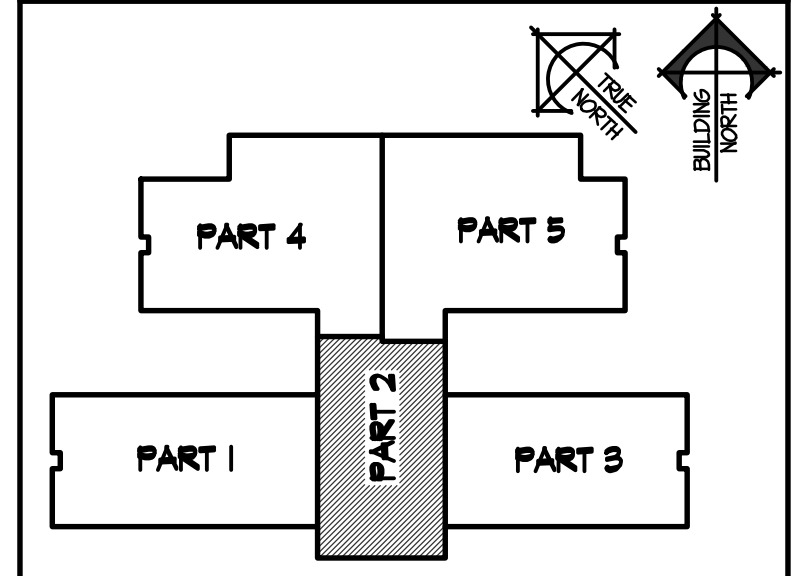
SCALE: 1/8" = 1'-0"



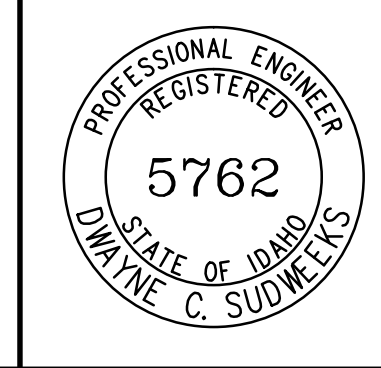
PLAN NOTES:

- RISE 3/4" HOT AND COLD WATER LINES UP AND CONNECT TO WATER HEATER LOCATED ON MEZZANINE LEVEL. REFER TO SHEET M1.2 FOR LOCATION OF WATER HEATER AND TO DETAIL C/P1.3 FOR PIPING CONNECTIONS.
- PROVIDE SHUT-OFF VALVE IN LINES SERVING HOSE BIBBS. PLACE VALVE IN ACCESSIBLE LOCATION ON MEZZANINE WALKWAY AND LABEL. GRADE WATER PIPING DOWN TOWARD HOSE BIBB FOR DRAINAGE DURING COLD MONTHS.
- RUN DOMESTIC WATER PIPING AND VENT PIPING AT FLOOR OF MEZZANINE LEVEL. SUPPORT WITH UNISTRUT PIPE SUPPORTS ON FLOOR.
- DROP 3/4" CONDENSATE DRAIN LINE DOWN IN WALL AND EXTEND OUT BELOW CABINET. CONNECT COND. DRAIN LINE TO SINK SIDE OF P-TRAP WITH DISHWASHER TYPE CONNECTION. REFER TO DETAIL C/P0.3 FOR CONNECTION TO SINK.
- RISE 3/4" CONDENSATE DRAIN LINE UP THRU MEZZANINE FLOOR AND CONNECT TO HEAT PUMP ABOVE. REFER TO SHEET M1.8 FOR UNIT LOCATION AND CONTINUATION OF PIPING.
- PROVIDE AND INSTALL TRAP PRIMER BELOW LAVATORY AS SPECIFIED. MOUNT RECESSED IN WALL AT 4" ABOVE FLOOR. DROP 1/2" COLD WATER LINE DOWN THRU FLOOR AND CONNECT TO FLOOR DRAIN. REFER TO DETAIL B/P0.2 FOR TYPICAL INSTALLATION.

KEY PLAN



ORIGINAL DRAWING SIGNED BY: DWAYNE C. SUDWEEKS
 DATE ORIGINAL SIGNED: Feb 08, 2019
 ORIGINAL ON FILE AT ENGINEERED SYSTEMS ASSOCIATES
 1355 EAST CENTER, POCAATELLO, IDAHO 83201



Engineered Systems Associates
 1355 EAST CENTER
 POCAATELLO, IDAHO 83201
 PHONE: (208) 233-0501
 FAX: (208) 233-0529
 EMAIL: esa@engsystems.com
 ESA JOB NUMBER: 18070

nbw architects p.a.
 ARCHITECTURE / PLANNING / INTERIORS
 SCOTT L. NELSON, A.I.A. KEVIN R. BODILY, A.I.A. JAMES H. WYATT, A.I.A.
 990 JOHN ADAMS PARKWAY P.O. BOX 2212 - IDAHO FALLS, IDAHO 83402-2212
 (P) 208-522-8779 (F) 208-522-8785 (W) nbwarchitects.com

NEW ELEMENTARY SCHOOL FOR
JEFFERSON COUNTY SCHOOL DISTRICT 251
 ELEMENTARY SCHOOL
 RIGBY, IDAHO
 MAIN LEVEL PLUMBING PLAN - PART 2

PROJECT NO. 18012
 DATE: FEBRUARY 2019
 DRAWN BY: M. JENSEN
 CHECKED BY: D. SUDWEEKS
 DRAWING NO.:

REVISIONS	DATE	DESCRIPTION
1	2-12-19	CONSTRUCTION SET

P1.2

2/9/2019 9:26:22 AM F:\18\18070 Jefferson Co. Elem (Rigby)\18070-P1.2.dwg