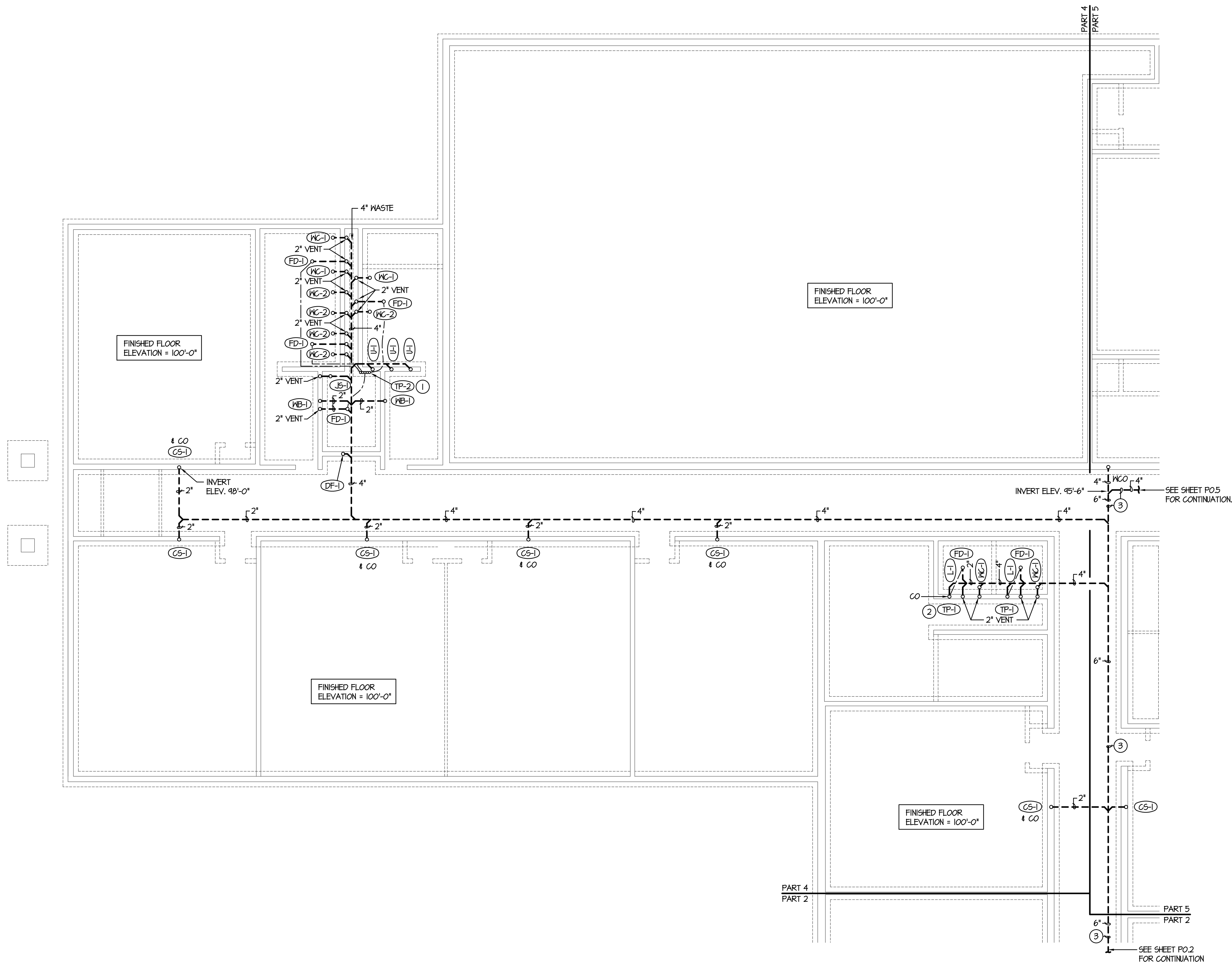
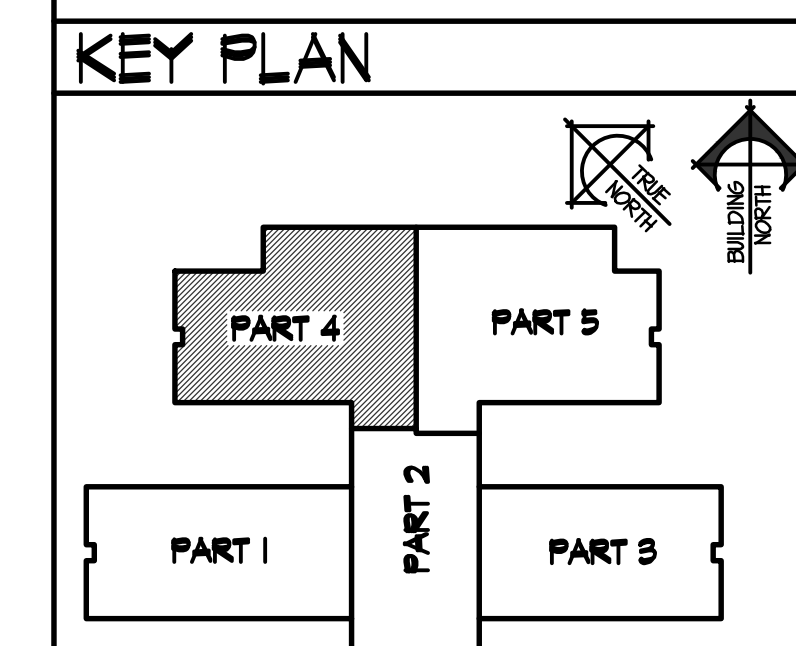


2/9/2019 9:24:58 AM F:\18\18070 Jefferson Co. Elem (Rigby)\18070-PO.4.dwg



**FOUNDATION LEVEL PLUMBING PLAN - PART 4**  
SCALE: 1/8" = 1'-0"

- PLAN NOTES:**
- TRAP PRIMER TO BE MOUNTED IN WALL ABOVE DROP SEPARATE 1/2" COLD WATER LINE DOWN THRU FLOOR FOR EACH FLOOR DRAIN OR FLOOR SINK. UNDER FLOOR COLD WATER LINE TO BE PEX TYPE PIPING WITH NO JOINTS BELOW SLAB. REFER TO DETAIL A/PO.2 FOR TYPICAL INSTALLATION.
  - TRAP PRIMER TO BE MOUNTED IN WALL BELOW LAVATORY. DROP 1/2" COLD WATER LINE DOWN THRU FLOOR AND CONNECT TO FLOOR DRAIN. UNDER FLOOR COLD WATER LINE TO BE PEX TYPE PIPING WITH NO JOINTS BELOW SLAB. REFER TO DETAIL B/PO.2 FOR TYPICAL INSTALLATION.
  - GRADE 4" WASTE LINE FROM GREASE INTERCEPTOR (SEE SHEET PO.5) AND 6" WASTE LINE AT 1/8" SLOPE PER FOOT. ALL OTHER WASTE LINES BELOW FLOOR TO BE GRADED AT 1/4" SLOPE PER FOOT.



ORIGINAL DRAWING SIGNED BY: DWAYNE C. SUDWEEKS  
DATE ORIGINAL SIGNED: Feb 08, 2019  
ORIGINAL ON FILE AT ENGINEERED SYSTEMS ASSOCIATES  
1355 EAST CENTER, POCAATELLO, IDAHO 83201

**Engineered Systems Associates**  
1355 EAST CENTER  
POCAATELLO, IDAHO 83201  
PHONE: (208) 233-0501  
FAX: (208) 233-0529  
EMAIL: esa@engsystems.com  
ESA JOB NUMBER: 18070

**nbw architects p.a.**  
ARCHITECTURE / PLANNING / INTERIORS  
SCOTT L. NELSON, A.I.A. KEVIN R. BODILY, A.I.A. JAMES H. WYATT, A.I.A.  
990 JOHN ADAMS PARKWAY P.O. BOX 2212 - IDAHO FALLS, IDAHO 83402-2212  
(208) 208-522-8779 (208) 208-522-8785 (208) 208-522-8785

NEW ELEMENTARY SCHOOL FOR  
**JEFFERSON COUNTY SCHOOL DISTRICT 251**  
ELEMENTARY SCHOOL  
RIGBY, IDAHO

PROJECT NO.  
**18012**  
DATE:  
**FEBRUARY 2019**  
DRAWN BY:  
**M JENSEN**  
CHECKED BY:  
**D SUDWEEKS**

REVISIONS	CONSTRUCTION SET

DRAWING NO.:  
**PO.4**

FOUNDATION LEVEL PLUMBING PLAN - PART 4