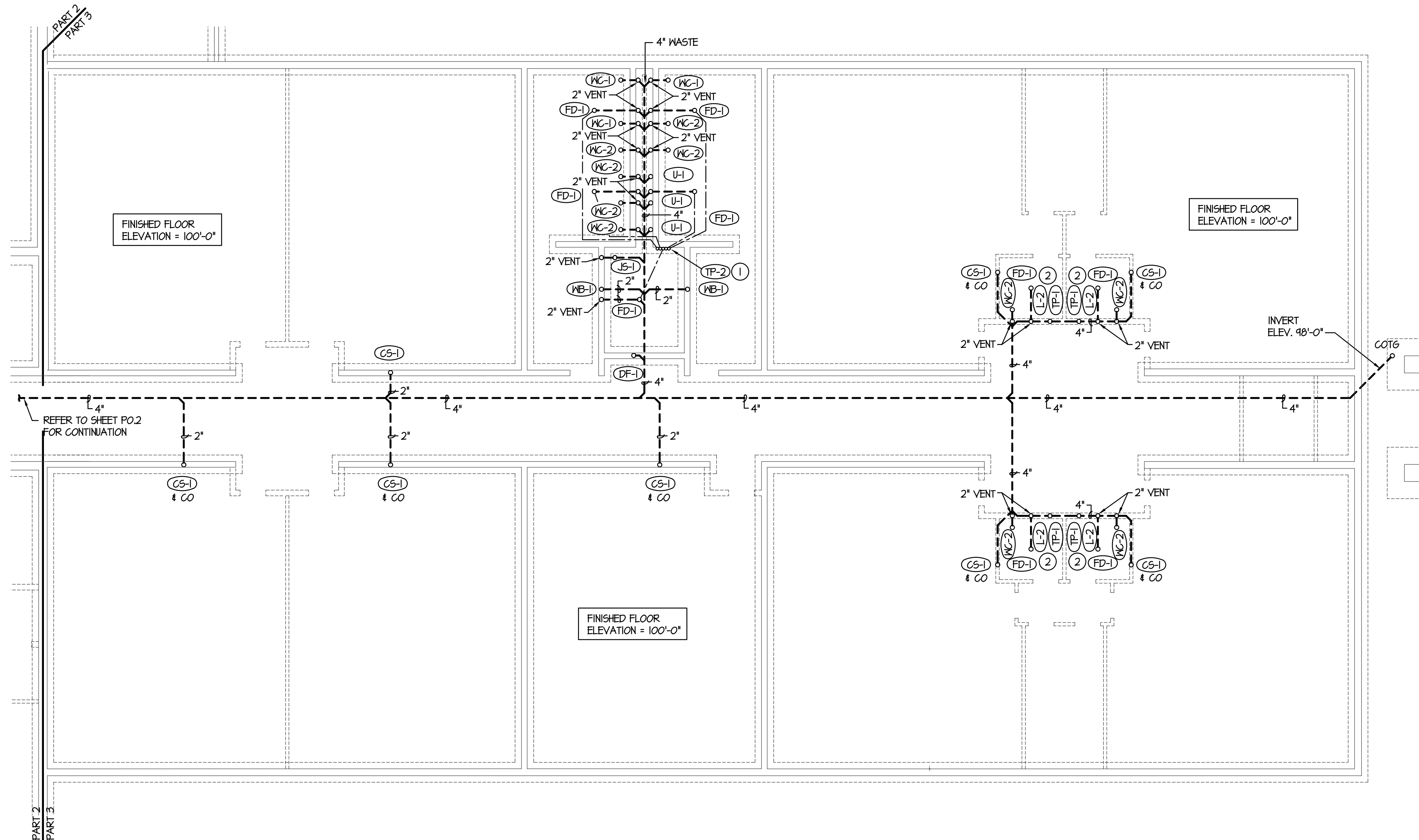


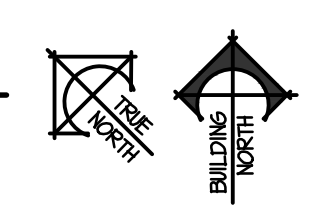
PLAN NOTES:

- TRAP PRIMER TO BE MOUNTED IN WALL ABOVE DROP SEPARATE 1/2" COLD WATER LINE DOWN THRU FLOOR FOR EACH FLOOR DRAIN OR FLOOR SINK. UNDER FLOOR COLD WATER LINE TO BE PEX TYPE PIPING WITH NO JOINTS BELOW SLAB. REFER TO DETAIL A/PO.2 FOR TYPICAL INSTALLATION.
- TRAP PRIMER TO BE MOUNTED IN WALL BELOW LAVATORY. DROP 1/2" COLD WATER LINE DOWN THRU FLOOR AND CONNECT TO FLOOR DRAIN. UNDER FLOOR COLD WATER LINE TO BE PEX TYPE PIPING WITH NO JOINTS BELOW SLAB. REFER TO DETAIL B/PO.2 FOR TYPICAL INSTALLATION.



FOUNDATION PLUMBING PLAN - PART 3

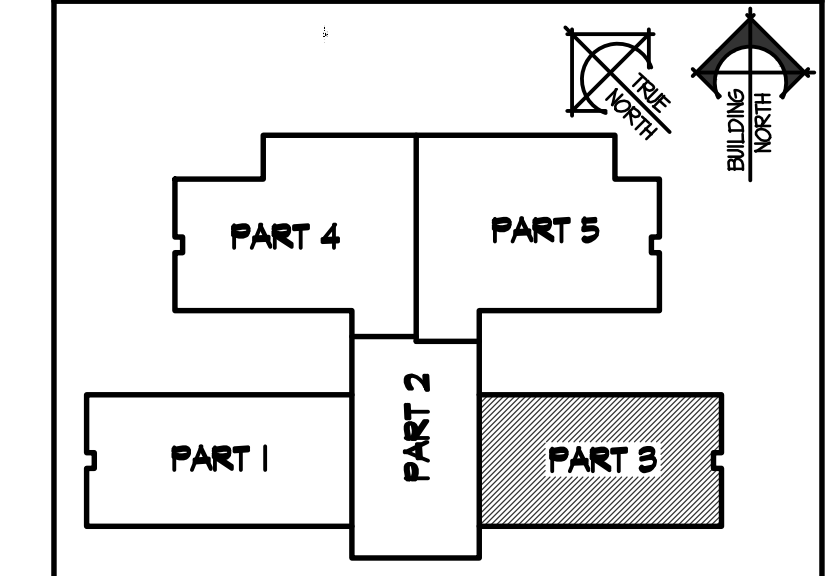
SCALE: 1/8" = 1'-0"



nbw architects p.a.
 ARCHITECTURE / PLANNING / INTERIORS
 SCOTT L. NELSON, A.I.A. KEVIN R. BODILY, A.I.A. JAMES H. WYATT, A.I.A.
 990 JOHN ADAMS PARKWAY P.O. BOX 2212 - IDAHO FALLS, IDAHO 83402-2212
 (208) 522-8779 (F) 208-522-8785 (W) nbwarchitects.com

PROJECT:
NEW ELEMENTARY SCHOOL FOR JEFFERSON COUNTY SCHOOL DISTRICT 251
 ELEMENTARY SCHOOL
 RIGBY, IDAHO
 FOUNDATION PLUMBING PLAN - PART 3
 SHEET TITLE:

KEY PLAN



REVISIONS
2-12-19 CONSTRUCTION SET

PROJECT NO. 18012
 DATE: FEBRUARY 2019
 DRAWN BY: M. JENSEN
 CHECKED BY: D. SUDWEEKS
 DRAWING NO.:

ORIGINAL DRAWING SIGNED BY: DWAYNE C. SUDWEEKS
 DATE ORIGINAL SIGNED: Feb 08, 2019
 ORIGINAL ON FILE AT ENGINEERED SYSTEMS ASSOCIATES
 1355 EAST CENTER, POCAATELLO, IDAHO 83201

PROFESSIONAL ENGINEER
 REGISTERED
 5762
 STATE OF IDAHO
 DWAYNE C. SUDWEEKS

Engineered Systems Associates
 1355 EAST CENTER
 POCAATELLO, IDAHO 83201
 PHONE: (208) 233-0501
 FAX: (208) 233-0529
 EMAIL: esa@engsystems.com
 ESA JOB NUMBER: 18070

PO.3

2/9/2019 9:24:30 AM F:\18\18070 Jefferson Co. Elem (Rigby)\18070-PO.3.dwg

A SERVICE SINK DETAIL NO SCALE **B INDIRECT DRAIN DETAIL** NO SCALE **C CONDENSATE DRAIN LINE CONNECTION DETAIL** NO SCALE

