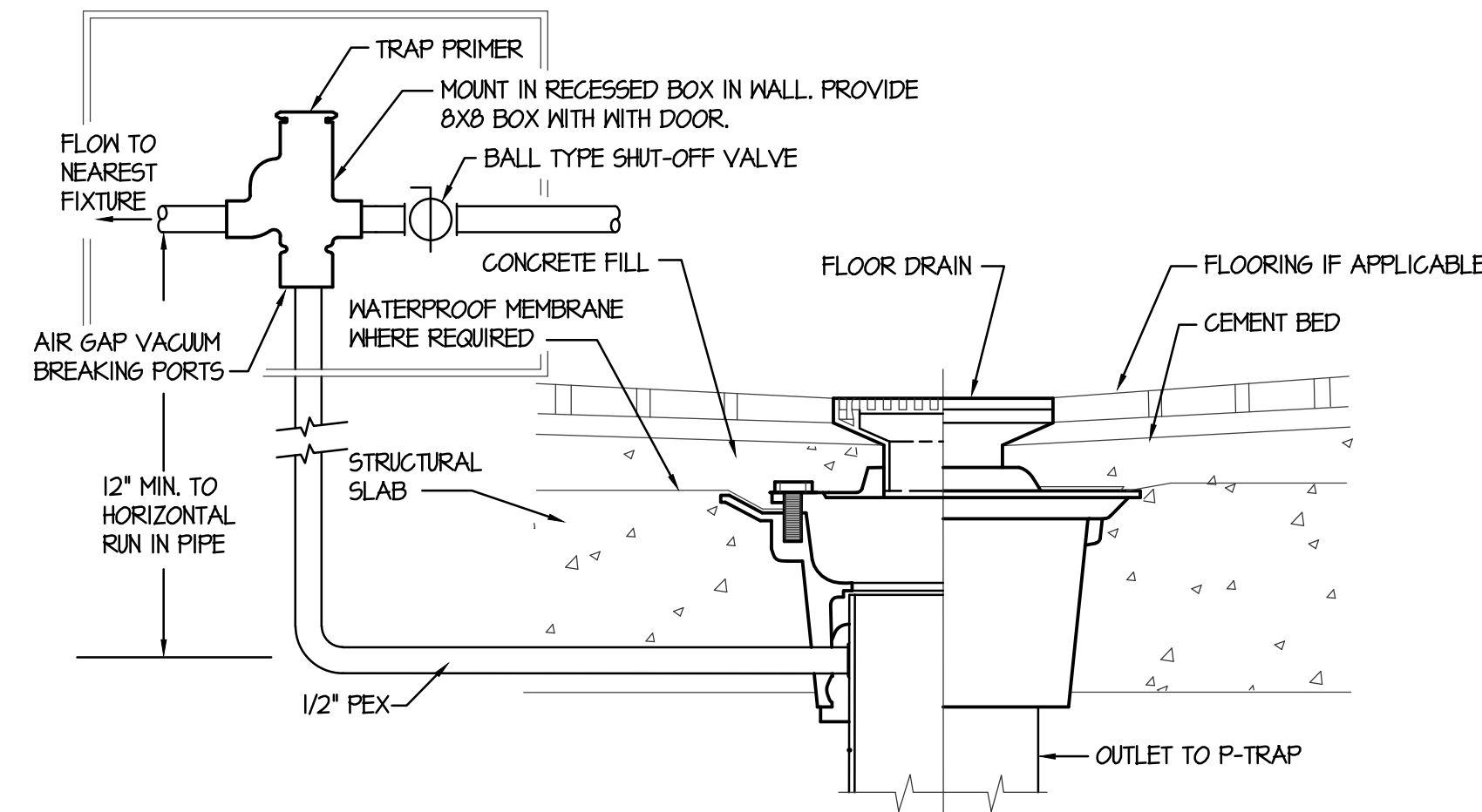


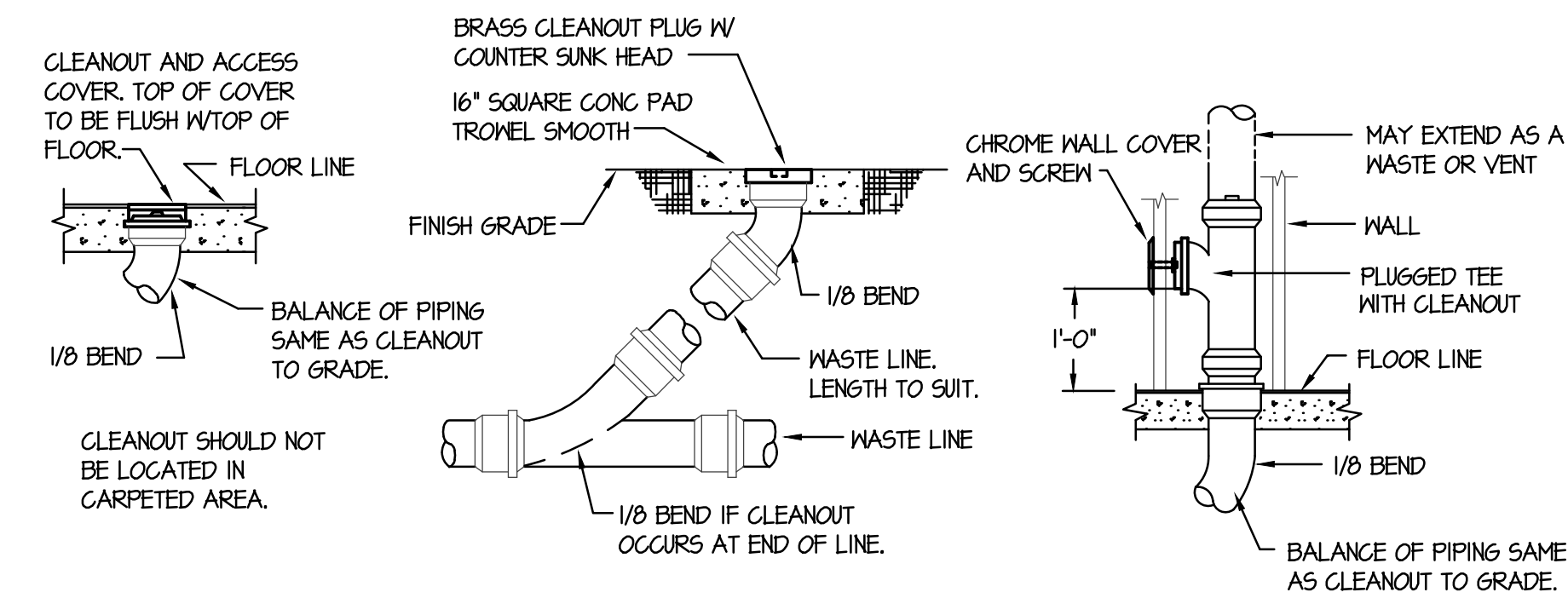
A MULTIPLE PORT TRAP PRIMER DETAIL (TP-2 & TP-3)

NO SCALE



B SINGLE DRAIN WITH TRAP PRIMER DETAIL (TP-1)

NO SCALE

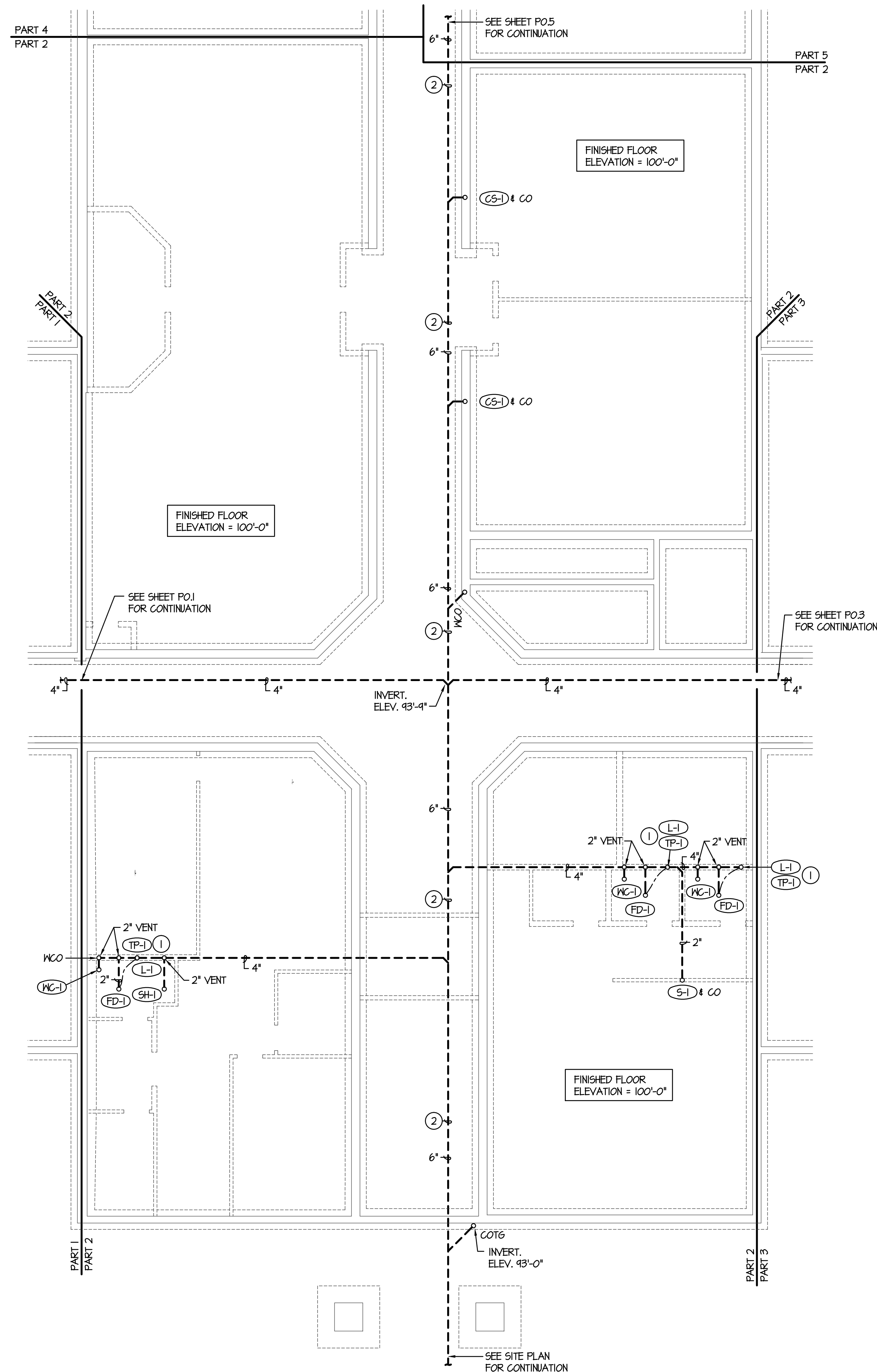


FLOOR CLEANOUT (FCO)

CLEANOUT TO GRADE (COTG)

WALL CLEANOUT (WCO)

NO SCALE



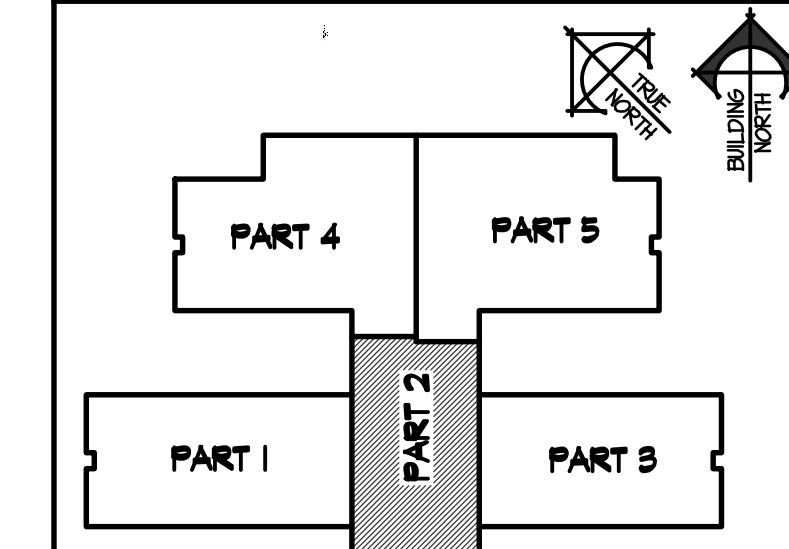
FOUNDATION PLUMBING PLAN - PART 2

SCALE: 1/8" = 1'-0"

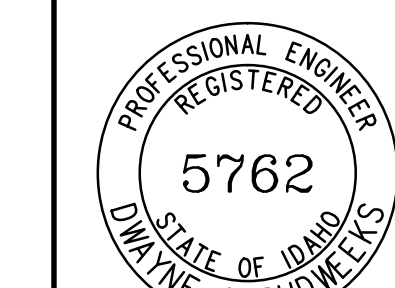
PLAN NOTES:

- TRAP PRIMER TO BE MOUNTED IN WALL BELOW LAVATORY. DROP 1/2" COLD WATER LINE DOWN THRU FLOOR FOR FLOOR DRAIN OR FLOOR SINK. UNDER FLOOR COLD WATER LINE TO BE PEX TYPE PIPING WITH NO JOINTS BELOW SLAB. REFER TO DETAIL B/P.O.2 FOR TYPICAL INSTALLATION.
- GRADE 6" MAIN WASTE LINE AT 1/8" SLOPE PER FOOT. ALL OTHER WASTE LINES SHOWN TO BE GRADED AT 1/4" SLOPE PER FOOT.

KEY PLAN



ORIGINAL DRAWING SIGNED BY: DWAYNE C. SUDWEEKS
 DATE ORIGINAL SIGNED: Feb 08, 2019
 ORIGINAL ON FILE AT ENGINEERED SYSTEMS ASSOCIATES
 1355 EAST CENTER, POCAATELLO, IDAHO 83201



Engineered Systems Associates
 1355 EAST CENTER
 POCAATELLO, IDAHO 83201
 PHONE: (208) 233-0501
 FAX: (208) 233-0529
 EMAIL: esa@engsystems.com
 ESA JOB NUMBER: 18070

nbw architects p.a.
 ARCHITECTURE / PLANNING / INTERIORS
 SCOTT L. NELSON, A.I.A. KEVIN R. BODILY, A.I.A. JAMES H. WYATT, A.I.A.
 990 JOHN ADAMS PARKWAY P.O. BOX 2212 - IDAHO FALLS, IDAHO 83402-2212
 (P) 208-522-8779 (F) 208-522-8785 (W) nbwarchitects.com

NEW ELEMENTARY SCHOOL FOR
JEFFERSON COUNTY SCHOOL DISTRICT 251
 ELEMENTARY SCHOOL
 RIGBY, IDAHO

FOUNDATION PLUMBING PLAN - PART 2

SHEET TITLE:

REVISIONS	DATE	DESCRIPTION
2-12-19		CONSTRUCTION SET

PROJECT NO. 18012
 DATE: FEBRUARY 2019
 DRAWN BY: M. JENSEN
 CHECKED BY: D. SUDWEEKS

DRAWING NO.:

PO.2