

PLAN NOTES:

- 1 3" DOMESTIC WATER SERVICE TO BUILDING. RISE UP INTO ROOM ABOVE AND CONNECT TO PRESSURE REDUCING STATION. REFER TO DETAIL B/PO.1 FOR PIPING CONNECTIONS.
- 2 6" FIRE SPRINKLER SERVICE LINE TO BUILDING. RISE UP INTO ROOM ABOVE AND CONNECT TO ALARM VALVE AND RISER. REFER TO DETAIL A/PO.1.
- 3 TRAP PRIMER TO BE MOUNTED IN WALL ABOVE. DROP SEPARATE 1/2" COLD WATER LINE DOWN THRU FLOOR FOR EACH FLOOR DRAIN OR FLOOR SINK. UNDER FLOOR COLD WATER LINE TO BE PEX TYPE PIPING WITH NO JOINTS BELOW SLAB. REFER TO DETAIL A/PO.2 FOR TYPICAL INSTALLATION.

nbw architects p.a.
 ARCHITECTURE / PLANNING / INTERIORS
 SCOTT L. NELSON, A.I.A. KEVIN R. BODILY, A.I.A. JAMES H. WYATT, A.I.A.
 990 JOHN ADAMS PARKWAY P.O. BOX 2212 - IDAHO FALLS, IDAHO 83402-2212
 (208) 208-522-8779 (F) 208-522-8785 (W) nbwarchitects.com

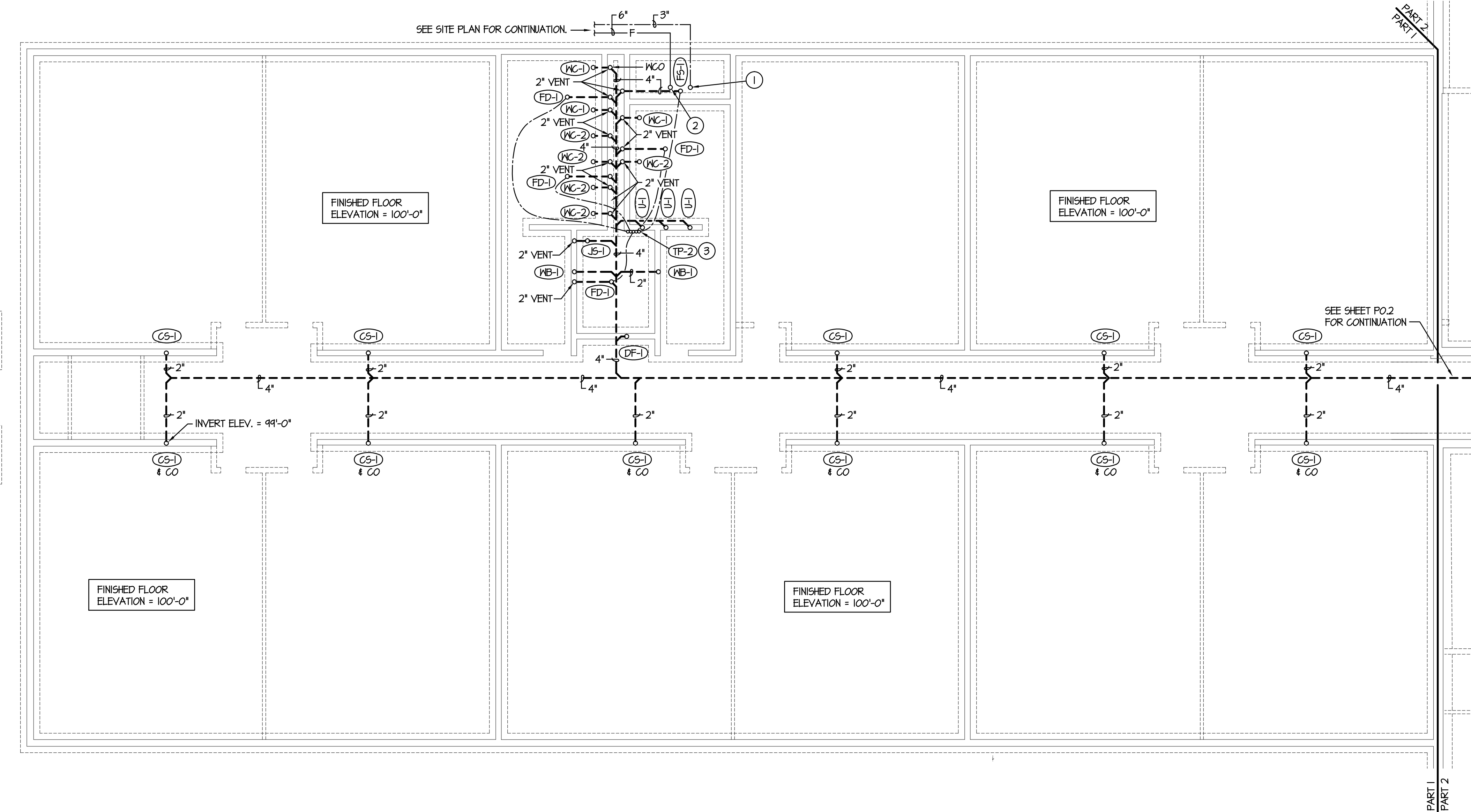
NEW ELEMENTARY SCHOOL FOR
JEFFERSON COUNTY SCHOOL DISTRICT 251
 ELEMENTARY SCHOOL
 RIGBY, IDAHO
 FOUNDATION PLUMBING PLAN - PART 1

PROJECT NO. 18012
 DATE: FEBRUARY 2019
 DRAWN BY: M. JENSEN
 CHECKED BY: D. SUDWEEKS

REVISIONS	DATE	DESCRIPTION
1	2-12-19	CONSTRUCTION SET

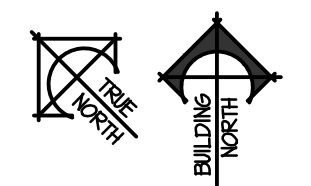
ORIGINAL DRAWING SIGNED BY: DWAYNE C. SUDWEEKS
 DATE ORIGINAL SIGNED: Feb 08, 2019
 ORIGINAL ON FILE AT ENGINEERED SYSTEMS ASSOCIATES
 1355 EAST CENTER, POCATELLO, IDAHO 83201

DRAWING NO.: **PO.1**
 PROJECT NO. 18012
 DATE: FEBRUARY 2019
 DRAWN BY: M. JENSEN
 CHECKED BY: D. SUDWEEKS

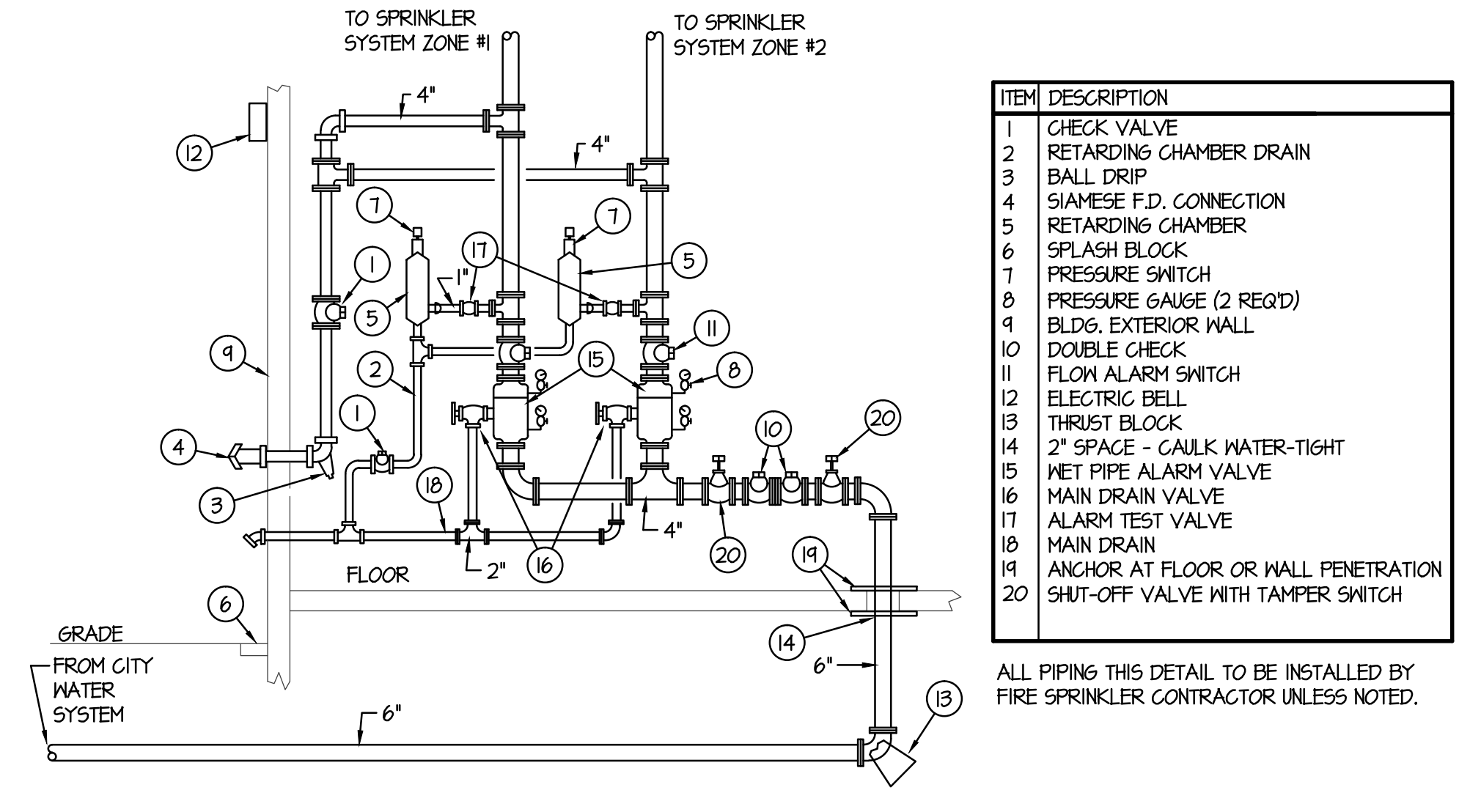


FOUNDATION PLUMBING PLAN - PART 1

SCALE: 1/8" = 1'-0"

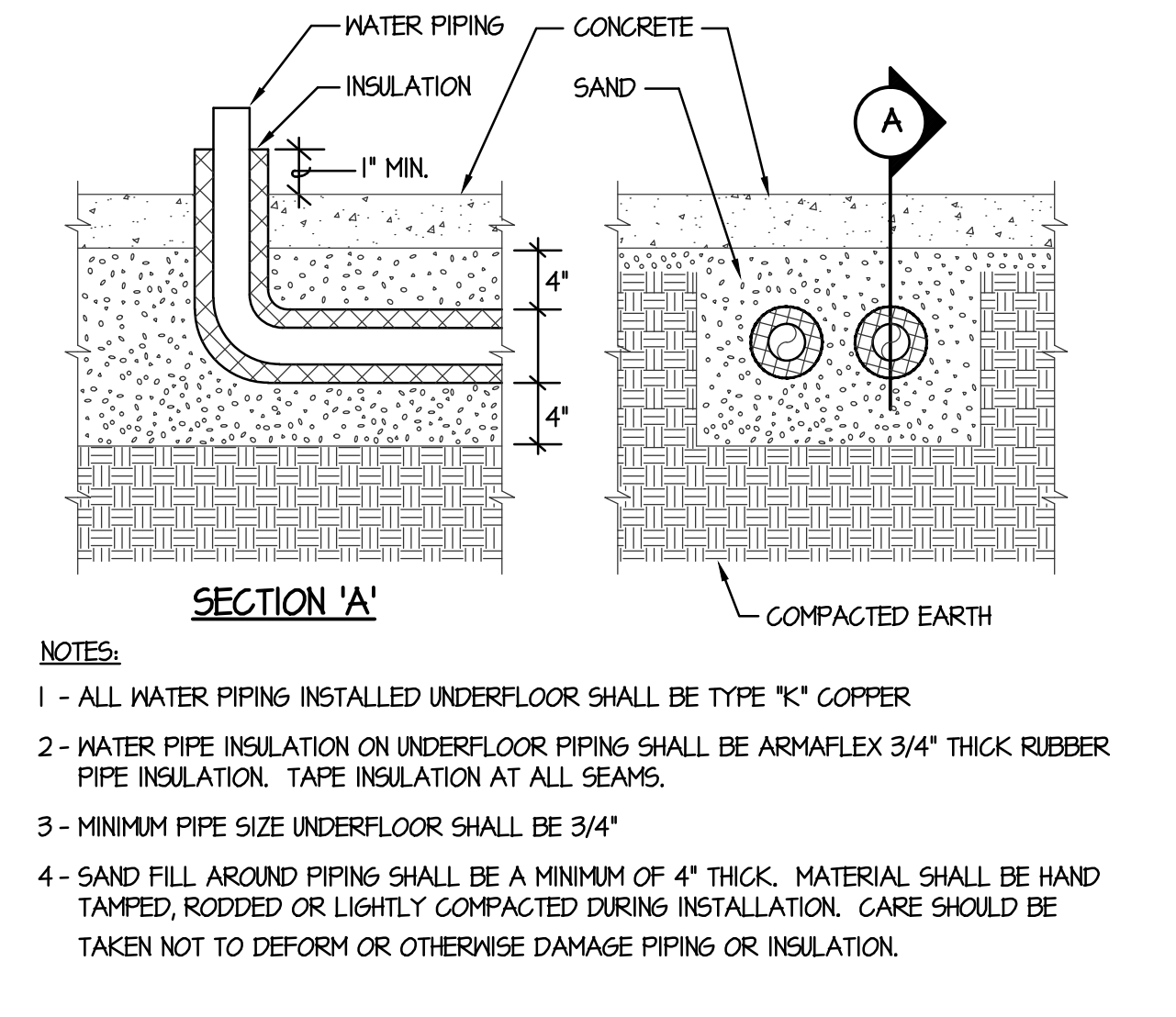
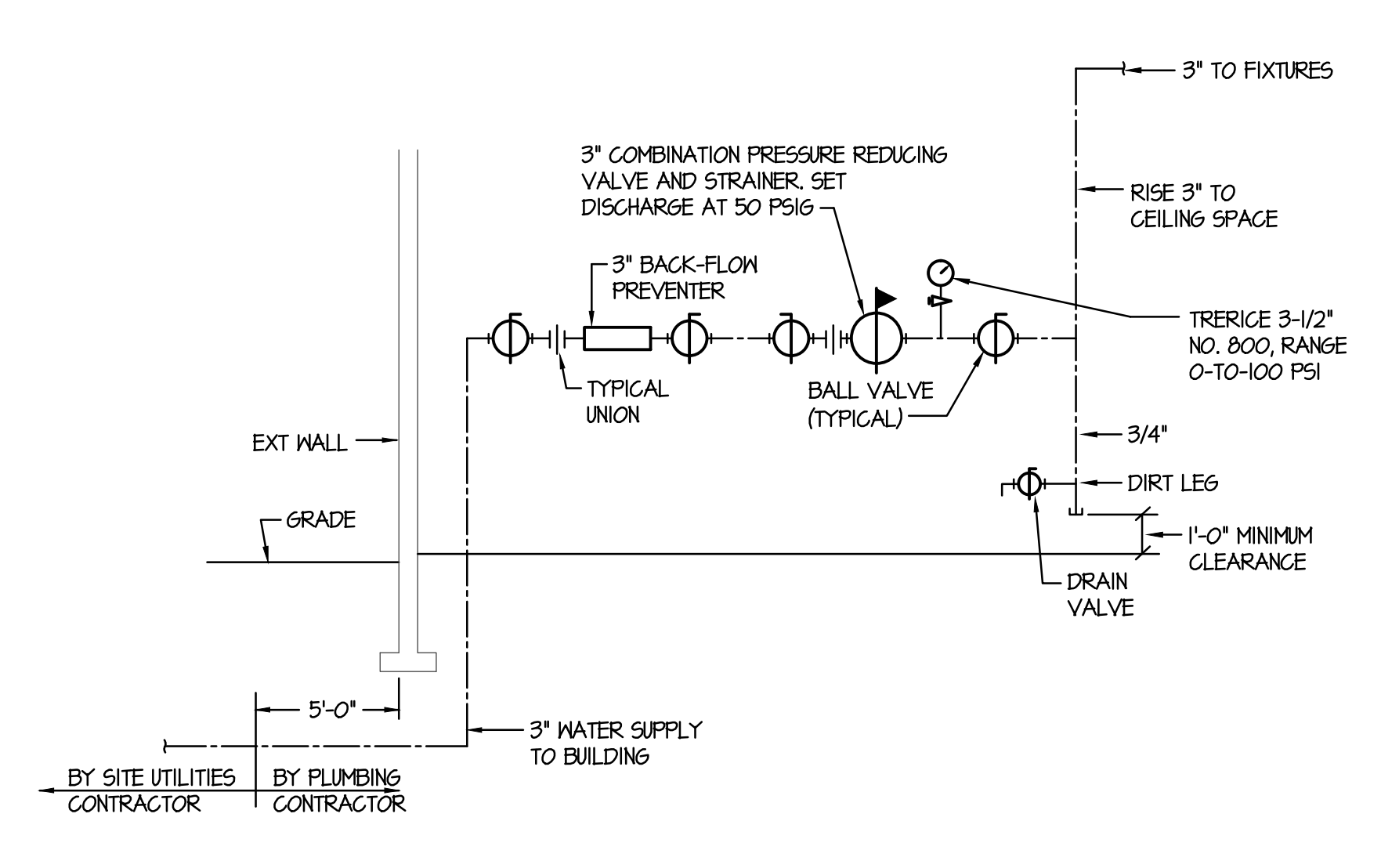


2/9/2019 9:25:40 AM F:\18\18070 Jefferson Co. Elem (Rigby)\18070-PO.1.dwg



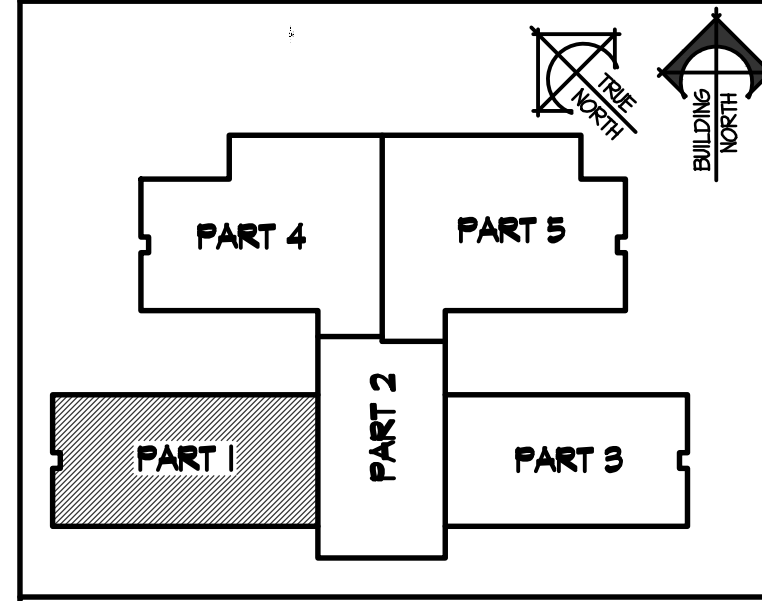
ITEM	DESCRIPTION
1	CHECK VALVE
2	RETARDING CHAMBER DRAIN
3	BALL DRIP
4	SIAMSESE F.D. CONNECTION
5	RETARDING CHAMBER
6	SPLASH BLOCK
7	PRESSURE SWITCH
8	PRESSURE GAUGE (2 REQ'D)
9	BLDG. EXTERIOR WALL
10	DOUBLE CHECK
11	FLOM ALARM SWITCH
12	ELECTRIC BELL
13	THRUST BLOCK
14	2" SPACE - CAULK WATER-TIGHT
15	NET PIPE ALARM VALVE
16	MAIN DRAIN VALVE
17	ALARM TEST VALVE
18	MAIN DRAIN
19	ANCHOR AT FLOOR OR WALL PENETRATION
20	SHUT-OFF VALVE WITH TAMPER SWITCH

ALL PIPING THIS DETAIL TO BE INSTALLED BY FIRE SPRINKLER CONTRACTOR UNLESS NOTED.

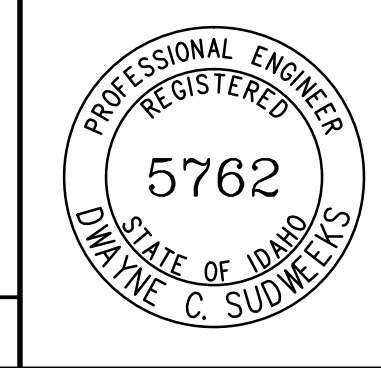


- NOTES:**
- 1 - ALL WATER PIPING INSTALLED UNDERFLOOR SHALL BE TYPE "K" COPPER
 - 2 - WATER PIPE INSULATION ON UNDERFLOOR PIPING SHALL BE ARMAFLEX 3/4" THICK RUBBER PIPE INSULATION. TAPE INSULATION AT ALL SEAMS.
 - 3 - MINIMUM PIPE SIZE UNDERFLOOR SHALL BE 3/4"
 - 4 - SAND FILL AROUND PIPING SHALL BE A MINIMUM OF 4" THICK. MATERIAL SHALL BE HAND TAMPED, RODDED OR LIGHTLY COMPACTED DURING INSTALLATION. CARE SHOULD BE TAKEN NOT TO DEFORM OR OTHERWISE DAMAGE PIPING OR INSULATION.

KEY PLAN



ORIGINAL DRAWING SIGNED BY: DWAYNE C. SUDWEEKS
 DATE ORIGINAL SIGNED: Feb 08, 2019
 ORIGINAL ON FILE AT ENGINEERED SYSTEMS ASSOCIATES
 1355 EAST CENTER, POCATELLO, IDAHO 83201



Engineered Systems Associates
 1355 EAST CENTER
 POCATELLO, IDAHO 83201
 PHONE: (208) 233-0501
 FAX: (208) 233-0529
 EMAIL: esa@engsystems.com
 ESA JOB NUMBER: 18070

A FIRE SPRINKLER RISER AND ALARM VALVE DETAIL NO SCALE

B WATER PRESSURE REDUCING STATION DETAIL NO SCALE

C UNDER SLAB PIPE INSULATION NO SCALE