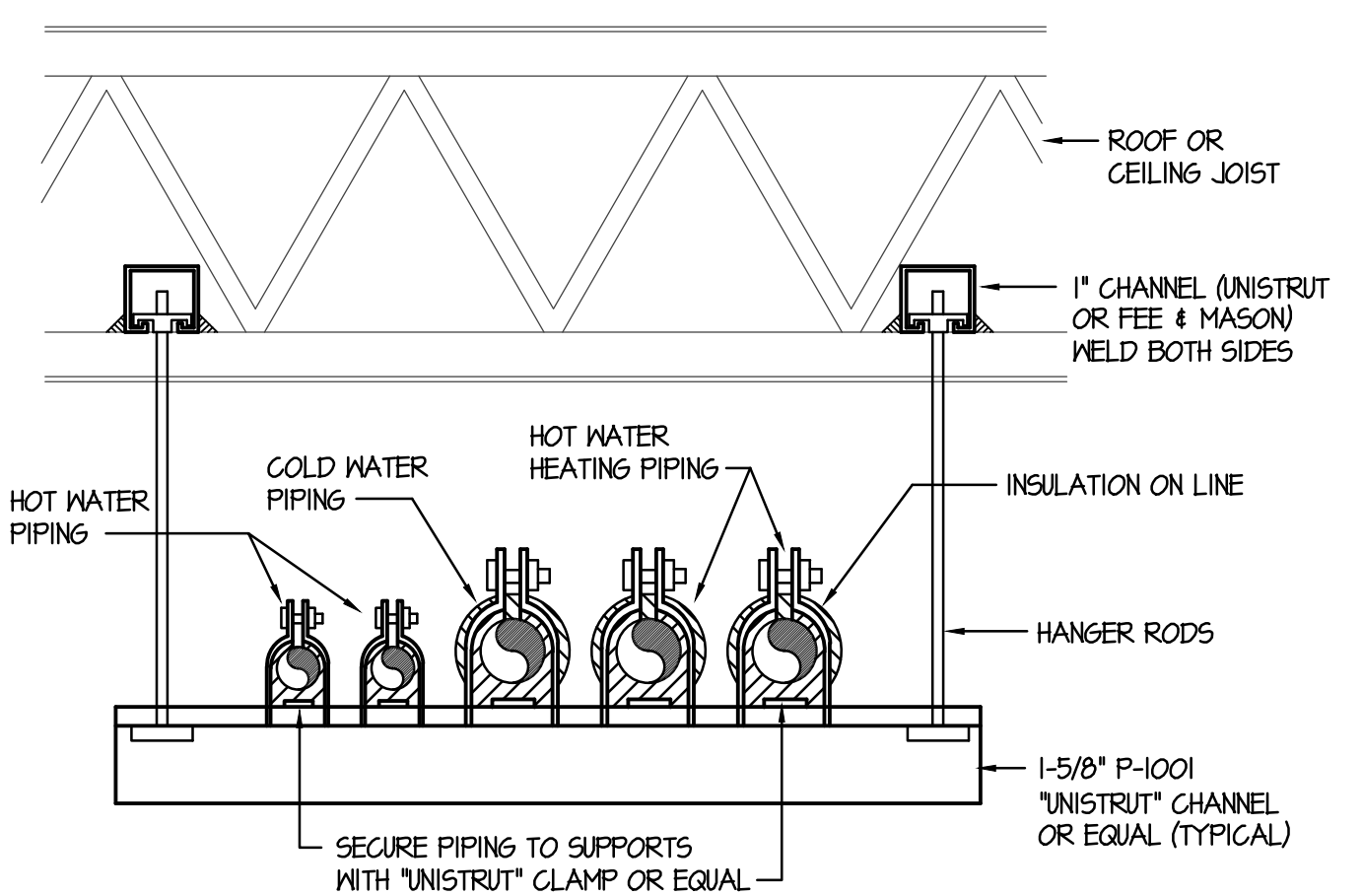


NOTE:
ALL PIPING SUPPORTS ARE TO BE INSTALLED PRIOR TO FIRE-PROOFING OF JOISTS. NO PIPING SUPPORTS ARE TO BE ATTACHED AFTER FIRE-PROOFING HAS BEEN DONE.

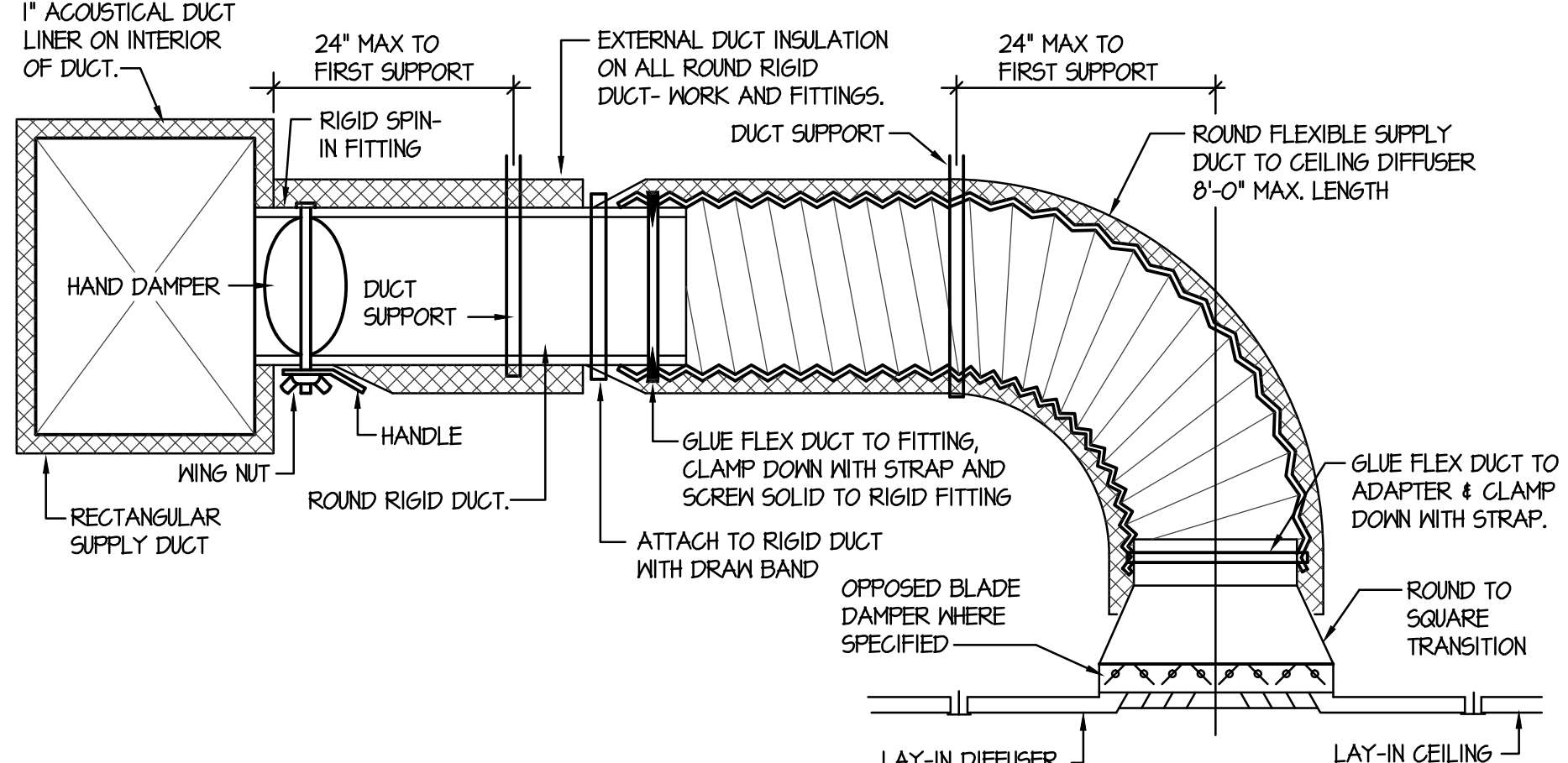
PIPE Ø	MAX. SPAN*
1"	7'-0"
1-1/2"	9'-0"
2"	10'-0"
2-1/2"	11'-0"
3"	12'-0"
4"	14'-0"
5"	16'-0"
6" OR LARGER	17'-0"

* MOUNT PIPE SUPPORTS AT MAXIMUM SPACING FOR THE SMALLEST PIPING INCLUDED IN SUPPORT RACK.



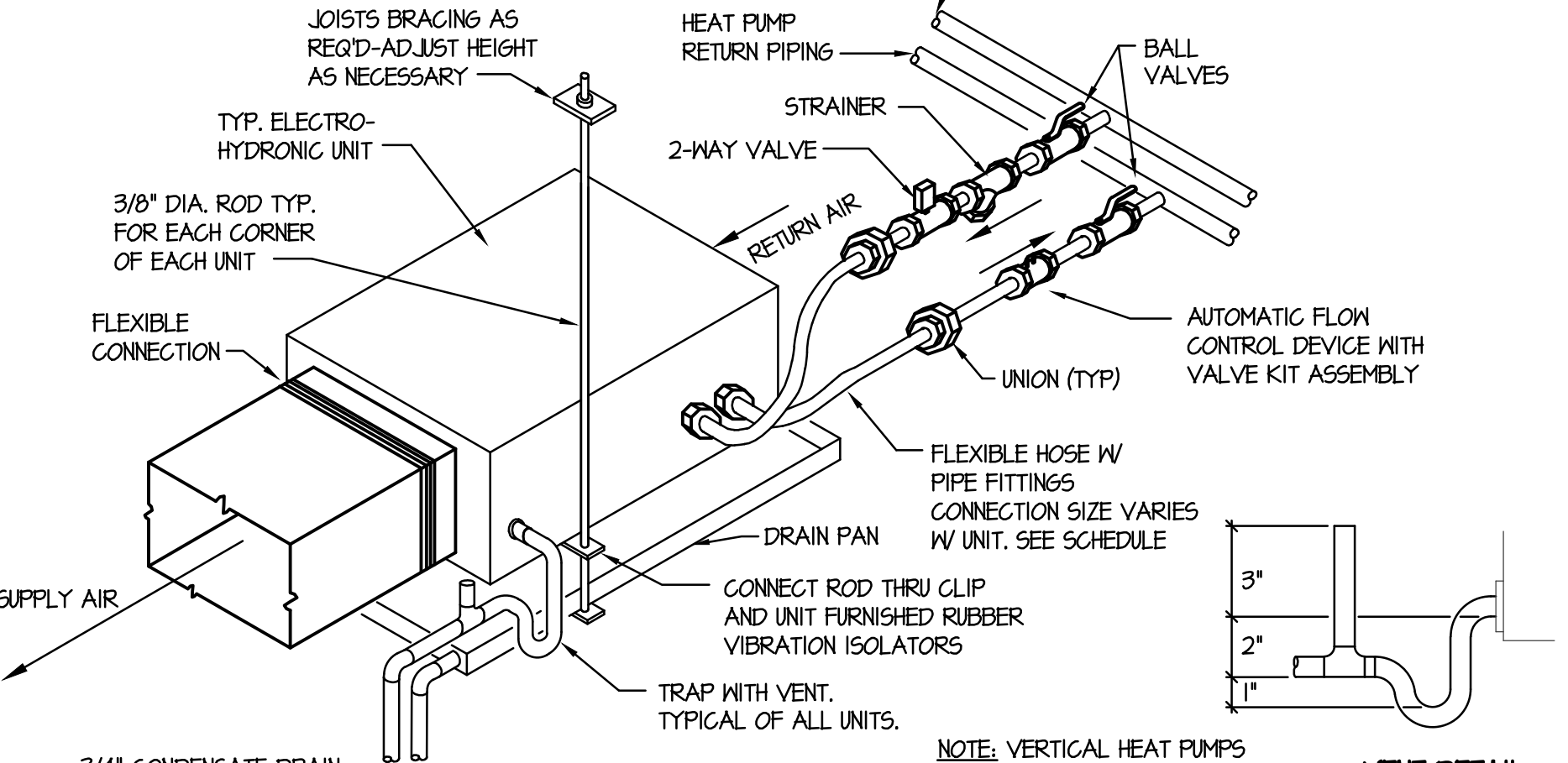
A PIPE SUPPORT DETAIL

NO SCALE



B CEILING DIFFUSER DETAIL FOR LAY-IN CEILINGS

NO SCALE



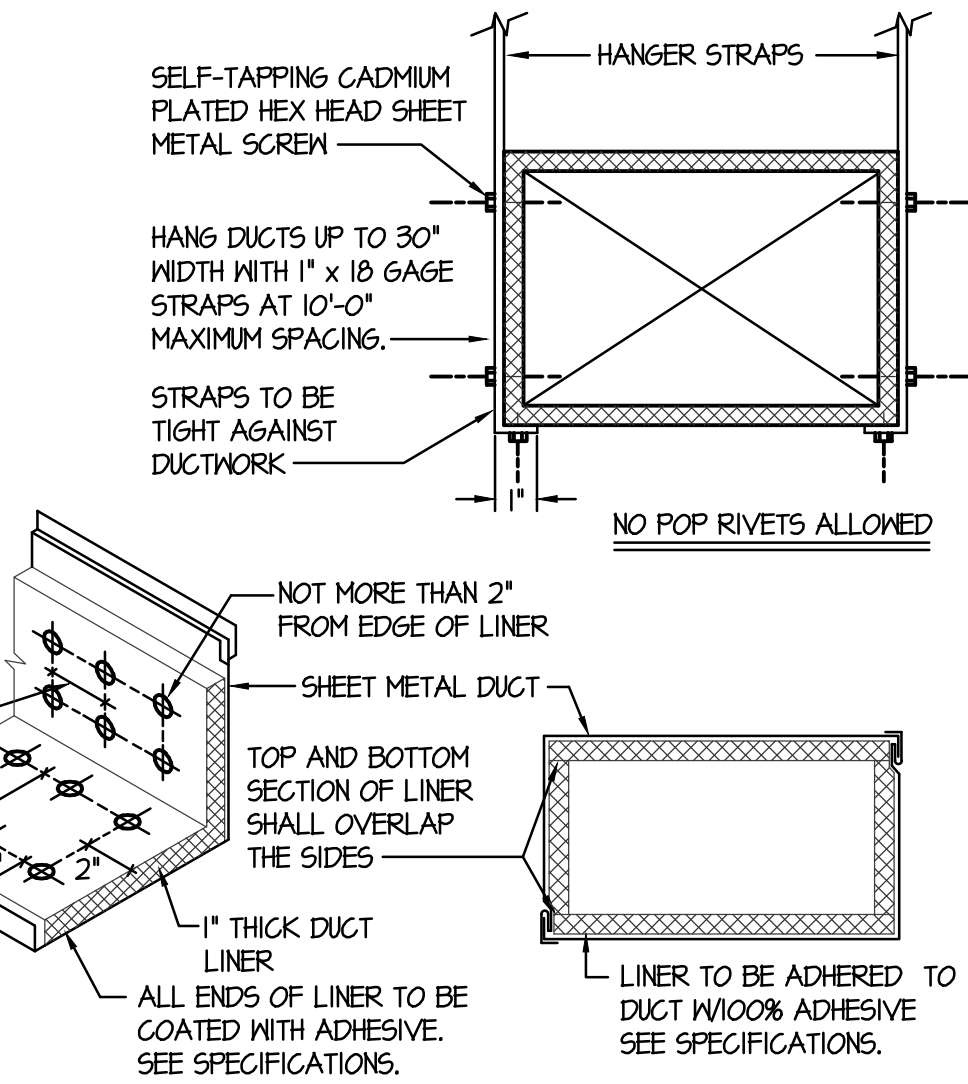
C HEAT PUMP PIPING AND SUPPORT DETAIL

NO SCALE

DIMENSION OF LONGEST SIDE, INCHES	SHEET METAL GAGE (ALL FOUR SIDES)	TRANSVERSE REINFORCING (1)	
		MINIMUM REINFORCING ANGLE SIZE AND MAXIMUM LONGITUDINAL SPACING BETWEEN TRANSVERSE JOINTS 1/4\"/>	
UP THRU 12	26	NONE REQUIRED	26
13 - 18	24	NONE REQUIRED	24
19 - 30	24	1"x1/8" @ 60 IN	24

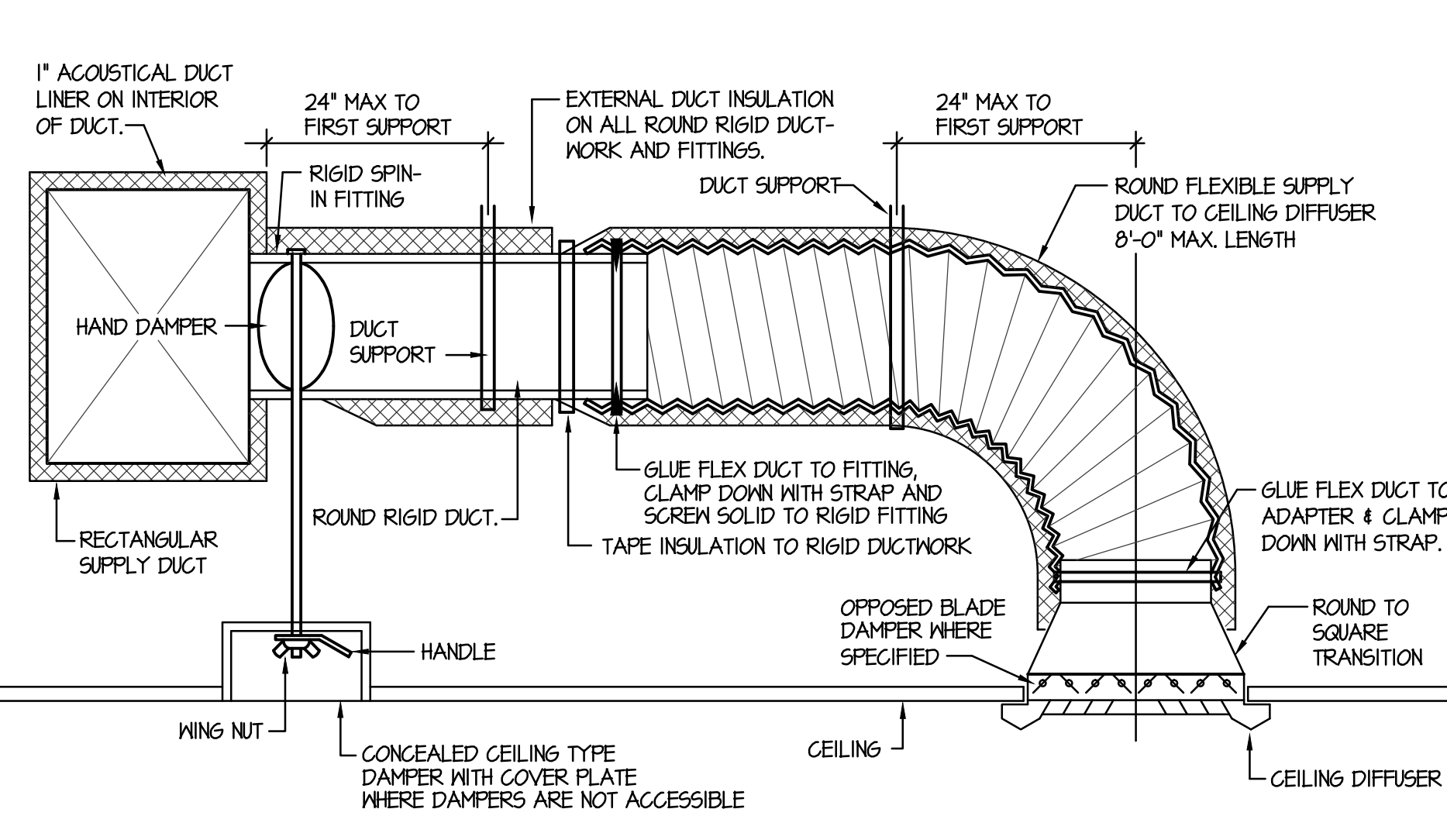
(1) TRANSVERSE REINFORCING SIZE IS DETERMINED BY DIMENSION OF SIDE TO WHICH ANGLE IS APPLIED.

METAL FASTENERS - O-RING INSULATING, DURO DYNE FASTENERS OR GRIPNAILS.
GRIP NAILS SHALL BE INSTALLED BY GRIPNAIL AIR HAMMER OR BY AUTOMATIC FASTENER EQUIP.



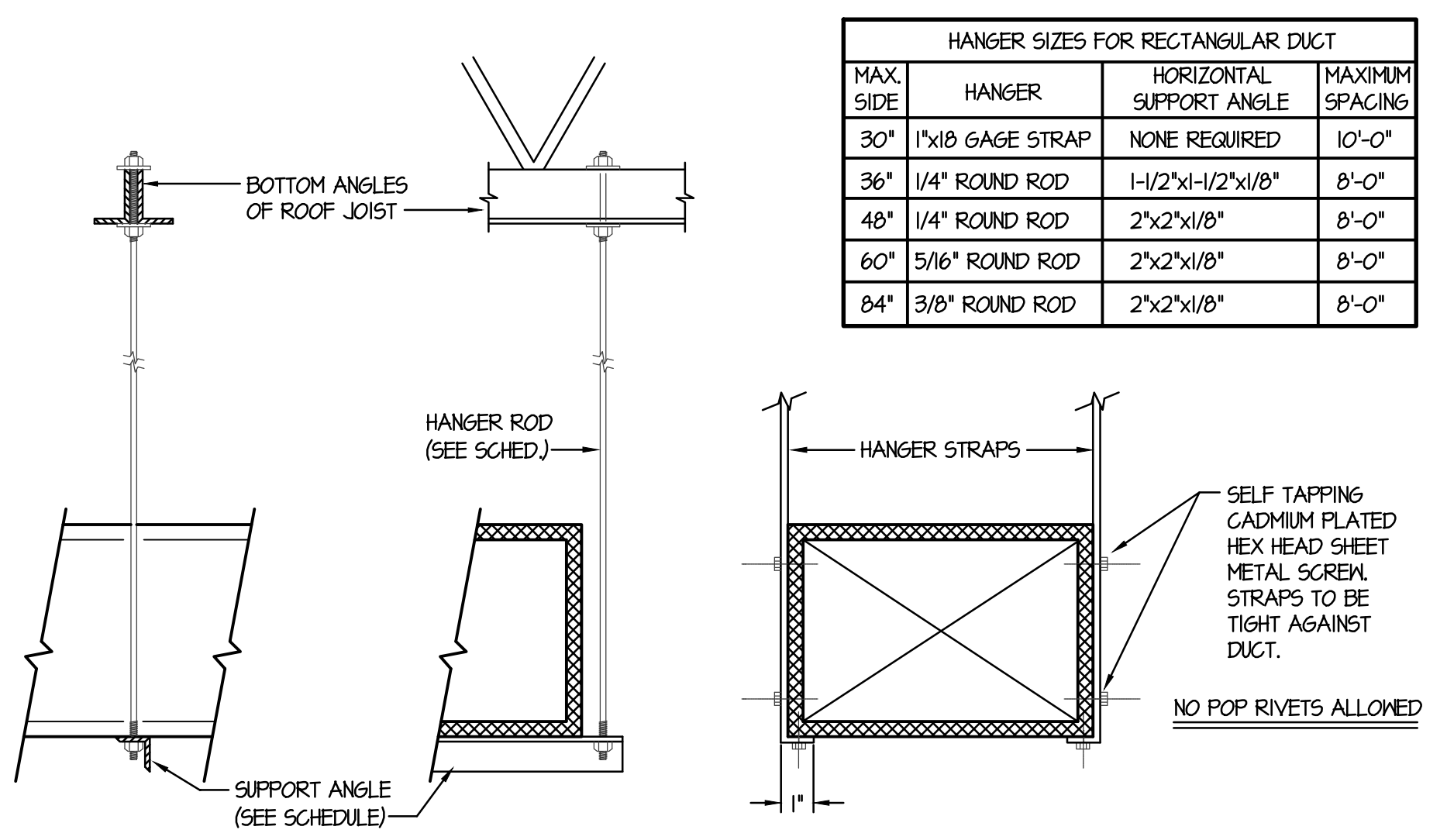
D DUCT CONSTRUCTION AND HANGER DETAIL

NO SCALE



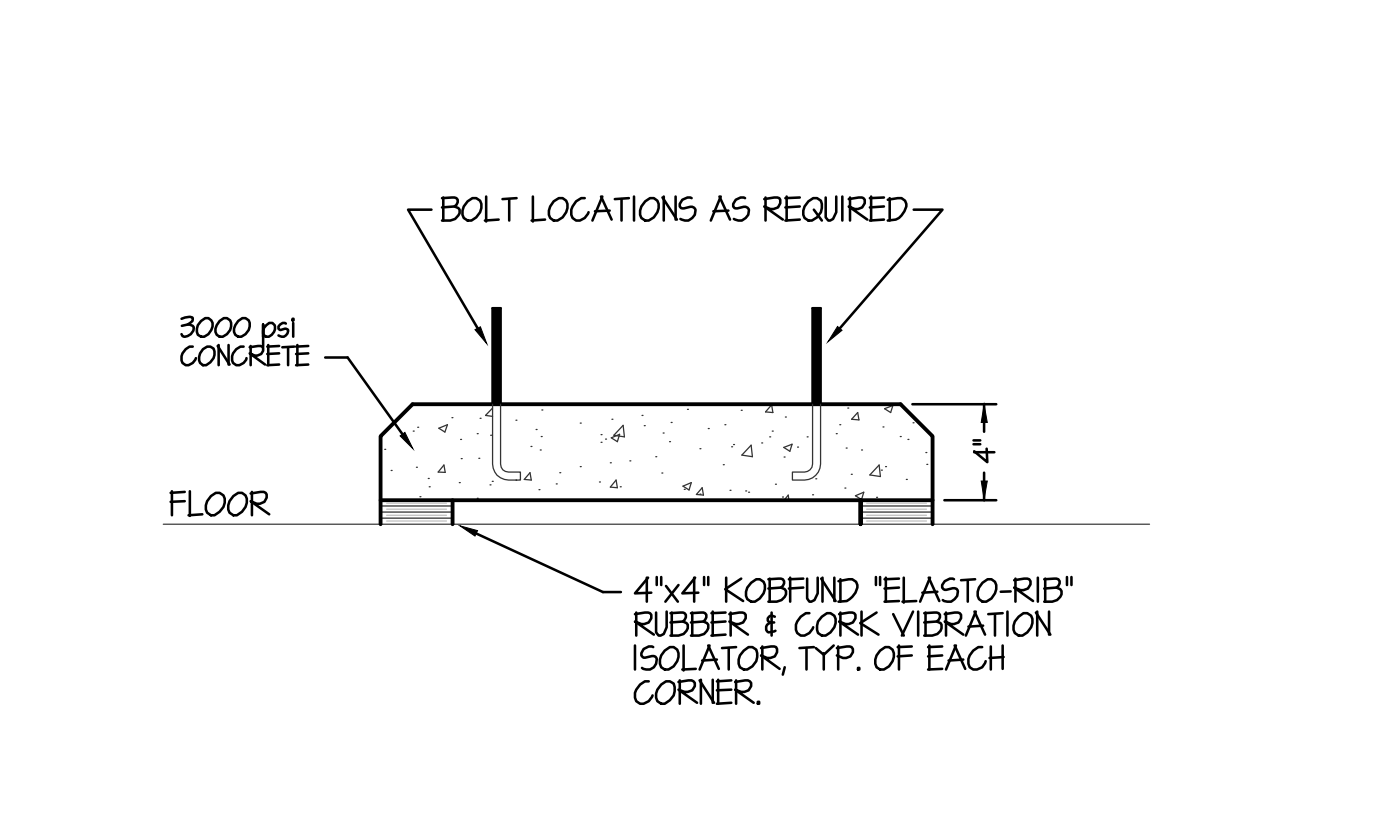
E CEILING DIFFUSER DETAIL FOR HARD CEILINGS

NO SCALE



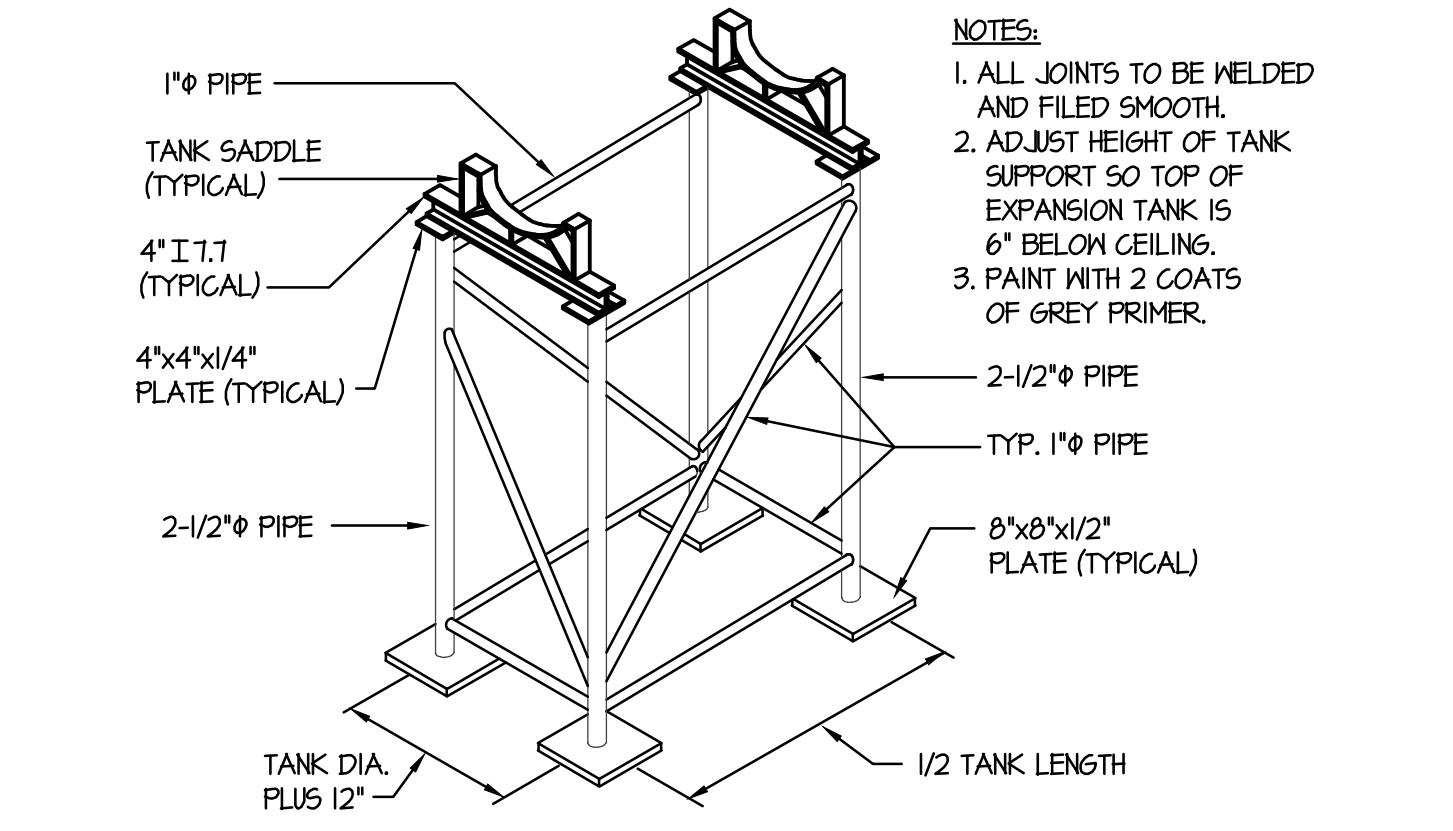
F DUCT STRAP HANGER DETAIL

NO SCALE



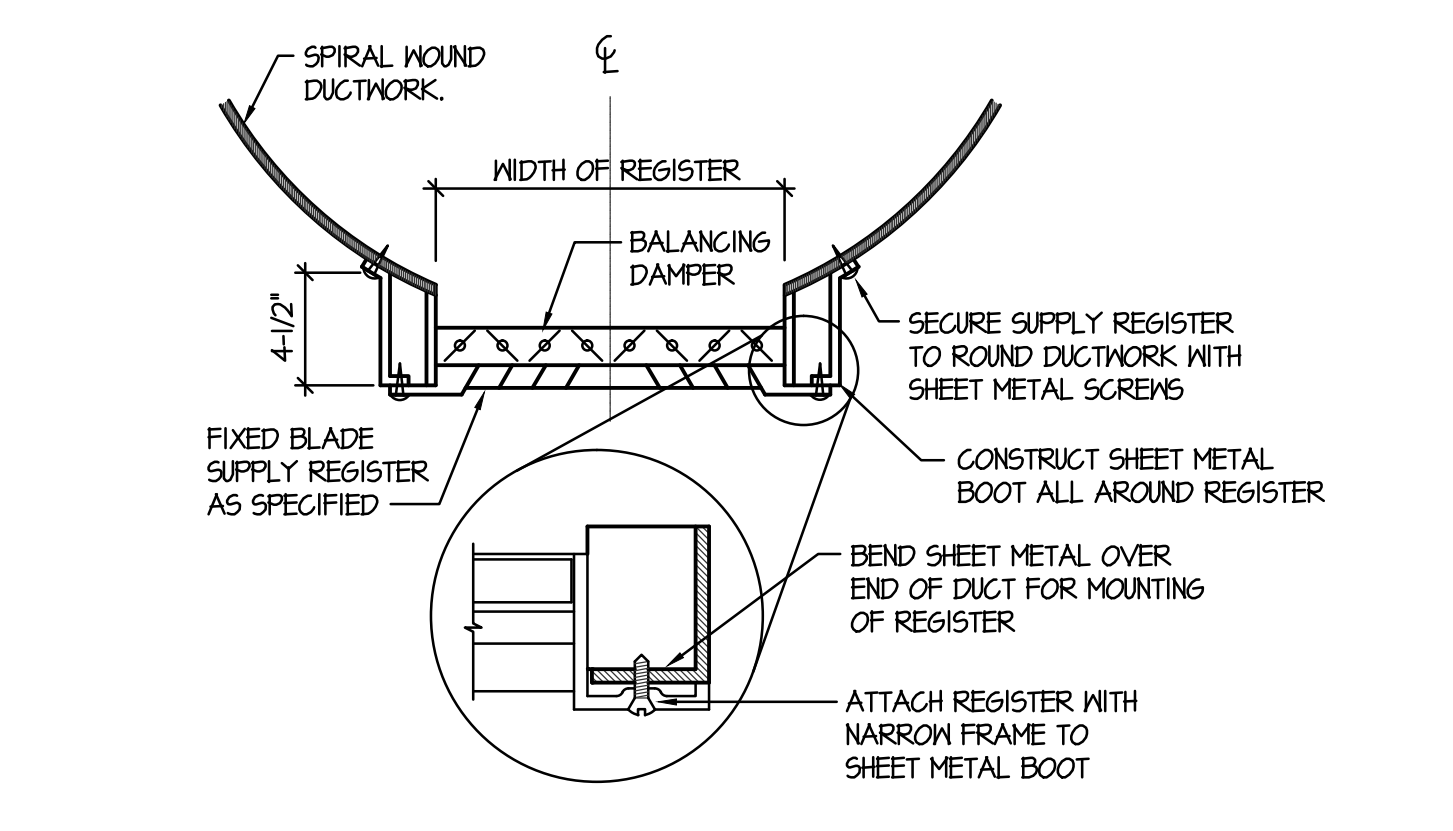
G PUMP BASE DETAIL

NO SCALE



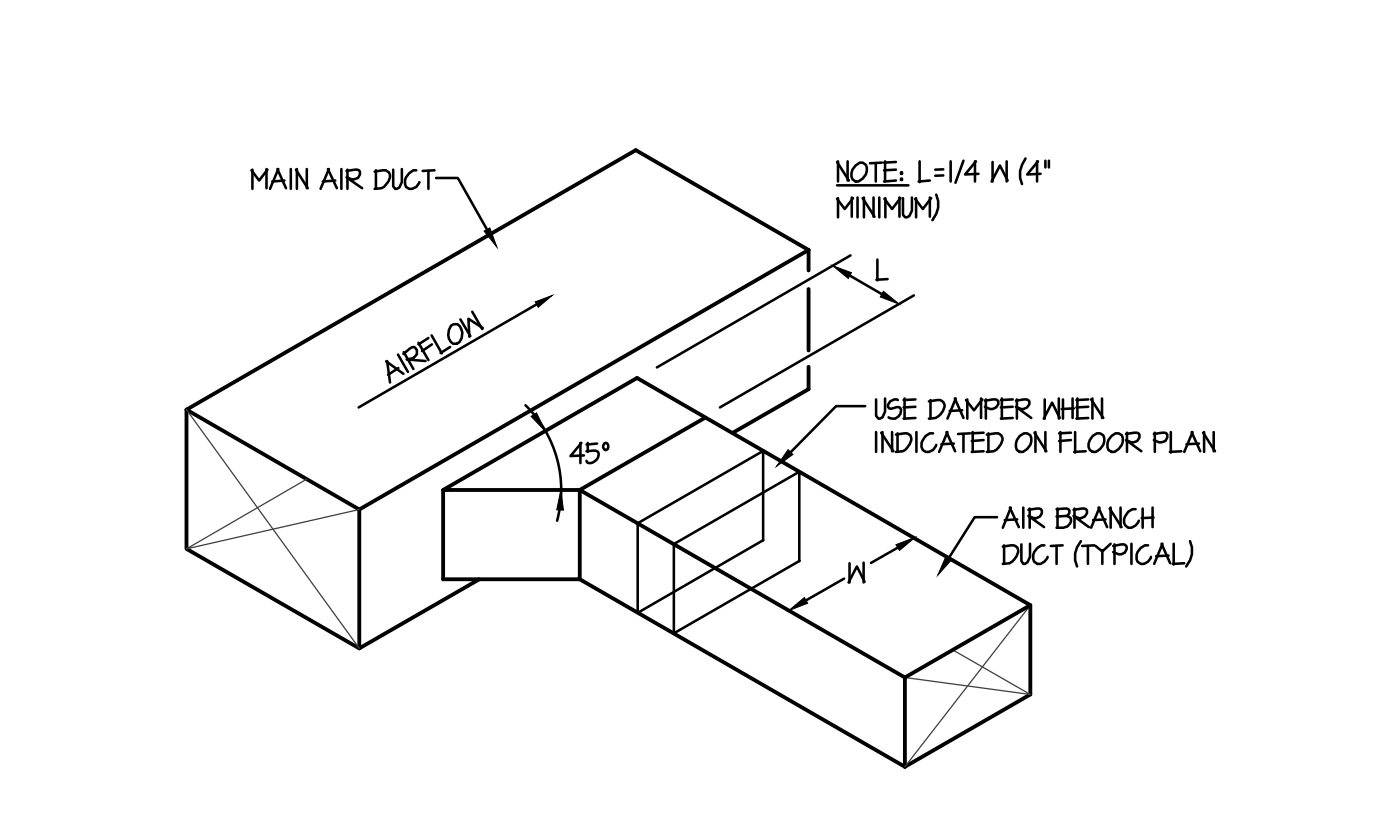
H TANK STAND DETAIL

NO SCALE



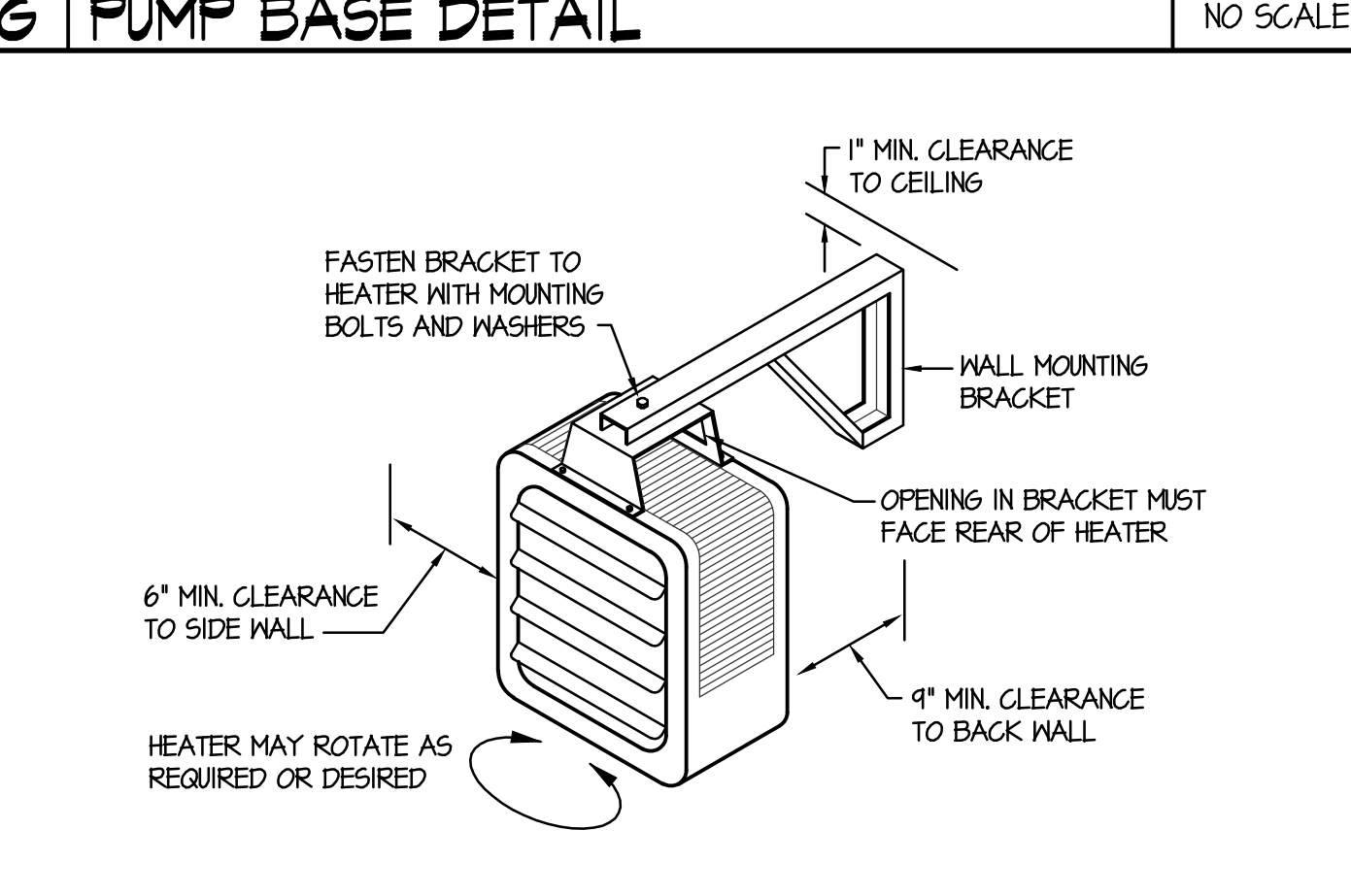
J GYM REGISTER INSTALLATION

NO SCALE



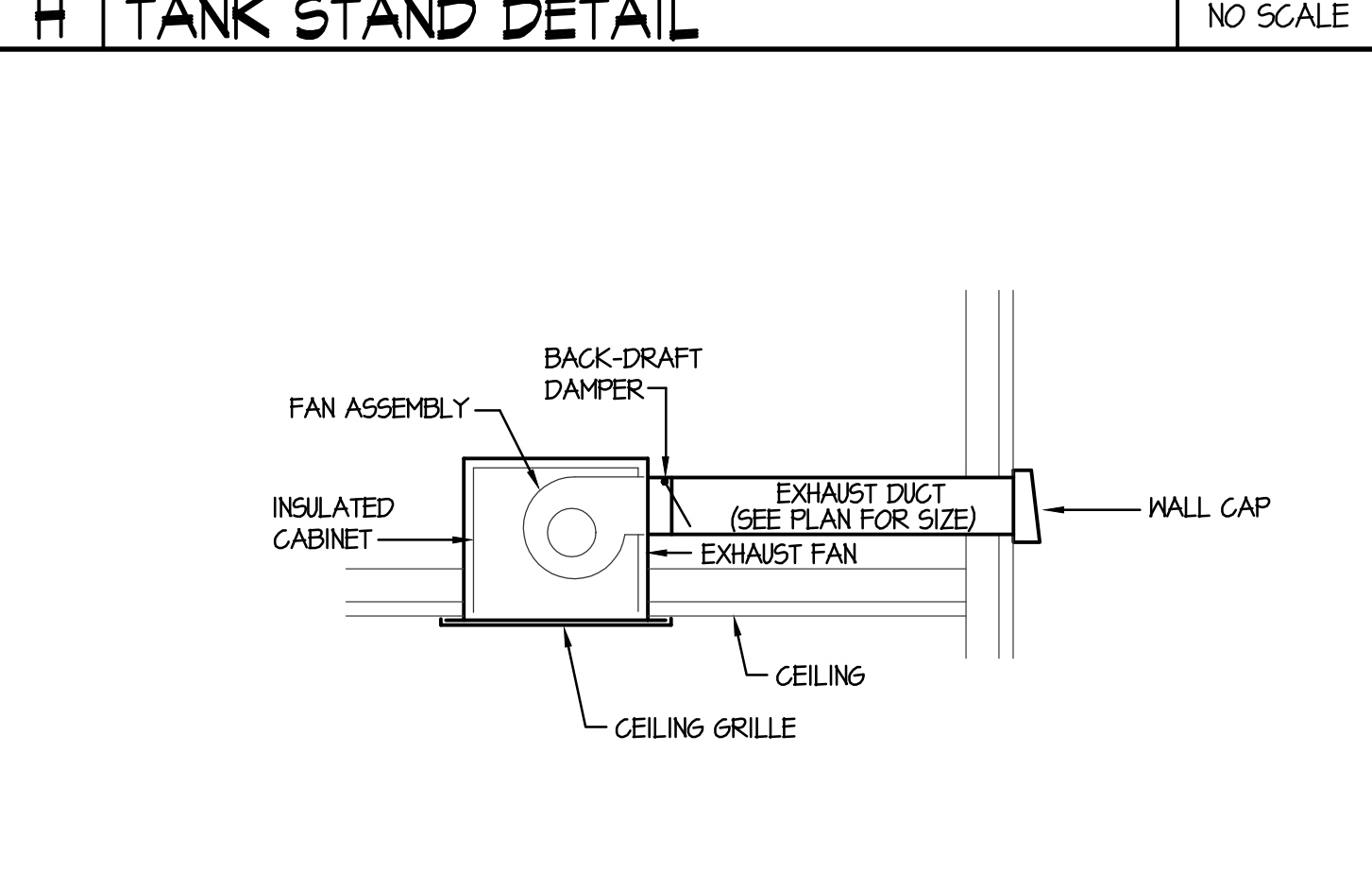
K RECT. DUCT CONNECTION DETAIL

NO SCALE



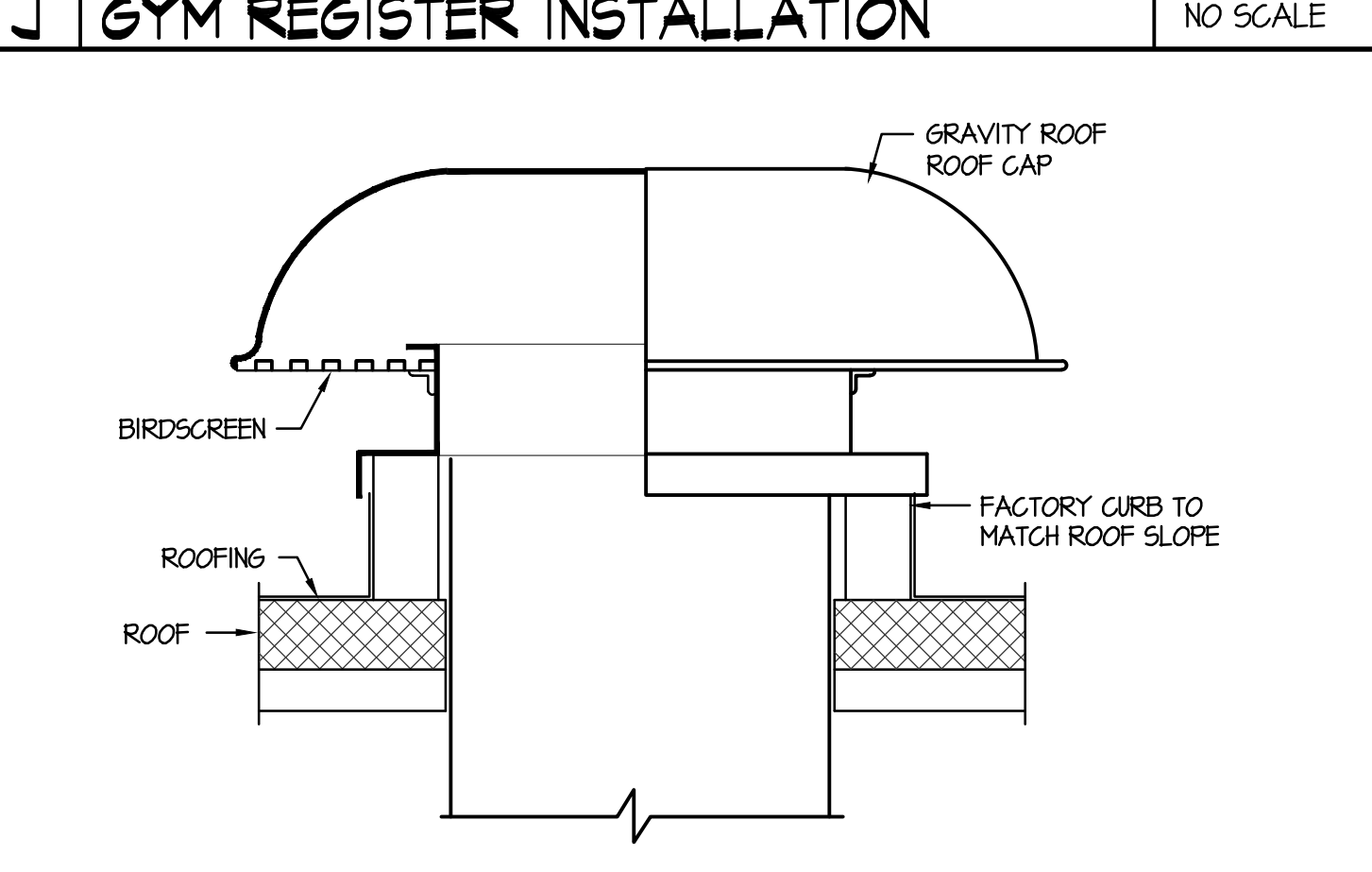
L ELECTRIC HEATER MOUNTING DETAIL

NO SCALE



M CEILING EXHAUST FAN DETAIL

NO SCALE



N ROOF CAP DETAIL

NO SCALE

nbw architects p.a.
ARCHITECTURE / PLANNING / INTERIORS
SCOTT L. NELSON, A.I.A. KEVIN R. BODILY, A.I.A. JAMES H. WYATT, A.I.A.
990 JOHN ROBINSON PARKWAY P.O. BOX 2212 - IDAHO FALLS, IDAHO 83402-2212
(P) 208-522-8779 (F) 208-522-8785 (O) idnowarchitects.com

NEW ELEMENTARY SCHOOL FOR
JEFFERSON COUNTY SCHOOL DISTRICT 251
ELEMENTARY SCHOOL
RIGBY, IDAHO
MECHANICAL DETAILS AND DIAGRAMS

PROJECT NO. 18012
DATE: FEBRUARY 2019
DRAWN BY: M JENSEN
CHECKED BY: D SUDWEEKS
DRAWING NO.:

REVISIONS	DATE	DESCRIPTION
2-12-19		CONSTRUCTION SET

ORIGINAL DRAWING SIGNED BY: DWAYNE C. SUDWEEKS
DATE ORIGINAL SIGNED: Feb 08, 2019
ORIGINAL ON FILE AT ENGINEERS SYSTEMS ASSOCIATES
1355 EAST CENTER, POCAATELLO, IDAHO 83201

Engineered Systems Associates
1355 EAST CENTER
POCAATELLO, IDAHO 83201
PHONE: (208) 233-0501
FAX: (208) 233-0529
EMAIL: esa@engsystems.com
ESA JOB NUMBER: 18070

M3.2

2/9/2019 9:35:06 AM F:\1818070 Jefferson Co. Elem (Rigby)\18070-M3.2.dwg