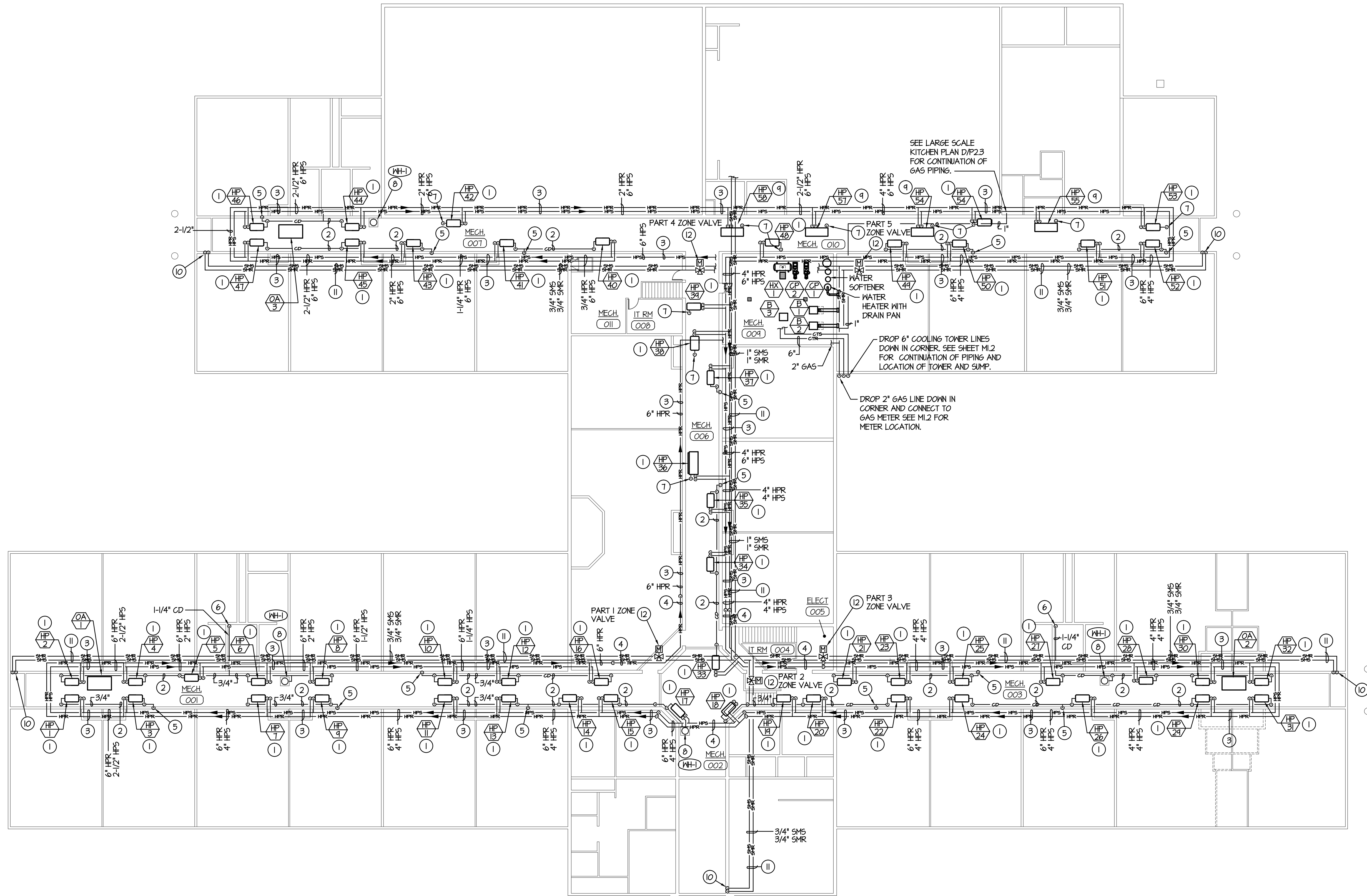
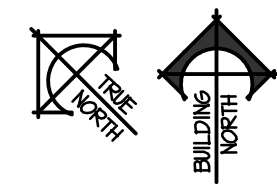


2/9/2019 9:35:26 AM F:\18\18070 Jefferson Co. Elem (Rigby)\18070-M1.8.dwg



MEZZANINE LEVEL HYDRONIC PIPING PLAN

SCALE: 1/16" = 1'-0"



PLAN NOTES:

- 1 HANG HEAT PUMPS FROM TRUSSES 36" ABOVE MECHANICAL CORRIDOR FLOOR. INSTALL DRIP PAN BELOW EACH UNIT. (TYPICAL) SEE DETAIL C/M3.2
- 2 ALL CONDENSATE DRAIN PIPING TO BE RUN AT FLOOR OF MEZZANINE LEVEL. GRADE PIPING DOWN AT 1/4" SLOPE PER FOOT OF LENGTH IN THE DIRECTION OF FLOW. COORDINATE PIPING LOCATION WITH EQUIPMENT AND OTHER PIPING.
- 3 ALL HEAT PUMP PIPING TO BE RUN IN MECHANICAL CORRIDOR ABOVE HEAT PUMP UNITS. REFER TO TYPICAL SECTION E/M2.3 FOR ACTUAL LOCATION OF PIPING. ALL PIPING SHOWN HERE IS LOCATED FOR CLARITY ONLY.
- 4 RISE PIPING UP TO 8'-0" ABOVE RAISED MEZZANINE FLOOR AND RUN OVER HEAD AS SHOWN OVER RAISED AREA.
- 5 DROP 3/4" CONDENSATE DRAIN LINE DOWN IN WALL AND EXTEND OUT BELOW CABINET. CONNECT COND. DRAIN LINE TO SINK SIDE OF P-TRAP WITH DISHWASHER TYPE CONNECTION. REFER TO DETAIL C/P0.3 FOR CONNECTION TO SINK.
- 6 DROP 1-1/4" CONDENSATE DRAIN LINE DOWN IN WALL AND EXTEND TO SERVICE SINK. REFER TO DETAIL B/P0.3 FOR TERMINATION OF PIPING AT SINK.
- 7 DROP 3/4" CONDENSATE DRAIN LINE DOWN THRU MEZZANINE FLOOR AND RUN IN CEILING SPACE BELOW. REFER TO PLUMBING FLOOR PLANS FOR CONTINUATION OF PIPING.
- 8 WATER HEATER WITH SHEET METAL DRAIN PAN. INSTALL ON FLOOR OF MEZZANINE AND PIPE DRAIN LINE WITH OTHER CONDENSATE DRAIN PIPING. REFER TO DETAIL B/M1.3 FOR PIPING CONNECTIONS.
- 9 MOUNT VERTICAL HEAT PUMP UNITS ON FLOOR OF MEZZANINE WITH VIBRATION ISOLATORS AT EACH CORNER. PROVIDE SHEET METAL DRIP PAN BELOW UNIT AND CONDENSATE ALARM TO SHUT-DOWN UNIT IN THE EVENT OF CONDENSATE OVERFLOW.
- 10 DROP 3/4" SNOW MELT SUPPLY AND RETURN PIPING DOWN IN WALL TO SNOW MELT SYSTEM AT ENTRY. REFER TO MAIN LEVEL FLOOR PLANS (SHEETS M1.1, M1.2, M1.3, M1.4 & M1.5) FOR CONTINUATION OF PIPING AND LOCATION OF SNOW MELT AREAS.
- 11 RUN SNOW MELT SYSTEM PIPING IN MECHANICAL CORRIDOR ABOVE HEAT PUMP UNIT ALONG WITH HYDRONIC PIPING.
- 12 PROVIDE MOTORIZED ZONE VALVE IN RETURN PIPING OF SNOW MELT SYSTEM. TIE VALVE INTO CORRESPONDING SENSORS, PUMP AND BOILER ASSOCIATED WITH SNOW MELT SYSTEM. REFER TO DETAIL D/M2.2 FOR TYPICAL PIPING CONNECTIONS.

nbw architects p.a.
 ARCHITECTURE / PLANNING / INTERIORS
 SCOTT L. NELSON, A.I.A. KEVIN R. BODILY, A.I.A. JAMES H. WYATT, A.I.A.
 990 JOHN ADAMS PARKWAY P.O. BOX 2212 - IDAHO FALLS, IDAHO 83402-2212
 (P) 208-522-8779 (F) 208-522-8785 (W) nbwarchitects.com

NEW ELEMENTARY SCHOOL FOR
JEFFERSON COUNTY SCHOOL DISTRICT 251
 ELEMENTARY SCHOOL
 RIGBY, IDAHO

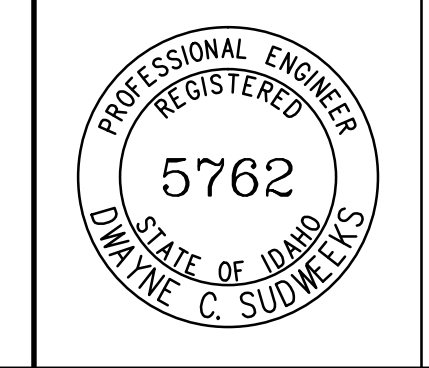
MEZZANINE LEVEL HYDRONIC PIPING PLAN

REVISIONS

NO.	DATE	DESCRIPTION
1	2-12-19	CONSTRUCTION SET

PROJECT NO.
18012
 DATE:
FEBRUARY 2019
 DRAWN BY:
M. JENSEN
 CHECKED BY:
D. SUDWEEKS

ORIGINAL DRAWING SIGNED BY: DWAYNE C. SUDWEEKS
 DATE ORIGINAL SIGNED: Feb 08, 2019
 ORIGINAL ON FILE AT ENGINEERED SYSTEMS ASSOCIATES
 1355 EAST CENTER, POCATELLO, IDAHO 83201



Engineered Systems Associates
 1355 EAST CENTER
 POCATELLO, IDAHO 83201
 PHONE: (208) 233-0501
 FAX: (208) 233-0529
 EMAIL: esa@engsystems.com
 ESA JOB NUMBER: 18070

M1.8