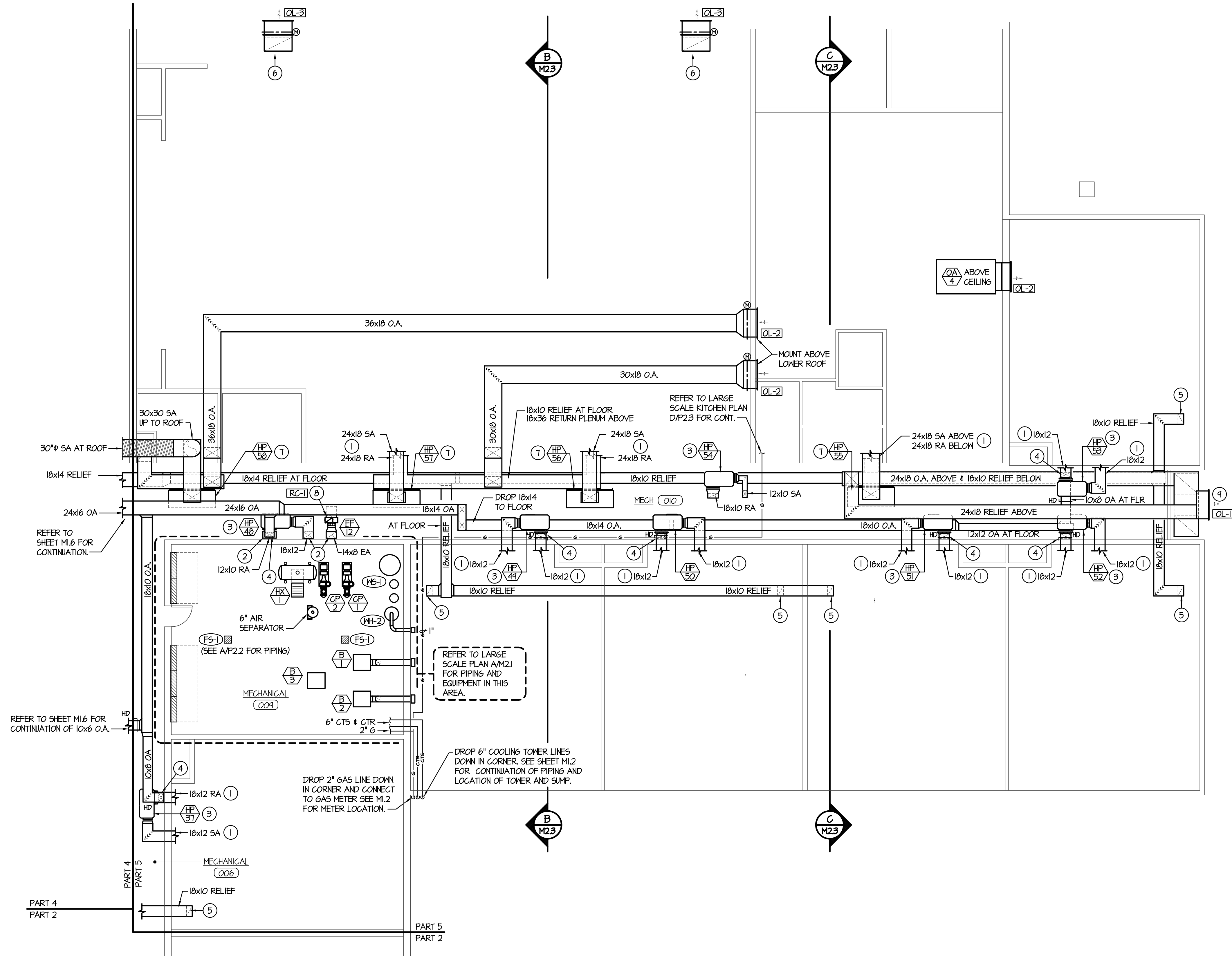
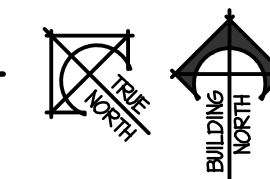


2/6/2019 9:35:00 AM F:\18\18070 Jefferson Co. Elem (Rigby)\18070-M1.7.dwg



MEZZANINE LEVEL MECHANICAL FLOOR PLAN - PART 5

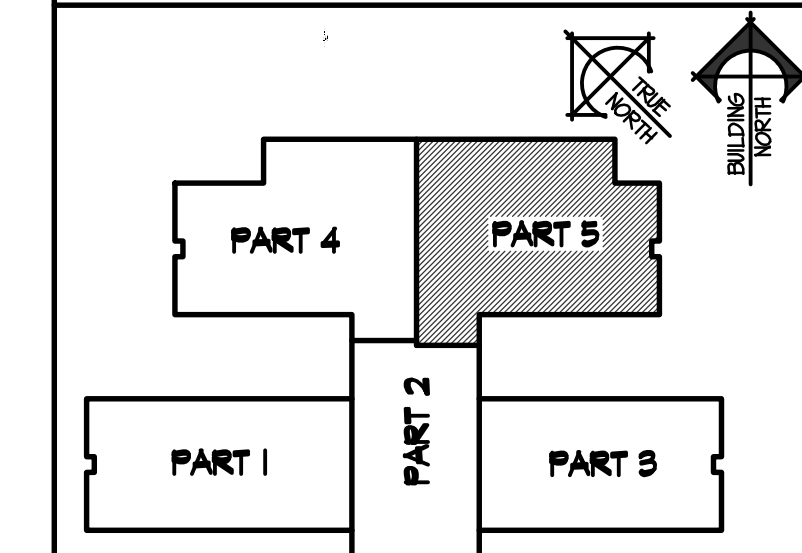
SCALE: 1/8" = 1'-0"



PLAN NOTES:

- 1 SEE MAIN LEVEL FLOOR PLAN - SHEET M1.5 FOR CONTINUATION OF DUCTWORK.
- 2 DROP DUCTWORK DOWN THRU MECH. ROOM FLOOR SEE MAIN LEVEL FLOOR PLAN - SHEET M1.5 FOR CONTINUATION.
- 3 HANG HEAT PUMPS FROM TRUSSES 36" ABOVE MECHANICAL CORRIDOR FLOOR. INSTALL DRIP PAN BELOW EACH UNIT. (TYPICAL) SEE DETAIL C/M3.2
- 4 DROP OUTSIDE AIR DUCT DOWN AND CONNECT TO RETURN AIR DUCT. PROVIDE MANUAL BALANCING DAMPER IN EACH OUTSIDE AIR DUCT CONNECTION. REFER TO OUTSIDE AIR REQUIREMENT SCHEDULE (SHEET M3.4) FOR DUCT SIZES TO INDIVIDUAL HEAT PUMPS.
- 5 CONNECT 18x10 RELIEF AIR DUCT TO GRILLE IN CEILING. RUN RELIEF DUCT THRU CEILING SPACE AS SHOWN TO CORRESPONDING HEAT RECOVERY UNIT.
- 6 RISE 36x18 RELIEF DUCTWORK UP FROM R6-6 AND CONNECT TO OUTSIDE AIR LOUVER AS SHOWN. PROVIDE MOTORIZED DAMPER AT LOUVER AND INTERLOCK WITH OPERATION OF CORRESPONDING HEAT PUMP.
- 7 MOUNT VERTICAL HEAT PUMP UNITS ON FLOOR OF MEZZANINE LEVEL WITH VIBRATION ISOLATORS. RISE SUPPLY AIR DUCT FROM TOP OF UNIT AND OUT TO ROOM AS SHOWN. PROVIDE FILTER BOX ON RETURN AIR CONNECTION. INSTALL SHEET METAL DRIP PAN BELOW UNIT.
- 8 RISE 13" EXHAUST DUCT UP TO ROOF AND CONNECT TO ROOF CAP. REFER TO DETAIL M3.2 FOR INSTALLATION OF ROOF CAP.
- 9 EXHAUST LOUVER TO BE 48x48 BASIC SIZE WITH TOP OF LOUVER SLOPED TO MATCH ROOF FITCH. (REFER TO ARCHITECTURAL ELEVATIONS.)

KEY PLAN



REVISIONS

NO.	DATE	DESCRIPTION
1	2-12-19	CONSTRUCTION SET

ORIGINAL DRAWING SIGNED BY: DWAYNE C. SUDWEEKS
 DATE ORIGINAL SIGNED: Feb 08, 2019
 ORIGINAL ON FILE AT ENGINEERED SYSTEMS ASSOCIATES
 1355 EAST CENTER, POCAATELLO, IDAHO 83201

PROJECT NO. 18012
 DATE: FEBRUARY 2019
 DRAWN BY: M JENSEN
 CHECKED BY: D SUDWEEKS
 DRAWING NO.:

Engineered Systems Associates
 1355 EAST CENTER
 POCAATELLO, IDAHO 83201
 PHONE: (208) 233-0501
 FAX: (208) 233-0529
 EMAIL: esa@engsystems.com
 ESA JOB NUMBER: 18070

NEW ELEMENTARY SCHOOL FOR
JEFFERSON COUNTY SCHOOL DISTRICT 251
 ELEMENTARY SCHOOL
 RIGBY, IDAHO

MEZZANINE LEVEL MECHANICAL FLOOR PLAN - PART 5

nbw architects p.a.
 ARCHITECTURE / PLANNING / INTERIORS

SCOTT L. NELSON, A.I.A. KEVIN R. BODILY, A.I.A. JAMES H. WYATT, A.I.A.
 990 JOHN ADAMS PARKWAY P.O. BOX 2212 - IDAHO FALLS, IDAHO 83402-2212
 (P) 208-522-8779 (F) 208-522-8785 (W) nbwarchitects.com

M1.7