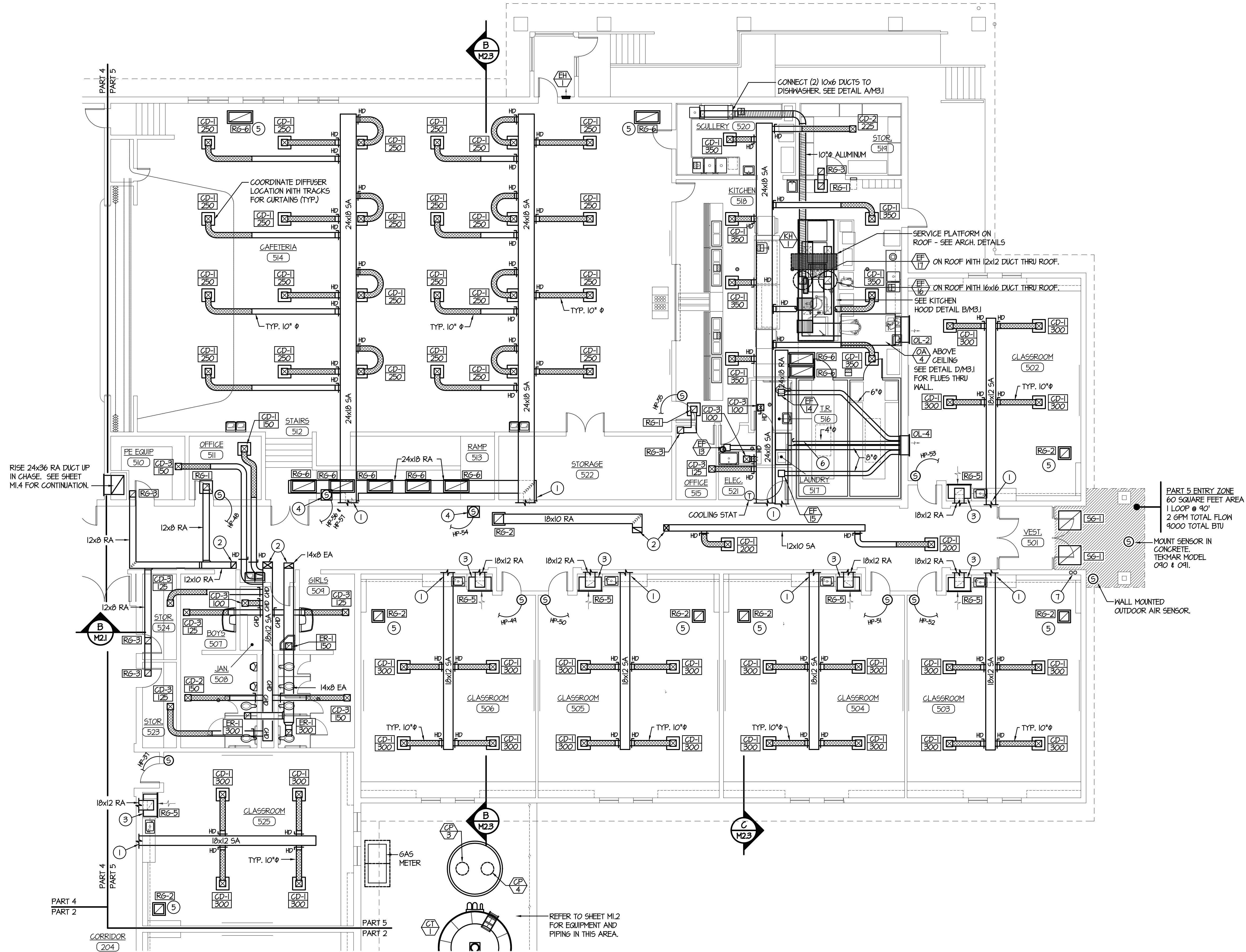


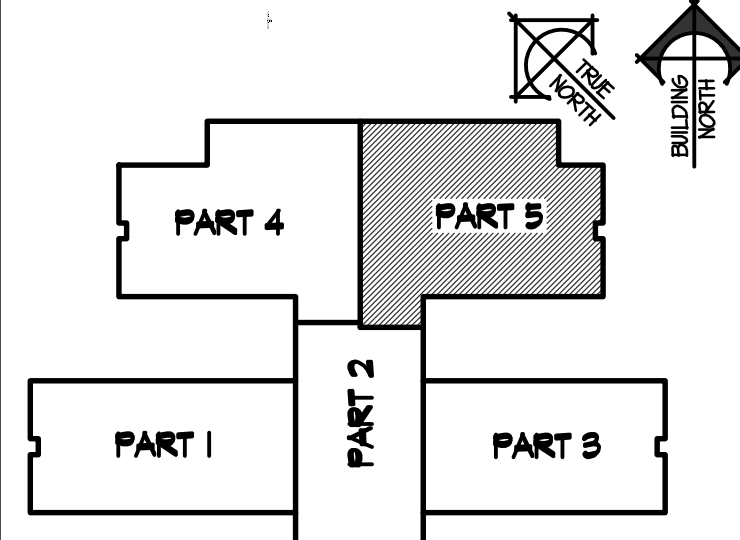
2/9/2019 9:32:15 AM F:\18\18070 Jefferson Co. Elem (rigby)\18070-M1.5.dwg



PLAN NOTES:

- 1 SEE MEZZANINE LEVEL PLAN - SHEET M1.7 FOR CONTINUATION OF DUCTWORK.
- 2 RISE DUCTWORK UP TO HEAT PUMP ABOVE. SEE MEZZANINE LEVEL PLAN - SHEET M1.7 FOR CONT.
- 3 MOUNT RETURN GRILLE OVER CABINET IN FURRED SPACE AS LOW AS POSSIBLE. INSTALL 24" DEEP PLENUM BEHIND RETURN AIR GRILLE. RISE RETURN AIR DUCT OFF THE TOP OF PLENUM AND RUN TO HEAT PUMP ON MEZZANINE MECHANICAL WALKWAY.
- 4 PROVIDE LOCKING METAL COVER OVER SENSORS IN PUBLIC AREAS. COORDINATE LOCATION OF SENSORS IN CORRIDORS WITH COAT RACKS, BULLETIN BOARDS AND OTHER ITEMS BEING INSTALLED. FIELD VERIFY EXISTING CONDITIONS.
- 5 RELIEF AIR GRILLE FOR CLASSROOM. COORDINATE LOCATION WITH CEILING GRID AND LIGHT FIXTURES. REFER TO UPPER LEVEL FLOOR PLAN (SHEET M1.7) FOR DUCTWORK CONNECTIONS.
- 6 RISE 4" DRYER EXHAUST DUCT UP IN WALL TO ABOVE CEILING. EXTEND ABOVE CEILING TO LOUVER AS SHOWN. REFER TO DETAIL D/M21 FOR TYPICAL DRYER VENT INSTALLATION.
- 7 DROP 3/4" SNOW MELT SUPPLY AND RETURN LINES DOWN IN WALL TO SNOW MELT LOOP IN ENTRY WAY. REFER TO SHEET M1.6 FOR CONTINUATION OF SNOW MELT PIPING AND ZONE VALVE ON MEZZANINE LEVEL. REFER TO DETAIL C/M22 FOR TYPICAL LOOP LAYOUT AND INSTALLATION IN CONCRETE WALKS. (NO MANIFOLD IS REQUIRED FOR THIS ZONE.)

KEY PLAN



ORIGINAL DRAWING SIGNED BY: DWAYNE C. SUDWEEKS
 DATE ORIGINAL SIGNED: Feb 08, 2019
 ORIGINAL ON FILE AT ENGINEERED SYSTEMS ASSOCIATES
 1355 EAST CENTER, POCATELLO, IDAHO 83201

PROFESSIONAL ENGINEER
 REGISTERED
5762
 STATE OF IDAHO
 DWAYNE C. SUDWEEKS

Engineered Systems Associates
 1355 EAST CENTER
 POCATELLO, IDAHO 83201
 PHONE: (208) 233-0501
 FAX: (208) 233-0529
 EMAIL: esa@engsystems.com
 ESA JOB NUMBER: 18070

MAIN LEVEL MECHANICAL FLOOR PLAN - PART 5
 SCALE: 1/8" = 1'-0"

nbw architects p.a.
 ARCHITECTURE / PLANNING / INTERIORS
 SCOTT L. NELSON, A.I.A. KEVIN R. BODILY, A.I.A. JAMES H. WYATT, A.I.A.
 990 JOHN ADAMS PARKWAY P.O. BOX 2212 - IDAHO FALLS, IDAHO 83402-2212
 (P) 208-522-8779 (F) 208-522-8785 (W) nbwarchitects.com

NEW ELEMENTARY SCHOOL FOR
JEFFERSON COUNTY SCHOOL DISTRICT 251
 ELEMENTARY SCHOOL
 RIGBY, IDAHO
 MAIN LEVEL MECHANICAL FLOOR PLAN - PART 5

PROJECT NO. 18012
 DATE: FEBRUARY 2019
 DRAWN BY: M JENSEN
 CHECKED BY: D SUDWEEKS
 DRAWING NO.: **M1.5**