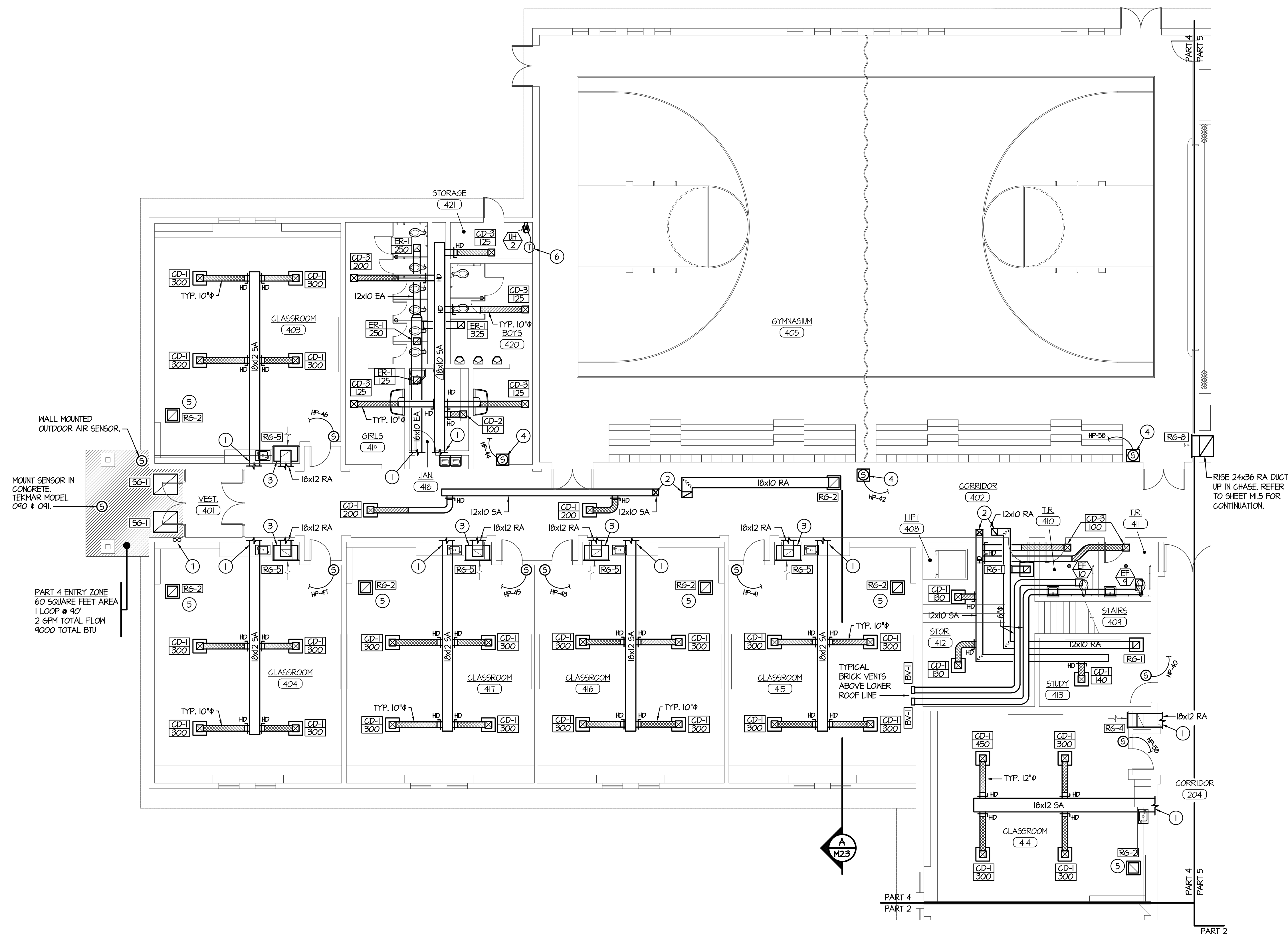
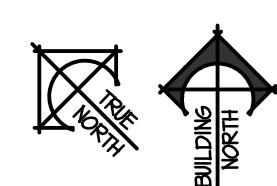


2/9/2019 9:31:56 AM F:\18\18070 Jefferson Co. Elem (Rigby)\18070-M1.4.dwg



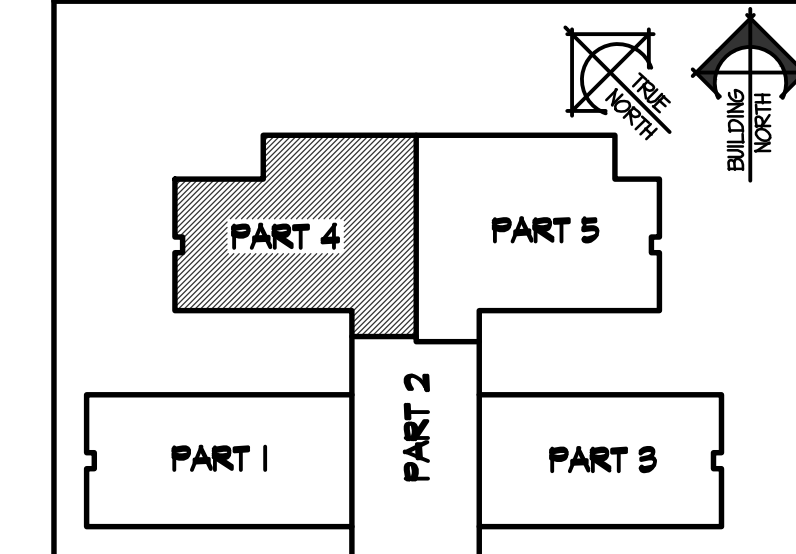
MAIN LEVEL MECHANICAL FLOOR PLAN - PART 4
SCALE: 1/8" = 1'-0"



PLAN NOTES:

- 1 SEE MEZZANINE LEVEL PLAN - SHEET M1.6 FOR CONTINUATION OF DUCTWORK.
- 2 RISE DUCTWORK UP TO HEAT PUMP ABOVE. SEE MEZZANINE LEVEL PLAN - SHEET M1.6 FOR CONT.
- 3 MOUNT RETURN GRILLE OVER CABINET IN FURRED SPACE AS LOW AS POSSIBLE. INSTALL 24" DEEP PLENUM BEHIND RETURN AIR GRILLE. RISE RETURN AIR DUCT OFF THE TOP OF PLENUM AND RUN TO HEAT PUMP ON MEZZANINE MECHANICAL WALKWAY.
- 4 PROVIDE LOCKING METAL COVER OVER SENSORS IN PUBLIC AREAS. COORDINATE LOCATION OF SENSORS IN CORRIDORS WITH COAT RACKS, BULLETIN BOARDS AND OTHER ITEMS BEING INSTALLED. FIELD VERIFY EXISTING CONDITIONS.
- 5 RELIEF AIR GRILLE FOR CLASSROOM. COORDINATE LOCATION WITH CEILING GRID AND LIGHT FIXTURES. REFER TO UPPER LEVEL FLOOR PLAN (SHEET M1.6) FOR DUCTWORK CONNECTIONS.
- 6 PROVIDE AND INSTALL UNIT HEATER AS SPECIFIED COMPLETE WITH WALL MOUNTING BRACKET. MOUNT AS HIGH AS POSSIBLE. REFER TO DETAIL LMB.2.
- 7 DROP 3/4" SNOW MELT SUPPLY AND RETURN LINES DOWN IN WALL TO SNOW MELT LOOP IN ENTRY WAY. REFER TO SHEET M1.6 FOR CONTINUATION OF SNOW MELT PIPING AND ZONE VALVE ON MEZZANINE LEVEL. REFER TO DETAIL CM2.2 FOR TYPICAL LOOP LAYOUT AND INSTALLATION IN CONCRETE WALKS. (NO MANIFOLD IS REQUIRED FOR THIS ZONE.)

KEY PLAN



ORIGINAL DRAWING SIGNED BY: DWAYNE C. SUDWEEKS
DATE ORIGINAL SIGNED: Feb 08, 2019
ORIGINAL ON FILE AT ENGINEERED SYSTEMS ASSOCIATES
1355 EAST CENTER, POCAATELLO, IDAHO 83201

PROFESSIONAL ENGINEER
REGISTERED
STATE OF IDAHO
DWAYNE C. SUDWEEKS
5762

Engineered Systems Associates
1355 EAST CENTER
POCAATELLO, IDAHO 83201
PHONE: (208) 233-0501
FAX: (208) 233-0529
EMAIL: esa@engsystems.com
ESA JOB NUMBER: 18070

nbw architects p.a.
ARCHITECTURE / PLANNING / INTERIORS
SCOTT L. NELSON, A.I.A. KEVIN R. BODILY, A.I.A. JAMES H. WYATT, A.I.A.
990 JOHN ADAMS PARKWAY P.O. BOX 2212 - IDAHO FALLS, IDAHO 83402-2212
(208) 208-522-8779 (F) 208-522-8785 (O) nbwarchitects.com

NEW ELEMENTARY SCHOOL FOR
JEFFERSON COUNTY SCHOOL DISTRICT 251
ELEMENTARY SCHOOL
RIGBY, IDAHO
PROJECT NO. 18012
DATE: FEBRUARY 2019
DRAWN BY: M JENSEN
CHECKED BY: D SUDWEEKS
DRAWING NO.:
SHEET TITLE: MAIN LEVEL MECHANICAL FLOOR PLAN - PART 4

M1.4